



## Community Services and Mental Health

A day spent working in community services means supporting people to make positive changes in their lives. If you are driven to help others, while also being passionate about your own career progression and future job prospects, TAFE NSW has a range of courses that can help you to achieve your goals.



### Job opportunities<sup>^</sup>

The need for professional support services in metropolitan and rural areas has created a surge in demand for qualified community service professionals, with employment projected to grow by 19,100 jobs (or 25.2%) by 2025.

A relatively large proportion (44%) of Community and Personal Service Worker occupations are projected to have strong future demand, compared with 33% of all occupations.



### Annual growth +14.2%<sup>^</sup>

The Community Services and Health Industries are the largest and fastest growing in Australia, with community workers in high demand in both urban centres and rural communities across the state.



### Earning Potential<sup>1</sup>

The median weekly salary for a community worker is \$1,492.



### Industry partnerships

Grow your industry skills through work experience opportunities with leading community services providers.

## Qualifications you can earn at TAFE NSW

A fulfilling and rewarding career in Community Services and Mental Health awaits. Gain professional skills and knowledge in a course designed and delivered by industry experts when you study at TAFE NSW. Not only can you earn an industry-recognised qualification, but you'll build the hands-on skills and professional connections needed to ensure your career gets off to the best start.

Course	Code
Certificate II in Community Services	CHC22015
Certificate III in Community Services	CHC32015
Certificate III in Mentoring Aboriginal and/or Torres Strait Islander People	10650NAT
Certificate IV in Alcohol and Other Drugs	CHC43215
Certificate IV in Community Services	CHC42015
Certificate IV in Mental Health	CHC43315
Certificate IV in Mental Health Peer Work	CHC43515
Certificate IV in Mental Health Peer Work (Consumer Peer Work)	CHC43515
Certificate IV in Housing	CHC42221

Course	Code
Certificate IV in Youth Justice	CHC40513
Certificate IV in Youth Work	CHC40413
Diploma of Alcohol and Other Drugs	CHC53215
Diploma of Community Services	CHC52015
Diploma of Community Services (Case Management)	CHC52015
Diploma of Counselling	CHC51015
Diploma of Financial Counselling	CHC51115
Diploma of Mental Health	CHC53315
Diploma of Youth Work	CHC50413
Bachelor of Community Services	HE20528

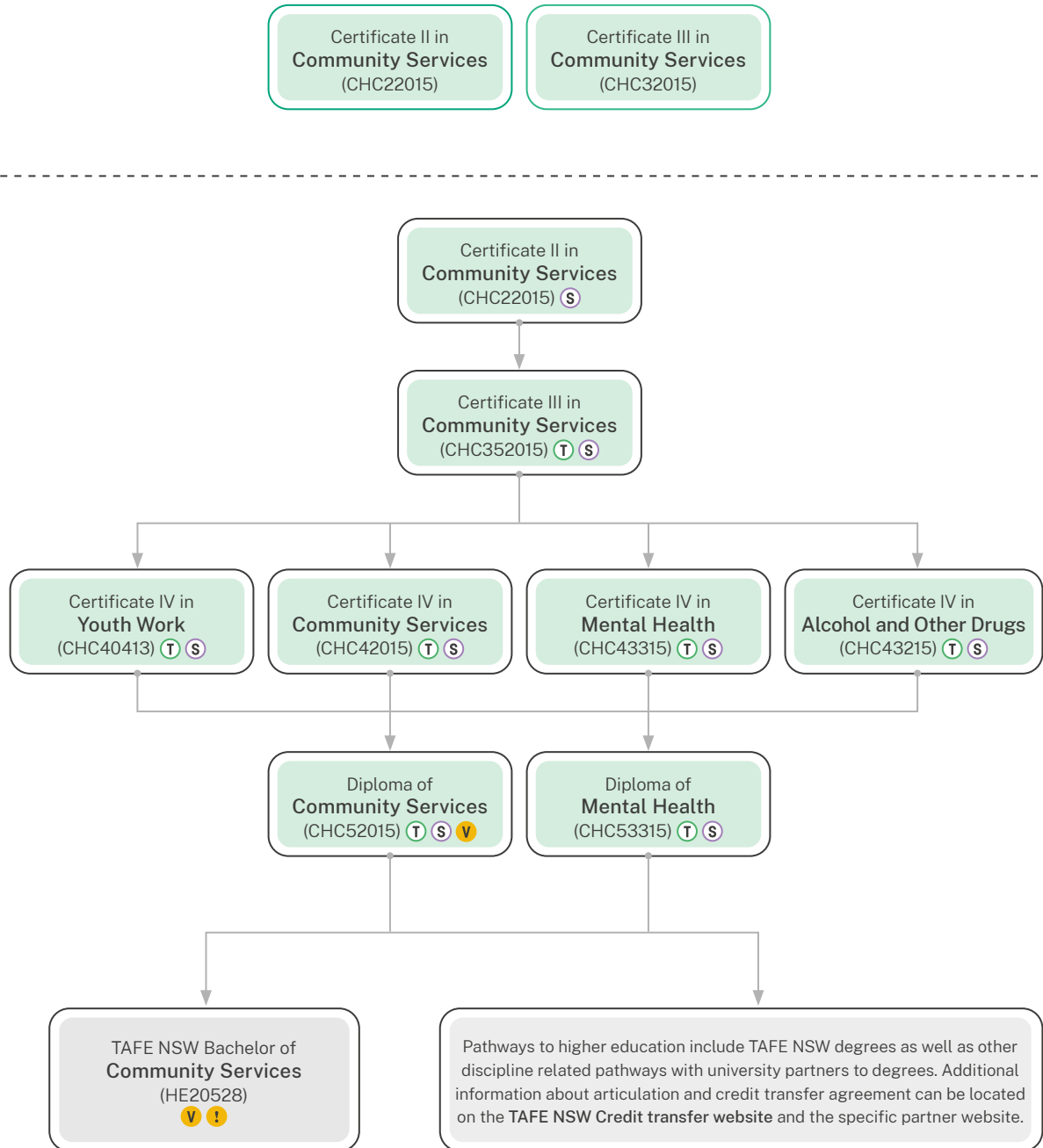
### Fees for your course

A range of criteria apply for course fees, access to government subsidised training, student loans, payment by instalment, fee concessions, and fee exemptions that are available to eligible students. The training for all or some of the courses listed is subsidised by the NSW Government under Smart and Skilled funding. Visit [tafensw.edu.au/enrol/fees](https://tafensw.edu.au/enrol/fees).

<sup>1</sup> Source: LMI 2022 [<https://labourmarketinsights.gov.au/occupation-profile/welfare-support-workers?occupationCode=4117>], [<https://www.nationalskillscommission.gov.au/publications/skills-priority-list-occupations/anzsco-major/community-and-personal-service-workers>]  
<sup>^</sup> Source: LMI 2022 [<https://labourmarketinsights.gov.au/our-research/employment-projections/>]

### How you can grow your career

When you study with TAFE NSW, there are any number of courses that lead to an even greater number of career opportunities. However, before you can earn certain qualifications, you may have to complete some pre-requisite courses. Below are some examples of career progression pathways you could follow.



- T Traineeship and School Based Traineeship
- S Smart and Skilled
- V VET Student Loan Approved
- ! Entry Requirement

**For more information contact 131 601**