



Natural Resources

If you're passionate about the environment and sustainable agricultural practices, a varied and exciting career in the natural resource management industry could be perfect for you. With career opportunities in forestry, natural area restoration, and conservation work with public and private land owners, TAFE NSW offers qualifications and short courses to suit anyone interested in the management of natural resources. If you want to work to ensure Australia's sustainability, TAFE NSW can help you to build rewarding, hands-on resource management skills.



Job opportunities

Opportunities exist in ecosystem restoration, sustainable forestry, and public land management.



Industry partnerships

Aust Assoc of Bush Regenerators, Forest Industry Council, Society for Ecological Restoration.



Annual growth[^]

Employment in Forestry and Logging in Australia is projected to rise by 2.9%[^] annually to 2027.



Annual revenue growth[^]

Annual revenue growth in Forestry and Logging is around 2.2%[^] according to industry forecast to 2027.

Qualifications you can earn at TAFE NSW

When you're looking to pursue a career in forestry and natural resources, you'll need to make sure you have the expert skills, the professional knowledge, and the recognised qualification that gives you the employment edge. Studying a TAFE NSW qualification can ensure that you will build the necessary industry skills and make the necessary industry connections you need, to help you kickstart your career.

| Course | Code | Duration |
|--|-----------|----------|
| Certificate II in Sawmilling and Processing | FWP20316 | 2 Years |
| Certificate II in Conservation and Ecosystem Management | AHC21020 | 1 Year |
| Certificate III in Conservation and Ecosystem Management | AHC31421 | Variable |
| Certificate III in Harvesting and Haulage | FWP30216* | 2 Years |

| Course | Code | Duration |
|--|-----------|-------------|
| Certificate III in Saw Technology | FWP31019* | 3 Years |
| Certificate IV in Forest Operations | FWP40116* | 2 Years |
| Diploma of Conservation and Ecosystem Management | AHC51120 | 1.5-2 Years |

Fees for your course

A range of criteria apply for course fees, access to government subsidised training, student loans, payment by instalment, fee concessions, and fee exemptions that are available to eligible students. The training for all/some of the courses listed is subsidised by the NSW Government under Smart and Skilled funding. Visit tafensw.edu.au/enrol/fees.

[^] Source: my.ibisworld.com.au Report A0300 1/03/2022.

* This course is superseded. You can still enrol in this course, and you will be contacted if you need to transition into the next version when it is available.

Natural Resources

Short courses you can study at TAFE NSW

TAFE NSW has a selection of short courses available to study, that can help you build the essential forestry and natural resources skills needed to kickstart your career, or to help you round out your résumé.

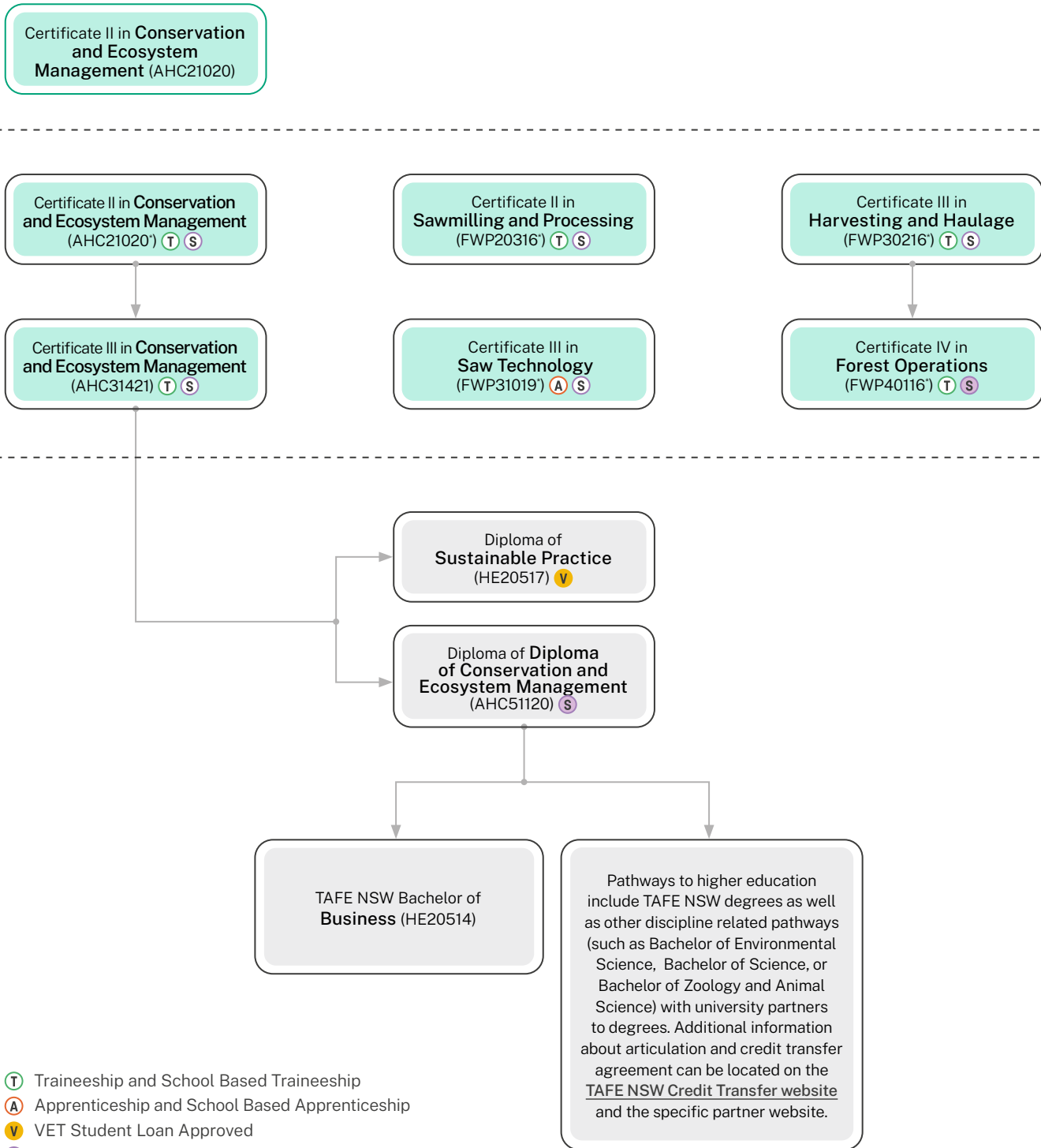
| Short Course | Code | Duration | Included Units of Study |
|---|------------|----------|---|
| Skill Set for Plantation Forest Operator | FWPSS00018 | 0.5 Year | FWPCOT3257 Follow cultural heritage requirements FWPCOR2205 Follow WHS policies and procedures FWPCOT3258 Comply with soil and water protection FWPCOR2203 Follow environmental care procedures |
| Statement of Attainment in Bush Regeneration | 900-81400 | 0.5 Year | AHCNAR201* Carry out natural area restoration works AHCPM201* Recognise plants AHCPMG301 Control weeds |
| Statement of attainment in Chainsaw Operations – Trim and Cut | 900-5291 | 2 Days | FWPCOR2205 Follow WHS policies and procedures FWPCOT2237* Maintain chainsaws FWPCOT2238 Cut materials with a hand-held chainsaw FWPCOT2239* Trim and cut felled trees |
| Statement of attainment in Chainsaw Operations – Basic Tree Felling | 900-5292 | 3 Days | FWPCOR2205 Follow WHS policies and procedures FWPCOT2236* Fall trees manually (Basic) FWPCOT2237* Maintain chainsaws FWPCOT2238 Cut materials with a hand-held chainsaw FWPCOT2239* Trim and cut felled trees |
| Skill Set for Agricultural Chemical | AHCSS00074 | 2 Days | AHCCHM307 Prepare and apply chemicals to control pest, weeds and diseases AHCCHM304 Transport and store chemicals |

[Visit our website for more short courses.](#)

* This unit is superseded.

How you can grow your career

When you study with TAFE NSW, there are any number of courses that lead to an even greater number of career opportunities. However, before you can earn certain qualifications, you may have to complete some pre-requisite courses. Below are some examples of career progression pathways you could follow.



- T** Traineeship and School Based Traineeship
- A** Apprenticeship and School Based Apprenticeship
- V** VET Student Loan Approved
- S** Smart and Skilled
- S** Smart and Skilled Targeted Priority

For more information contact 131 601

TVET (SCHOOL)

ENTER DIRECTLY AT ANY POINT

CONDITIONAL ENTRY