



Aged Care

Australia has an ageing population, which is increasing demand for aged care and related services. Working with older people can be a rewarding, meaningful, and important career, as you can be instrumental in improving quality of life. There are many career options and openings available in the aged care sector, and it may be a perfect career choice for you and your first steps could be with TAFE NSW.



Job opportunities

Healthcare and social assistance is Australia's largest employment industry, with nearly 267,000 people currently employed in direct care roles in Australia's aged and disability care areas.



Future opportunities

There is very strong growth projected in the aged care sector driven by increasing demand from an ageing population and longer life expectancies. Jobs in this field are also less likely to be superseded by technology.



Industry growth[^] +74,900 or +28%

The workforce is expected to record the largest increase in employment between 2021 and 2026, to meet the needs of the increasing number of older Australians.

Qualifications you can earn at TAFE NSW

Ensure that your aged care career gets off to the best start possible, by enrolling in a hands-on, practical course, designed to give you the professional skills and knowledge you need. By studying an TAFE NSW course, not only can you earn an industry-recognised qualification in a range of aged care areas, but you will also ensure that you have the support you need to succeed.

Course	Code
Certificate III in Individual Support	CHC33015
Certificate III in Individual Support (Ageing)	CHC33015
Certificate III in Individual Support (Ageing, Home and Community)	CHC33015
Certificate III in Community Services	CHC32015
Certificate III in Allied Health Assistance	HLT33015
Certificate IV in Ageing Support	CHC43015
Certificate IV in Leisure and Health	CHC43415

Course	Code
Certificate IV in Allied Health Assistance	HLT43015
Diploma of Nursing	HLT54121
Diploma of Community Services	CHC52015
Diploma of Community Services (Case Management)	CHC52015
Diploma of Financial Counselling	CHC51115
Bachelor of Community Services	HE20528
Graduate Certificate in Leadership	HE20503

Fees for your course

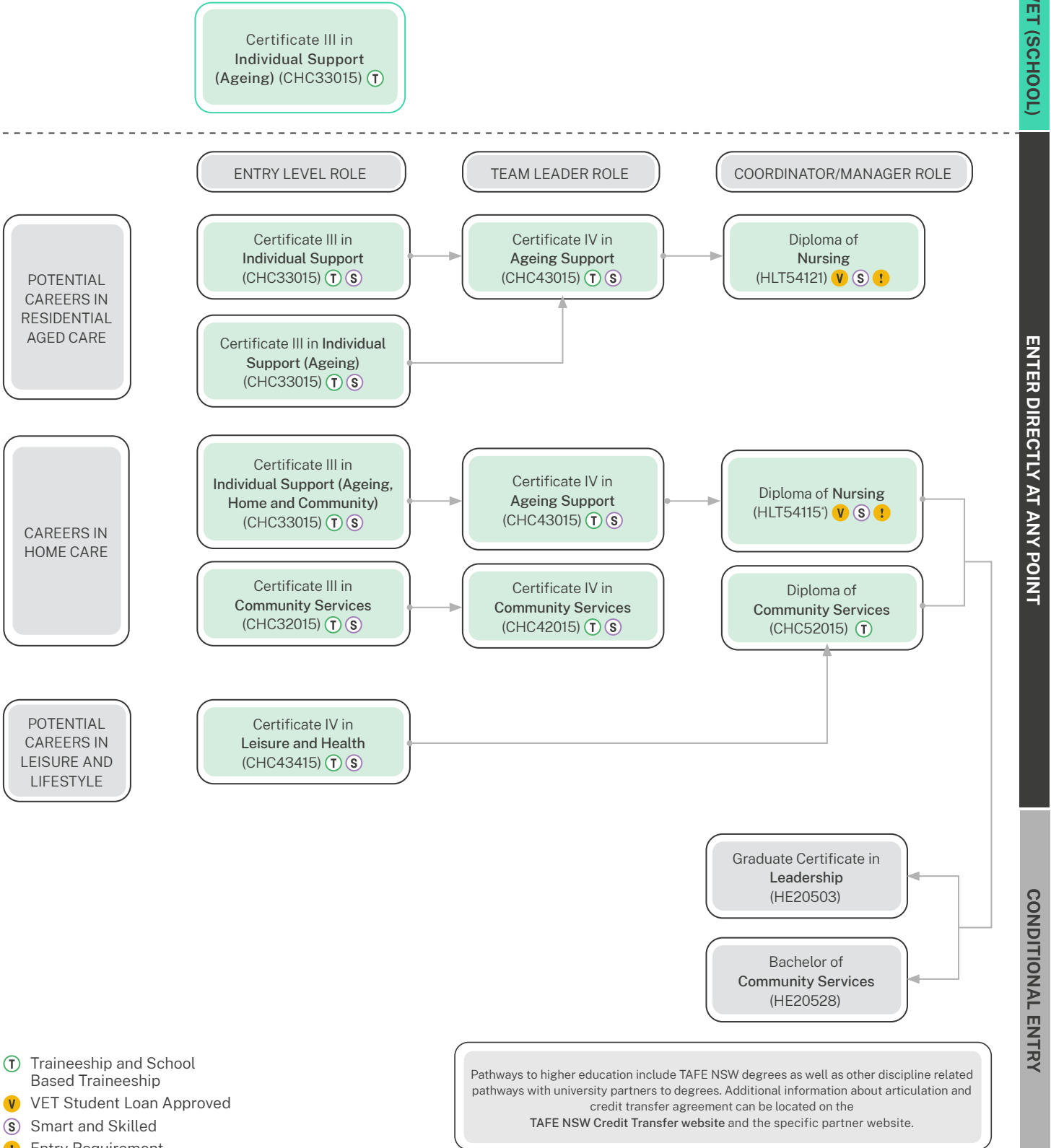
A range of criteria apply for course fees, access to government subsidised training, student loans, payment by instalment, fee concessions, and fee exemptions that are available to eligible students. The training for all or some of the courses listed is subsidised by the NSW Government under Smart and Skilled funding. Visit tafensw.edu.au/enrol/fees.

¹ Source: LMI 2022, <https://labourmarketinsights.gov.au/our-research/employment-projections/#5>.

[^] Source: LMI 2022, <https://labourmarketinsights.gov.au/media/l2ueqd0e/employment-outlook-industry-and-occupation-trends.pdf>

How you can grow your career

When you study with TAFE NSW, there are any number of courses that lead to an even greater number of career opportunities. However, before you can earn certain qualifications, you may have to complete some pre-requisite courses. Below are some examples of career progression pathways you could follow.



For more information contact 131 601