



## Horticulture and Landscaping

Horticulture is one of the fastest growing industries in Australia, playing an important role in delivering economic, social and environmental value. So if you're passionate about horticulture or landscaping, you like getting your hands dirty, have a green thumb or a love for constructed landscapes, gardens, or sports arenas, then our horticulture and landscaping courses can offer you a wide range of rural and urban opportunities.



### Job opportunities

Horticulturist, landscape construction worker, landscape designer, greenkeeper, arborist, parks and garden worker.



### Industry partnerships

Australian Institute of Horticulture, Arboriculture Australia, The Landscape Association, Australian Sports Turf Managers Association, Landscape Design Institute.



### Annual growth<sup>1</sup>

Employment in NSW for the Landscaping and Horticulture sectors is projected to rise by 2.7% and 2.0% respectively over the three years to 2025-26.

## Qualifications you can earn at TAFE NSW

When you want to kickstart a career exploring the outdoors, and putting your green thumb to work with all things nature, you'll need the professional skills and knowledge built by studying a TAFE NSW qualification. When you study at TAFE NSW, not only can you earn an industry-recognised TAFE NSW qualification in a range of horticulture, production horticulture and landscape construction course areas, but you will ensure that your career gets the best start possible.

Course	Code	Duration
Certificate II in Arboriculture	AHC20520	0.5 Year
Certificate II in Horticulture	AHC20416	0.5-3 Years
Certificate III in Arboriculture	AHC30820	1.5-2 Years
Certificate III in Horticulture	AHC30716	1-2 Years
Certificate III in Landscape Construction	AHC30921	1-3 Years
Certificate III in Production Horticulture	AHC30620	1 Year
Certificate III in Nursery Operations	AHC31120	2-3 Years

Course	Code	Duration
Certificate III in Parks and Gardens	AHC31021	1-3 Years
Certificate III in Sports Turf Management	AHC31319	2.5-3 Years
Diploma of Arboriculture	AHC50520	1.5 Years
Diploma of Sports Turf Management	AHC51019	0.5-1 Year
Diploma of Landscape Design	AHC50621	1.5-3 Years
Diploma of Horticulture	AHC50416	1-2 Years

### Fees for your course

A range of criteria apply for course fees, access to government subsidised training, student loans, payment by instalment, fee concessions, and fee exemptions that are available to eligible students. The training for all/some of the courses listed is subsidised by the NSW Government under Smart and Skilled funding. Visit [tafensw.edu.au/enrol/fees](http://tafensw.edu.au/enrol/fees).

<sup>1</sup> Source: TAFE NSW Strategy and Research based on Deloitte Access Economics forecasts (March 2022)

## Horticulture and Landscaping

### Short courses you can study at TAFE NSW

Give yourself a taste of the horticulture and landscaping industry, and expand your expertise with a TAFE NSW short course. TAFE NSW has a short course that can give you the edge when you're looking to kickstart your horticulture and landscaping career, as well as courses you can study if you're simply looking to gain a new and interesting set of skills.

Short Course	Code	Duration	Included Units of Study
Statement of Attainment in Agricultural Chemical	AHCSS00074	2 Days	AHCCHM307 Prepare and apply chemicals to control pest, weeds and diseases AHCCHM304 Transport and store chemicals
Statement of Attainment in Chainsaw Operations – Trim and cut	900-5292	2 Days	FWPCOR2205 Follow WHS Policies and Procedures FWPCOT2237 Maintain Chainsaw FWPCOT2238* Cut Material with a hand-held chainsaw FWPCOT2239* Trim and Cut felled trees
Statement of Attainment in Chainsaw Operations – Basic tree felling	900-81140	3 Days	FWPCOR2205 Follow WHS Policies and Procedures FWPCOT2237 Maintain Chainsaw, FWPCOT2238* Cut Material with a hand-held chainsaw FWPCOT2239* Trim and Cut felled trees FWPCOT2236* Fall trees manually (basic)
Statement of Attainment in Chainsaw Operations – Intermediate tree felling	900-5293	2 Days (with prerequisite)	FWPCOR2205 Follow WHS Policies and Procedures FWPCOT2237 Maintain Chainsaw FWPCOT2238* Cut Material with a hand-held chainsaw FWPCOT2239* Trim and Cut felled trees FWPCOT2236* Fall trees manually (basic) FWPFGM3212* Fall Trees manually (Intermediate)
Statement of Attainment in Chainsaw Operations – Advanced tree felling	900-81550	3 Days (with prerequisite and experience)	FWPCOR2205 Follow WHS Policies and Procedures FWPCOT2237* Maintain Chainsaw FWPCOT2238* Cut Material with a hand-held chainsaw FWPCOT2239* Trim and Cut felled trees FWPCOT2236 Fall trees manually (basic) FWPFGM3212* Fall Trees manually (Intermediate) FWPFGM3213* Fall trees manually (advanced)
Statement of Attainment towards AHC20416 Certificate II in Horticulture	717-12006	1 Year	AHCPGD201 Plant trees and shrubs AHCPGD202 Prepare and maintain plant displays AHC SOL202* Assist with soil or growing media sampling and testing AHCWHS201 Participate in work health and safety processes AHCLSC201 Assist with landscape construction work AHC MOM203 Operate basic machinery and equipment AHCNSY202* Care for nursery plants AHCWRK209 Participate in environmentally sustainable work practices AHCCHM201 Apply chemicals under supervision AHCPMG201 Treat weeds AHCPMG202 Treat plant pests, diseases and disorders AHCWRK201 Observe and report on weather AHCPGD201 Plant trees and shrubs AHCPGD202 Prepare and maintain plant displays AHC SOL202* Assist with soil or growing media sampling and testing AHCWHS201 Participate in work health and safety processes AHCLSC201 Assist with landscape construction work AHC MOM203 Operate basic machinery and equipment AHCNSY202* Care for nursery plants AHCWRK209 Participate in environmentally sustainable work practices AHCCHM201 Apply chemicals under supervision AHCPMG201 Treat weeds AHCPMG202 Treat plant pests, diseases and disorders AHCWRK201 Observe and report on weather

\* This unit is superseded.

## Horticulture and Landscaping

### Short courses you can study at TAFE NSW

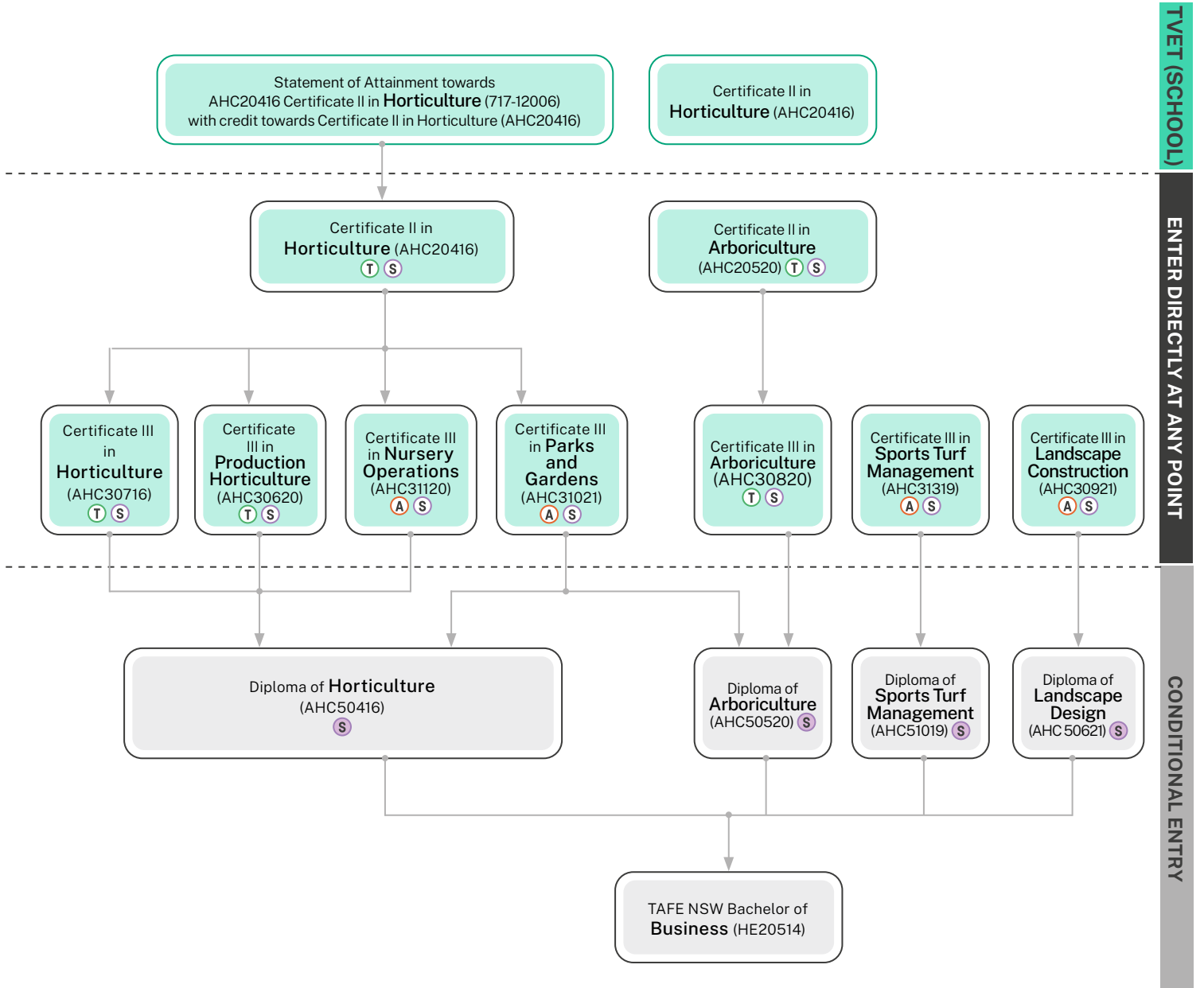
Short Course	Code	Duration	Included Units of Study
Statement of Attainment in Retail Nursery	900-80619	0.5 Year	AHCNSY201* Pot up plants AHCNSY202* Care for nursery plants AHCPCM201* Recognise plants AHCWHS201 Participate in work health and safety processes AHCNSY201* Pot up plants AHCNSY202* Care for nursery plants AHCPCM201* Recognise plants AHCWHS201 Participate in work health and safety processes

[Visit our website for more short courses.](#)

\* This unit is superseded.

### How you can grow your career

When you study with TAFE NSW, there are any number of courses that lead to an even greater number of career opportunities. However, before you can earn certain qualifications, you may have to complete some pre-requisite courses. Below are some examples of career progression pathways you could follow.



- T Traineeship and School Based Traineeship
- A Apprenticeship and School Based Apprenticeship
- S Smart and Skilled
- S Smart and Skilled Targeted Priority

**For more information contact 131 601**