



Auslan (Australian Sign Language)

Auslan (Australian Sign Language) courses, will introduce a variety of signing skills to help you communicate with the Deaf community. The skills covered in Auslan courses will allow you to communicate in Auslan ranging from familiar and routine matters through to complex and spontaneous conversations. You will also learn about the Deaf Community, Deaf Culture and History as well as the linguistics of Auslan.



Growing Industry

The education, disability and aged care sectors are among the largest industries in Australia. These industries are consistently seeking ways to ensure all services are available to the deaf community.



Learn in real world situations

Our teachers are actively part of the deaf community and are passionate about sharing their knowledge and skills, giving you the opportunity to learn in real-world situations using Auslan to communicate.

Qualifications you can earn at TAFE NSW

The right skills, knowledge and experience makes all the difference when you're launching a career –and that's exactly what a TAFE NSW qualification gives you. Our courses are taught by expert teachers, meaning you'll leave with the skills that employers are looking for –giving you an employment edge.

Course	Code	Duration
TAFE Statement in Auslan Fundamentals (NNR)	800-000951	4 weeks PT
Statement of Attainment in Conversing in Auslan at a Basic user Level	900-82722	18 weeks PT
Certificate II in Auslan	PSP20218	18-36 weeks PT

Course	Code	Duration
Certificate III in Auslan	PSP30218	20-36 weeks PT
Certificate IV in Auslan	PSP40818	36 weeks
Diploma of Auslan	PSP51018	18 months PT

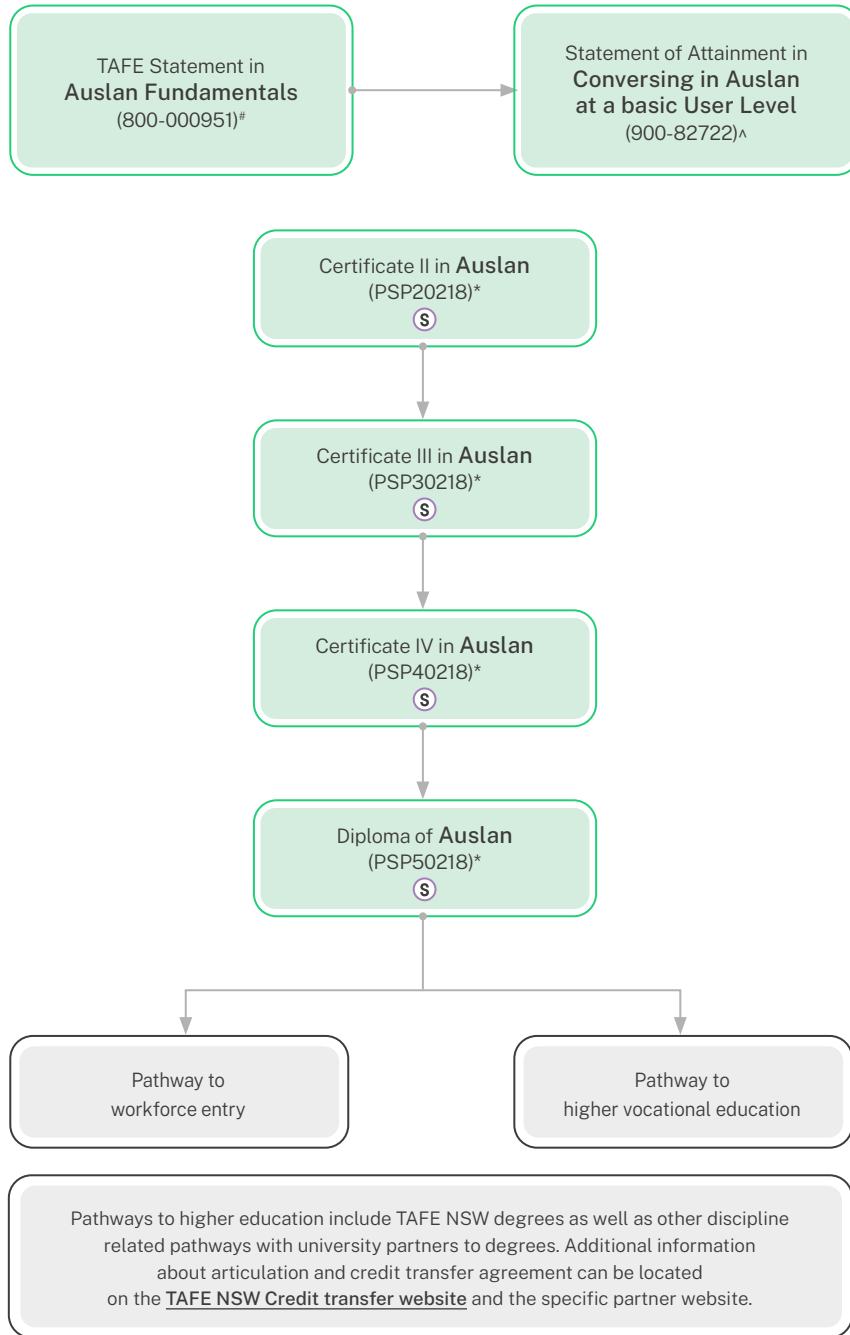
PT = part time

Fees for your course

A range of criteria apply for course fees, access to government subsidised training, student loans, payment by instalment, fee concessions and fee exemptions that are available to eligible students. The training for all or some of the courses listed is subsidised by the NSW Government under Smart and Skilled funding. Visit: [tafensw.edu.au/enrol/fees](https://www.tafensw.edu.au/enrol/fees).

How you can grow your career

When you study with TAFE NSW, there are any number of courses that lead to an even greater number of career opportunities. However, before you can earn certain qualifications, you may have to complete some pre-requisite courses. Below are some examples of career progression pathways you could follow.



ENTER DIRECTLY AT ANY POINT
CONDITIONAL ENTRY

S Smart and Skilled

For more information contact 131 601

* Eligible for fee concession and exemptions
 ^ Fully funded
 # Non-accredited, Non assessable, No fee exemptions