



## Hospitality

This fast-paced and vibrant industry where the goal is to provide superior customer service and experiences is one of the largest and most diverse industries across the globe. Whether you would like to be a barista, bartender or hotel manager, TAFE NSW offers a range of courses to help you launch your career.



### Annual growth <sup>^</sup>

Employing more than 901,400 staff and making up 6.7% of Australia's workforce, the hospitality industry is expected to increase significantly over the next five years. The strongest growth will be in accommodation services, with 30% more workers needed, and 15% more café workers.

Projections for the accommodation sector indicate a growth in employments levels to 101,000 by 2025. Employment in the food and beverage services sector is projected to increase to 846,400 by 2025.



### Industry demand <sup>1</sup>

This is a growth industry, requiring another 112,400 workers to fill roles over the next five years. Cafes, restaurants and take away food services are the largest employing sectors in the industry.

## Qualifications you can earn at TAFE NSW

Hospitality courses offer students a chance to further your passion for food, drink or accommodation services and learn how to apply this expertise in a professional setting. Courses in this sector are formulated to equip you with the practical skills and background knowledge you need to accomplish customer service and communication skills like problem solving, negotiation and managing organisational tasks within any organisation.

Course	Code	Duration
Certificate I in Hospitality	SIT10222	Up to 18 weeks PT
Certificate II in Hospitality	SIT20322	9 weeks FT Up to 36 weeks PT
Certificate III in Hospitality	SIT30622	18 weeks FT Up to 36 weeks PT

PT = part time FT = full time

Course	Code	Duration
Certificate IV in Hospitality	SIT40422	18 weeks FT Up to 54 weeks PT
Diploma of Hospitality Management	SIT50422	32 weeks FT Up to 72 weeks PT
Advanced Diploma of Hospitality Management	SIT60322	54 weeks FT up to 90 weeks PT

### Fees for your course

A range of criteria apply for course fees, access to government subsidised training, student loans, payment by instalment, fee concessions, and fee exemptions that are available to eligible students. The training for all or some of the courses listed is subsidised by the NSW Government under Smart and Skilled funding. Visit [tafensw.edu.au/enrol/fees](http://tafensw.edu.au/enrol/fees).

<sup>^</sup> Source: [LMI 2022](#), [AISC, Hospitality](#). <sup>1</sup> Source: <https://www.myskills.gov.au/industries/tourism-hospitality>, [LMI 2022](#)

TAFE NSW is approved by Liquor, Gaming and Racing NSW FY 2022/2023 to deliver RSA, RCG, Licensee/Advanced Licensee courses.

# Hospitality

## Short courses you can study at TAFE NSW

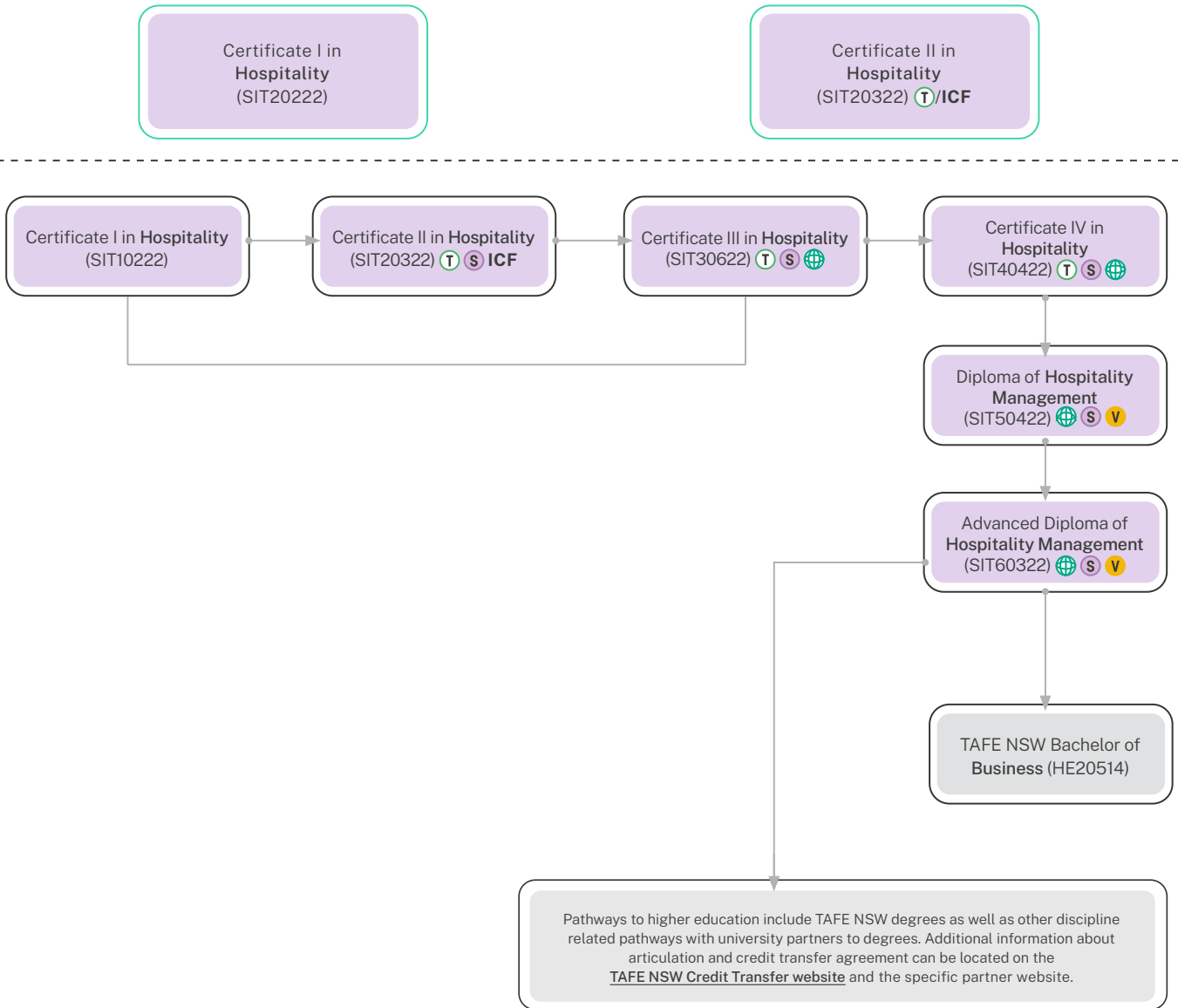
With so many career opportunities to choose from, a short course at TAFE NSW will allow you to quickly gain the skills you need to get started in the industry. Choose from licensed courses that are required if you will be working with bar and gaming venues, or try a course in barista, cocktails, wines, housekeeping and hotel management. We will provide training to give you skills to be job ready in a variety of hospitality settings.

Short Course	Code	Duration	Included Units of Study
Statement of Attainment in Responsible Service of Alcohol	SITSS00071	6 hours	SITHFAB021 -Provide responsible service of alcohol
Statement of Attainment in Food Safety Supervisor	SITSS00069	7 hours	SITXFSA005 -Use hygienic practices for food safety SITXFSA006 -Participate in safe food handling practices. In this food safety course you will gain the skills and knowledge in hygienic practices and handling food safely during the storage, preparation, display, service, and disposal of food.  Additional study outside class is required and the graduate will be eligible for Food Safety Supervisor certificate from Food Authority NSW
Statement of Attainment in Food Handling	SITSS00068	6 hours	SITXFSA005 -Use hygienic practices for food safety. In this course you will gain skills to use for working in food handling to ensure food safety.

[Visit our website for more short courses.](#)

### How you can grow your career




When you study with TAFE NSW, there are any number of courses that lead to an even greater number of career opportunities. However, before you can earn certain qualifications, you may have to complete some pre-requisite courses. Below are some examples of career progression pathways you could follow.



T/ICF (SCHOOL)

ENTER DIRECTLY AT ANY POINT

CONDITIONAL ENTRY

-  International
-  Traineeship and School Based Traineeship
-  VET Student Loan Approved
-  Smart and Skilled Targeted Priority
- ICF** Industry Curriculum Frameworks

### For more information contact 131 601

TAFE NSW is approved by Liquor, Gaming and Racing NSW FY 2022/2023 to deliver RSA, RCG, Licensee/Advanced Licensee courses.

Disclaimer: Please check to ensure that courses are currently being offered at your preferred TAFE NSW location. Course delivery and duration may also vary between TAFE NSW locations, so please confirm before enrolling. Fee free eligibility may apply.

RTO 90003 | CRICOS 00591E | HEP PRV12049  
Correct at time of publication (October 2022)