



Allied Health

Nurture your desire to help others and make a positive impact every day, in the rapidly evolving world of healthcare. TAFE NSW can provide you with a wide range of clinical, technical, and administrative healthcare skills for a career in this diverse and growing sector.



Job opportunities¹

Jobs in allied health are projected to increase across health, disability and aged care.



Annual growth² +29,000 / +6.6% in NSW

Allied Health is part of the Health Care and Social Services sector and is expected to grow by 6.6% through to 2025-26 in NSW.



Industry partnerships

TAFE NSW engages with key industry bodies and employers to ensure job ready graduates.



Future opportunities³

Continued investment in public health care and infrastructure to meet the needs of an ageing population will drive growth and innovation in the allied health sector.

Qualifications you can earn at TAFE NSW

TAFE NSW has a range of certificates, diplomas and advanced diplomas to give you the skills you need for a rewarding career in Allied Health. Whether you want to assist in a dental practice, audiometry or leisure and health, we have a course that's perfect for you.

Course	Code
Certificate III in Allied Health Assistance	HLT33015
Certificate IV in Allied Health Assistance	HLT43015
Certificate III in Dental Assisting	HLT35021
Certificate IV in Dental Assisting	HLT45021
Diploma of Dental Technology	HLT55118

Course	Code
Advanced Diploma of Dental Prosthetics	HLT65015
Certificate IV in Audiometry	HLT47415
Diploma of Audiometry	HLT57415
Certificate IV in Optical Dispensing	HLT47815
Certificate IV in Leisure and Health	CHC43415

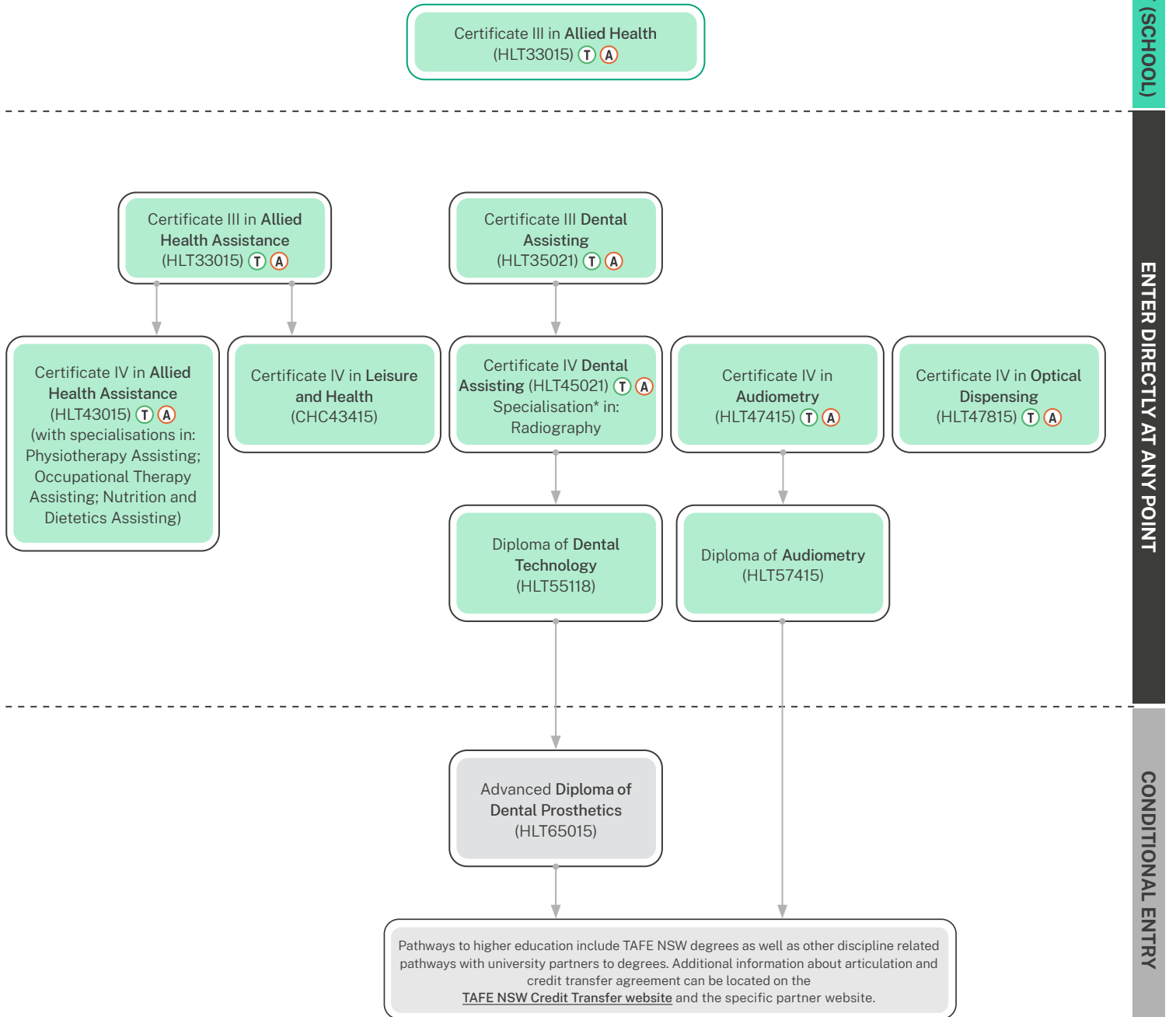
Fees for your course

A range of criteria apply for course fees, access to government subsidised training, student loans, payment by instalment, fee concessions, and fee exemptions that are available to eligible students. The training for all or some of the courses listed is subsidised by the NSW Government under Smart and Skilled funding. Visit tafensw.edu.au/enrol/fees.

1 Source: TAFE NSW Strategy and Research based on Deloitte Access Economics forecasts (March 2022) | 2 Source: TAFE NSW Strategy and Research based on Deloitte Access Economics forecasts (March 2022) | 3 Source: <https://labourmarketinsights.gov.au/media/l2ueqd0e/employment-outlook-industry-and-occupation-trends.pdf>

How you can grow your career

When you study with TAFE NSW, there are any number of courses that lead to an even greater number of career opportunities. However, before you can earn certain qualifications, you may have to complete some pre-requisite courses. Below are some examples of career progression pathways you could follow.



- T Traineeship and School Based Traineeship
- A Apprenticeship and School Based Apprenticeship

For more information contact 131 601