



## Building, Construction and Plumbing

With the current shortage of qualified tradespeople throughout Australia, there has never been a better time to get yourself a trade. A qualification in building will help you develop the skills and knowledge to manage building projects, including selecting contractors, contract management, and overseeing work quality and liaising with clients. Learning a trade and earning your trade contractor's licence can give you the freedom to set up your own business or lead to a career in project management.



### Job opportunities and forecast growth<sup>1</sup>

Construction trade occupations are forecast to grow by 6.1% over the four years to November 2026, with the extensive investment in general construction and infrastructure projects expected to create many job opportunities.



### Industry growth<sup>2</sup>

The construction sector is forecast to grow by 5.8% and create 66,400 additional job opportunities over the five years to November 2026 through investment in construction of community projects and infrastructure.



### Strong Industry connections

TAFE NSW maintains partnerships with major projects such as Western Sydney Airport Skills Exchange, as well as peak industry bodies including the Master Builders Association and Housing Industry Association.

TAFE NSW is developing the NSW Institute of Applied Technology for Construction in Western Sydney, a signature construction training hub.



### Industry Demand<sup>3</sup>

The Commonwealth Government has a \$110 billion 10-year rolling pipeline for infrastructure projects.

## Qualifications you can earn at TAFE NSW

With infrastructure and construction leading the economic recovery of NSW, there's never been a better time to be involved in the building, construction and plumbing. TAFE NSW has a range of courses available to teach you the skills you need to lay the solid foundations you need for a successful career in this sector.

Course	Code
Certificate I in Construction	CPC10120
Certificate II in Construction	CPC20120
Certificate II in Construction Pathways	CPC20220
Certificate III in Carpentry	CPC30220

Course	Code
Certificate III in Plumbing	CPC32420
Certificate IV in Plumbing and Services (Operations)	CPC40920
Certificate III in Roof Plumbing	CPC32620

<sup>1</sup> Source: LMI 2022. <sup>2</sup> Source: LMI 2022. <sup>3</sup> Source: DAE, The future of infrastructure

\* This course is superseded. You can still enrol in this course, and you will be contacted if you need to transition into the next version when it is available.

## Building, Construction and Plumbing

Course	Code	Course	Code
Certificate III in Roof Tiling	CPC30820	Certificate III in Construction Waterproofing	CPC31420
Certificate III in Gas Fitting	CPC32720	Certificate III in Shopfitting	CPC30120
Certificate III in Bricklaying & Blocklaying	CPC33020	Certificate III in Stonemasonry	CPC32320
Certificate III in Air Conditioning & Refrigeration	UEE32220	Certificate III in Signs and Graphics	CPC30216
Certificate III in Wall and Floor Tiling	CPC31320	Certificate III in Solid Plastering	CPC31020
Certificate III in Wall and Ceiling Lining	CPC31220	Certificate III in Fire Protection	CPC32820
Certificate III in Joinery	CPC31920	Certificate IV in Building and Construction	CPC40120
Certificate III in Rigging	CPC30720	Diploma of Hydraulic Services Design	CPC50620
Certificate III in Painting and Decorating	CPC30620	Diploma of Building Design	CPP50921
Certificate III in Water Industry Operations	NWP30219	Diploma of Building & Construction	CPC50220

### Fees for your course

A range of criteria apply for course fees, access to government subsidised training, student loans, payment by instalment, fee concessions, and fee exemptions that are available to eligible students. The training for all or some of the courses listed is subsidised by the NSW Government under Smart and Skilled funding. Visit [tafensw.edu.au/enrol/fees](https://www.tafensw.edu.au/enrol/fees).

### Short courses you can study at TAFE NSW

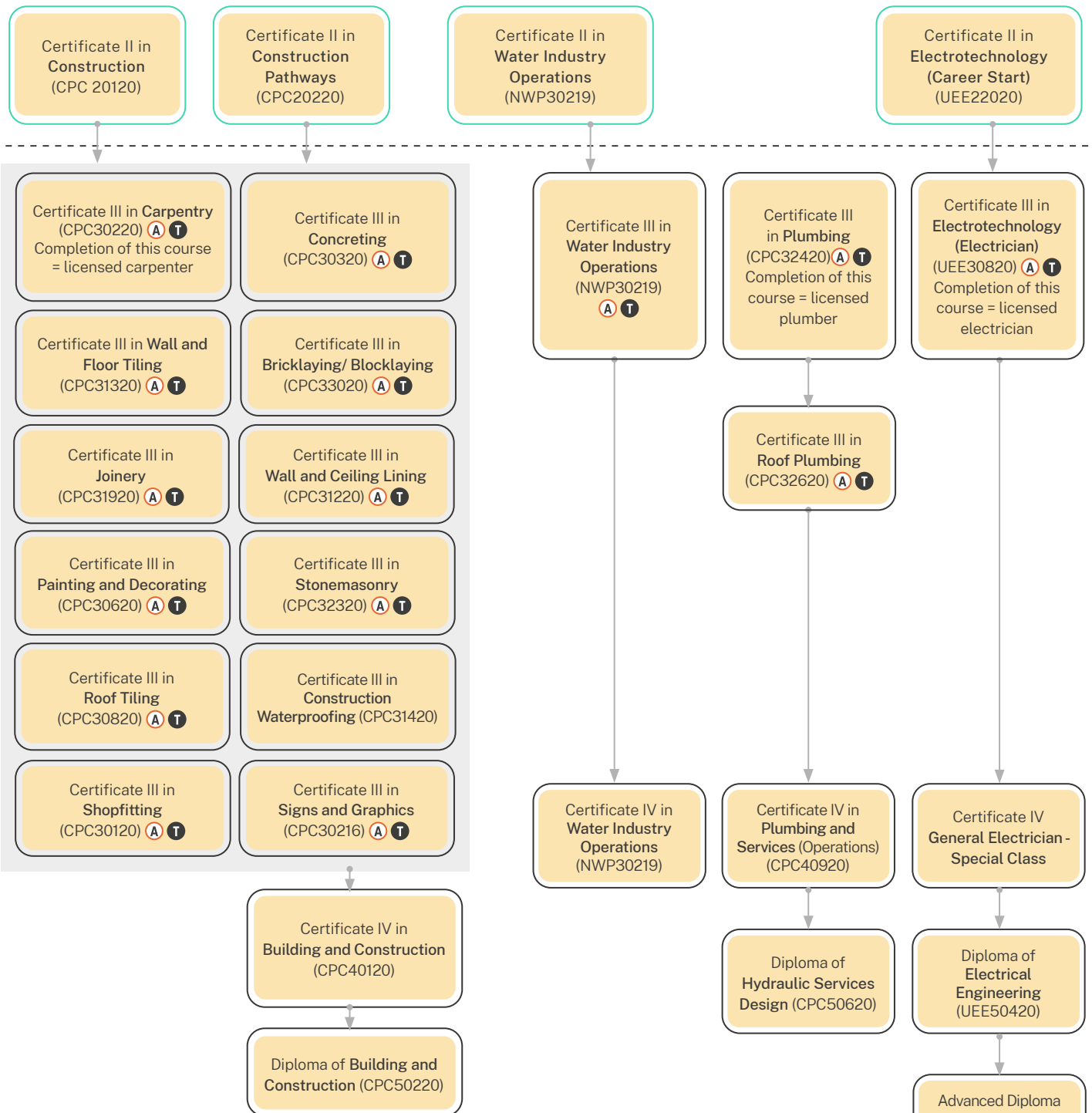
TAFE NSW has a selection of short courses available to study, that can help you build the essential building, construction and plumbing skills needed to kickstart and grow your career, or to help you round out your résumé.

Short Course	Code	Duration	Included Units of Study
Statement of Attainment in Licence to Erect, Alter and Dismantle Scaffolding - Basic Level	900-82671	1 week	CPCCLSF2001 Licence to erect, alter and dismantle scaffolding basic level
Statement of Attainment in Prepare to Work Safely in the Construction Industry-White Card	900-80636	1 day	CPCCWHS1001 Prepare to work safely in the construction industry
Statement of Attainment in Computer Aided Drafting-2D Introduction	900-81373	4 weeks	MEM30031A Operate computer-aided design (CAD) system to produce basic drawing elements.

[Visit our website for more short courses.](#)

### How you can grow your career

When you study with TAFE NSW, there are any number of courses that lead to an even greater number of career opportunities. However, before you can earn certain qualifications, you may have to complete some pre-requisite courses. Below are some examples of career progression pathways you could follow.



TWET (SCHOOL)

ENTER DIRECTLY AT ANY POINT

CONDITIONAL ENTRY

- A** Apprenticeship and School Based Apprenticeship
- T** Trade Related Pathway

Pathways to higher education include TAFE NSW degrees as well as other discipline related pathways with university partners to degrees. Additional information about articulation and credit transfer agreement can be located on the [TAFE NSW Credit Transfer website](#) and the specific partner website.

### For more information contact 131 601

\* This course is superseded. You can still enrol in this course, and you will be contacted if you need to transition into the next version when it is available.