



## Disability Sector

Now the National Disability Insurance Scheme (NDIS) is here, TAFE NSW has the qualifications for roles within Australia's most dynamic social reform, ensuring you deliver professional person-centred support and assistance. You can help empower people, while also providing a positive environment that encourages participation and the realisation of aspirations.



### Job opportunities

Employment for aged or disabled carers in NSW is expected to grow by 6.1% over three years to 2025-26 and create more than 4,600 jobs.



### Industry partnerships

Study with TAFE NSW for the opportunity to experience to undertake work placements with leading disability sector providers.



### Annual growth +14.9% ^

Health Care and Social Assistance has been the primary provider of new jobs in the Australian labour market since the 1990s, and that strong performance is projected to continue with an increase by 249,500 (or 14.9%) of new jobs over the five years to November 2026.

## Qualifications you can earn at TAFE NSW

There can be no more rewarding career than helping members of our community to be the very best they can be. That's what a career in Disability services offers, and you can set yourself up for a career in this sector with a course from TAFE NSW.

Course	Code
Certificate III in Individual Support (Disability)	CHC33015
Certificate III in Individual Support (Home and Community)	CHC33015
Certificate III in Community Services	CHC32015
Certificate III in Allied Health Assistance	HLT33015
Certificate IV in Disability	CHC43115
Certificate IV in Mental Health	CHC43315

Course	Code
Certificate IV in Allied Health Assistance	HLT43015
Diploma of Mental Health	CHC53315
Diploma of Community Services	CHC52015
Diploma of Nursing	HLT54121
Bachelor of Community Services	HE20528
Graduate Certificate in Leadership	HE20503

### Fees for your course

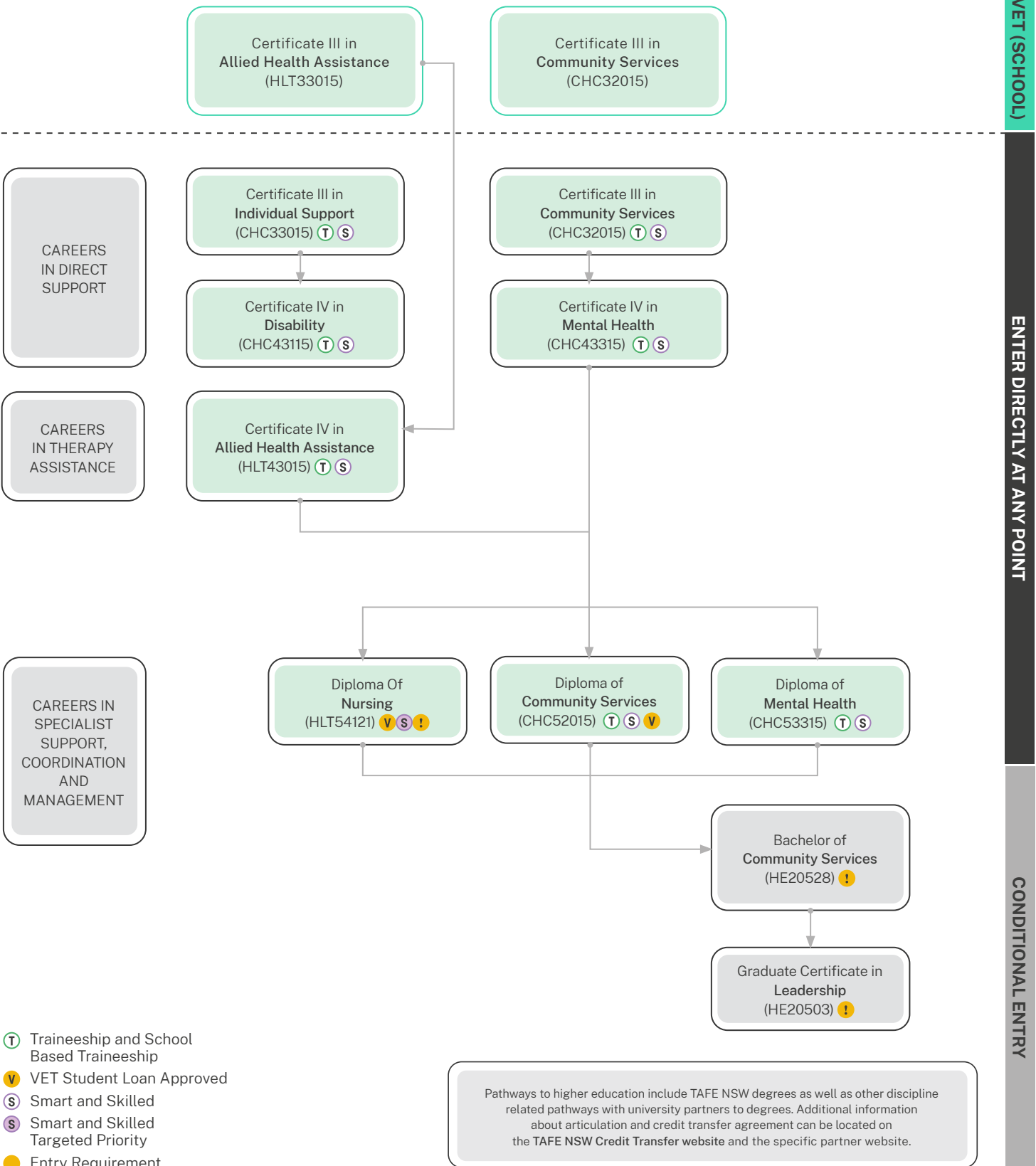
A range of criteria apply for course fees, access to government subsidised training, student loans, payment by instalment, fee concessions, and fee exemptions that are available to eligible students. The training for all or some of the courses listed is subsidised by the NSW Government under Smart and Skilled funding. Visit [tafensw.edu.au/enrol/fees](http://tafensw.edu.au/enrol/fees).

<sup>1</sup> Source: TAFE NSW Strategy and Research based on Deloitte Access Economics forecasts (March 2022)

<sup>^</sup> Source: LMI 2022 [<https://labourmarketinsights.gov.au/industries/industry-details?industryCode=Q>] Accessed 28 July 2022

### How you can grow your career

When you study with TAFE NSW, there are any number of courses that lead to an even greater number of career opportunities. However, before you can earn certain qualifications, you may have to complete some pre-requisite courses. Below are some examples of career progression pathways you could follow.



TVET (SCHOOL)

ENTER DIRECTLY AT ANY POINT

CONDITIONAL ENTRY

For more information contact 131 601