

Health Administration

Are you passionate about helping others? Create a career you can be truly proud of when you study Health Administration courses at TAFE NSW. You will learn about health administration, medical terminology and business skills. Our highly experienced teachers will give you the practical skills and knowledge you need to succeed in your health administration career.



Job opportunities

Health administration careers are available in private or public health service settings such as hospitals, community health centres, private practice and allied health.



Projected Growth +1.7%[^]

Employment is projected to grow by 1.7% in NSW over three years to 2025-26.

Qualifications you can earn at TAFE NSW

Nurture your desire to help others and make a positive impact every day in the rapidly evolving world of health administration. TAFE NSW courses can provide you with a wide range of administrative healthcare skills for careers in this diverse and growing sector.

Course	Code
Certificate III in Business (Medical Administration)	BSB30120
Certificate III in Health Administration	HLT37315
Certificate IV in Health Administration	HLT47315
Certificate IV in Medical Practice Assisting	HLT47715

Course	Code
Certificate IV in Community Pharmacy Dispensary	SIR40216
Diploma of Practice Management	HLT57715
Bachelor of Business	HE20514

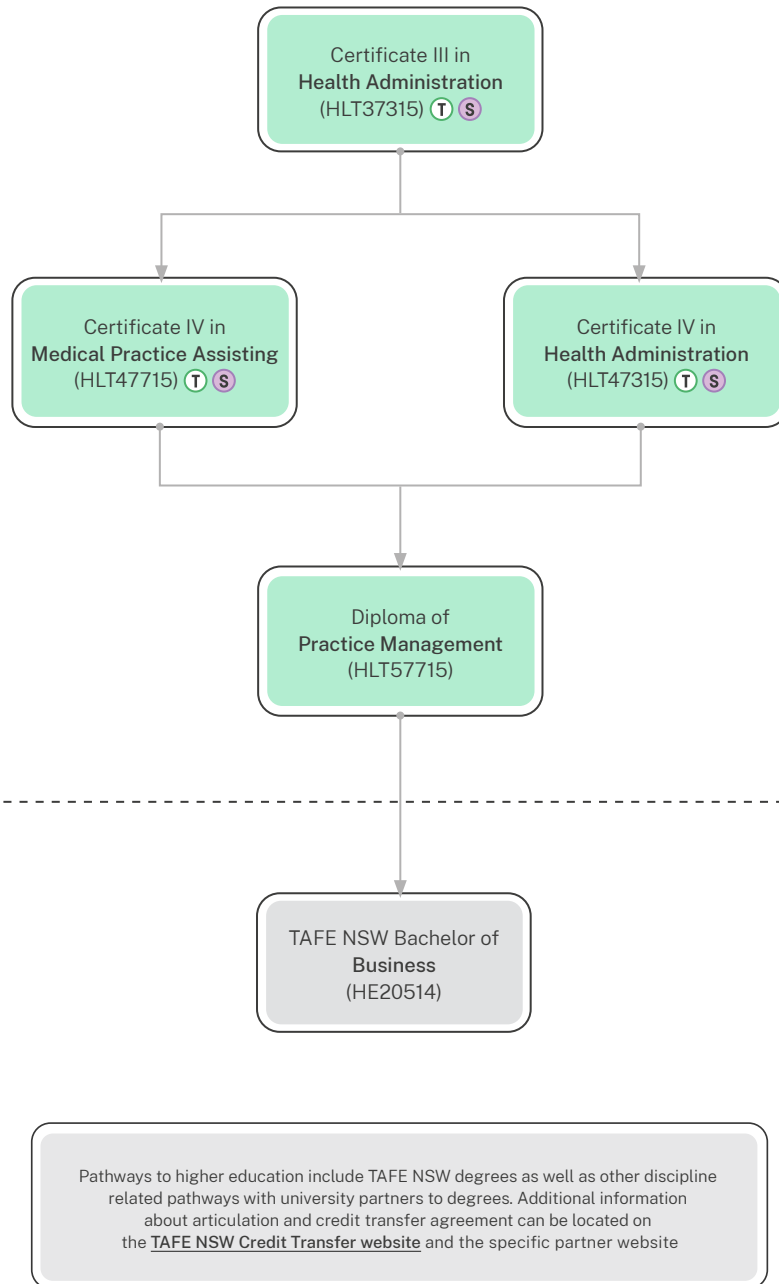
Fees for your course

A range of criteria apply for course fees, access to government subsidised training, student loans, payment by instalment, fee concessions, and fee exemptions that are available to eligible students. The training for all or some of the courses listed is subsidised by the NSW Government under Smart and Skilled funding. Visit [tafensw.edu.au/enrol/fees](https://www.tafensw.edu.au/enrol/fees).

[^] Source: TAFE NSW Strategy and Research based on Deloitte Access Economics forecasts (March 2022)

How you can grow your career

When you study with TAFE NSW, there are any number of courses that lead to an even greater number of career opportunities. However, before you can earn certain qualifications, you may have to complete some pre-requisite courses. Below are some examples of career progression pathways you could follow.



ENTER DIRECTLY AT ANY POINT

CONDITIONAL ENTRY

- T** Traineeship and School Based Traineeship
- S** Smart and Skilled Targeted Priority

For more information contact 131 601