



AGED CARE

Australia has an ageing population, which is increasing demand for aged care and services. Working with older people can be a rewarding, meaningful and important career, as you can be instrumental in improving quality of life. Because of the exciting technological developments and other advances, there are many career options and openings available in the aged care industry. It might be a perfect career choice for you - and your first steps could be with TAFE NSW.



Job opportunities

Healthcare and social assistance are Australia's largest employing industries (NSC 2021), with nearly 250,000 people are currently employed in direct care roles in Australia's aged care sector (AIHW 2018).



Future opportunities

There is very strong projected growth in the aged care sectors, driven by increasing demand from an ageing population and longer life expectancies (DESE 2021). Jobs in this field are also less likely to be automated by technology (NSC 2021).



Industry growth

The workforce needs to grow to almost 1 million people by 2050, to meet the needs of the increasing numbers of older Australians (DoH 2017).

QUALIFICATIONS YOU CAN EARN AT TAFE NSW

Ensure that your aged care career gets off to the best start possible, by enrolling in a hands-on, practical course, designed to give you the professional skills and knowledge you need. By studying a TAFE NSW course, not only can you earn an industry-recognised qualification in a range of aged care areas, but you will also ensure that you have the support you need to succeed.

Course	Code	Duration
Certificate III in Individual Support	CHC33015	18 weeks
Certificate III in Individual Support (Ageing)	CHC33015	18 weeks
Certificate III in Individual Support (Aged Care)	CHC33015	18 weeks
Certificate III in Individual Support (Home and Community)	CHC33015	18 weeks
Certificate III in Community Services	CHC32015	27-36 weeks
Certificate III in Allied Health Assistance	HLT33015	36 weeks
Certificate IV in Ageing Support	CHC43015	36 weeks
Certificate IV in Leisure and Health	CHC43415	36 weeks
Certificate IV in Allied Health Assistance	HLT43015	40 weeks

Course	Code	Duration
Diploma of Nursing	HLT54115*	2 years
Diploma of Community Services	CHC52015	18 months - 2 years
Diploma of Community Services (Case Management)	CHC52015	18 months - 2 years
Diploma of Financial Counselling	CHC51115	18 months - 2 years
Bachelor of Community Services	HE20528	3 years
Graduate Certificate in Client Assessment & Case Management	CHC82015	2 years
Graduate Certificate in Leadership	HE20503	1-2 semesters

FEES FOR YOUR COURSE

A range of criteria apply for course fees, access to government subsidised training, student loans, payment by instalment, fee concessions, and fee exemptions that are available to eligible students. The training for all or some of the courses listed is subsidised by the NSW Government under Smart and Skilled funding. Visit tafensw.edu.au/enrol/fees.

AGED CARE

SHORT COURSES YOU CAN STUDY AT TAFE NSW

TAFE NSW also offers a range of customised short courses. These include areas in mental health and wellbeing, with topics such as trauma informed care, clinical skills such as infection prevention and control and business skills like leadership, customer service and workplace health and safety.

Short Course	Code	Duration	Included Units of Study
Statement of Attainment in First Aid	900-81000	1 day	HLTAID003* Provide first aid This course will provide you with up to date first aid procedures. You will learn how to respond in an emergency situation, communicate details of the incident and evaluate your own performance. (Please note, this course is superseded by HLTAID011).
Statement of Attainment in Cardiopulmonary Resuscitation	900-80389	1 day	HLTAID001* Provide cardiopulmonary resuscitation Are you required to provide CPR in your workplace or community, or are compassionate about learning a skill that could save lives? This course will teach you how to appropriately respond to an emergency situation, perform CPR procedures and clearly communicate details of the incident. (Please note, this course is superseded by HLTAID009).
Statement of Attainment in Entry into Care Roles Skill Set	CHCSS00114	4 weeks (FT) 9 weeks (PT)	CHCCCS015 Provide individualised support HLTINFO01 Comply with infection prevention and control policies and procedures HLTWHS002 Follow safe work practices for direct client care This course provides an introduction to working within the aged care and disability support sectors. It teaches the entry level skills and knowledge required to provide basic support services to older people and people with a disability. This skill set responds to an industry need as a result of COVID-19 and is time limited to the pandemic and recovery phase (currently valid until 30 June 2021).
Palliative Approach Skill Set	CHCSS00105	3 weeks	CHCCCS017 Provide loss and grief support CHCPAL001 Deliver care services using a palliative approach This skill set reflects the skill requirements for work supporting people requiring palliative care.
Assist Clients with Medication Skill Set	CHCSS00070	8 weeks (PT)	HLTAAP001 Recognise healthy body systems HLTHPS006 Assist clients with medication This skill set is for people working in various care and support roles in the community services industry who wish to develop skills in supporting people to self-administer medication. This skill set has been endorsed by industry as suitable for individuals who hold a qualification at Certificate III level or higher in an area involving provision of direct client care or support.
TAFE Statement in Accidental Counselling	800-000408	1 day	800-000408A Accidental Counselling Accidental Counsellor training is a practical mental health training workshop that provides non-counsellors with a range of skills to work effectively with people who may be distressed, agitated or in crisis. It gives participants a practical framework, with skills in reflective listening, dealing with crisis, setting boundaries and self-care. (Non-Nationally Recognised Training).

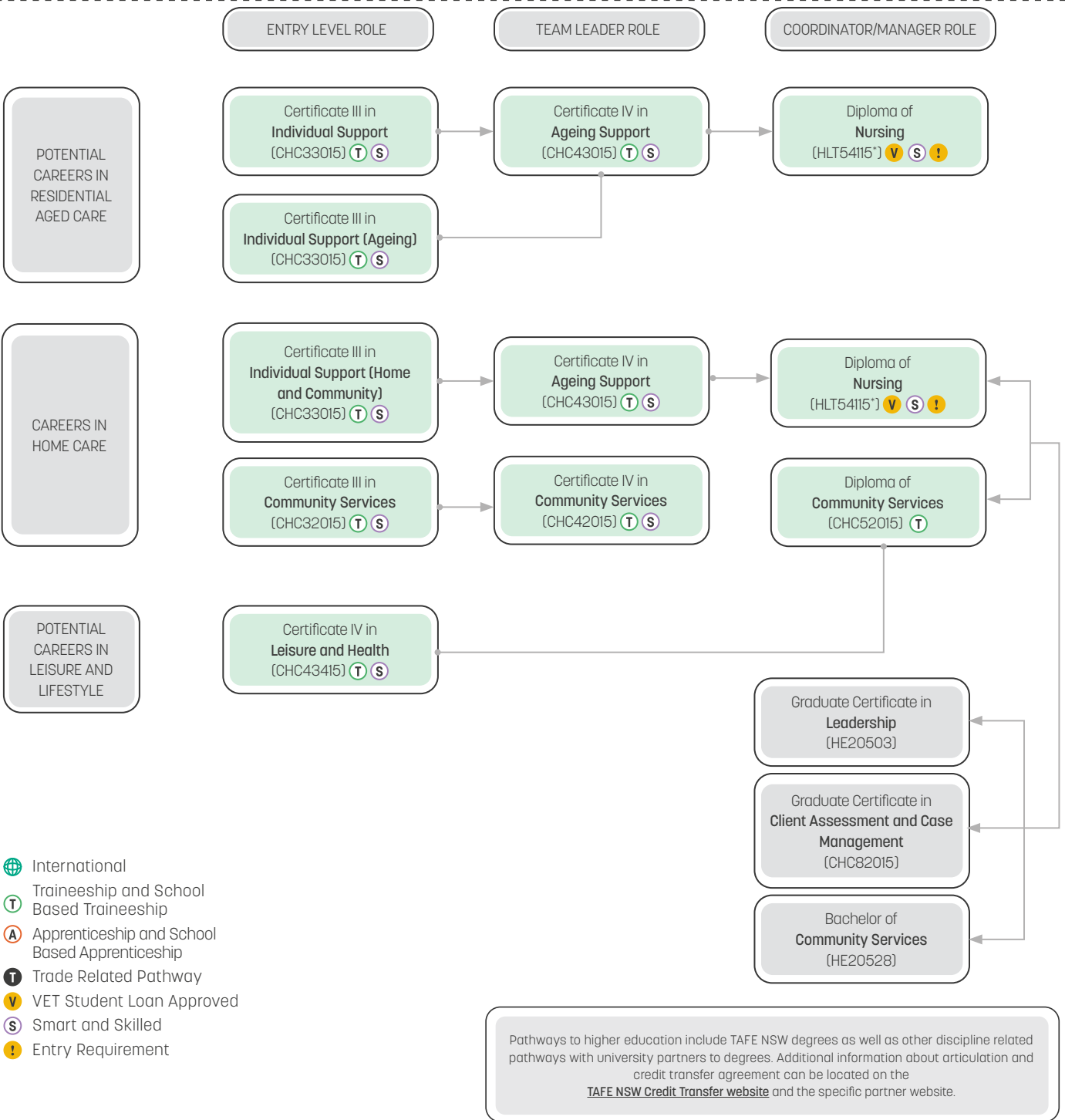
[Visit our website for more short courses.](#)

* This course is superseded. You can still enrol in this course, and you will be contacted if you need to transition into the next version when it is available.

Disclaimer: Please check to ensure that courses are currently being offered at your preferred TAFE NSW location. Course delivery and duration may also vary between TAFE NSW locations, so please confirm before enrolling. Fee free eligibility may apply. Correct at time of publication (June 2021). RT0 90003 | CRIC05 00591E | HEP PRV12049

HOW YOU CAN GROW YOUR CAREER

When you study with TAFE NSW, there are any number of courses that lead to an even greater number of career opportunities. However, before you can earn certain qualifications, you may have to complete some pre-requisite courses. Below are some examples of career progression pathways you could follow.



- 🌐 International
- T Traineeship and School Based Traineeship
- A Apprenticeship and School Based Apprenticeship
- T Trade Related Pathway
- V VET Student Loan Approved
- S Smart and Skilled
- ! Entry Requirement

Pathways to higher education include TAFE NSW degrees as well as other discipline related pathways with university partners to degrees. Additional information about articulation and credit transfer agreement can be located on the [TAFE NSW Credit Transfer website](#) and the specific partner website.

TVET (SCHOOL)

ENTER DIRECTLY AT ANY POINT

CONDITIONAL ENTRY

FOR MORE INFORMATION CONTACT 131 601

* This course is superseded. You can still enrol in this course, and you will be contacted if you need to transition into the next version when it is available.
Disclaimer: Please check to ensure that courses are currently being offered at your preferred TAFE NSW location. Course delivery and duration may also vary between TAFE NSW locations, so please confirm before enrolling. Fee free eligibility may apply. Correct at time of publication (June 2021). RTO 90003 | CRICOS 00591E | HEP PRV12049