



## AGRICULTURE

If you have a passion for plants and animals, soils, sustainability and the great outdoors, then studying agriculture could be the perfect fit for you. TAFE NSW offer courses with practical experience for working in agriculture, focussing on food and animal production and farm management. Stay up to date with technology and management practices for all types of livestock and crops. This sector can offer you the chance to make a real difference to the environment, and to the people of Australia.



### Job opportunities

Agriculture Technician, Farm worker, Farm Manager, Wool Handler, Woolclasser, Shearer, Viticulturist, Production Horticulturist.



### Industry partnerships

Australian Wool Exchange (AWEX), Dairy Australia, NSW Wine Industry Association, Horticulture Innovation.



### Annual growth

Domestic demand for produce has ensured employment across this sector remains strong.



### Industry Outlook

There are no major players in the crops and livestock sector, with more than 99% of sheep and beef cattle farms employing fewer than 20 workers. The grain growing sector mainly consists of family farms operating on a relatively small scale.

## QUALIFICATIONS YOU CAN EARN AT TAFE NSW

Whether you're looking for a career working with livestock, a career working with crops, or a career ensuring that the Australian agriculture industry remains strong, long into the future, TAFE NSW has a range of courses to help you become qualified. Designed by industry experts, our courses give you the professional skills and knowledge you need to find employment, and kickstart your career.

Course	Code	Duration
Certificate II Agriculture	AHC20116	1 Year
Certificate II in Rural Operations	AHC21216	1 Year
Certificate II in Shearing	AHC21316	1 Year
Certificate II in Wool Handling	AHC21416	1 Year
Certificate III in Advanced Wool Handling	AHC33116	1 Year
Certificate III in Agriculture	AHC30116	1 Year
Certificate III in Agriculture (Dairy Production)	AHC30216	1 Year
Certificate III in Feedlot Operations	AHC33316	1 Year
Certificate III in Production Horticulture	AHC30616*	1 Year

Course	Code	Duration
Certificate III in Shearing	AHC32916	1 Year
Certificate III in Wool Clip Preparation	AHC33016	1 Year
Certificate IV in Agriculture	AHC40116	1 Year
Certificate IV in Organic Farming	AHC41616	1 Year
Certificate IV in Permaculture	AHC42116	1 Year
Certificate IV in Wool Classing	AHC41316	1 Year
Diploma of Agriculture	AHC50116	1 Year
Diploma of Organic Farming	AHC51816	1 Year
Diploma of Permaculture	AHC52116	1.5 Years

### FEES FOR YOUR COURSE

A range of criteria apply for course fees, access to government subsidised training, student loans, payment by instalment, fee concessions, and fee exemptions that are available to eligible students. The training for all/some of the courses listed is subsidised by the NSW Government under Smart and Skilled funding. Visit [tafensw.edu.au/enrol/fees](https://www.tafensw.edu.au/enrol/fees).

## AGRICULTURE

### SHORT COURSES YOU CAN STUDY AT TAFE NSW

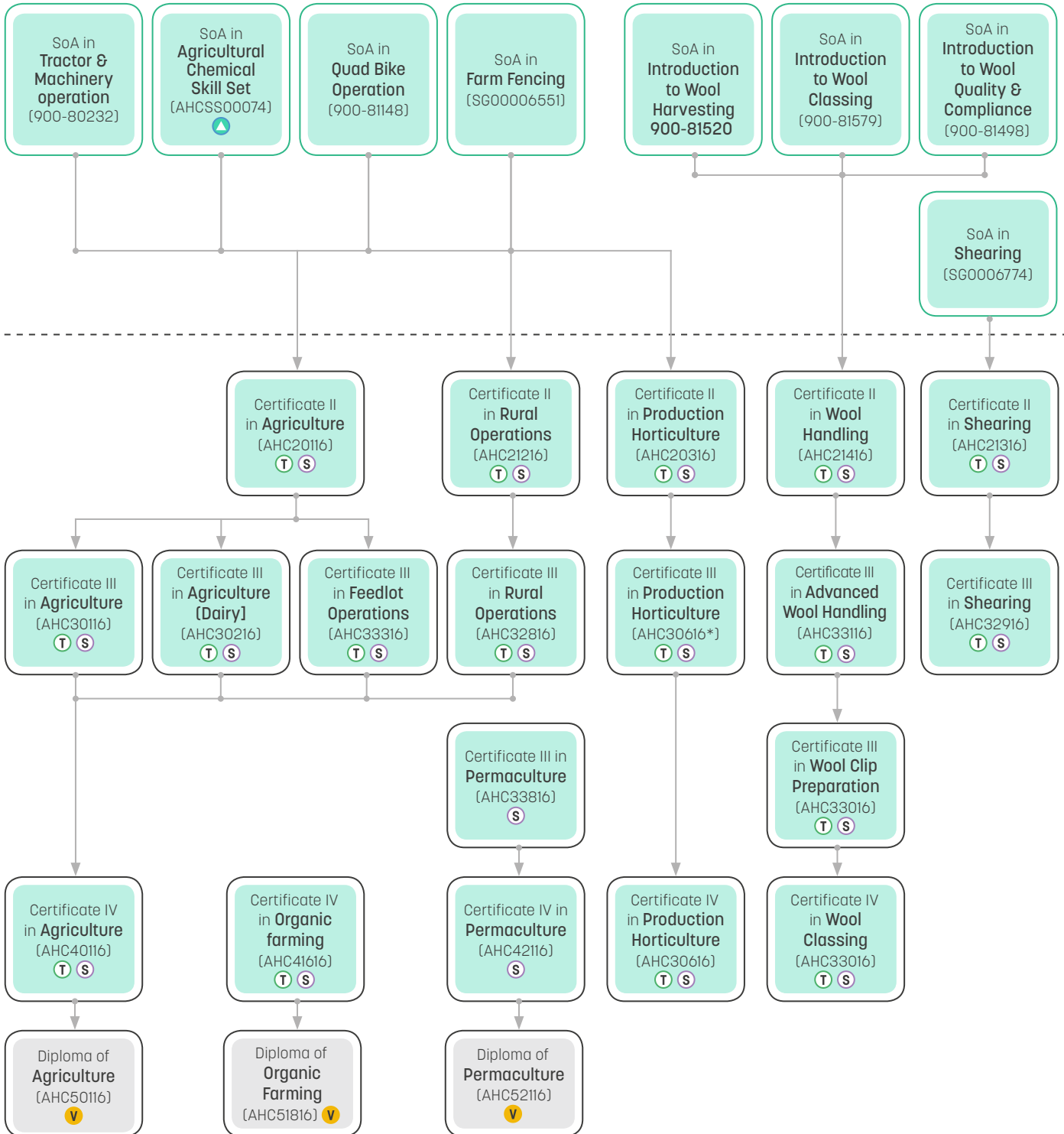
There is a wide selection of short courses available to study at TAFE NSW. Some are designed to help you become professionally certified in a variety of operations, and others are designed to help you build the entry level skills necessary to kickstart a career in a range of agricultural fields.

Short Course	Code	Included Units of Study
Agricultural Chemical Skill Set	AHCSS00074	Prepare and apply chemicals to control pest, weeds and diseases (AHCCHM307) Transport and store chemicals (AHCCHM304)
Statement of Attainment in Farm Fencing	SG00006910	Plan and construct an electric fence (AHCINF302) Plan and construct conventional fencing (AHCINF303)
Statement of Attainment in Basic Farm Skills	SG00006773	Transport and store chemicals (AHCCHM304) Prepare and apply chemicals to control pest, weeds and diseases (AHCCHM307) Plan and construct an electric fence (AHCINF302) Plan and construct conventional fencing (AHCINF303)
Statement of Attainment in Safely Handle Livestock	900-81676	Handle livestock using basic techniques (AHCLSK205) Muster and move livestock (AHCLSK210) Participate in work health and safety processes (AHCWHS201)
Statement of Attainment in Tractors and Machinery Operation	900-80232	Inspect and clean machinery for plant, animal and soil material (AHCBI0201) Operate tractors (AHCMOM202) Operate machinery and equipment (AHCMOM304)
Statement of Attainment in Quad Bike Operation	900-81148	Operate quad bikes (AHCMOM217)
Statement of Attainment in Quad Bike and Two Wheel Motorbikes	900-80615	Operate two wheel motorbikes (AHCMOM201) Operate quad bikes (AHCMOM217)
Statement of Attainment in Side By Side Utility Vehicles	900-81671	Operate side by side utility vehicles (AHCMOM216)
Statement of Attainment in introduction to Wool Quality and Compliance	900-81498	Document a wool clip (AHCWOL307), Implement and monitor quality assurance procedures (AHCWRK401) Appraise wool using industry descriptions (AHCWOL301) Maintain work health and safety processes (AHCWHS401)
Statement of Attainment in introduction to Wool Harvesting	900-81520	Assist in preparing for shearing and crutching (AHCSHG202) Crutch sheep (AHCSHG201) Grind combs and cutters for machine shearing (AHCSHG205) Prepare handpiece and downtube for machine shearing (AHCSHG206) Participate in work health and safety processes (AHCWHS201) Pen sheep (AHCWOL201) Perform board duties (AHCWOL2020) Carry out wool pressing (AHCWOL203) Undertake basic shearing and crutching (AHCSHG210)
Statement of Attainment in introduction to Wool Classing	900-81579	Prepare fleece wool for classing (AHCWOL304) Prepare skirtings and oddments (AHCWOL305) Perform shed duties (AHCWOL311) Prepare wool based on its characteristics (AHCWOL303) Press wool for a clip (AHCWOL310)
Statement of Attainment in Shearing	SG0006774	Crutch sheep (AHCSHG201) Undertake basic shearing and crutching (AHCSHG210) Participate in work health and safety processes (AHCWHS201)

[Visit our website for more short courses.](#)

## HOW YOU CAN GROW YOUR CAREER

When you study with TAFE NSW, there are any number of courses that lead to an even greater number of career opportunities. However, before you can earn certain qualifications, you may have to complete some pre-requisite courses. Below are some examples of career progression pathways you could follow.



SHORT COURSES

T/ET (SCHOOL) AND ENTER DIRECTLY AT ANY POINT

CONDITIONAL ENTRY

SoA = Statement of Attainment

- A** Accredited short course
- T** Traineeship and School Based Traineeship
- S** Smart and Skilled
- V** VET Student Loan Approved

Pathways to higher education include TAFE NSW degrees as well as other discipline related pathways with university partners to degrees. Additional information about articulation and credit transfer agreement can be located on the [TAFE NSW Credit transfer website](#) and the specific partner website.

**FOR MORE INFORMATION CONTACT 131 601**