



## Allied Health

Our qualifications in Allied Health can help you to enter a fulfilling career that improves the health and wellbeing of your community. You will learn how the industry works and gain the knowledge and skills to make a difference in peoples lives. When you study at TAFE NSW you will have the opportunity to get hands-on in our simulated or real world facilities, which means you'll always be ahead of the pack, no matter what your career stage.



### Job opportunities<sup>1</sup>

Job opportunities in allied health are projected to increase in across health, disability and aged care.



### Annual growth 14.2%<sup>2</sup>

Allied Health is part of the Health and Social Care sector, and has an 14.2% expected growth through to 2025.



### Industry partnerships

TAFE NSW engages with key industry bodies and employers to ensure job ready graduates.



### Future opportunities<sup>3</sup>

The ageing population and increased burden of chronic conditions will drive growth and innovation in the allied health sector.

## Qualifications you can earn at TAFE NSW

TAFE NSW has a range of certificates, diplomas and advanced diplomas to give you the skills you need for a rewarding career in Allied Health. Whether you want to assist in a dental practice, audiometry or leisure and health, we have a course that's perfect for you.

| Course                                      | Code      | Duration    |
|---|-----------|-------------|
| Certificate III in Allied Health Assistance | HLT33015  | 29 weeks    |
| Certificate IV in Allied Health Assistance  | HLT43015  | 18 weeks    |
| Certificate III in Dental Assisting         | HLT35015* | 18 weeks    |
| Certificate IV in Dental Assisting          | HLT45015* | 18 weeks    |
| Diploma of Dental Technology                | HLT55118  | 2 years     |
| Advanced Diploma of Dental Prosthetics      | HLT65015  | 2 years P/T |

| Course                               | Code     | Duration                          |
|--------------------------------------|----------|-----------------------------------|
| Certificate IV in Audiometry         | HLT47415 | Self-directed study up to 2 years |
| Diploma of Audiometry                | HLT57415 | Self-directed study up to 2 years |
| Certificate IV in Optical Dispensing | HLT47815 | 36 weeks P/T                      |
| Certificate IV in Leisure and Health | CHC43415 | 21 weeks F/T/36 weeks PT          |

### Fees for your course

A range of criteria apply for course fees, access to government subsidised training, student loans, payment by instalment, fee concessions, and fee exemptions that are available to eligible students. The training for all or some of the courses listed is subsidised by the NSW Government under Smart and Skilled funding. Visit [tafensw.edu.au/enrol/fees](https://tafensw.edu.au/enrol/fees).

Sources: 1. [www.nationalskillscommission.gov.au/health-care-and-social-assistance](http://www.nationalskillscommission.gov.au/health-care-and-social-assistance) accessed on 21/04/2021. 2. NSC, 2021. 3. [nationalindustryinsights.aisc.net.au/industries/sport-fitness-and-recreation/fitness](http://nationalindustryinsights.aisc.net.au/industries/sport-fitness-and-recreation/fitness) accessed on 21/04/2021.

\*This course is superseded. You can still enrol in this course, and you will be contacted if you need to transition into the next version when it is available.

Disclaimer: Please check to ensure that courses are currently being offered at your preferred TAFE NSW location. Course delivery and duration may also vary between TAFE NSW locations, so please confirm before enrolling. Fee free eligibility may apply. Correct at time of publication (November 2021). RTO 90003 | CRICOS 00591E | HEP PRV12049

## Allied Health

### Short courses you can study at TAFE NSW

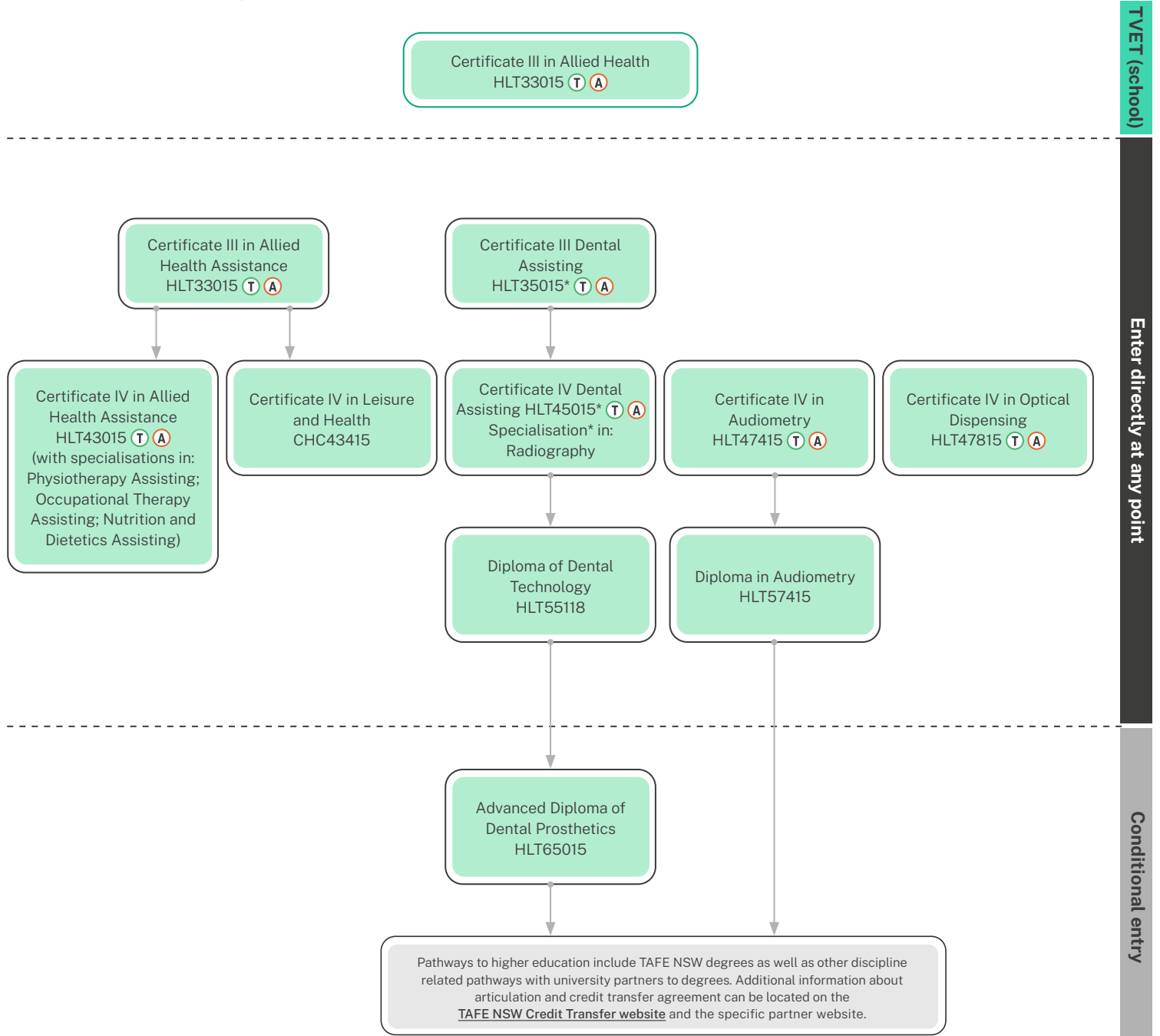
TAFE NSW has a selection of short courses available to study, that can help you build the essential Pharmacy support skills needed to kickstart and grow your career, or to help you round out your résumé.

| Short Courses   | Code                 | Duration                  | Included Units of Study   |
|---|----------------------|---------------------------|---|
| Statement of Attainment in Introduction to Working in the Health Industry | SG00006955-21OTE-117 | Up to 12 weeks            | <b>CHCCOM005 Communicate and work in health or community services</b><br><b>CHCDIV001 Work with diverse people</b><br><b>HLTWHS001 Participate in workplace health and safety</b><br>The nationally accredited Statement of Attainment in Introduction to working in the Health Industry is a short course suited to those looking to launch a career in the rewarding Health and Community Services sector. You will learn the knowledge you need to start your health journey and be prepared for further study or entry level roles in the industry. |
| Statement of Attainment in Introduction to Aged Care                      | SG00007486-21NWR-041 | 6 weeks                   | <b>CHCAGE001 Facilitate the empowerment of older people</b><br><b>CHCCOM005 Communicate and work in health or community services</b><br>The nationally accredited Statement of Attainment in Introduction to Aged Care is a short course suited to those looking to launch a career in the aged care sector. You will learn the knowledge you need to start your aged care journey and be prepared for further study or entry level roles in the industry.  |
| Statement of Attainment in Medical Terminology                            | SG00002777           | 2 weeks                   | <b>BSBMED301 Interpret and apply medical terminology appropriately</b><br>This national accredited unit describes the skills and knowledge required to understand and respond to instructions; to carry out routine tasks and communicate with a range of internal/external clients in a medical environment; as well as use appropriate medical terminology.   |
| Statement of Attainment in Mental Health #2                               | SG00001254           | Part time over 8-12 weeks | <b>CHCMHS001 Work with people with mental health issues</b><br>The nationally accredited Statement of Attainment in Mental Health prepares you to work effectively in community services with those experiencing mental health issues. You will develop the tools you need, both professionally and personally, to empower diverse groups of people with complex issues.  |
| TAFE Statement in Accidental Counselling                                  | 800-00408            | 5 hours                   | This short course aims to provide non counsellors with a range of basic counselling skills and principles. The skills and knowledge learned is useful for people who often find themselves in an 'accidental counselling roles' supporting friends, children, colleagues, customers, or strangers, in times of distress or difficulty. You will also gain a practical framework for managing issues, and a sense of structure and confidence for when you support people.   |
| Statement of Attainment in First Aid                                      | 900-81000V01         | 1 day                     | <b>HLTAID003 Provide first aid</b><br>This course will provide you with up to date first aid procedures. You will learn how to respond in an emergency situation, communicate details of the incident and evaluate your own performance. (Please note, this course is superseded by HLTAID011).   |
| Statement of Attainment in Cardiopulmonary Resuscitation                  | 900-80389V01         | 1 day                     | <b>HLTAID001 Provide cardiopulmonary resuscitation</b><br>Are you required to provide CPR in your workplace or community, or are compassionate about learning a skill that could save lives? This course will teach you how to appropriately respond to an emergency situation, perform CPR procedures and clearly communicate details of the incident. (Please note, this course is superseded by HLTAID009).  |

[Visit our website for more short courses.](#)

## How you can grow your career

When you study with TAFE NSW, there are any number of courses that lead to an even greater number of career opportunities. However, before you can earn certain qualifications, you may have to complete some pre-requisite courses. Below are some examples of career progression pathways you could follow.



- T Traineeship and School Based Traineeship
- A Apprenticeship and School Based Apprenticeship

**For more information contact 131 601**

\*This course is superseded. You can still enrol in this course, and you will be contacted if you need to transition into the next version when it is available.  
Disclaimer: Please check to ensure that courses are currently being offered at your preferred TAFE NSW location. Course delivery and duration may also vary between TAFE NSW locations, so please confirm before enrolling. Fee free eligibility may apply. Correct at time of publication (November 2021). RTO 90003 | CRICOS 00591E | HEP PRV12049