



## HORTICULTURE AND LANDSCAPING

If you are passionate about horticulture or landscaping, you like getting hands-on, have a green thumb, or have a love for constructed landscapes, gardens, or sports arenas, then a career in horticulture and landscaping could be perfect for you. Horticulture is one of the fastest growing industries in Australia, and this sector plays an important role in delivering economic, social and environmental value. Our courses open doors and offer you a wide range of rural and urban opportunities.



### Job opportunities

Horticulturist, landscape construction worker, landscape designer, greenkeeper, arborist.



### Industry partnerships

Australian Institute of Horticulture, Arboriculture Australia, The Landscape Association, Australian Sports Turf Managers Association, Australian Institute of Landscape Designers and Managers.



### Annual growth

Employment for this sector is projected to rise by 0.7%<sup>^</sup> (Landscaping) and 1.6%<sup>^</sup> (Horticulture) annually to 2026.



### Annual revenue growth

Annual revenue growth of around 2.0%<sup>^</sup> according to industry forecast to 2025.

## QUALIFICATIONS YOU CAN EARN AT TAFE NSW

When you want to kickstart a career exploring the outdoors, and putting your green thumb to work with all things nature, you'll need the professional skills and knowledge built by studying a TAFE NSW qualification. When you study at TAFE NSW, not only can you earn an industry-recognised TAFE NSW qualification in a range of horticulture and landscape construction course areas, but you will ensure that your career gets the best start possible.

| Course                                    | Code      | Duration    |
|---|-----------|-------------|
| Diploma of Arboriculture                  | AHC50516* | 1.5 Years   |
| Diploma of Horticulture                   | AHC50416  | 1-2 Years   |
| Diploma of Landscape Design               | AHC50616  | 1.5-3 Years |
| Diploma of Sports Turf Management         | AHC51016* | 0.5-1 Year  |
| Certificate III in Arboriculture          | AHC30816* | 1.5-2 Years |
| Certificate III in Horticulture           | AHC30716  | 1.5-2 Years |
| Certificate III in Landscape Construction | AHC30916  | 1-3 Years   |

| Course                                     | Code      | Duration    |
|--|-----------|-------------|
| Certificate III in Production Horticulture | AHC30616* | 1 Year      |
| Certificate III in Production Nursery      | AHC31116  | 2-3 Years   |
| Certificate III in Parks and Gardens       | AHC31016  | 1-3 Years   |
| Certificate III in Retail Nursery          | AHC31216  | 1.5-2 Years |
| Certificate III in Sports Turf Management  | AHC31316* | 2.5-3 Years |
| Certificate II in Arboriculture            | AHC20516* | 0.5 Year    |
| Certificate II in Horticulture             | AHC20416  | 0.5-3 Years |

### FEES FOR YOUR COURSE

A range of criteria apply for course fees, access to government subsidised training, student loans, payment by instalment, fee concessions, and fee exemptions that are available to eligible students. The training for all/some of the courses listed is subsidised by the NSW Government under Smart and Skilled funding. Visit [tafensw.edu.au/enrol/fees](https://www.tafensw.edu.au/enrol/fees).

<sup>^</sup> Source: [myibisworld.com.au](https://www.myibisworld.com.au) Report R8922 and M6925 1/10/2020. Report A0300 and C1411 30/09/2020

\* This course is superseded. You can still enrol in this course, and you will be contacted if you need to transition into the next version when it is available.

Disclaimer: Please check to ensure that courses are currently being offered at your preferred TAFE NSW location. Course delivery and duration may also vary between TAFE NSW locations, so please confirm before enrolling. Fee free eligibility may apply. Correct at time of printing (June 2021). RTO 90003 | CRICOS 00591E | HEP PRV12049

## HORTICULTURE AND LANDSCAPING

### SHORT COURSES YOU CAN STUDY AT TAFE NSW

Give yourself a taste of the horticulture and landscaping industry, and expand your expertise with a TAFE NSW short course. TAFE NSW has a short course that can give you the edge when you're looking to kickstart your horticulture and landscaping career, as well as courses you can study if you're simply looking to gain a new and interesting set of skills.

| Short Course   | Code       | Duration                                  | Included Units of Study  |
|--|------------|---|--|
| Statement of Attainment in Agricultural Chemical                           | AHCSS00074 | 2 Days                                    | Prepare and apply chemicals to control pest, weeds and diseases (AHCCHM307), Transport and store chemicals (AHCCHM304).  |
| Statement of Attainment in Chainsaw Operations - Trim and cut              | 900-5292   | 2 Days                                    | Follow WHS Policies and Procedures (FWPCOR2205), Maintain Chainsaw (FWPCOT2237), Cut Material with a hand-held chainsaw (FWPCOT2238*), Trim and Cut felled trees (FWPCOT2239*).  |
| Statement of Attainment in Chainsaw Operations - Basic tree felling        | 900-81140  | 3 Days                                    | Follow WHS Policies and Procedures (FWPCOR2205), Maintain Chainsaw (FWPCOT2237), Cut Material with a hand-held chainsaw (FWPCOT2238*), Trim and Cut felled trees (FWPCOT2239*), Fall trees manually (basic) (FWPCOT2236*).   |
| Statement of Attainment in Chainsaw Operations - Intermediate tree felling | 900-5293   | 2 Days (with prerequisite)                | Follow WHS Policies and Procedures (FWPCOR2205), Maintain Chainsaw (FWPCOT2237), Cut Material with a hand-held chainsaw (FWPCOT2238*), Trim and Cut felled trees (FWPCOT2239*), Fall trees manually (basic) (FWPCOT2236*), Fall Trees manually (Intermediate) (FWPFGM3212*).   |
| Statement of Attainment in Chainsaw Operations - Advanced tree felling     | 900-81550  | 3 Days (with prerequisite and experience) | Follow WHS Policies and Procedures (FWPCOR2205), Maintain Chainsaw (FWPCOT2237*), Cut Material with a hand-held chainsaw (FWPCOT2238*), Trim and Cut felled trees (FWPCOT2239*), Fall trees manually (basic) (FWPCOT2236*), Fall Trees manually (Intermediate) (FWPFGM3212*), Fall trees manually (advanced) (FWPFGM3213*).  |
| Statement of Attainment towards AHC20416 Certificate II in Horticulture    | 717-12006  | 1 Year                                    | Plant trees and shrubs (AHCPCGD201), Prepare and maintain plant displays (AHCPCGD202), Assist with soil or growing media sampling and testing (AHC SOL202*), Participate in work health and safety processes (AHCWHS201), Assist with landscape construction work (AHCLSC201), Operate basic machinery and equipment (AHCMM203), Care for nursery plants (AHCNSY202*), Participate in environmentally sustainable work practices (AHCWRK209), Apply chemicals under supervision (AHCCHM201) Treat weeds (AHCPCMG201), Treat plant pests, diseases and disorders (AHCPCMG202), Observe and report on weather (AHCWRK201). |
| Statement of Attainment in Retail Nursery                                  | 900-80619  | 0.5 Year                                  | Pot up plants (AHCNSY201*), Care for nursery plants (AHCNSY202*), Recognise plants (AHCPCM201*), Participate in work health and safety processes (AHCWHS201).  |

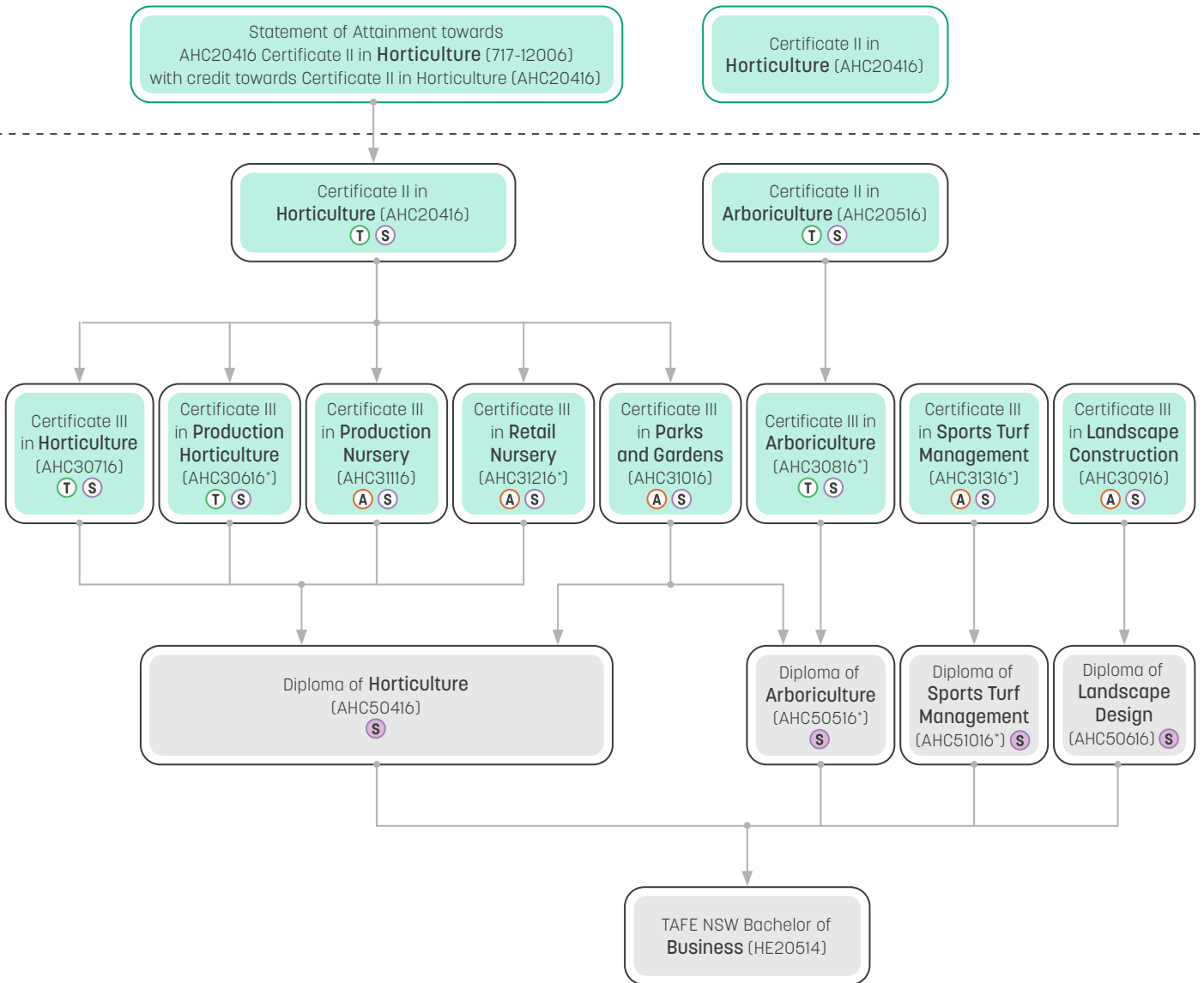
[Visit our website for more short courses.](#)

\* This unit is superseded.

Disclaimer: Please check to ensure that courses are currently being offered at your preferred TAFE NSW location. Course delivery and duration may also vary between TAFE NSW locations, so please confirm before enrolling. Fee free eligibility may apply. Correct at time of printing (June 2021). RTO 90003 | CRICOS 00591E | HEP PRV12049

## HOW YOU CAN GROW YOUR CAREER

When you study with TAFE NSW, there are any number of courses that lead to an even greater number of career opportunities. However, before you can earn certain qualifications, you may have to complete some pre-requisite courses. Below are some examples of career progression pathways you could follow.



- T Traineeship and School Based Traineeship
- A Apprenticeship and School Based Apprenticeship
- S Smart and Skilled
- S Smart and Skilled Targeted Priority

**FOR MORE INFORMATION CONTACT 131 601**