

**TAFE**NSW

## **IATC WEEKLY CONSTRUCTION STATUS UPDATE**

INSTITUTE OF APPLIED TECHNOLOGY  
**CONSTRUCTION (IATC)**

03 December 2021

# OUR IATC ROADMAP



IATC Open  
For  
Business



Q3 2021

Q4 2021

Q1 2022

Q2 2022

Q3 2022

Q4 2022

Q1 2023

**Contractor RTA  
and  
First Partner  
Workshop**

1

**Education Model**

Education Model agreed by  
all partners

3

**Marketing Campaign**

IATC Marketing Campaign begins ahead  
of enrolment period

5

**Operational  
Readiness**

Preparation for IAT opening

7

2

**Collaboration Agreements  
and Construction**

- Collaboration Agreements signed by Uni & principal industry partner
- Building construction commences

4

**Operating Model**

- Operating Model developed
- Product development
- Workforce planning
- Op Readiness plan refined

6

**Construction  
Complete**

Construction complete and  
ready for handover to business

We are here

- Recommendation to award made for building contractor
- First all partner workshop takes place



## HIGHLIGHTS AND ACHIEVEMENTS (WE 03/12/21)

- ✓ Site clearing well advanced
- ✓ Preparation for site accommodation and parking continues
- ✓ Erosion and sediment control works continue
- ✓ Preparation for Crown Development Verification Certificate 01
- ✓ Architectural design finalisation continues
- ✓ User group workshops have commenced



## NEXT STEPS (06/12/21-11/12/21)

### DECEMBER

- Site establishment continues
- Preparation for site accommodation and parking continues
- Delivery of civil machinery for ground works
- Crown Development Verification Certificate 01
- Civil stormwater works commence
- Installation of noise and vibration control monitors
- Installation of site cameras
- Site surveying works
- Delivery of permanent construction site accommodation
- Excavation and piling works commence



# PARKING AND TRAFFIC MOVEMENTS (WC 06/12/21)

Traffic movement through TAFE NSW Nepean – Kingswood Campus

	Monday 06/12/21	Tuesday 07/12/21	Wednesday 08/12/21	Thursday 09/12/21	Friday 10/12/21
6am	No work activity on site. <i>Builders Picnic</i>	Material deliveries. 2-3 truck 2-3	Bin changeover. 2-3 truck movements	Civil machinery/tipper trucks. 2-3 truck movements	Civil machinery/tipper trucks. 2-3 truck movements
8am					
10am		Site accomodation delivery. 4-5 truck movements	Site accomodation delivery. 3-4 truck movements		ADCO drone activity. Every Friday.
12pm					
2pm					
4pm					
6pm					



**TUESDAY 07/12/21- WEDNESDAY 08/12/21**

**Second Avenue**

**O'Connell Street**

**Work Site.**

**Carpark**

Traffic controllers are to escort construction trucks through carpark.

**REDUCE SPEED**

**PREPARE TO STOP**

**ONE WAY**

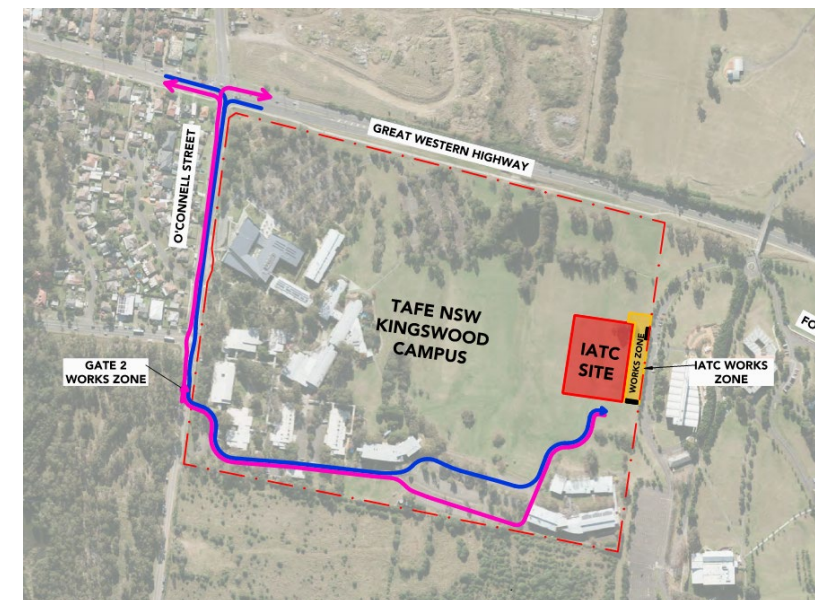
**15km/h**

All Permanent Signage is to be mounted on posts at a height of 2.2m above the level of the kerb to the underside of the sign and placed 1.0m clear of the travelled path. (Refer to AS1742.3 Clause 4.3.2 Positioning of Devices - Built up areas)

1.8m  
2.2m

15m  
15m

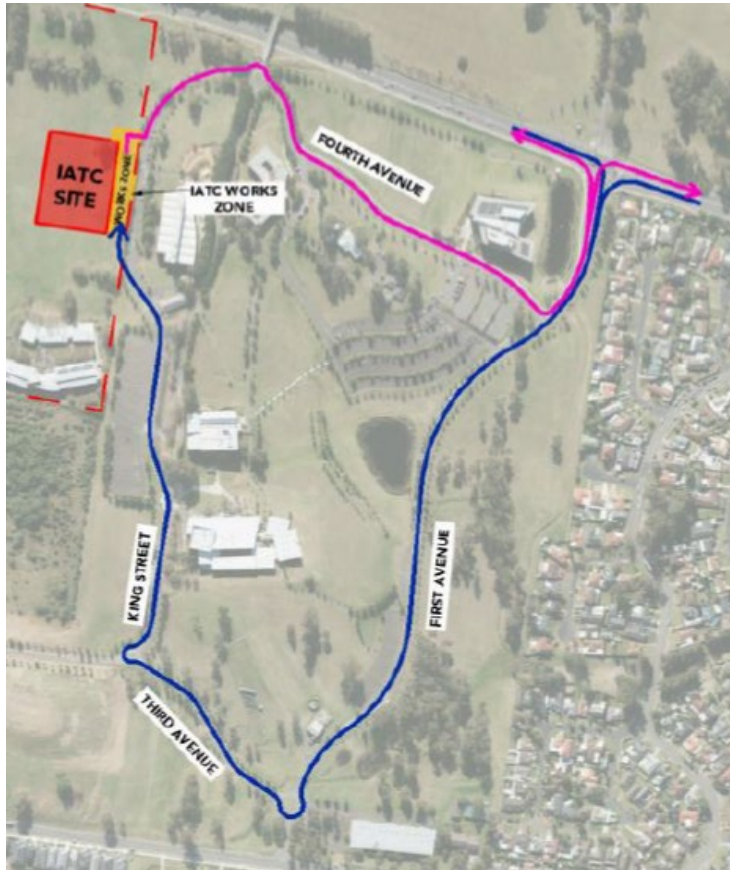
Only required if traffic controllers are present



- 12 x 6m Office – Serial Number 312127110 & 312127108
- 12 x 3m Induction Room – Serial Number 312100481
- 12 x 3m Lunchroom Room – Serial Number 312090247
- 6 x 3m Meeting Room – Serial Number 36090728
- 6 x 3m Lunchroom Room – Serial Number 36101787
- 6 x 3m Changeroom - Serial Number 36178938
- 6 x 3m Changeroom - Serial Number 36088804
- 6 x 3m Male/Female Toilet - Serial Number 36170081

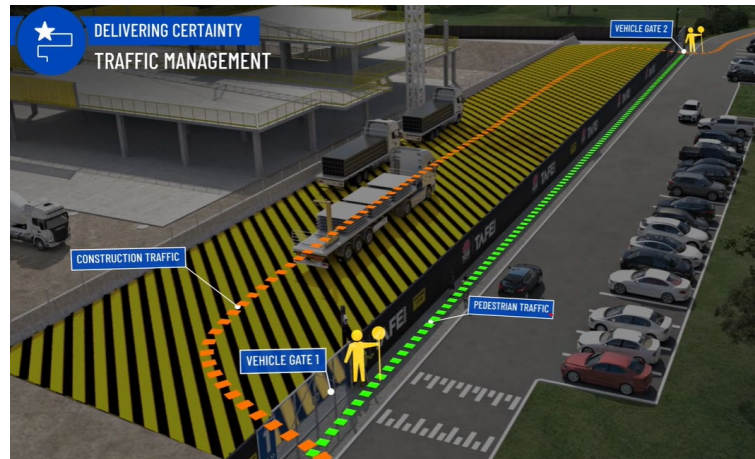
# PROPOSED CONSTRUCTION TRAFFIC ROUTE AND SITE ACCESS

## WESTERN SYDNEY UNIVERSITY WERRINGTON SOUTH



Blue = Construction traffic entry  
Pink = Construction traffic exit

Traffic control will be in place between:  
7am and 6pm Monday-Friday  
8am and 1pm Saturdays



IATC Construction site entry and exit



All construction vehicles will enter and exit the WSU Werrington South Campus in a controlled manner.

All construction vehicle parking will be maintained within the site compound with entry and exit through TAFE NSW Nepean Kingswood Campus.

No WSU parking will be affected due to the construction.