

TAFENSW

IATC WEEKLY CONSTRUCTION STATUS UPDATE

INSTITUTE OF APPLIED TECHNOLOGY
CONSTRUCTION (IATC)

10 December 2021

OUR IATC ROADMAP



IATC Open
For
Business



Q3 2021

Q4 2021

Q1 2022

Q2 2022

Q3 2022

Q4 2022

Q1 2023

**Contractor RTA
and
First Partner
Workshop**

1

Education Model

Education Model agreed by
all partners

3

Marketing Campaign

IATC Marketing Campaign begins ahead
of enrolment period

5

**Operational
Readiness**

Preparation for IAT opening

7

2

**Collaboration Agreements
and Construction**

- Collaboration Agreements signed by Uni & principal industry partner
- Building construction commences

4

Operating Model

- Operating Model developed
- Product development
- Workforce planning
- Op Readiness plan refined

6

**Construction
Complete**

Construction complete and
ready for handover to business

We are here

- Recommendation to award made for building contractor
- First all partner workshop takes place

HIGHLIGHTS AND ACHIEVEMENTS (WE 10/12/21)

- ✓ Site clearing completed
- ✓ Preparation for site accommodation and parking well advanced
- ✓ Site shed accommodation delivery and installation underway
- ✓ Installation of progress tracking cameras
- ✓ Crown Development Verification Certificate 01 submitted and awaiting approval
- ✓ Western Sydney University Traffic Management Plan endorsed
- ✓ Architectural design finalisation continues
- ✓ User group workshops continue



NEXT STEPS (13/12/21-17/12/21)

DECEMBER

- Installation of site accommodation and parking
- Continues
- Installation of noise and vibration control monitors
- Crown Development Verification Certificate 01 approval
- Establish traffic control measures to align with Western Sydney University Traffic Management Plan
- Delivery of Civil machinery
- Civil stormwater works to commence
- Design finalisation continues
- Project website update to be completed



Architectural Image. GrayPuksand Architects

PARKING AND TRAFFIC MOVEMENTS (WC 13/12/21)

Traffic movement through TAFE NSW Nepean – Kingswood Campus and Western Sydney University

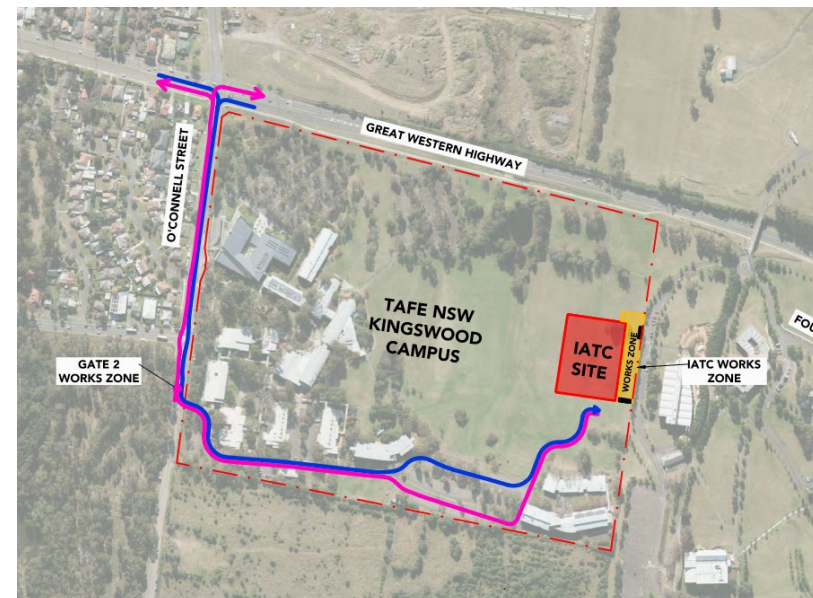
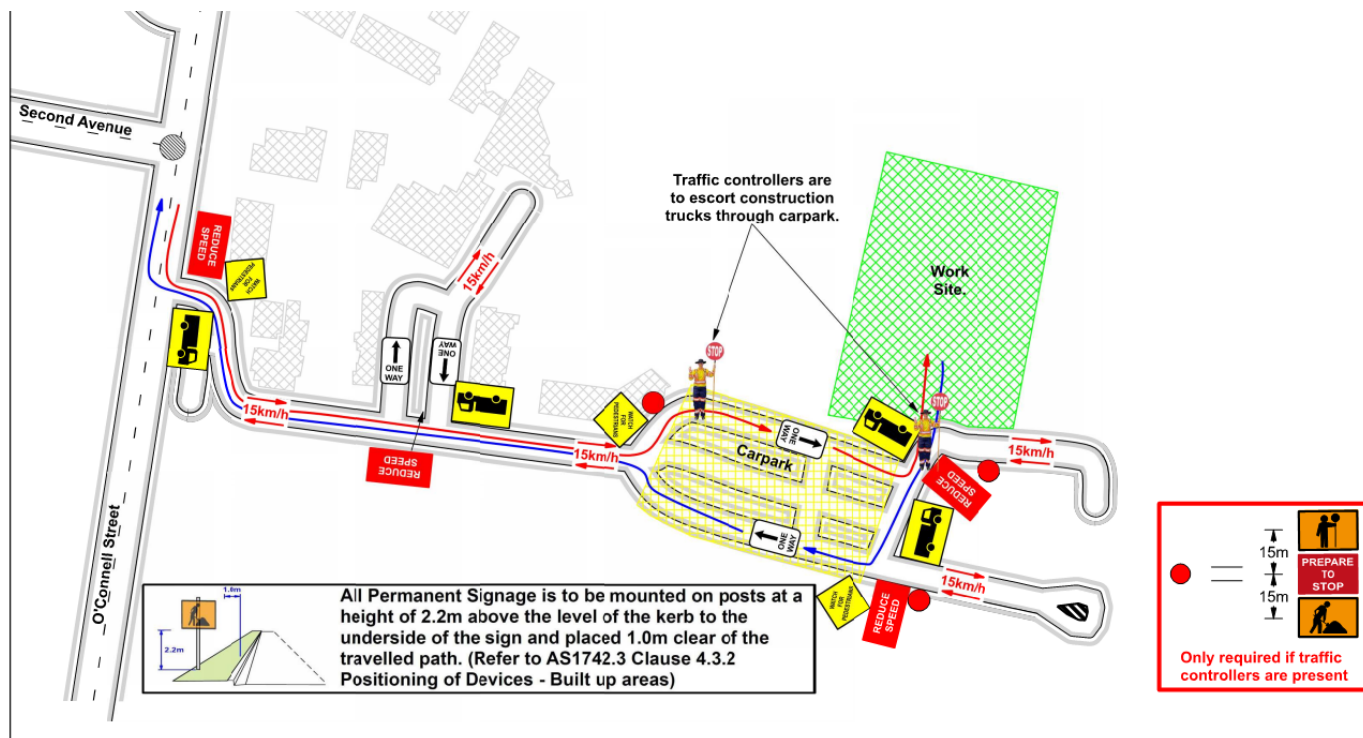
	Monday 13/12/21	Tuesday 14/12/21	Wednesday 15/12/21	Thursday 16/12/21	Friday 17/12/21
6am	5t excavator delivery				
8am					
10am	5 x Truck delivery of imported material and 5 x export of topsoil. Proposed access through WSU - Trucks will be spread across the day and will not be on site all at once, minimising the impact on the road network.	5 x Truck delivery of imported material and 5 x export of topsoil - Proposed access through WSU - Trucks will be spread across the day and will not be on site all at once, minimising the impact on the road network.	5 Trucks and crane (frana) to remove temporary site sheds - Entry and exit through TAFE Gate 2	5 x Truck delivery of imported material and 5 x export of topsoil - Proposed access through WSU - Trucks will be spread across the day and will not be on site all at once, minimising the impact on the road network.	5 x Truck delivery of imported material and 5 x export of topsoil - Proposed access through WSU - Trucks will be spread across the day and will not be on site all at once, minimising the impact on the road network.
12pm					
2pm			5 x Truck delivery of imported material and 5 x export of topsoil - Proposed access through WSU - Trucks will be spread across the day and will not be on site all at once, minimising the impact on the road network.		
4pm					
6pm					

SITE ACCOMODATION DELIVERY (WC 13/12/21)

WEDNESDAY 15/12/21 FROM 7AM – 12 NOON

TAFE NSW Nepean – Kingswood Campus

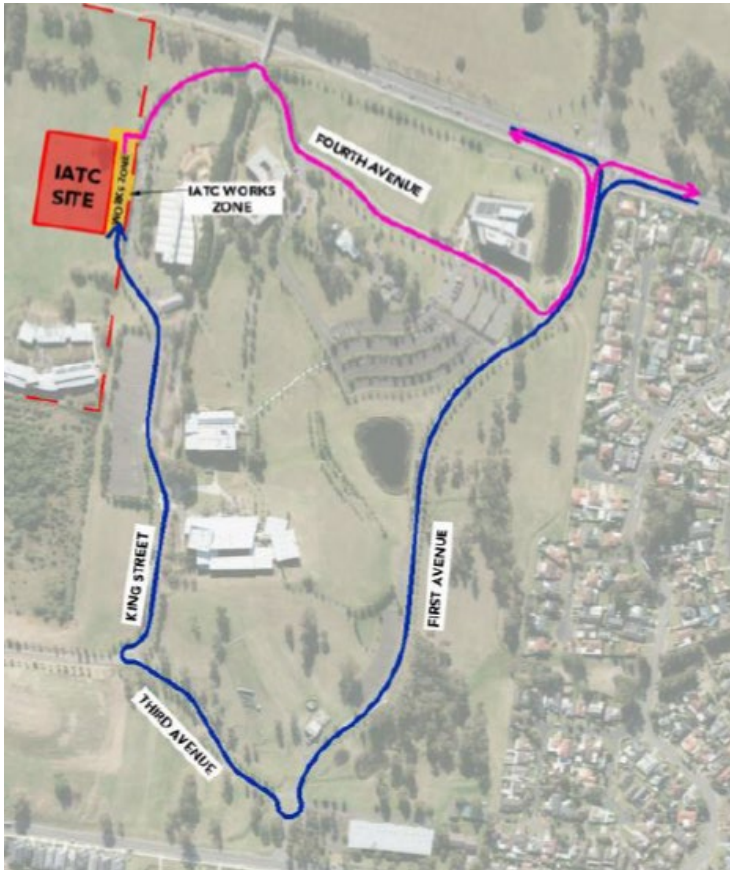
Specific Risk Assessment and Traffic Control Plan



Truck Access Route and Site Plan

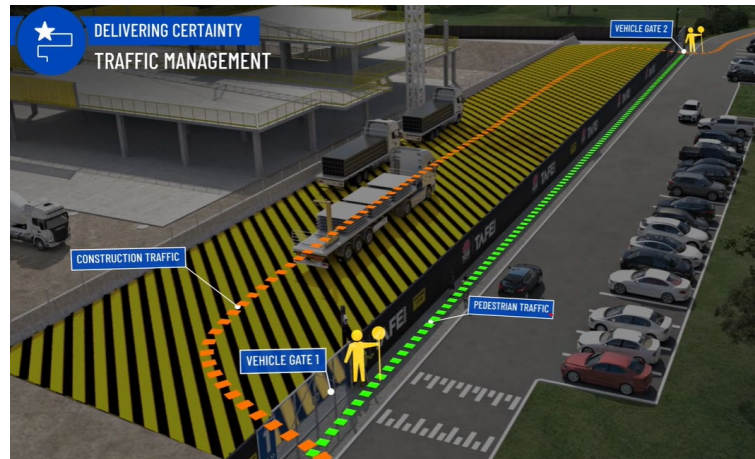
PROPOSED CONSTRUCTION TRAFFIC ROUTE AND SITE ACCESS

WESTERN SYDNEY UNIVERSITY WERRINGTON SOUTH from 13/12/21



Blue = Construction traffic entry
Pink = Construction traffic exit

Traffic control will be in place between:
7am and 6pm Monday-Friday
8am and 1pm Saturdays



IATC Construction site entry and exit



All construction vehicles will enter and exit the WSU Werrington South Campus in a controlled manner.

All construction vehicle parking will be maintained within the site compound with entry and exit through TAFE NSW Nepean Kingswood Campus.

No WSU parking will be affected due to the construction.

KEY CONTACTS

For key project updates and information about the Institute of Applied Technology please visit the project website

- [IATC project website](#)
- Phone: [1800 752 142](tel:1800752142)
- Email: iat@tafensw.edu.au

For all project related questions, concerns or complaints please contact Cameron Lang, TAFE NSW Investment Project Director at cameron.lang2@tafensw.edu.au or 0408 406 919.

For all day to day construction related question please contact:

Pierce Brennan, ADCO Construction Senior Project Manager on 0419 422 566

Paul Gower, ADCO Construction Site Manager on 0413 425 089

Sam Gibson, TAFE NSW Senior Project Manager (Cadence Australia) on 0405 447 099