

TAFENSW

IATC WEEKLY CONSTRUCTION STATUS UPDATE

INSTITUTE OF APPLIED TECHNOLOGY
CONSTRUCTION (IATC)

14 January 2022

OUR IATC ROADMAP



IATC Open
For
Business



Q3 2021

Q4 2021

Q1 2022

Q2 2022

Q3 2022

Q4 2022

Q1 2023

**Contractor RTA
and
First Partner
Workshop**

1

2

**Collaboration Agreements
and Construction**

- Collaboration Agreements signed by Uni & principal industry partner
- Building construction commences

Education Model

Education Model agreed by all partners

3

4

Operating Model

- Operating Model developed
- Product development
- Workforce planning
- Op Readiness plan refined

Marketing Campaign

IATC Marketing Campaign begins ahead of enrolment period

5

6

**Construction
Complete**

Construction complete and ready for handover to business

7

**Operational
Readiness**

Preparation for IAT opening

We are here

HIGHLIGHTS AND ACHIEVEMENTS (WE 14/01/22)

- Contractor site facility establishment and construction access well underway
- Bulk excavation and movement of soil to continue
- Inground services installation to commence
- Preparation and installation of site parking to continue. Anticipated completion date 18/01/22
- Establish construction traffic control measures within Western Sydney University
- Architectural design finalisation to continue
- Crown Development Verification Certificate 02 preparation to continue



Contractor site facility establishment



Construction access establishment

NEXT STEPS (17/01/22-21/01/22)

JANUARY

- Contractor site facility establishment and construction access to continue
- Bulk excavation and movement of soil to continue
- Inground services installation to continue
- Installation of site parking to be completed
- Architectural design finalisation to continue
- Crown Development Verification Certificate 02 preparation to continue



Site photograph 14/01/22

COVID 19 MANAGEMENT PLAN

- COVID 19 controls increased on site
- ADCO and Government Sign in at entry
- SafeWork NSW Management Plans updated
- Awareness signage increased around site
- Scheduled lunchbreak cycles
- Full time cleaning crew
- Limiting unnecessary site visits
- Project Team Resilience Plan in place
- Masks worn indoors

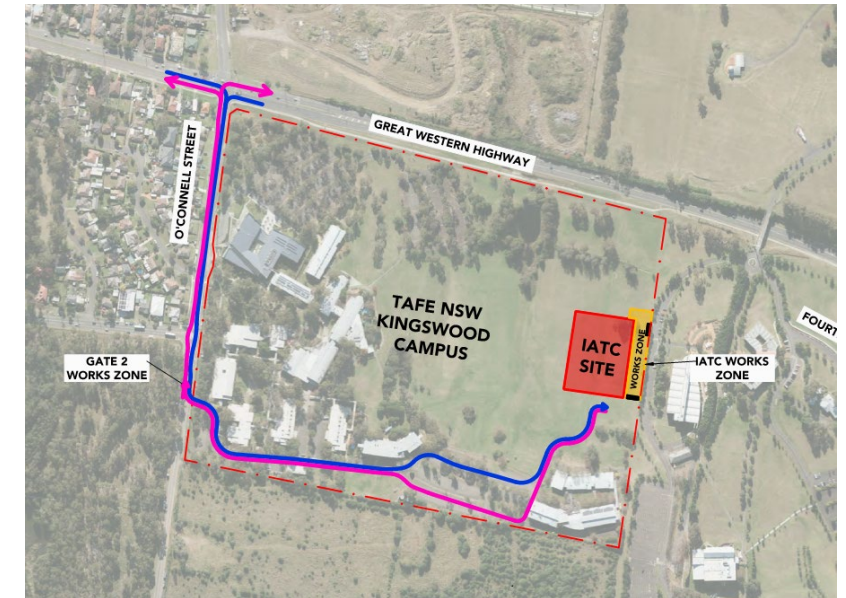


TRAFFIC MOVEMENTS (WC 17/01/22)

Traffic movement through Western Sydney University Werrington South Campus

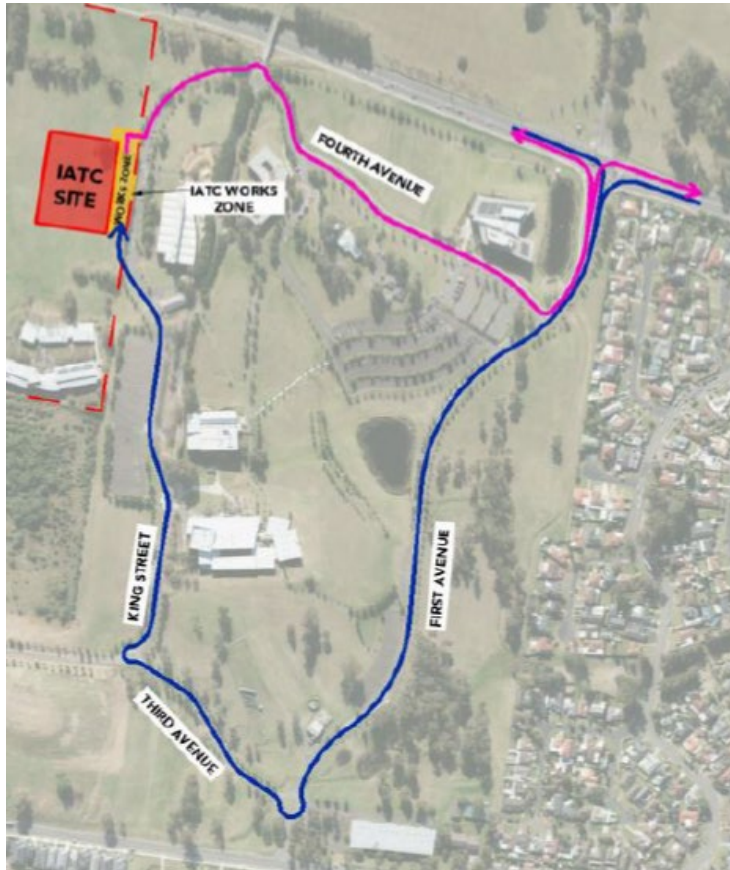
	Monday 17/01/22	Tuesday 18/01/22	Wednesday 19/01/22	Thursday 20/01/22	Friday 21/01/22
6am					
8am	Truck movements to and from the site will be experienced throughout the week. Trucks will be removing the initial top soil gathered from the site. Traffic control will be in place throughout the Western Sydney	Truck movements to and from the site will be experienced throughout the week. Trucks will be removing the initial top soil gathered from the site. Traffic control will be in place throughout the Western Sydney	Truck movements to and from the site will be experienced throughout the week. Trucks will be removing the initial top soil gathered from the site. Traffic control will be in place throughout the Western Sydney	Truck movements to and from the site will be experienced throughout the week. Trucks will be removing the initial top soil gathered from the site. Traffic control will be in place throughout the Western Sydney	Truck movements to and from the site will be experienced throughout the week. Trucks will be removing the initial top soil gathered from the site. Traffic control will be in place throughout the Western Sydney
10am	University campus in line with the approved Traffic Management Plan	University campus in line with the approved Traffic Management Plan	University campus in line with the approved Traffic Management Plan	University campus in line with the approved Traffic Management Plan	University campus in line with the approved Traffic Management Plan.
12pm					
2pm					
4pm					
6pm					

TAFE NSW Nepean - Kingswood Campus Specific Risk Assessment and Traffic Control Plan



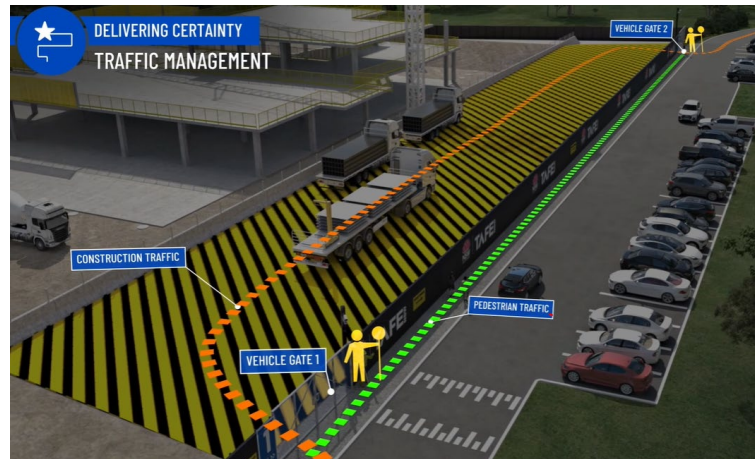
CONSTRUCTION TRAFFIC ROUTE AND SITE ACCESS

WESTERN SYDNEY UNIVERSITY WERRINGTON SOUTH



Blue = Construction traffic entry
Pink = Construction traffic exit

Traffic control will be in place (as required) between:
7am and 6pm Monday-Friday
8am and 1pm Saturdays



IATC Construction site entry and exit



All construction vehicles will enter and exit the WSU Werrington South Campus in a controlled manner.

All construction vehicle parking will be maintained within the site compound with entry and exit through TAFE NSW Nepean Kingswood Campus.

No WSU parking will be affected due to the construction.

KEY CONTACTS

For key project updates and information about the Institute of Applied Technology for Construction please visit the project website at

- [IATC project website](#)
- Phone: [1800 752 142](tel:1800752142)
- Email: iat@tafensw.edu.au

For all project related questions, concerns or complaints please contact:

Cameron Lang, TAFE NSW Investment Project Director at
cameron.lang2@tafensw.edu.au or 0408 406 919.

For all day to day construction related question please contact:

Pierce Brennan, ADCO Construction Senior Project Manager on 0419 422 566

Donald Geale, ADCO Construction Site Manager on 0418 365 052

Mitch Alexander, TAFE NSW Senior Project Manager (Cadence Australia) on 0428 440 555