

**TAFE**NSW

## **IATC WEEKLY CONSTRUCTION STATUS UPDATE**

INSTITUTE OF APPLIED TECHNOLOGY  
**CONSTRUCTION (IATC)**

17 December 2021

# OUR IATC ROADMAP



IATC Open  
For  
Business



Q3 2021

Q4 2021

Q1 2022

Q2 2022

Q3 2022

Q4 2022

Q1 2023

**Contractor RTA  
and  
First Partner  
Workshop**

1

**Education Model**

Education Model agreed by  
all partners

3

**Marketing Campaign**

IATC Marketing Campaign begins ahead  
of enrolment period

5

**Operational  
Readiness**

Preparation for IAT opening

7

2

**Collaboration Agreements  
and Construction**

- Collaboration Agreements signed by Uni & principal industry partner
- Building construction commences

4

**Operating Model**

- Operating Model developed
- Product development
- Workforce planning
- Op Readiness plan refined

6

**Construction  
Complete**

Construction complete and  
ready for handover to business

We are here

- Recommendation to award made for building contractor
- First all partner workshop takes place



## HIGHLIGHTS AND ACHIEVEMENTS (WE 17/12/21)

- ✓ Site clearing completed
- ✓ Staged site accommodation installation completed with Contractor team now based on the site
- ✓ Site progress tracking cameras installed
- ✓ Crown Development Verification Certificate 01 received to allow bulk earthworks to commence
- ✓ Construction site access preparation via Western Sydney University underway
- ✓ Architectural design finalisation continues
- ✓ User group workshops continue



## NEXT STEPS (20/12/21-24/12/21)

### DECEMBER

- Preparation and installation of site parking continues
- Installation of noise and vibration control monitors to be completed
- Establish construction traffic control measures within Western Sydney University
- Delivery of Civil machinery
- Bulk excavation and civil stormwater works to continue
- Design finalisation continues
- Project website updated
- Crown Development Verification Certificate 02 preparation underway

Christmas shutdown period from  
24/12/2021 with works  
recommencing from 10/01/2022



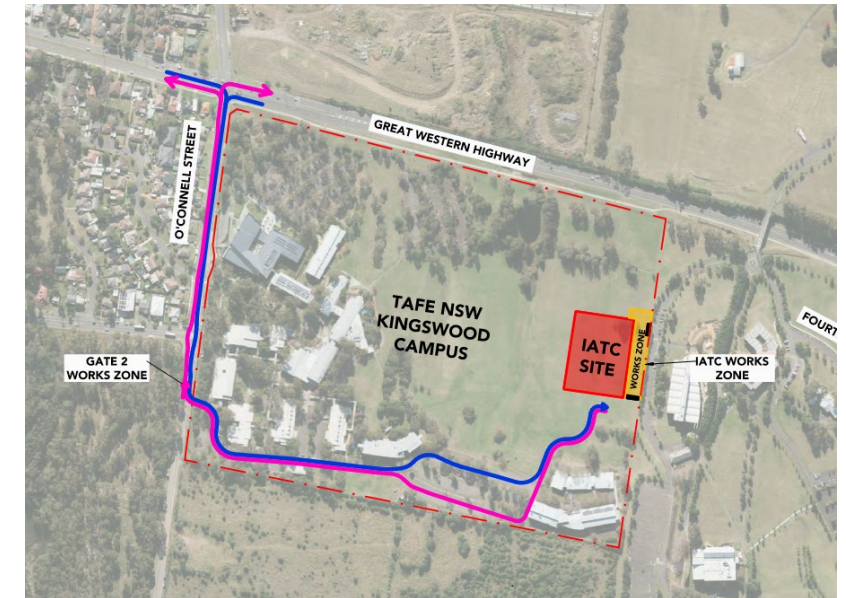
Digital Image. Indicative Bulk Excavation and Piling

# PARKING AND TRAFFIC MOVEMENTS (WC 20/12/21)

Traffic movement through TAFE NSW Nepean - Kingswood Campus and Western Sydney University

	Monday 20/12/21	Tuesday 21/12/21	Wednesday 22/12/21	Thursday 23/12/21	Friday 24/12/21
6am					<b>Christmas Eve No works on site.</b>
8am					
10am	5 x Truck deliveries of imported material and 5 x export of topsoil (weather pending)		5 x Truck deliveries of imported material and 5 x export of topsoil (weather pending)	ADCO Christmas shutdown procedure to ensure all site fencing is secured, erosion and sediment control measures are in place, and all site entry and exit points are secured.	
12pm	Trucks will be spread across the day and will not be on site all at once, minimising the impact on the road network.		Trucks will be spread across the day and will not be on site all at once, minimising the impact on the road network.		
2pm					
4pm					
6pm					

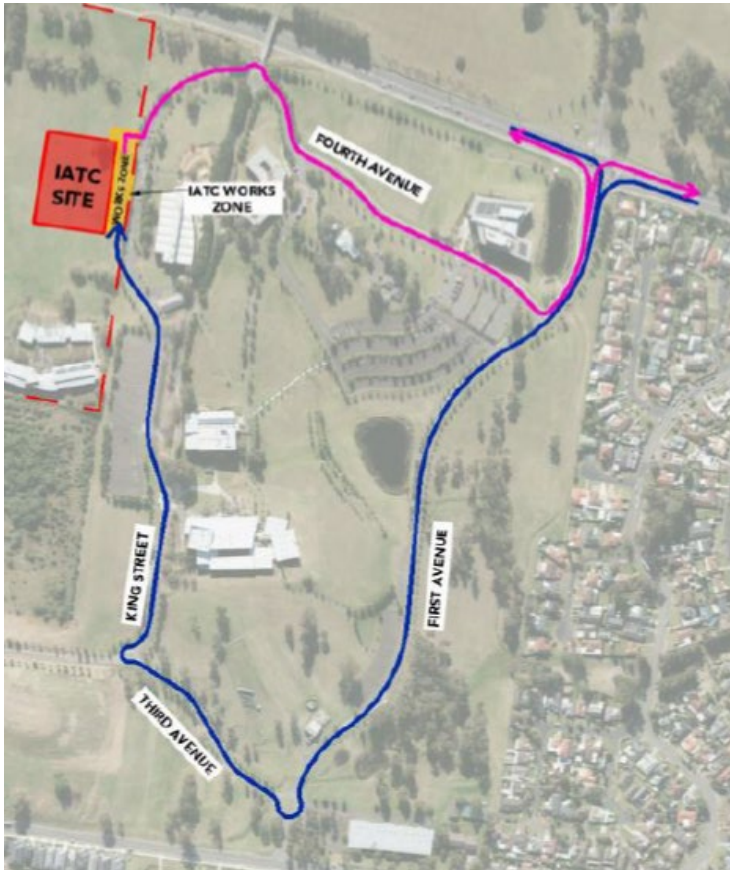
# TAFE NSW Nepean - Kingswood Campus Specific Risk Assessment and Traffic Control Plan





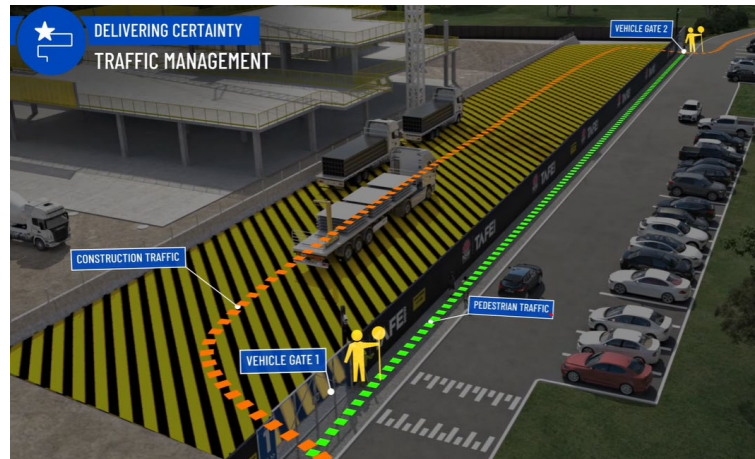
# CONSTRUCTION TRAFFIC ROUTE AND SITE ACCESS

WESTERN SYDNEY UNIVERSITY WERRINGTON SOUTH from 13/12/21



Blue = Construction traffic entry  
Pink = Construction traffic exit

Traffic control will be in place (as required) between:  
7am and 6pm Monday-Friday  
8am and 1pm Saturdays



IATC Construction site entry and exit



All construction vehicles will enter and exit the WSU Werrington South Campus in a controlled manner.

All construction vehicle parking will be maintained within the site compound with entry and exit through TAFE NSW Nepean Kingswood Campus.

No WSU parking will be affected due to the construction.

## KEY CONTACTS

For key project updates and information about the Institute of Applied Technology please visit the project website

- [IATC project website](#)
- Phone: [1800 752 142](tel:1800752142)
- Email: [iat@tafensw.edu.au](mailto:iat@tafensw.edu.au)

**For all project related questions, concerns or complaints please contact:**

Cameron Lang, TAFE NSW Investment Project Director at [cameron.lang2@tafensw.edu.au](mailto:cameron.lang2@tafensw.edu.au) or 0408 406 919.

**For all day to day construction related question please contact:**

Pierce Brennan, ADCO Construction Senior Project Manager on 0419 422 566

Paul Gower, ADCO Construction Site Manager on 0413 425 089

Sam Gibson, TAFE NSW Senior Project Manager (Cadence Australia) on 0405 447 099