

TAFENSW

IATC WEEKLY CONSTRUCTION STATUS UPDATE

INSTITUTE OF APPLIED TECHNOLOGY
CONSTRUCTION (IATC)

21 January 2022

OUR IATC ROADMAP



IATC Open
For
Business



Q3 2021

Q4 2021

Q1 2022

Q2 2022

Q3 2022

Q4 2022

Q1 2023

**Contractor RTA
and
First Partner
Workshop**

1

2

**Collaboration Agreements
and Construction**

- Collaboration Agreements signed by Uni & principal industry partner
- Building construction commences

Education Model

Education Model agreed by all partners

3

4

Operating Model

- Operating Model developed
- Product development
- Workforce planning
- Op Readiness plan refined

Marketing Campaign

IATC Marketing Campaign begins ahead of enrolment period

5

6

Construction Complete

Construction complete and ready for handover to business

Operational Readiness

Preparation for IAT opening

7

We are here

HIGHLIGHTS AND ACHIEVEMENTS (WE 21/01/22)

- Contractor site facility establishment and construction access well underway
- Bulk excavation and movement of soil
- Inground services installation underway
- Preparation and installation of site parking to continue. Anticipated completion date 10/02/22 (delayed due to rain)
- Architectural design finalisation and meetings continued
- Crown Development Verification Certificate 02 preparation continued



Contractor site amenities covered walkways

SITE PHOTOGRAPHS (WE 21/01/22)



NEXT STEPS (24/01/22-28/01/22)

JANUARY

- Contractor site facility establishment and construction access to continue
- Bulk excavation, movement of soil and Inground services installation to continue
- Installation of site parking to be continue
- Architectural design finalisation to continue
- Crown Development Verification Certificate 02 preparation to continue

**Site will be closed on 26 January
(Australia Day)**

**Thursday 27 Jan – Builders
Rostered Day off**

Friday 28 Jan – Builders Picnic

Some ADCO staff will be present on
Friday 28 Jan attending to office
duties only

COVID 19 MANAGEMENT PLAN

- COVID 19 controls increased on site
- ADCO and Government Sign in at entry
- SafeWork NSW Management Plans updated
- Awareness signage increased around site
- Scheduled lunchbreak cycles
- Full time cleaning crew
- Limiting unnecessary site visits
- Project Team Resilience Plan in place
- Masks worn indoors

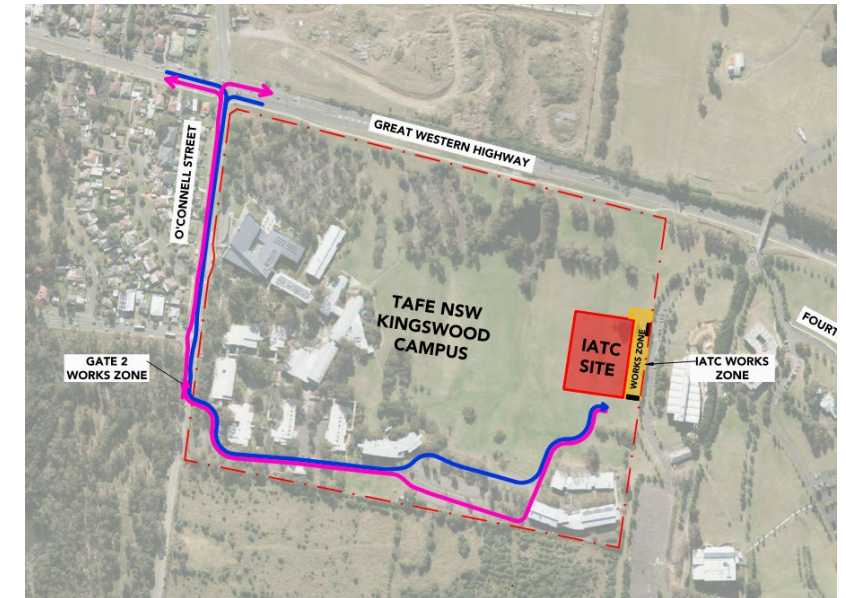


TRAFFIC MOVEMENTS (WC 24/01/22)

Traffic movement through Western Sydney University Werrington South Campus

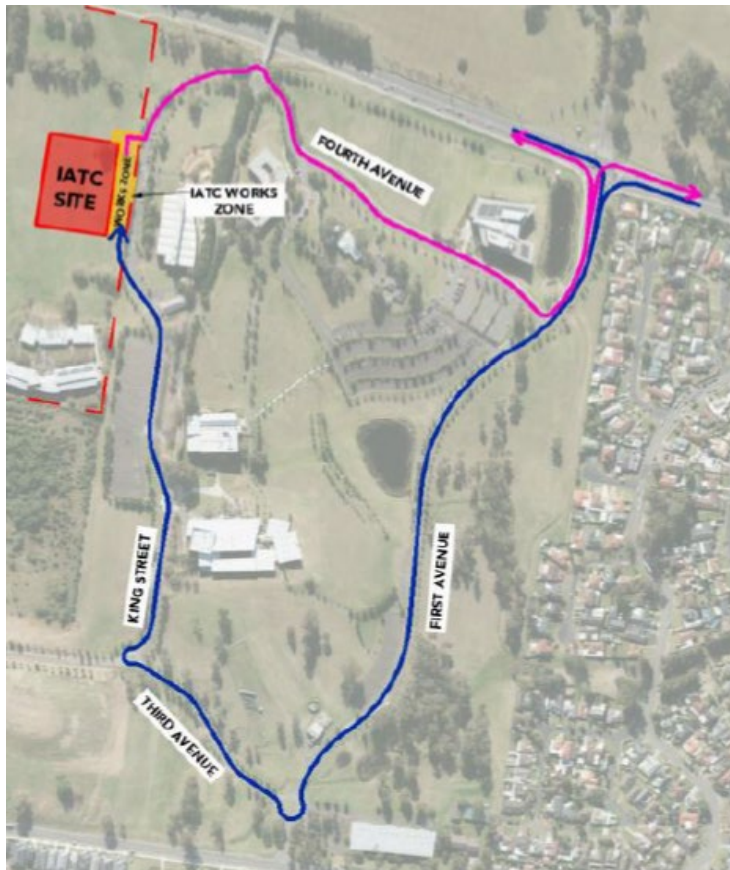
	Monday 24/01/22	Tuesday 25/01/22	Wednesday 26/01/22	Thursday 27/01/22	Friday 28/01/22
6am					
8am	Truck movements to and from the site will be experienced throughout the week. Trucks will be removing the initial top soil gathered from the site.	Truck movements to and from the site will be experienced throughout the week. Trucks will be removing the initial top soil gathered from the site.			
10am					
12pm	Traffic control will be in place throughout the Western Sydney University campus in line with the approved Traffic Management Plan	Traffic control will be in place throughout the Western Sydney University campus in line with the approved Traffic Management Plan	AUSTRALIA DAY	ROSTERED DAY OFF	BUILDERS PICNIC
2pm					
4pm					
6pm					

TAFE NSW Nepean - Kingswood Campus Specific Risk Assessment and Traffic Control Plan



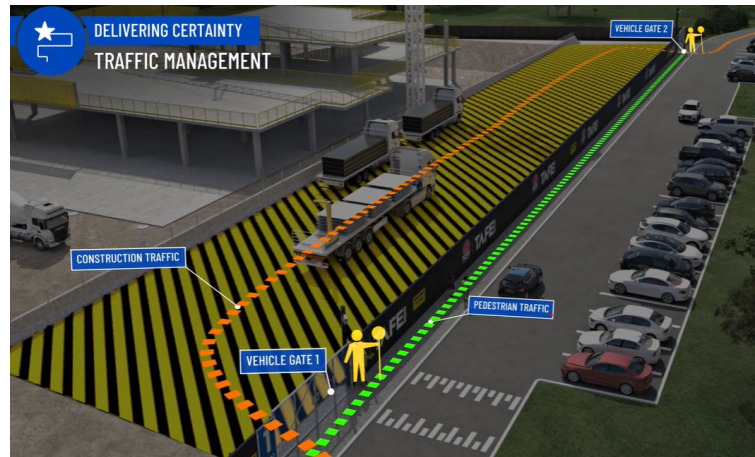
CONSTRUCTION TRAFFIC ROUTE AND SITE ACCESS

WESTERN SYDNEY UNIVERSITY WERRINGTON SOUTH



Blue = Construction traffic entry
Pink = Construction traffic exit

Traffic control will be in place (as required) between:
7am and 6pm Monday-Friday
8am and 1pm Saturdays



IATC Construction site entry and exit



All construction vehicles will enter and exit the WSU Werrington South Campus in a controlled manner.

All construction vehicle parking will be maintained within the site compound with entry and exit through TAFE NSW Nepean Kingswood Campus.

No WSU parking will be affected due to the construction.

KEY CONTACTS

For key project updates and information about the Institute of Applied Technology for Construction please visit the project website at

- [IATC project website](#)
- Phone: [1800 752 142](tel:1800752142)
- Email: iat@tafensw.edu.au

For all project related questions, concerns or complaints please contact:

Cameron Lang, TAFE NSW Investment Project Director at
cameron.lang2@tafensw.edu.au or 0408 406 919.

For all day to day construction related question please contact:

Pierce Brennan, ADCO Construction Senior Project Manager on 0419 422 566

Donald Geale, ADCO Construction Site Manager on 0418 365 052

Mitch Alexander, TAFE NSW Senior Project Manager (Cadence Australia) on 0428 440 555