

**TAFE**NSW

## **IATC WEEKLY CONSTRUCTION STATUS UPDATE**

INSTITUTE OF APPLIED TECHNOLOGY  
**CONSTRUCTION (IATC)**

04 February 2022

# OUR IATC ROADMAP



IATC Open  
For  
Business



Q3 2021

Q4 2021

Q1 2022

Q2 2022

Q3 2022

Q4 2022

Q1 2023

**Contractor RTA  
and  
First Partner  
Workshop**

1

2

**Collaboration Agreements  
and Construction**

- Collaboration Agreements signed by Uni & principal industry partner
- Building construction commences

3

**Education Model**

Education Model agreed by all partners

4

**Operating Model**

- Operating Model developed
- Product development
- Workforce planning
- Op Readiness plan refined

5

**Marketing Campaign**

IATC Marketing Campaign begins ahead of enrolment period

6

**Construction Complete**

Construction complete and ready for handover to business

7

**Operational Readiness**

Preparation for IAT opening

We are here



## HIGHLIGHTS AND ACHIEVEMENTS (WE 04/02/22)

- Contractor site facility establishment and construction access continued and nearing completion
- Piling rig now on site with structural piling commenced
- Inground civil services installation continued
- Preparation and installation of site parking 90% complete. Anticipated completion date 10/02/22
- Architectural design finalisation and meetings continued
- Crown Development Verification Certificate 2.1 preparation nearing completion
- Viewing platform construction continued



Framing for viewing platform



Piling Rig



## SITE PHOTOGRAPHS (WE 04/02/22)





## NEXT STEPS (07/02/22-12/02/22 includes Saturday)

### FEBRUARY

- Contractor site facility establishment to be completed
- Bulk excavation, movement of soil, compaction and Inground civil services installation and structural piling to continue
- Concrete delivery for structural piling
- Installation of site parking and internal road to continue
- Architectural design finalisation to continue
- Crown Development Verification Certificate 2.1 preparation to be finalised



Architectural render

# COVID 19 MANAGEMENT PLAN

- COVID 19 controls increased on site
- ADCO and Government Sign in at entry
- SafeWork NSW Management Plans updated
- Awareness signage increased around site
- Scheduled lunch break cycles
- Full time cleaning crew
- Limiting unnecessary site visits
- Project Team Resilience Plan in place
- Masks worn indoors



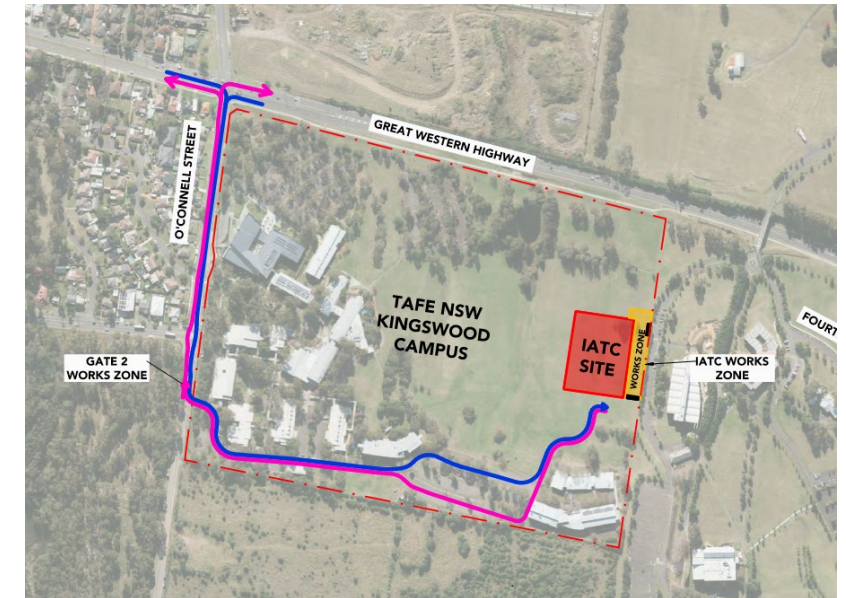
# TRAFFIC MOVEMENTS (WC 07/02/22)

Traffic movement through Western Sydney University Werrington South Campus

	Monday 07/02/22	Tuesday 08/02/22	Wednesday 09/02/22	Thursday 10/02/22	Friday 11/02/22	Saturday 12/02/22 8am - 1pm
7am	Truck movements to and from the site will be experienced throughout the day and managed in line with the approved Construction Traffic Management Plan	Truck movements to and from the site will be experienced throughout the day and managed in line with the approved Construction Traffic Management Plan	Truck movements to and from the site will be experienced throughout the day and managed in line with the approved Construction Traffic Management Plan	Truck movements to and from the site will be experienced throughout the day and managed in line with the approved Construction Traffic Management Plan	Truck movements to and from the site will be experienced throughout the day and managed in line with the approved Construction Traffic Management Plan	Truck movements to and from the site will be experienced throughout the day and managed in line with the approved Construction Traffic Management Plan
8am						
10am						
12pm						
2pm						
4pm	Concrete trucks to arrive between 2-4pm	Concrete trucks to arrive between 2-4pm	Concrete trucks to arrive between 2-4pm	Concrete trucks to arrive between 2-4pm	Concrete trucks to arrive between 2-4pm	
6pm						

\*Note - Drone flying scheduled every Friday 10am

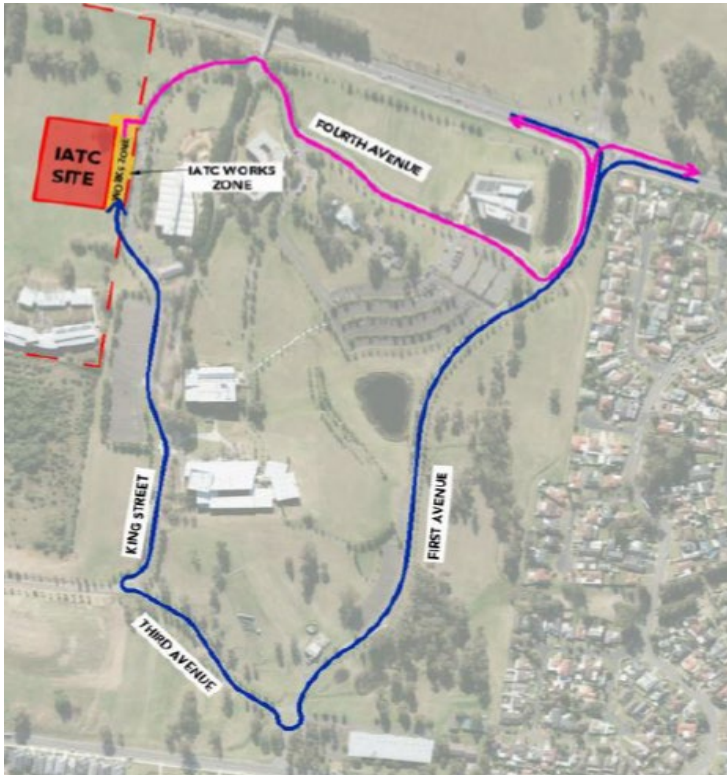
# TAFE NSW Nepean - Kingswood Campus Specific Risk Assessment and Traffic Control Plan





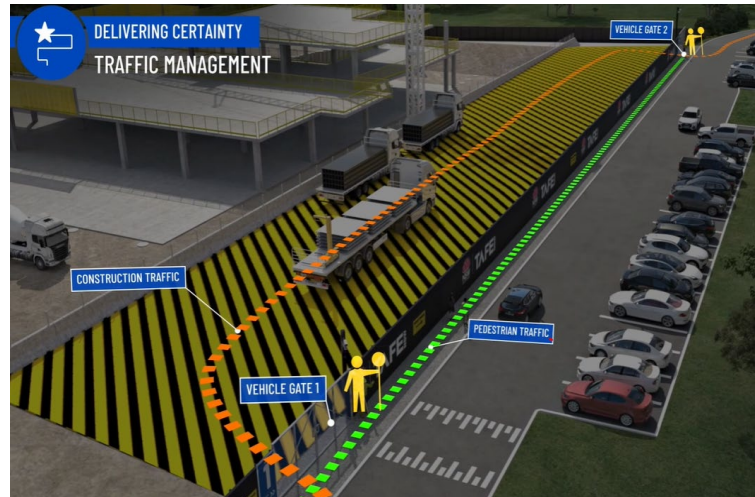
# CONSTRUCTION TRAFFIC ROUTE AND SITE ACCESS

## WESTERN SYDNEY UNIVERSITY WERRINGTON SOUTH



Blue = Construction traffic entry  
Pink = Construction traffic exit

Traffic control will be in place (as required) between:  
7am and 6pm Monday-Friday  
8am and 1pm Saturdays



IATC Construction site entry and exit



All construction vehicles will enter and exit the WSU Werrington South Campus in a controlled manner.

All construction vehicle parking will be maintained within the site compound with entry and exit through TAFE NSW Nepean Kingswood Campus.

No WSU parking will be affected due to the construction.

## KEY CONTACTS

For key project updates and information about the Institute of Applied Technology for Construction please visit the project website at

- [IATC project website](#)
- Phone: [1800 752 142](tel:1800752142)
- Email: [iat@tafensw.edu.au](mailto:iat@tafensw.edu.au)

**For all project related questions, concerns or complaints please contact:**

Cameron Lang, TAFE NSW Investment Project Director at  
[cameron.lang2@tafensw.edu.au](mailto:cameron.lang2@tafensw.edu.au) or 0408 406 919.

**For all day to day construction related question please contact:**

Pierce Brennan, ADCO Construction Senior Project Manager on 0419 422 566

Simon Brown, ADCO Construction Site Manager on 0419 012 704

Mitch Alexander, TAFE NSW Senior Project Manager (Cadence Australia) on 0428 440 555