

TAFENSW

IATC WEEKLY CONSTRUCTION STATUS UPDATE

INSTITUTE OF APPLIED TECHNOLOGY
CONSTRUCTION (IATC)

25 February 2022

OUR IATC ROADMAP



IATC Open
For
Business



Q3 2021

Q4 2021

Q1 2022

Q2 2022

Q3 2022

Q4 2022

Q1 2023

**Contractor RTA
and
First Partner
Workshop**

1

2

**Collaboration Agreements
and Construction**

- Collaboration Agreements signed by Uni & principal industry partner
- Building construction commences

3

Education Model

Education Model agreed by
all partners

4

Operating Model

- Operating Model developed
- Product development
- Workforce planning
- Op Readiness plan refined

5

Marketing Campaign

IATC Marketing Campaign begins ahead
of enrolment period

6

**Construction
Complete**

Construction complete and
ready for handover to business

7

**Operational
Readiness**

Preparation for IAT opening

We are here

HIGHLIGHTS AND ACHIEVEMENTS (WE 26/02/22)

- Site progress impacted by inclement (wet) weather throughout the week.
- Contractor site facility establishment and construction access paused due to inclement weather.
- Piling and pile caps paused due to inclement weather
- Inground civil services installation paused due to inclement weather.
- Architectural design finalisation, user group workshops and stakeholder meetings continued.
- Viewing platform construction paused due to inclement weather.



Site photograph

SITE PHOTOGRAPHS (WE 26/02/22)



Arial Drone Photograph



Site photograph



Site photograph

NEXT STEPS (28/02/22-05/03/22 includes Saturday)

FEBRUARY/MARCH

- Contractor site facility and carpark to be completed.
- Excavation, movement of soil, compaction, Inground civil services, structural piling and pile caps to continue.
- Viewing platform construction to continue. Anticipated completion in early March.
- Architectural design finalisation, user group workshops and stakeholder meetings to continue.
- Crown Development Verification Certificate 2.2 preparation to continue.



Arial drone photograph

COVID 19 MANAGEMENT PLAN

- COVID 19 controls maintained on site
- ADCO and Government Sign in at entry
- SafeWork NSW Management Plans updated
- Awareness signage increased around site
- Scheduled lunch break cycles
- Full time cleaning crew
- Limiting unnecessary site visits
- Project Team Resilience Plan in place



TRAFFIC MOVEMENTS (WC 28/02/22)

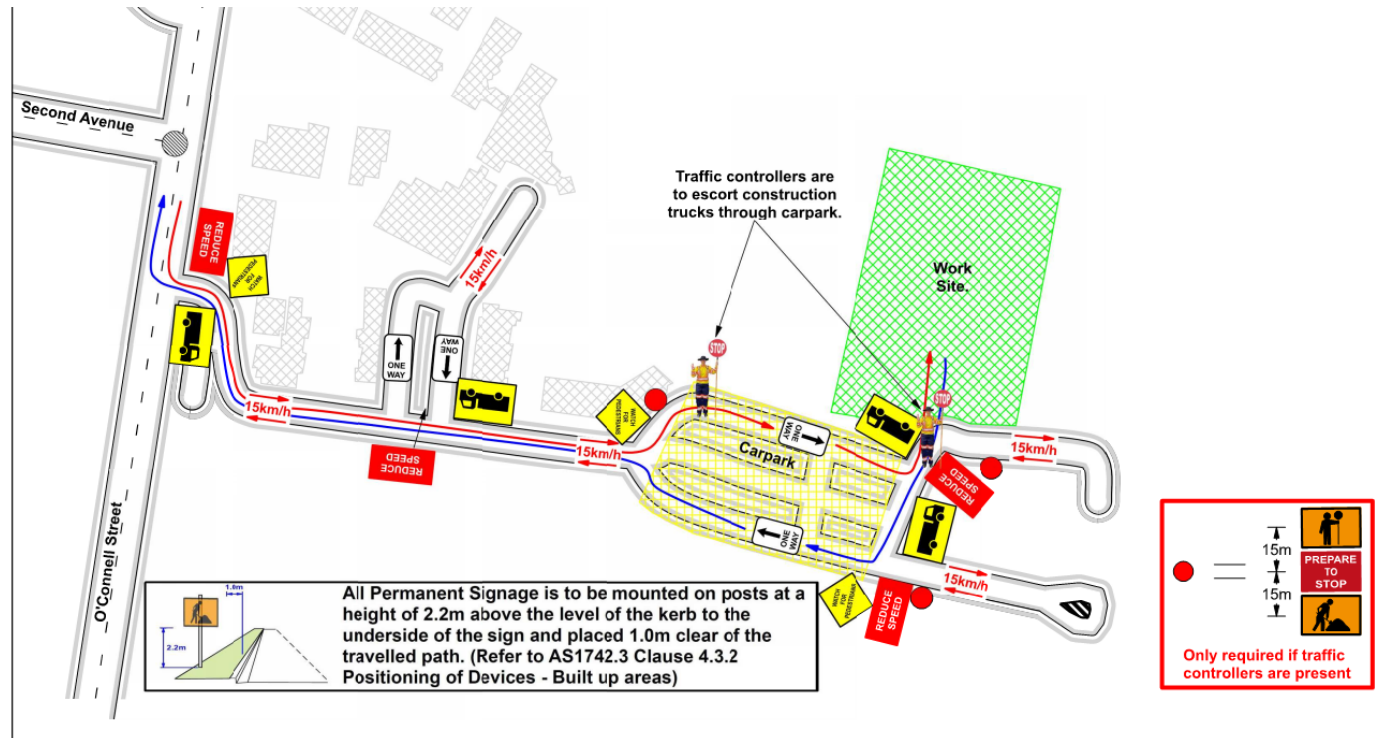
Traffic movement through Western Sydney University Werrington South Campus

	Monday 28/02/22	Tuesday 01/03/22	Wednesday 02/03/22	Thursday 03/03/22	Friday 04/03/22	Saturday 05/03/22 8am - 1pm
7am	Truck movements to and from the site will be experienced throughout the day and managed in line with the approved Construction Traffic Management Plan	Truck movements to and from the site will be experienced throughout the day and managed in line with the approved Construction Traffic Management Plan	Truck movements to and from the site will be experienced throughout the day and managed in line with the approved Construction Traffic Management Plan	Truck movements to and from the site will be experienced throughout the day and managed in line with the approved Construction Traffic Management Plan	Truck movements to and from the site will be experienced throughout the day and managed in line with the approved Construction Traffic Management Plan	Truck movements to and from the site will be experienced throughout the day and managed in line with the approved Construction Traffic Management Plan
8am						
10am						
12pm						
2pm						
4pm	Concrete trucks and other larger trucks to arrive between 7am and 5pm	Concrete trucks and other larger trucks to arrive between 7am and 5pm	Concrete trucks and other larger trucks to arrive between 7am and 5pm	Concrete trucks and other larger trucks to arrive between 7am and 5pm	Concrete trucks and other larger trucks to arrive between 7am and 5pm	Concrete trucks and other larger trucks to arrive between 8am and 1pm
6pm						

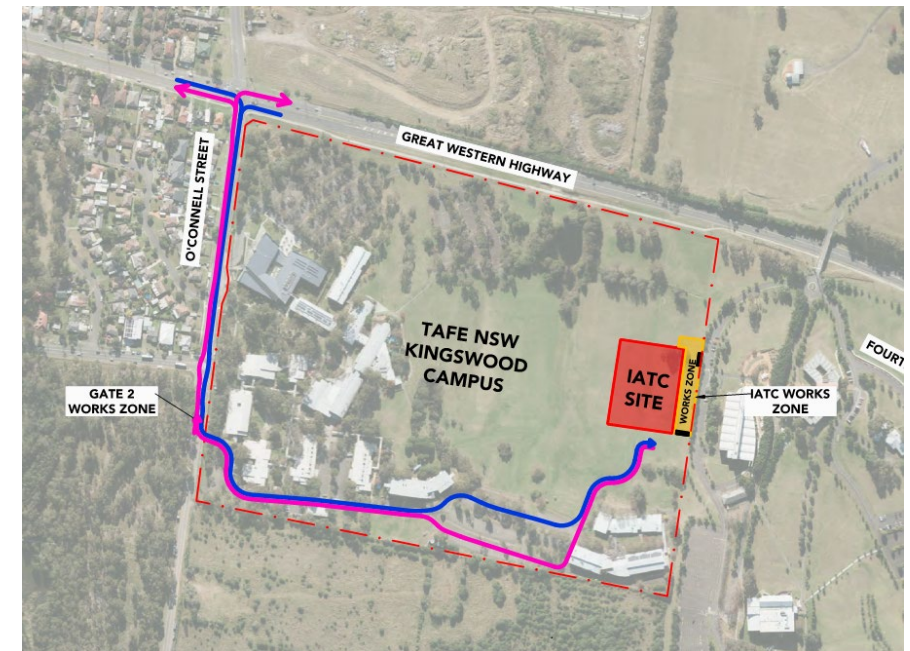
*Note - Drone flying scheduled every Thursday from 10am

TAFE NSW NEPEAN – KINGSWOOD CAMPUS TRAFFIC PLAN

TAFE NSW Nepean - Kingswood Campus Specific Risk Assessment and Traffic Control Plan



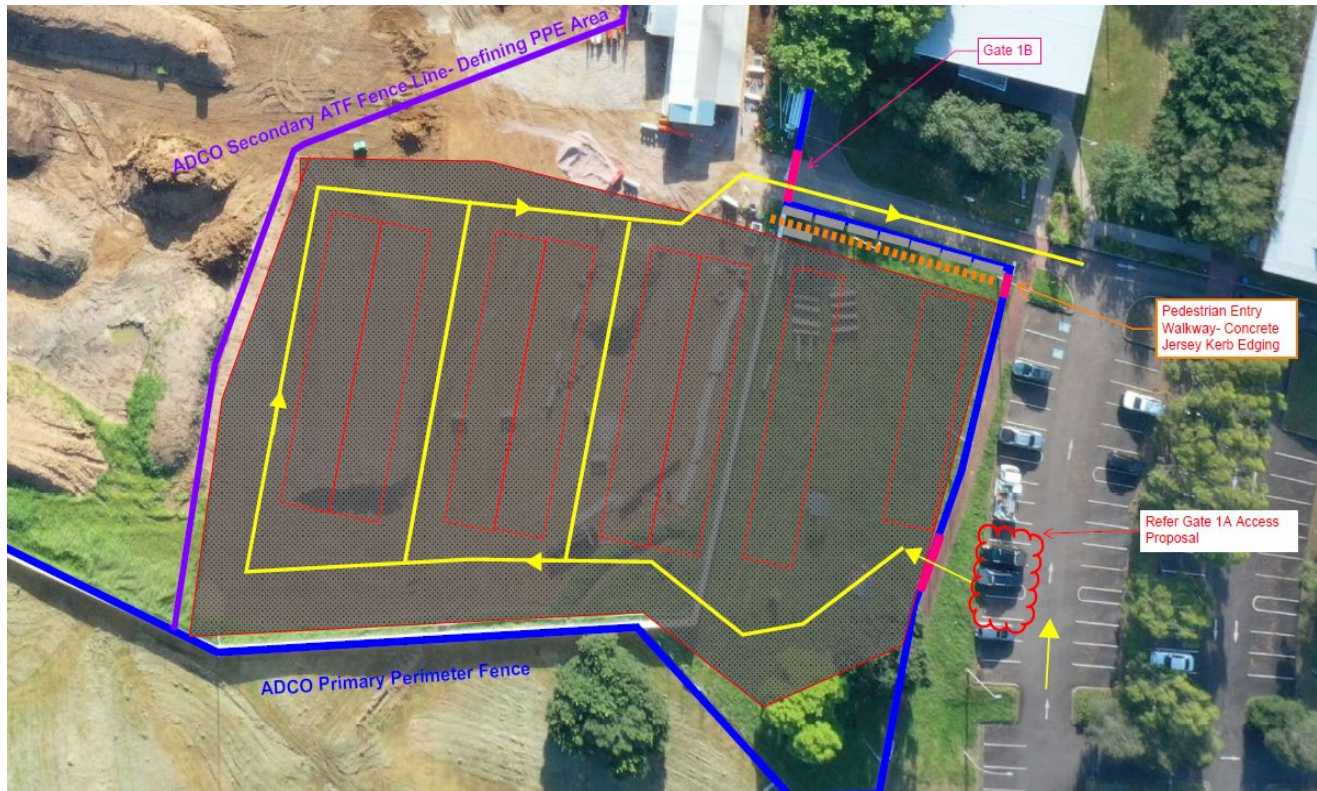
*Note: Only lightweight construction worker vehicles will go through TAFE Gate 2 during the week of the 28/02/22.



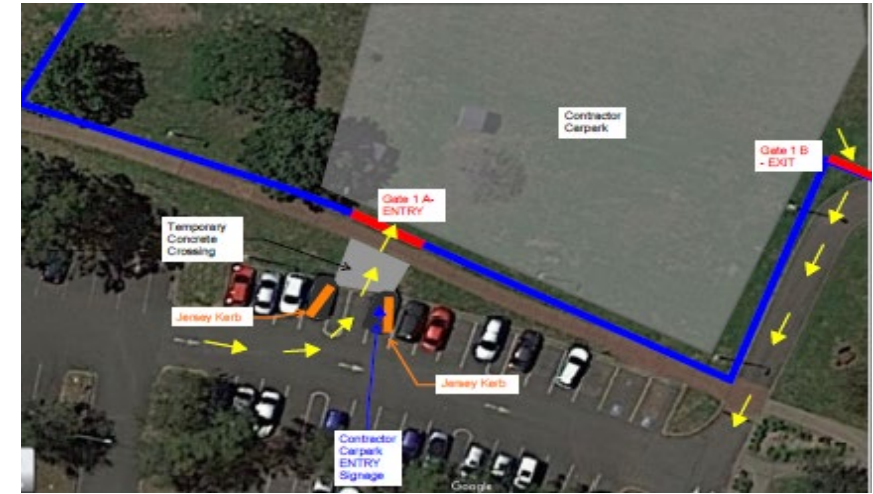
Truck Access Route and Site Plan

TAFE NSW NEPEAN - KINGSWOOD CAMPUS

NEW CONTRACTOR ON-SITE PARKING



Entry via existing carpark



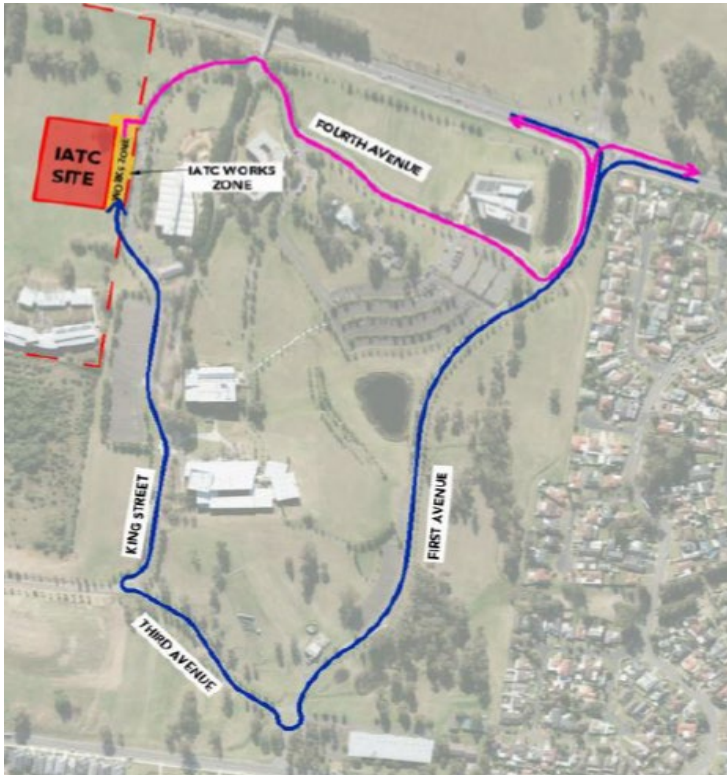
Entry via existing carpark



Entry via existing access road.

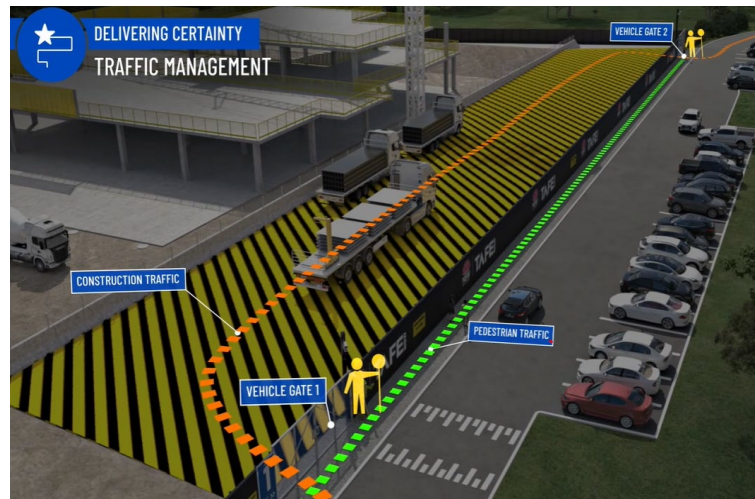
CONSTRUCTION TRAFFIC ROUTE AND SITE ACCESS

WESTERN SYDNEY UNIVERSITY WERRINGTON SOUTH



Blue = Construction traffic entry
Pink = Construction traffic exit

Traffic control will be in place (as required) between:
7am and 6pm Monday-Friday
8am and 1pm Saturdays



IATC Construction site entry and exit



All construction vehicles will enter and exit the WSU Werrington South Campus in a controlled manner.

All construction vehicle parking will be maintained within the site compound with entry and exit through TAFE NSW Nepean Kingswood Campus.

No WSU parking will be affected due to the construction.

KEY CONTACTS

For key project updates and information about the Institute of Applied Technology for Construction please visit the project website at

- [IATC project website](#)
- Phone: [1800 752 142](tel:1800752142)
- Email: iat@tafensw.edu.au

For all project related questions, concerns or complaints please contact:

Cameron Lang, TAFE NSW Investment Project Director at
cameron.lang2@tafensw.edu.au or 0408 406 919.

For all day to day construction related question please contact:

Pierce Brennan, ADCO Construction Senior Project Manager on 0419 422 566

Simon Brown, ADCO Construction Site Manager on 0419 012 704

Mitch Alexander, TAFE NSW Senior Project Manager (Cadence Australia) on 0428 440 555