

TAFENSW

IATC WEEKLY CONSTRUCTION STATUS UPDATE

INSTITUTE OF APPLIED TECHNOLOGY
CONSTRUCTION (IATC)

08 April 2022

OUR IATC ROADMAP



IATC Open
For
Business



Q3 2021

Q4 2021

Q1 2022

Q2 2022

Q3 2022

Q4 2022

Q1 2023

**Contractor RTA
and
First Partner
Workshop**

1

2

**Collaboration Agreements
and Construction**

- Collaboration Agreements signed by Uni & principal industry partner
- Building construction commences

3

Education Model
Education Model agreed by
all partners

4

Operating Model

- Operating Model developed
- Product development
- Workforce planning
- Op Readiness plan refined

5

Marketing Campaign
IATC Marketing Campaign begins ahead
of enrolment period

6

**Construction
Complete**

Construction complete and
ready for handover to business

7

**Operational
Readiness**
Preparation for IAT opening

We are here

HIGHLIGHTS AND ACHIEVEMENTS (WE 09/04/22)

- Wet weather site recovery continued
- Piles and pile caps continued
- Formwork to stair 01 walls
- Poured 45m³ of concrete to Atrium stair footings
- Bulk excavation to northern retaining wall
- Finalisation of equipment lists
- Crown Development Verification Certificate 2.2 completed and awaiting approval



Stair Core No.1 steel and formwork



Bulk excavation to Northern retaining wall

SITE PHOTOGRAPHS (WE 09/04/22)



Aerial Drone Photograph



Atrium bleacher stair footings



Atrium bleacher stair architectural image

NEXT STEPS (11/04 – 16/04/22)

APRIL

- Continue wet weather recovery
- Continue piling
- Continue formwork and steel reinforcements for lower ground floor columns, lift cores and slab. Major concrete pour targeted 14/04/2022 (weather pending)
- Finalise equipment lists
- *Note: Good Friday 15/04/2022



Central Atrium – Architectural Render

COVID 19 MANAGEMENT PLAN

- COVID 19 controls maintained on site
- ADCO and Government Sign in at entry
- SafeWork NSW Management Plans updated
- Awareness signage increased around site
- Scheduled lunch break cycles
- Full time cleaning crew
- Limiting unnecessary site visits
- Project Team Resilience Plan in place

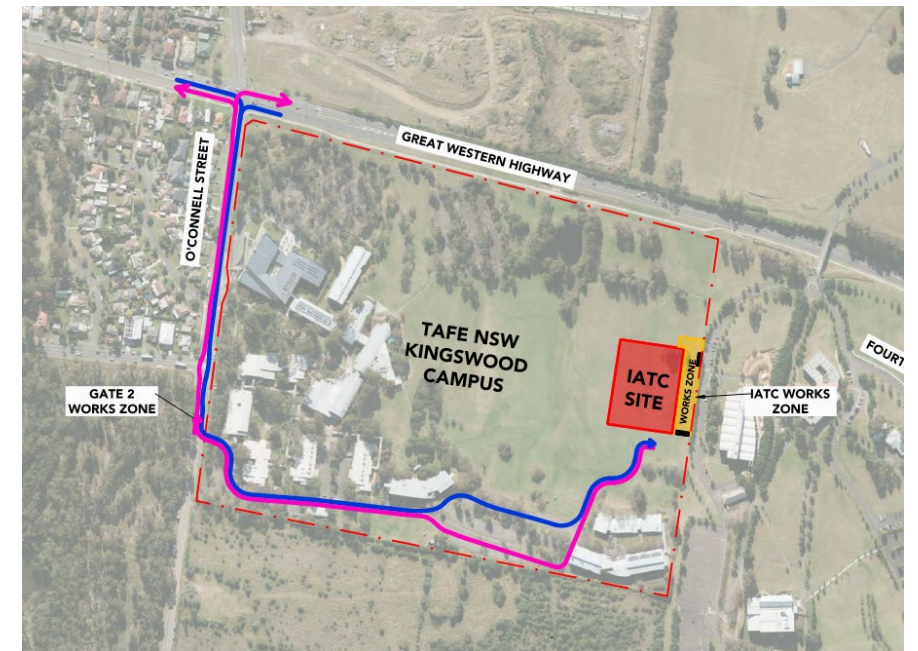


TRAFFIC MOVEMENTS (WC 11/04/22)

Traffic movement through Western Sydney University Werrington South Campus

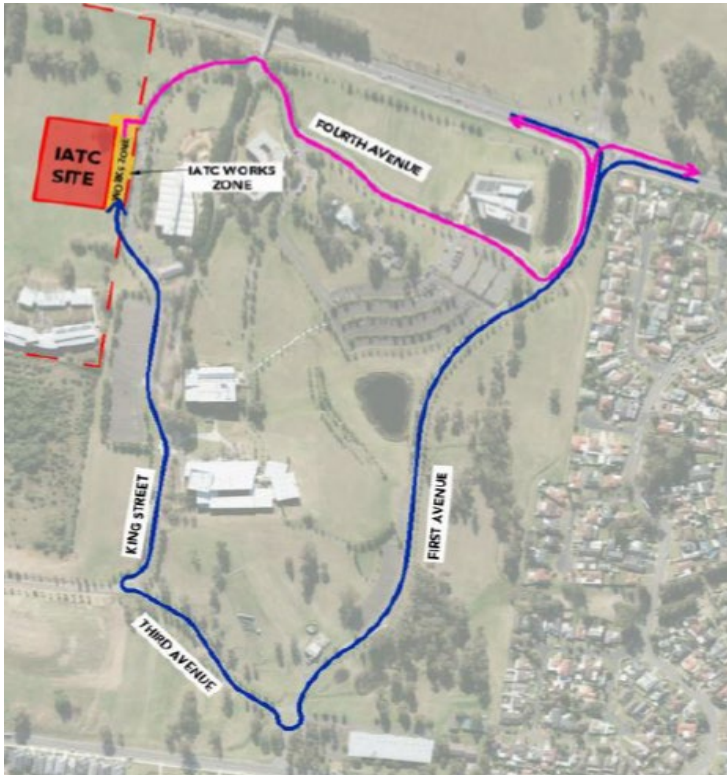
	Monday 11/04/2022	Tuesday 12/04/2022	Wednesday 13/04/2022	Thursday 14/04/2022	Friday 15/04/2022	Saturday 16/04/2022
Description of Work Activities	Formwork, Inground Services, Reo Fixing, Piling, Preparation works for Concrete Pour 14/04/22	Formwork, Inground Services, Reo Fixing, Piling, Preparation works for Concrete Pour 14/04/23	Formwork, Inground Services, Reo Fixing, Piling, Preparation works for Concrete Pour 14/04/24	Formwork, Inground Services, Reo Fixing, Piling, Targeting Concrete Pour (Weather Permitting)	GOOD FRIDAY	EASTER SATURDAY
Traffic Control	Nil Required	Nil Required	Nil Required	Traffic Control in Place	Nil Required	Nil Required
07.00am						
08.00am						
09.00am						
10.00am	Minimal Light Deliveries throughout the day. Nil Traffic Control Required in Place	Minimal Light Deliveries throughout the day. Nil Traffic Control Required in Place	Minimal Light Deliveries throughout the day. Nil Traffic Control Required in Place	Concrete trucks on turn around 7am to 2.00pm		
11.00am						
12.00pm						
01.00pm						
02.00pm						
03.00pm						
04.00pm	Concrete Pour to Piles. 3 x Concrete Trucks	Concrete Pour to Piles. 3 x Concrete Trucks	Concrete Pour to Piles. 3 x Concrete Trucks	Concrete Pour to Piles. 3 x Concrete Trucks		
05.00pm						

TAFE NSW Nepean - Kingswood Campus Specific Risk Assessment and Traffic Control Plan



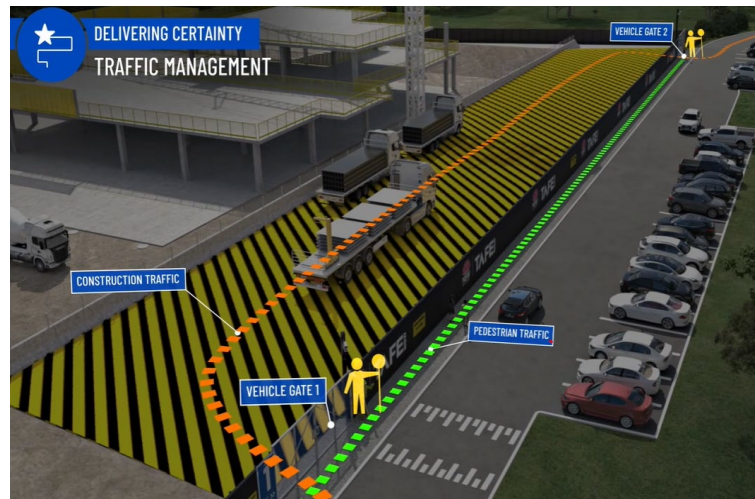
CONSTRUCTION TRAFFIC ROUTE AND SITE ACCESS

WESTERN SYDNEY UNIVERSITY WERRINGTON SOUTH



Blue = Construction traffic entry
Pink = Construction traffic exit

Traffic control will be in place (as required) between:
7am and 6pm Monday-Friday
8am and 1pm Saturdays



IATC Construction site entry and exit



All construction vehicles will enter and exit the WSU Werrington South Campus in a controlled manner.

All construction vehicle parking will be maintained within the site compound with entry and exit through TAFE NSW Nepean Kingswood Campus.

No WSU parking will be affected due to the construction.

KEY CONTACTS

For key project updates and information about the Institute of Applied Technology for Construction please visit the project website at

- [IATC project website](#)
- Phone: [1800 752 142](tel:1800752142)
- Email: iat@tafensw.edu.au

For all project related questions, concerns or complaints please contact:

Cameron Lang, TAFE NSW Investment Project Director at
cameron.lang2@tafensw.edu.au or 0408 406 919.

For all day to day construction related question please contact:

Pierce Brennan, ADCO Construction Senior Project Manager on 0419 422 566

Simon Brown, ADCO Construction Site Manager on 0419 012 704

Mitch Alexander, TAFE NSW Senior Project Manager (Cadence Australia) on 0428 440 555