

TAFENSW

IATC WEEKLY CONSTRUCTION STATUS UPDATE

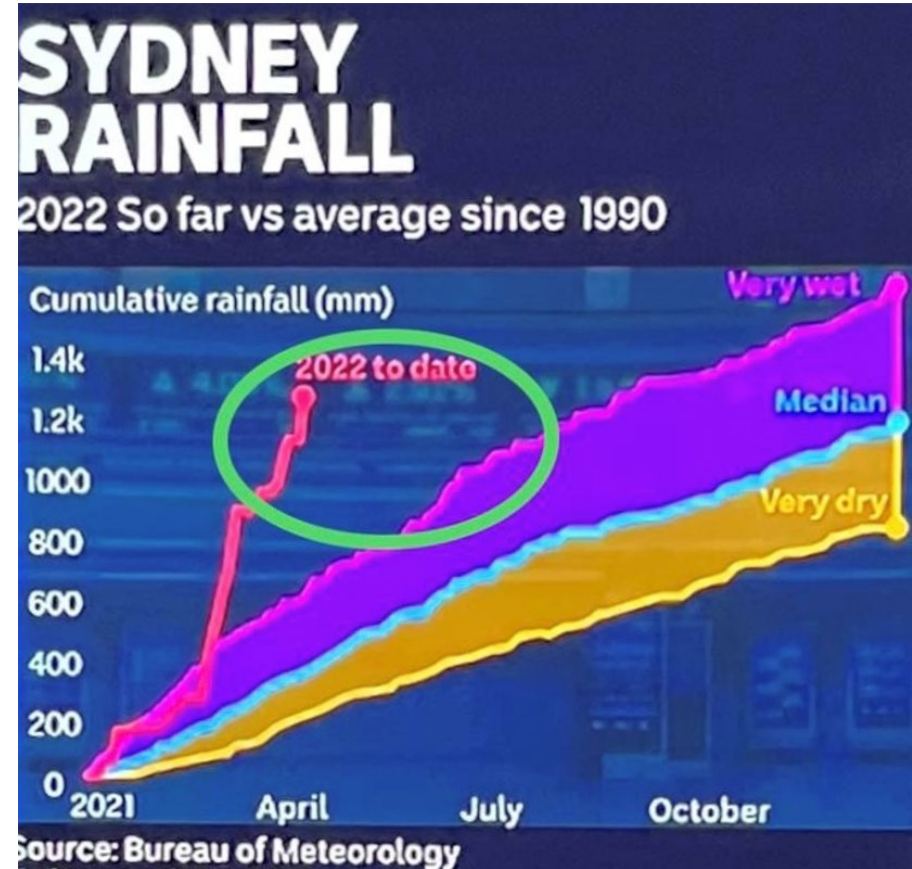
INSTITUTE OF APPLIED TECHNOLOGY
CONSTRUCTION (IATC)

22 April 2022

CONTINUED WET WEATHER

Wet weather continues to challenge the inground civil and structural foundation works. Sydney has received some intense rainfall over the past few months, placing immense pressure on not only the construction works, but the workers responsible to deliver the works. It is hard enough to do detailed works once, but when you are continually having to revisit your works, time and time again, it can become quite frustrating and morale gets low.

I commend the contractor (ADCO Constructions) staff, subcontractors, consultants and supplier for their continued effort to keep this project afloat. We hope for some good weather to assist them in coming out of the ground.



Weather records

OUR IATC ROADMAP



IATC Open
For
Business



Q3 2021

Q4 2021

Q1 2022

Q2 2022

Q3 2022

Q4 2022

Q1 2023

**Contractor RTA
and
First Partner
Workshop**

1

2

**Collaboration Agreements
and Construction**

- Collaboration Agreements signed by Uni & principal industry partner
- Building construction commences

Education Model
Education Model agreed by
all partners

3

4

Operating Model

- Operating Model developed
- Product development
- Workforce planning
- Op Readiness plan refined

Marketing Campaign

IATC Marketing Campaign begins ahead
of enrolment period

5

6

**Construction
Complete**

Construction complete and
ready for handover to business

**Operational
Readiness**

Preparation for IAT opening

7

We are here

HIGHLIGHTS AND ACHIEVEMENTS (WE 23/04/22)

- Continued rain affected progress on site this week
- Wet weather site recovery continued
- Piles and pile caps, formwork and steel reinforcements for lower ground floor columns, lift cores and slab continued when possible between rain events
- Installation of agricultural lines, drainage cell and waterproofing continued when possible between rain events
- Service trenching works from Gate 2 continued when possible between rain events
- Internal and external finishes presented to the project team (photos in next weeks update)



Lower ground floor form work edge boards

SITE PHOTOGRAPHS (WE 23/04/22)



Aerial Drone Photograph



Detailed excavation of capping beam to Northern shoring wall



Continued formwork to Atrium bleacher stairs

NEXT STEPS (25/04 – 30/04/22)

APRIL

- Site closed ANZAC Day (25/04/2022)
- Long Weekend Rostered Day Off (RDO) – Site open for Contracting staff. Some material deliveries may occur
- Continue wet weather recovery as required
- Continue piling
- Continue formwork and steel reinforcements for lower ground floor columns, lift cores and slab. Concrete pour timing to be assessed after the long weekend (site conditions and weather pending)



Lower ground level to upper ground level perspective. Overall building height to be similar to the WSU building in the back drop

COVID 19 MANAGEMENT PLAN

- COVID 19 controls maintained on site
- ADCO and Government Sign in at entry
- SafeWork NSW Management Plans updated
- Awareness signage increased around site
- Scheduled lunch break cycles
- Full time cleaning crew
- Limiting unnecessary site visits
- Project Team Resilience Plan in place



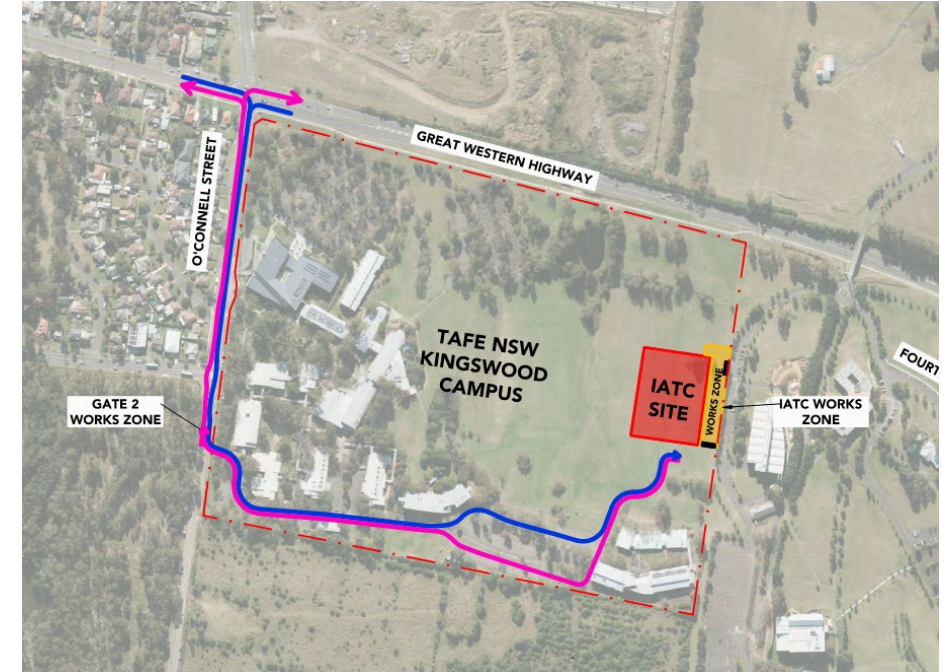
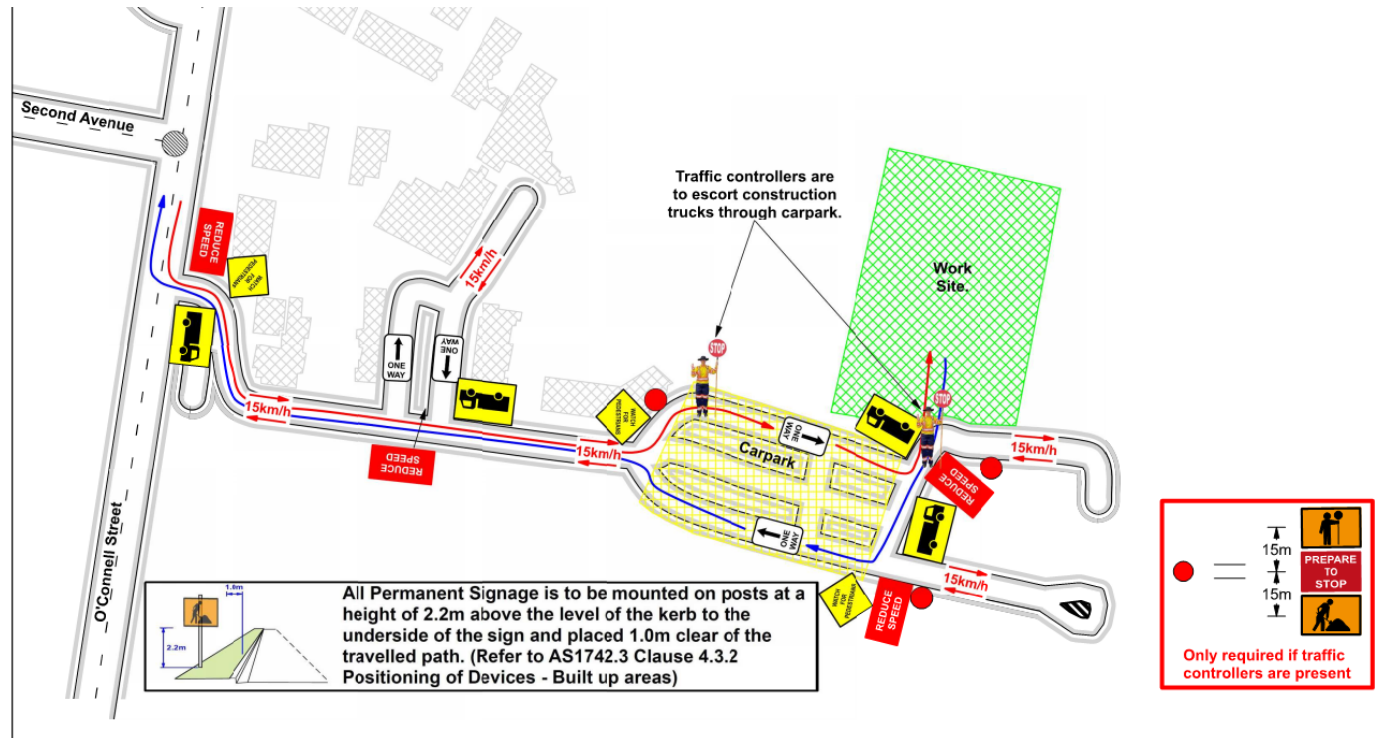
TRAFFIC MOVEMENTS (WC 25/04/22)

Traffic movement through Western Sydney University Werrington South Campus

	Monday 25/04/2022	Tuesday 26/04/2022	Wednesday 27/04/2022	Thursday 28/04/2022	Friday 29/04/2022	Saturday 30/04/2022
Description of Work Activities	ANZAC LONG WEEKEND	ANZAC LONG WEEKEND ROSTERED DAY OFF (RDO)	Plastic, pest control, joints and edgeboards for lower ground floor slab (weather pending)	Continuation of plastic, pest control, joints and edgeboards for lower ground floor slab (weather pending)	Fixing of steel reinforcement and formwork	Concrete pour No.1
Standing Traffic Control	Nil required	Nil required	Nil Required	Nil Required	Nil Required	Required
07.00am	No work activity on site	Site open for contracting staff. Minimal light deliveries throughout the day (weather pending)	Road base material delivery throughout the day (weather pending). Trucks guided as required	Multiple deliveries of steel reinforcements scheduled throughout the day (weather pending). Trucks guided as required	Road base material delivery throughout the day (weather pending). Trucks guided as required	Multiple concrete throughout the day. Standing traffic control will be in place throughout the day at required locations (weather pending)
08.00am						
09.00am						
10.00am						
11.00am						
12.00pm						
01.00pm						
02.00pm						
03.00pm						
04.00pm						
05.00pm						
06.00pm						

TAFE NSW NEPEAN – KINGSWOOD CAMPUS TRAFFIC PLAN

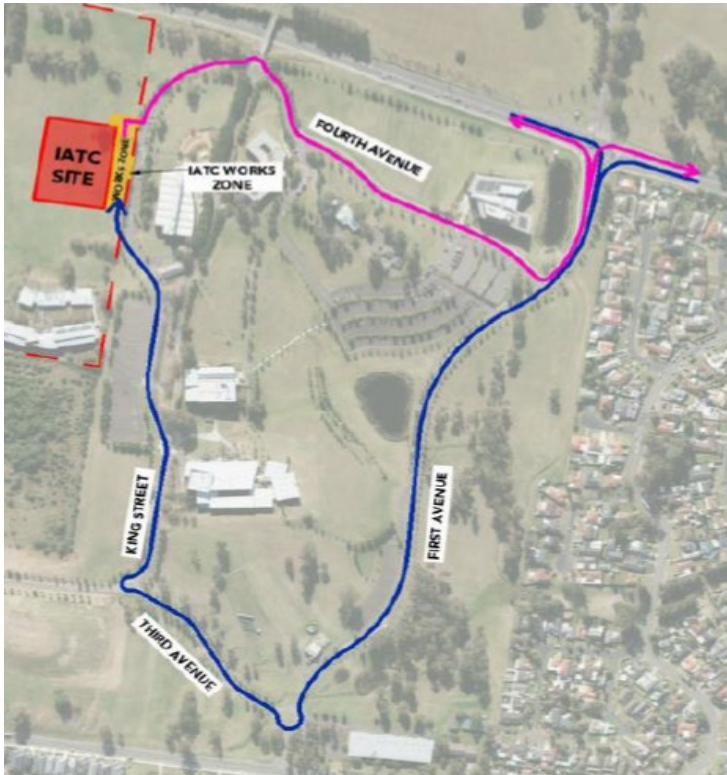
TAFE NSW Nepean - Kingswood Campus Specific Risk Assessment and Traffic Control Plan



Truck Access Route and Site Plan

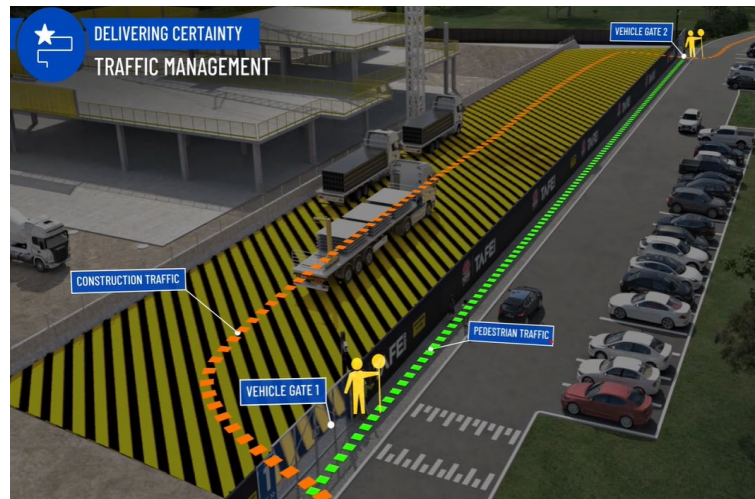
CONSTRUCTION TRAFFIC ROUTE AND SITE ACCESS

WESTERN SYDNEY UNIVERSITY WERRINGTON SOUTH



Blue = Construction traffic entry
Pink = Construction traffic exit

Traffic control will be in place (as required) between:
7am and 6pm Monday-Friday
8am and 1pm Saturdays



IATC Construction site entry and exit



All construction vehicles will enter and exit the WSU Werrington South Campus in a controlled manner.

All construction vehicle parking will be maintained within the site compound with entry and exit through TAFE NSW Nepean Kingswood Campus.

No WSU parking will be affected due to the construction.

KEY CONTACTS

For key project updates and information about the Institute of Applied Technology for Construction please visit the project website at

- [IATC project website](#)
- Phone: [1800 752 142](tel:1800752142)
- Email: iat@tafensw.edu.au

For all project related questions, concerns or complaints please contact:

Cameron Lang, TAFE NSW Investment Project Director at
cameron.lang2@tafensw.edu.au or 0408 406 919.

For all day to day construction related question please contact:

Pierce Brennan, ADCO Construction Senior Project Manager on 0419 422 566

Simon Brown, ADCO Construction Site Manager on 0419 012 704

Mitch Alexander, TAFE NSW Senior Project Manager (Cadence Australia) on 0428 440 555