

TAFENSW

IATC WEEKLY CONSTRUCTION STATUS UPDATE

INSTITUTE OF APPLIED TECHNOLOGY
CONSTRUCTION (IATC)

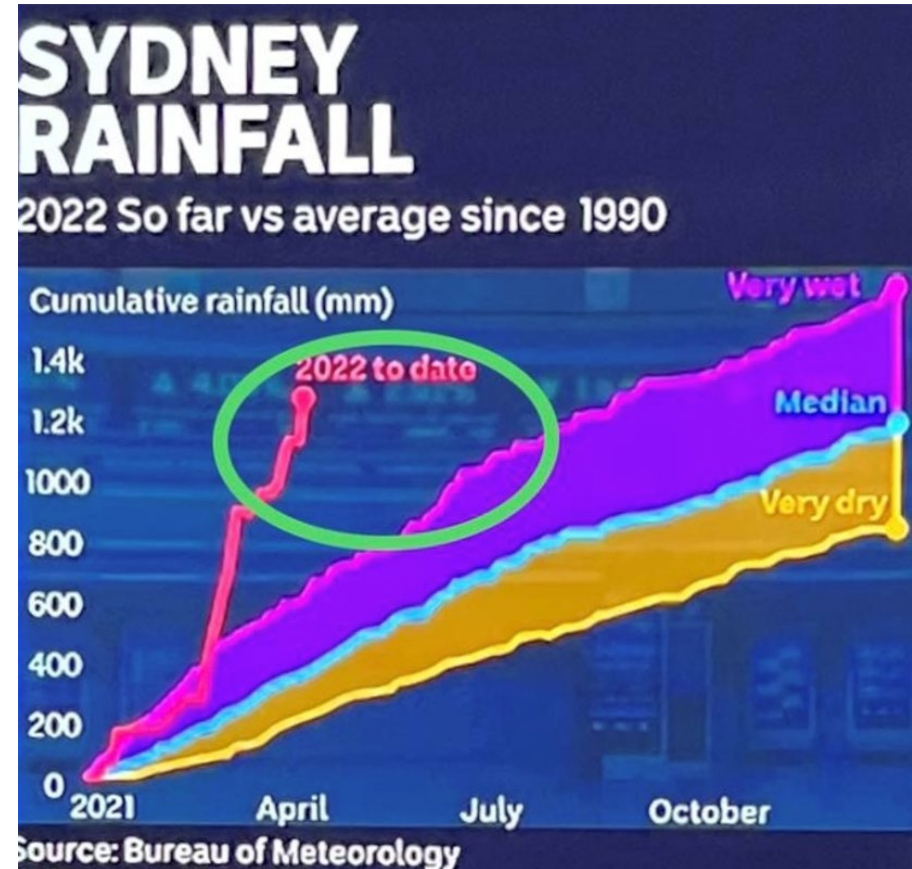
29 April 2022

CONTINUED WET WEATHER

Wet weather continues to challenge the inground civil and structural foundation works.

Today's (29/04/2022) scheduled major concrete pour(s) were cancelled due to the inclement weather experienced on Wednesday and Thursday. Unfortunately, the team were unable to place the moisture barrier, waffle pods and steel to get it inspected prior to the pour.

The pour has been rescheduled to Tuesday, Wednesday and Friday next week (weather pending).



Weather records

OUR IATC ROADMAP



IATC Open
For
Business



Q3 2021

Q4 2021

Q1 2022

Q2 2022

Q3 2022

Q4 2022

Q1 2023

**Contractor RTA
and
First Partner
Workshop**

1

2

**Collaboration Agreements
and Construction**

- Recommendation to award made for building contractor
- First all partner workshop takes place
- Collaboration Agreements signed by Uni & principal industry partner
- Building construction commences

Education Model
Education Model agreed by
all partners

3

4

Operating Model

- Operating Model developed
- Product development
- Workforce planning
- Op Readiness plan refined

Marketing Campaign
IATC Marketing Campaign begins ahead
of enrolment period

5

6

**Construction
Complete**

Construction complete and
ready for handover to business

**Operational
Readiness**

Preparation for IAT opening

7

We are here

HIGHLIGHTS AND ACHIEVEMENTS (WE 29/04/22)

- Continued rain affected progress on site this week
- Wet weather site recovery continued
- Piles and pile caps, formwork and steel reinforcements for lower ground floor columns, lift cores and slab continued when possible between rain events
- Service trenching works from Gate 2 continued when possible between rain events
- 100% Architectural detailed designed presentation to end user stakeholders



Lower ground floor form work edge boards

SITE PHOTOGRAPHS (WE 30/04/22)



Aerial Drone Photograph



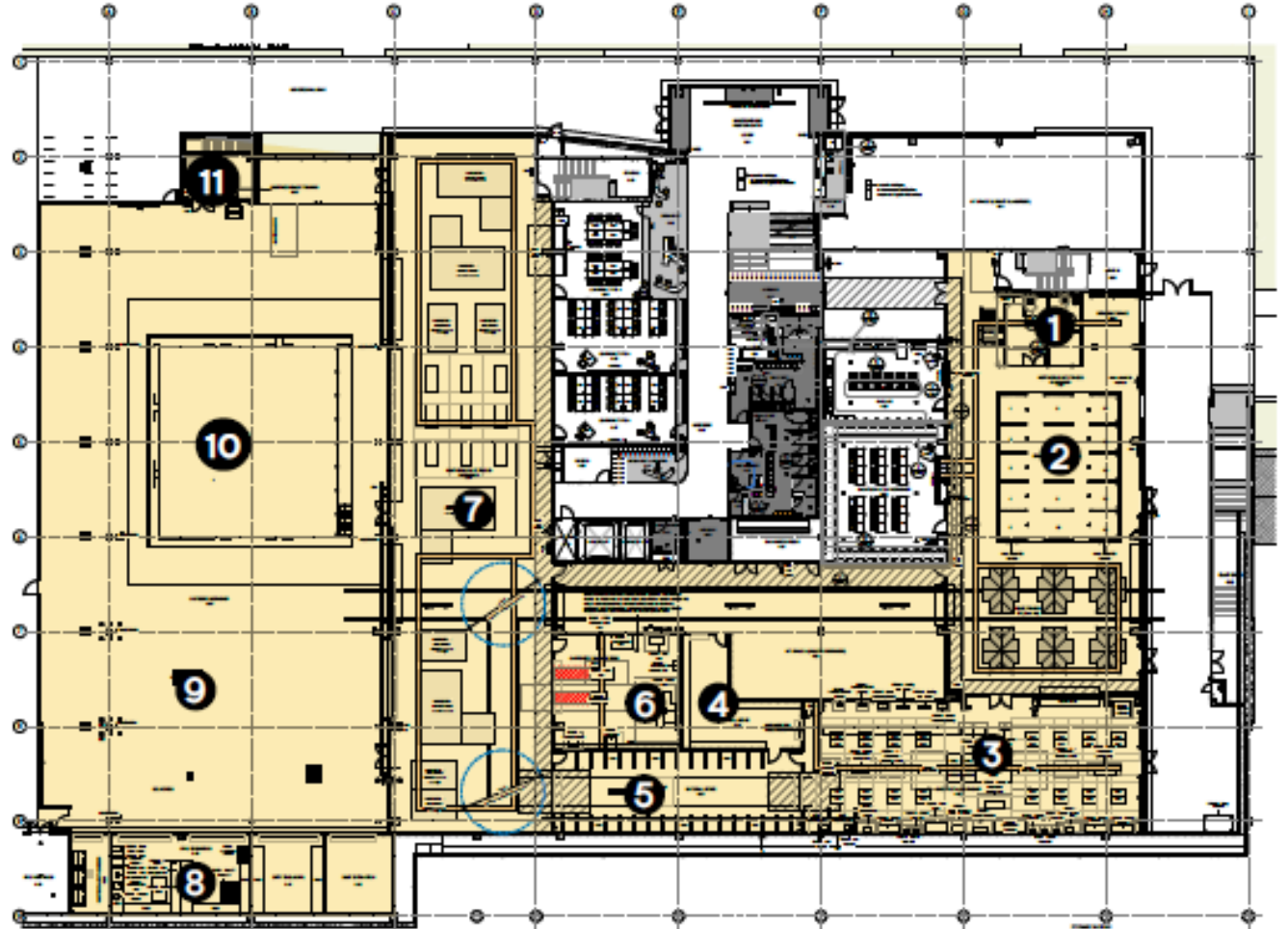
Lower ground floor slab preparation



Lower ground floor slab preparation

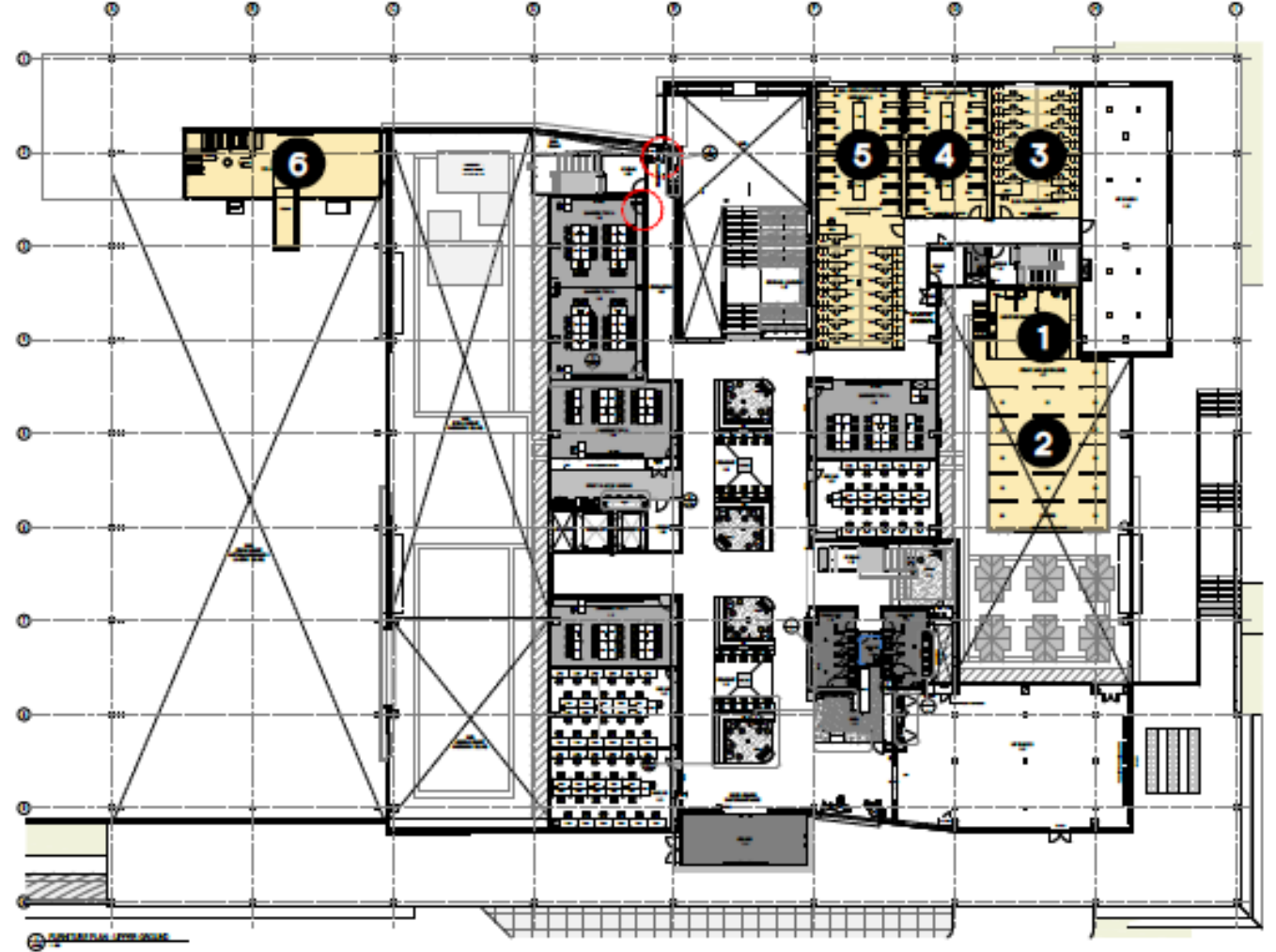
Lower Ground - Specialist Workshops

1	Capstone House LG
2	Northern Multi-Trades Workshop + Fit Off Bays
3	Sheet Metal Workshop
4	Tools Store
5	Materials Store
6	Carpentry Machine Room
7	Southern Multi-trades Workshop
8	Civil Resources + Dirty Tool Store
9	Southern Outdoor Workshop
10	Sandpit
11	Confined Space Training

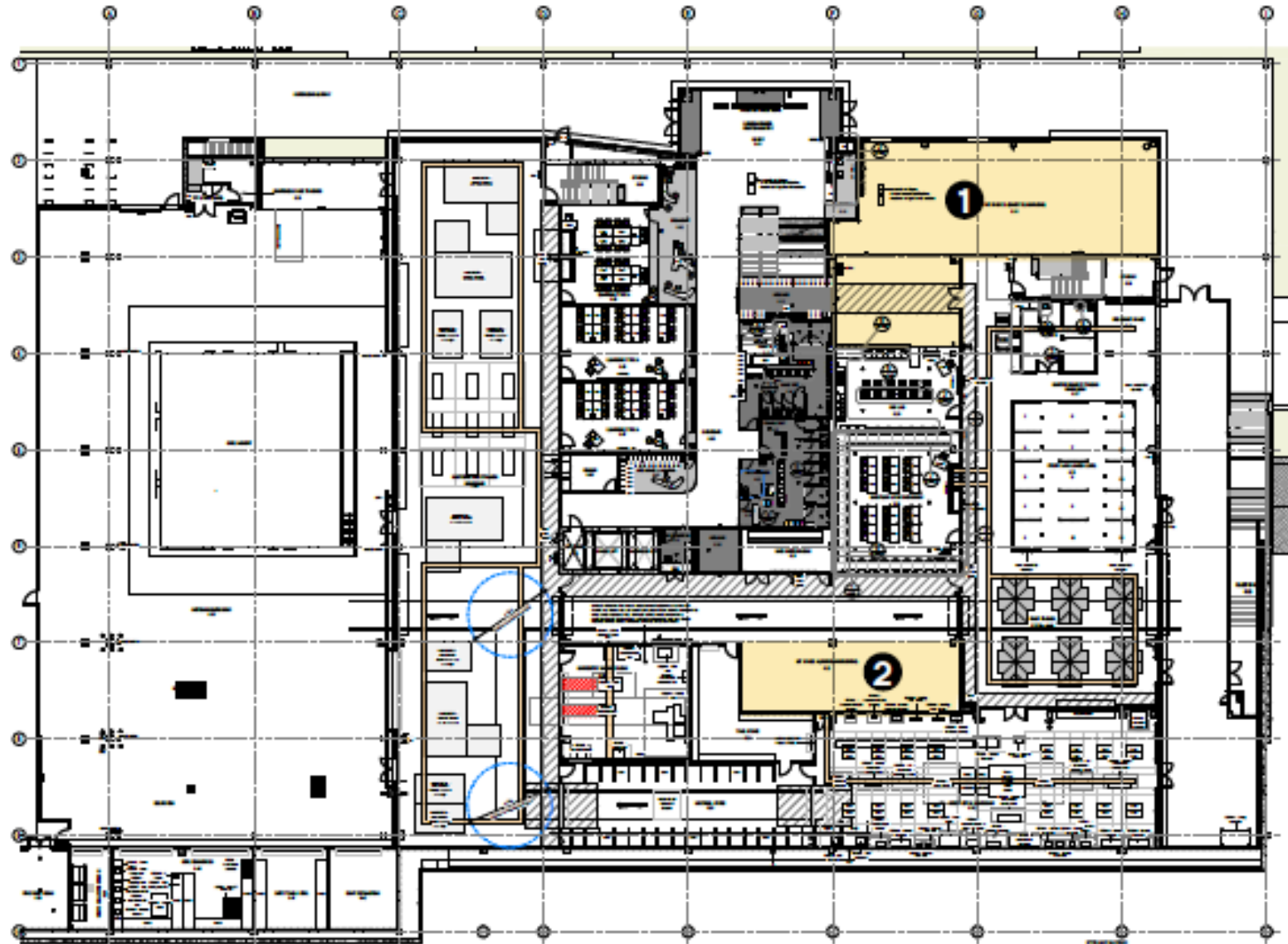


Upper Ground – Specialist Workshops

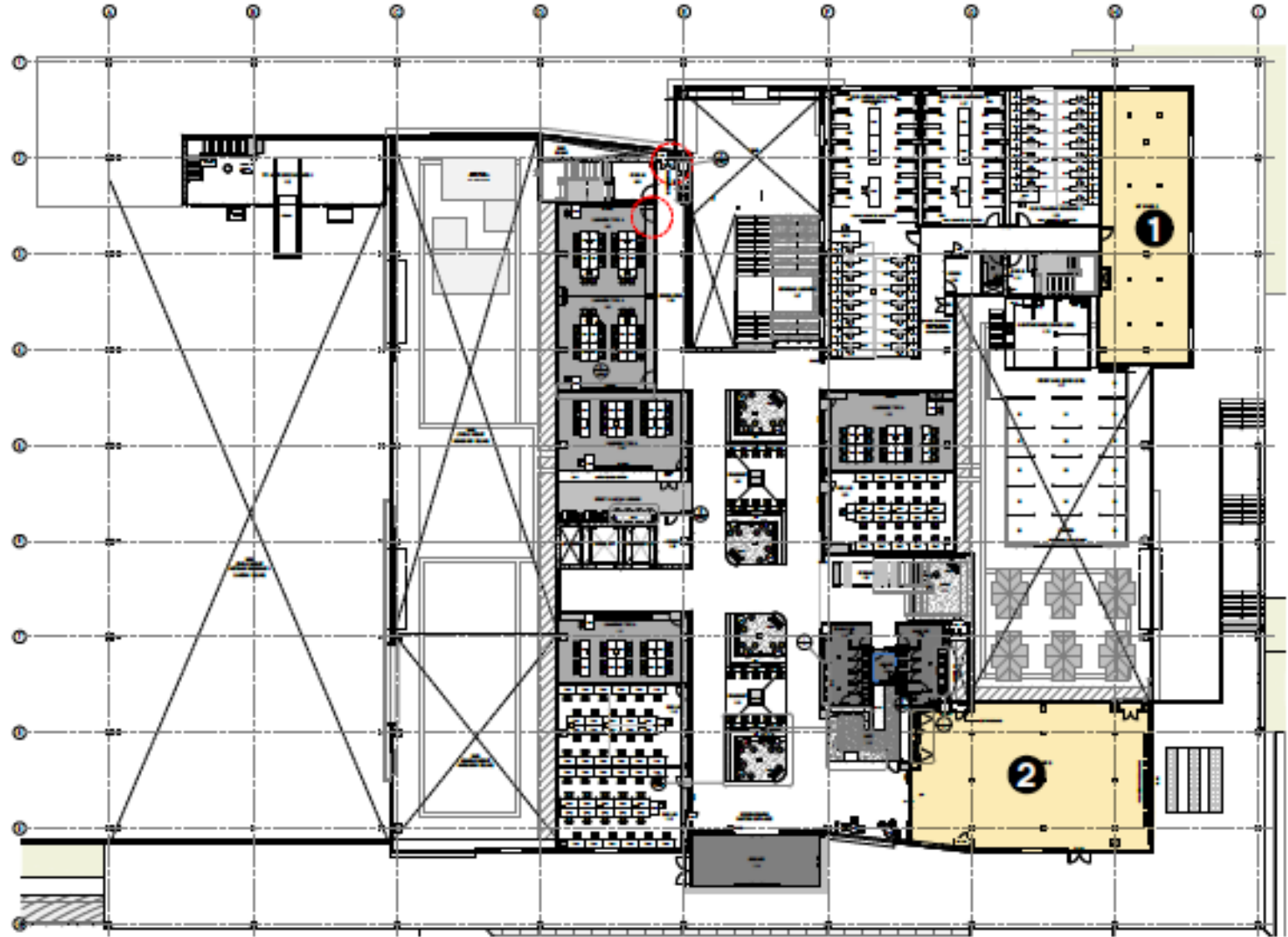
1	Capstone House UG
2	Fit Off Bays UG
3	Electrotech Teaching UG
4	Electrotech Wiring Workshop
5	Electrotech Wiring + teaching Workshop
6	High Risk TPT + WFH UG



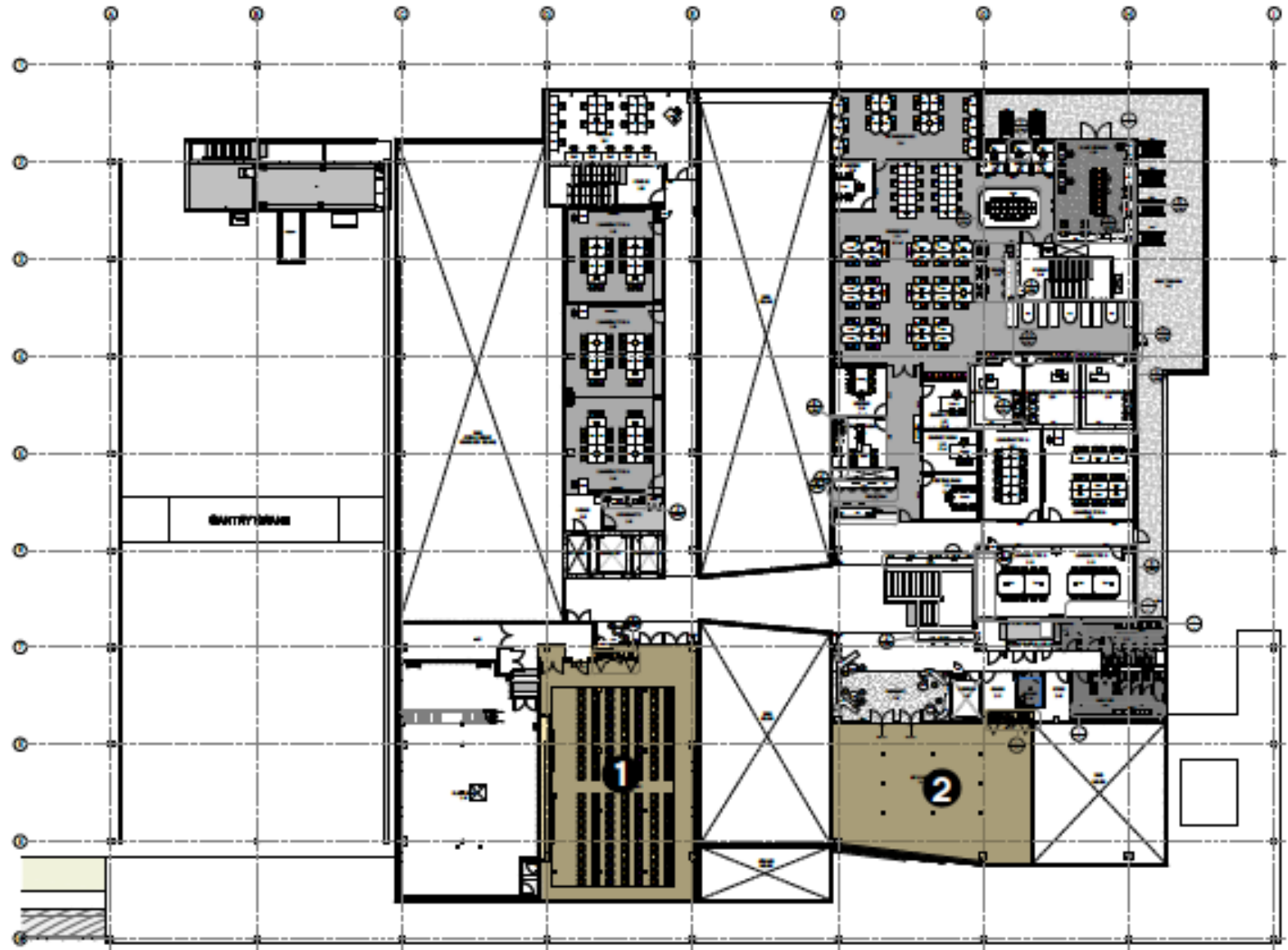
IAT Space - Lower Ground



IAT Space - Upper Ground



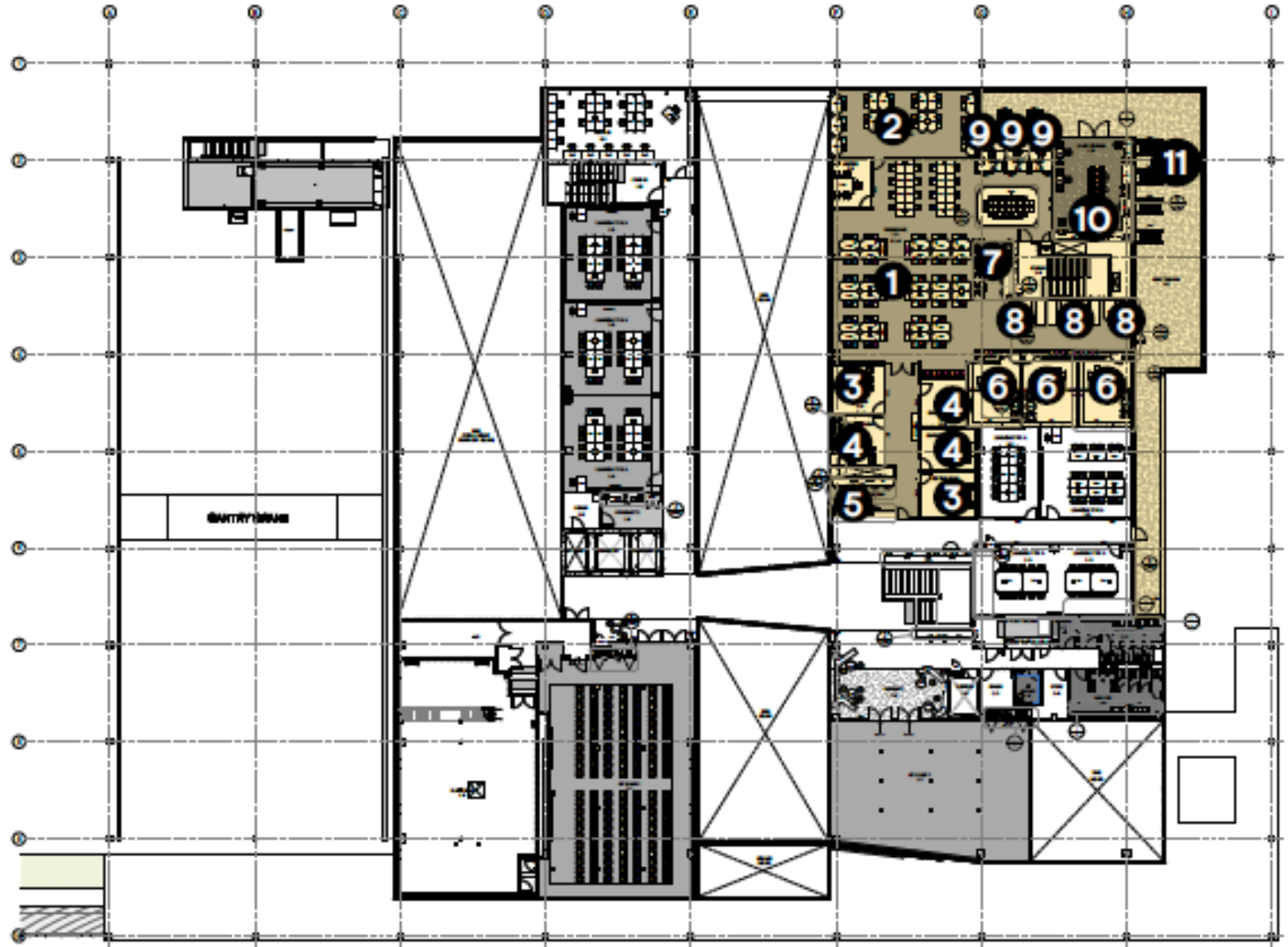
IAT Space - Level One



IAT Space – Level One Workspaces

IAT Workspace – Labelled No.2

Staff Workspace – Labelled 1, 3-10



Finishes



Common Space



Lobby & Reception



Utilities & Kitchenettes



Atrium & Cafe



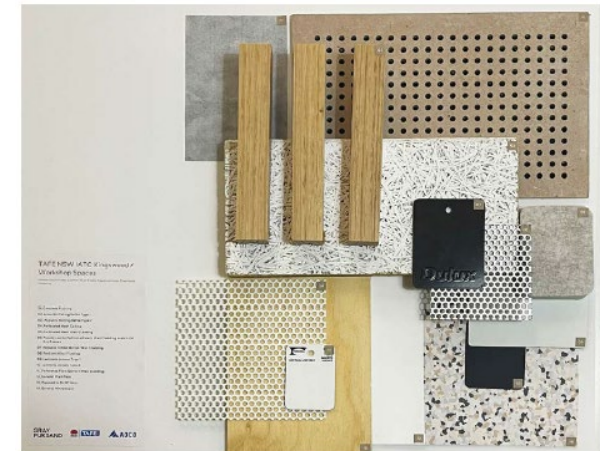
Staff Workspace



IAT Spaces



Typical Learning & CAD Labs



Workshops

NEXT STEPS (02/05- 07/05/22)

- Continue wet weather recovery as required
- Continue piling
- Continue formwork and steel reinforcements for lower ground floor columns, lift cores and slab. Concrete pour 01 scheduled (site conditions and weather pending)
- Continue service trenching works from Gate 2
- Commence Northern stormwater works



Lower ground level to upper ground level perspective. Overall building height to be similar to the WSU building in the back drop

COVID 19 MANAGEMENT PLAN

- COVID 19 controls maintained on site
- ADCO and Government Sign in at entry
- SafeWork NSW Management Plans updated
- Awareness signage increased around site
- Scheduled lunch break cycles
- Full time cleaning crew
- Limiting unnecessary site visits
- Project Team Resilience Plan in place

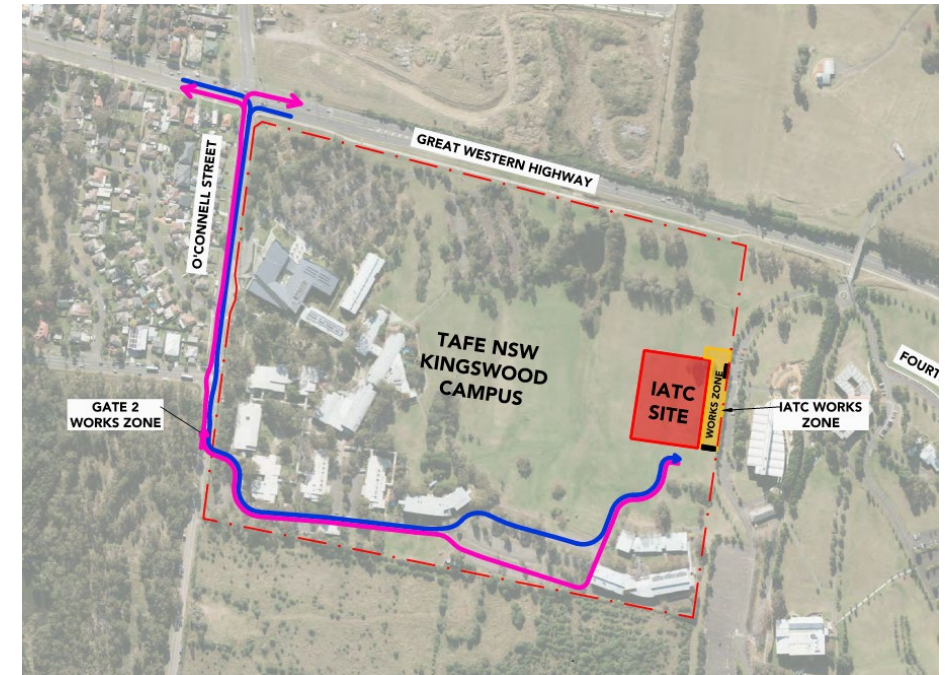


TRAFFIC MOVEMENTS (WC 02/05/22)

Traffic movement through Western Sydney University Werrington South Campus

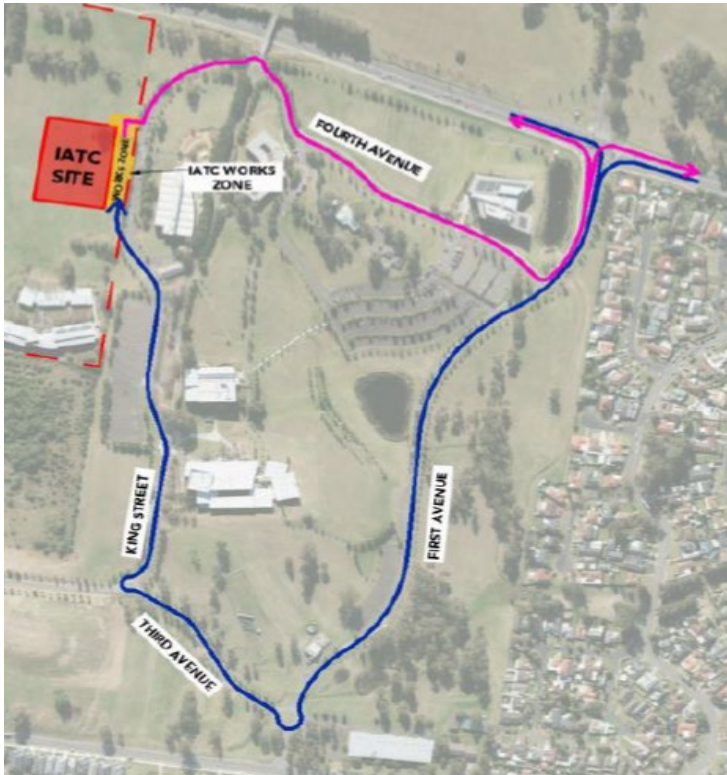
	Monday 2/05/2022	Tuesday 3/05/2022	Wednesday 4/05/2022	Thursday 6/05/2022	Friday 7/05/2022	Saturday 8/05/2022
Description of Work Activities	Piling to Southern retaining wall, plastic, waffle pods, steel, pest control for lower ground floor slab (weather pending)	Final preparation for concrete pour 01 including engineer inspection, bulk excavation to sheers wall 03 and continue services trenching works (weather pending)	Continuation of piling and concrete pours, bulk excavations and service trenching works (weather pending)	Continuation of piling and concrete pours, bulk excavations and service trenching works (weather pending)	Continuation of concrete pours and services trenching works	Formwork and placement of steel to retaining wall capping beam
Standing Traffic Control	Not required	Required (if concrete pour proceeds)	Required (if concrete pour proceeds)	Required (if concrete pour shifts)	Required (if concrete pour proceeds)	Not Required
07.00am	Deliveries of material expected throughout the day	Concrete trucks schedule in the afternoon. (weather pending *Note - days could shift without notice)	Concrete trucks schedule throughout the day (weather pending *Note - days could shift without notice)	Deliveries of material expected throughout the day	Concrete trucks schedule throughout the day (weather pending *Note - days could shift without notice)	Np planned deliveries
08.00am						
09.00am						
10.00am						
11.00am						
12.00pm						
01.00pm						
02.00pm						
03.00pm						
04.00pm						
05.00pm						
06.00pm						

TAFE NSW Nepean - Kingswood Campus Specific Risk Assessment and Traffic Control Plan



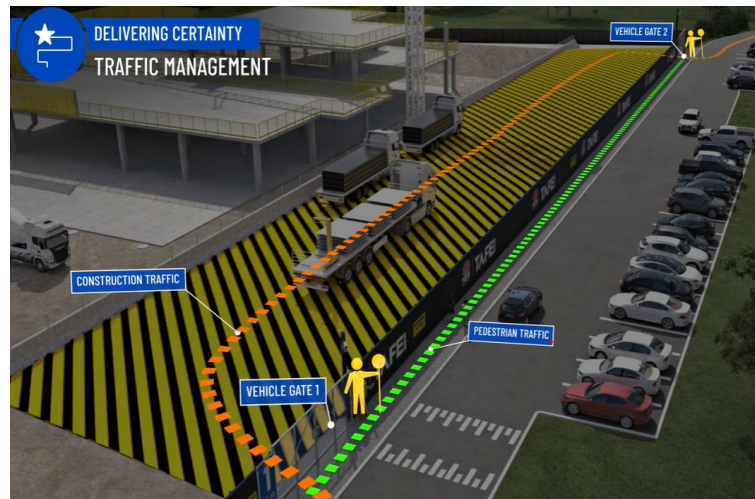
CONSTRUCTION TRAFFIC ROUTE AND SITE ACCESS

WESTERN SYDNEY UNIVERSITY WERRINGTON SOUTH



Blue = Construction traffic entry
Pink = Construction traffic exit

Traffic control will be in place (as required) between:
7am and 6pm Monday-Friday
8am and 1pm Saturdays



IATC Construction site entry and exit



All construction vehicles will enter and exit the WSU Werrington South Campus in a controlled manner.

All construction vehicle parking will be maintained within the site compound with entry and exit through TAFE NSW Nepean Kingswood Campus.

No WSU parking will be affected due to the construction.

KEY CONTACTS

For key project updates and information about the Institute of Applied Technology for Construction please visit the project website at

- [IATC project website](#)
- Phone: [1800 752 142](tel:1800752142)
- Email: iat@tafensw.edu.au

For all project related questions, concerns or complaints please contact:

Cameron Lang, TAFE NSW Investment Project Director at
cameron.lang2@tafensw.edu.au or 0408 406 919.

For all day to day construction related question please contact:

Pierce Brennan, ADCO Construction Senior Project Manager on 0419 422 566

Simon Brown, ADCO Construction Site Manager on 0419 012 704

Mitch Alexander, TAFE NSW Senior Project Manager (Cadence Australia) on 0428 440 555