

TAFENSW

IATC WEEKLY CONSTRUCTION STATUS UPDATE

INSTITUTE OF APPLIED TECHNOLOGY
CONSTRUCTION (IATC)

13 May 2022

RETURN OF THE WET WEATHER

With blue sky for most of last week, the wet weather made a return again this week, hampering spirits and some planned works.

With that being said, ADCO managed to successfully pour another 500m² section of the lower ground floor slab on Thursday.

We now have around 1500m² of the 4500m² footprint ready to start to bring up columns and some high strutted formwork to prepare for the first stage of the upper ground floor.

With some clearing sky next week we should see some more areas prepared in more concrete placed.

Click on the link:

[IATC Time Lapse 13052022.xspf](#)



Lower ground floor concrete pour

OUR IATC ROADMAP



IATC Open
For
Business



Q3 2021

Q4 2021

Q1 2022

Q2 2022

Q3 2022

Q4 2022

Q1 2023

**Contractor RTA
and
First Partner
Workshop**

1

2

**Collaboration Agreements
and Construction**

- Collaboration Agreements signed by Uni & principal industry partner
- Building construction commences

3

Education Model

Education Model agreed by all partners

4

Operating Model

- Operating Model developed
- Product development
- Workforce planning
- Op Readiness plan refined

5

Marketing Campaign

IATC Marketing Campaign begins ahead of enrolment period

6

7

**Operational
Readiness**

Preparation for IAT opening

**Construction
Complete**

Construction complete and ready for handover to business

We are here

HIGHLIGHTS AND ACHIEVEMENTS (WE 14/05/22)

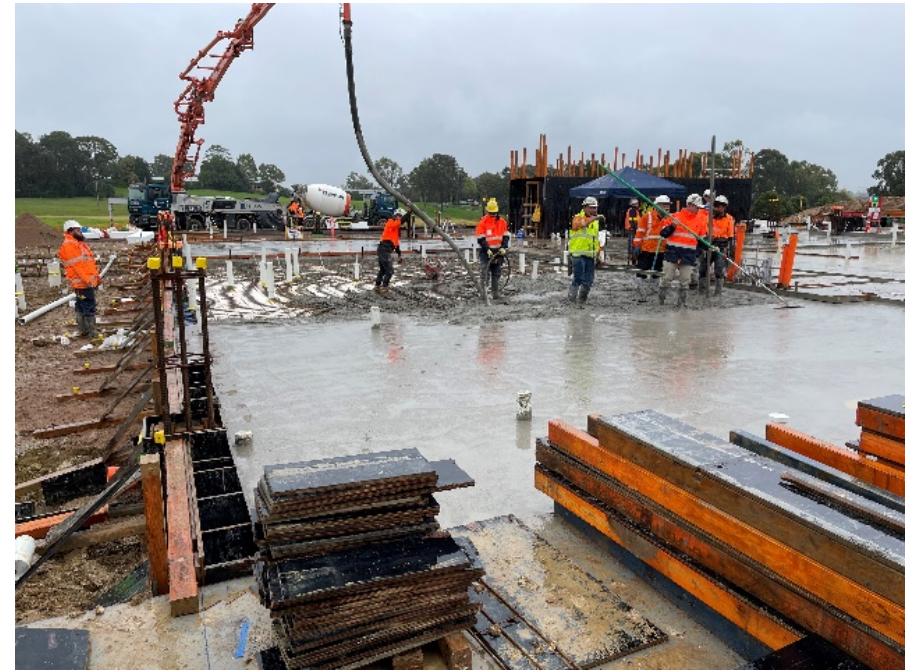
- Wet weather site recovery continued
- Lower ground floor concrete pour No.3 completed
- Preparation for future concrete pours continued
- Service trenching works from Gate 2 continued
- Services design meetings continued
- Operational readiness workshops commenced



Sand blinding layer being placed



Waffle pods and steel reinforcement



Concrete pour No.3

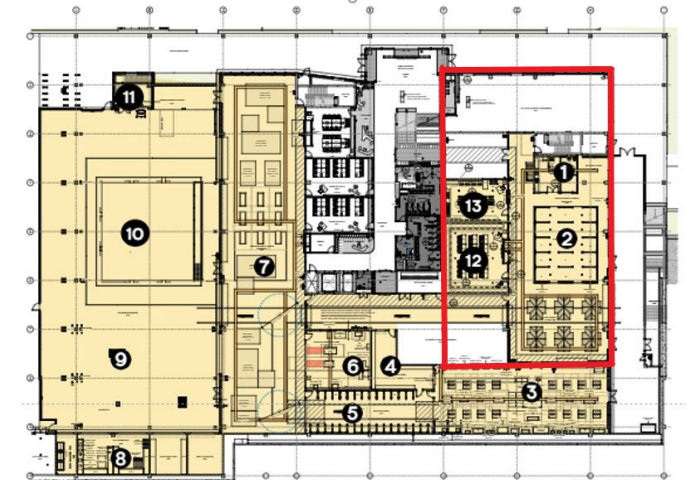
SITE PHOTOGRAPHS (WE 14/05/22)



Aerial Drone Photograph showing concrete pour No.3



Lower ground floor concrete pour No.03



Lower ground floor area now completed

NEXT STEPS (16/05 - 21/05/2022)

- Continue wet weather recovery as required
- Continue preparation for further concrete pours No.04 & 05
- Commence forming columns and erecting high struted formwork
- Continue service trenching works from Gate 2
- Continue Northern stormwater works
- Continue preparation for retaining walls
- Continue building services designs



Preparation for further concrete pours, retaining walls and erection of columns and high struted formwork

COVID 19 MANAGEMENT PLAN

- COVID 19 controls maintained on site
- ADCO and Government Sign in at entry
- SafeWork NSW Management Plans updated
- Awareness signage increased around site
- Scheduled lunch break cycles
- Full time cleaning crew
- Limiting unnecessary site visits
- Project Team Resilience Plan in place

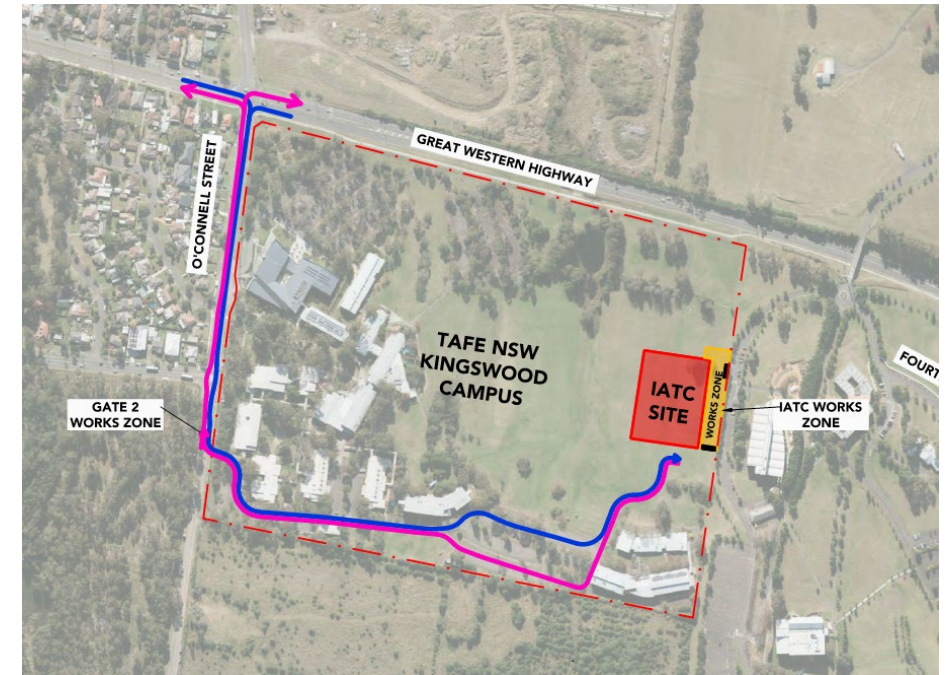


TRAFFIC MOVEMENTS (WC 16/05/22)

Traffic movement through Western Sydney University Werrington South Campus

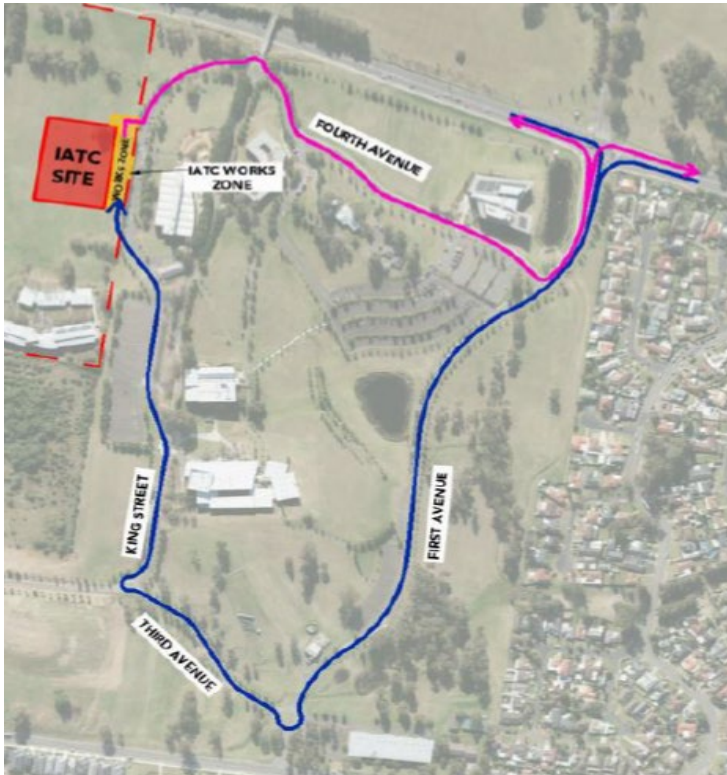
	Monday 16/05/2022	Tuesday 17/05/2022	Wednesday 18/05/2022	Thursday 19/05/2022	Friday 20/05/2022	Saturday 21/05/2022
Description of Work Activities	Preparation for further lower ground floor concrete pours, retaining wall, stair core, columns and continue service trenching works from Gate 2 (weather pending)	Preparation for further lower ground floor concrete pours, retaining wall, stair core, columns and continue service trenching works from Gate 2 (weather pending)	Preparation for further lower ground floor concrete pours, retaining wall, stair core, columns, waterproofing, and continue service trenching works from Gate 2 (weather pending)	Preparation for further lower ground floor concrete pours, retaining wall, stair core, columns, waterproofing, and continue service trenching works from Gate 2 (weather pending)	Commencement of high started formwork and deck for upper ground floor, and placement of steel for stair core and columns, and continue service trenching works from Gate 2 (weather pending)	Continuation of high started formwork and deck for upper ground floor, and placement of steel for stair core and columns
Standing Traffic Control	Not required	Not required	Not required	Not required	Not required	Not Required
07.00am						
08.00am						
09.00am						
10.00am						
11.00am						
12.00pm						
01.00pm	Deliveries of material expected throughout the day	Deliveries of material expected throughout the day and collection/replacement of a waste bin	Deliveries of material expected throughout the day with concrete trucks to be guided through the WSU truck access route.	Deliveries of material expected throughout the day with concrete trucks to be guided through the WSU truck access route.	Deliveries of material expected throughout the day	Deliveries of material expected throughout the morning
02.00pm						
03.00pm						
04.00pm						
05.00pm						
06.00pm						

TAFE NSW Nepean - Kingswood Campus Specific Risk Assessment and Traffic Control Plan



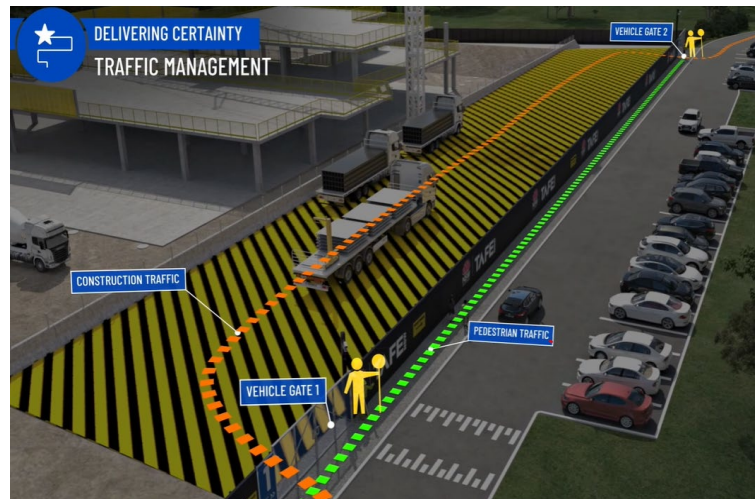
CONSTRUCTION TRAFFIC ROUTE AND SITE ACCESS

WESTERN SYDNEY UNIVERSITY WERRINGTON SOUTH



Blue = Construction traffic entry
Pink = Construction traffic exit

Traffic control will be in place (as required) between:
7am and 6pm Monday-Friday
8am and 1pm Saturdays



IATC Construction site entry and exit



All construction vehicles will enter and exit the WSU Werrington South Campus in a controlled manner.

All construction vehicle parking will be maintained within the site compound with entry and exit through TAFE NSW Nepean Kingswood Campus.

No WSU parking will be affected due to the construction.

KEY CONTACTS

For key project updates and information about the Institute of Applied Technology for Construction please visit the project website at

- [IATC project website](#)
- Phone: [1800 752 142](tel:1800752142)
- Email: iat@tafensw.edu.au

For all project related questions, concerns or complaints please contact:

Cameron Lang, TAFE NSW Investment Project Director at
cameron.lang2@tafensw.edu.au or 0408 406 919.

For all day to day construction related question please contact:

Pierce Brennan, ADCO Construction Senior Project Manager on 0419 422 566

Simon Brown, ADCO Construction Site Manager on 0419 012 704

Mitch Alexander, TAFE NSW Senior Project Manager (Ernst & Young) on 0428 440 555