

**TAFE**NSW

## **IATC WEEKLY CONSTRUCTION STATUS UPDATE**

INSTITUTE OF APPLIED TECHNOLOGY  
**CONSTRUCTION (IATC)**

27 May 2022

## RETURN OF BLUE SKY

With the return of clear sky this week we have seen some great progress again on site. Core structure elements continue to be progressed along with preparation for further lower ground floor concrete pours. It was great to see the frames being erected for the upper ground floor deck which we will see progress over the coming week. Service trenching works through the main campus are well progressed as are the new substation works.



Upper ground floor frames for deck being placed



# OUR IATC ROADMAP



IATC Open  
For  
Business



Q3 2021

Q4 2021

Q1 2022

Q2 2022

Q3 2022

Q4 2022

Q1 2023

**Contractor RTA  
and  
First Partner  
Workshop**

1

2

**Collaboration Agreements  
and Construction**

- Collaboration Agreements signed by Uni & principal industry partner
- Building construction commences

3

**Education Model**  
Education Model agreed by  
all partners

4

**Operating Model**

- Operating Model developed
- Product development
- Workforce planning
- Op Readiness plan refined

5

**Marketing Campaign**

IATC Marketing Campaign begins ahead  
of enrolment period

6

7

**Operational  
Readiness**

Preparation for IAT opening

**Construction  
Complete**

Construction complete and  
ready for handover to business

We are here

## HIGHLIGHTS AND ACHIEVEMENTS (WE 28/05/22)

- Wet weather site recovery continued
- Eastern retaining wall shutter placement commenced
- Preparation for future concrete pours continued
- Stair core No.2 waterproofed
- Lift pit shafts being reinforced and formed
- Service trenching through the campus continued
- Substation works commenced
- Building services design continued
- Site safety audit completed



Eastern retaining wall  
shutters being placed



# SITE PHOTOGRAPHS (WE 28/05/22)



Aerial Drone Photograph



Aerial Drone Photograph



## NEXT STEPS (30/05 – 04/06/2022)

- Continue wet weather recovery as required
- Continue formwork and reinforcement for lift shaft walls
- Continue formworks and reinforcements to retaining wall footings
- Continue placing retaining wall shutters
- Continue preparation for further concrete pours
- Continue forming columns and erecting high strutted formwork for upper ground floor deck
- Continue service trenching works from Gate 2 and substation works



Preparation for Central Atrium concrete pour

# COVID 19 MANAGEMENT PLAN

- COVID 19 controls maintained on site
- ADCO and Government Sign in at entry
- SafeWork NSW Management Plans updated
- Awareness signage increased around site
- Scheduled lunch break cycles
- Full time cleaning crew
- Limiting unnecessary site visits
- Project Team Resilience Plan in place



# TRAFFIC MOVEMENTS (WC 30/05/22)

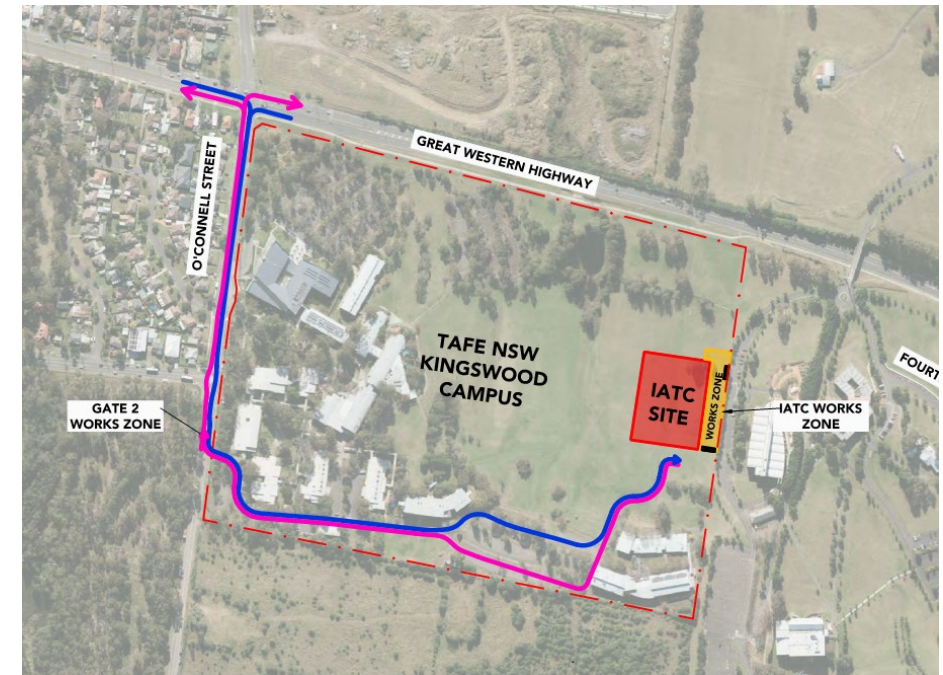
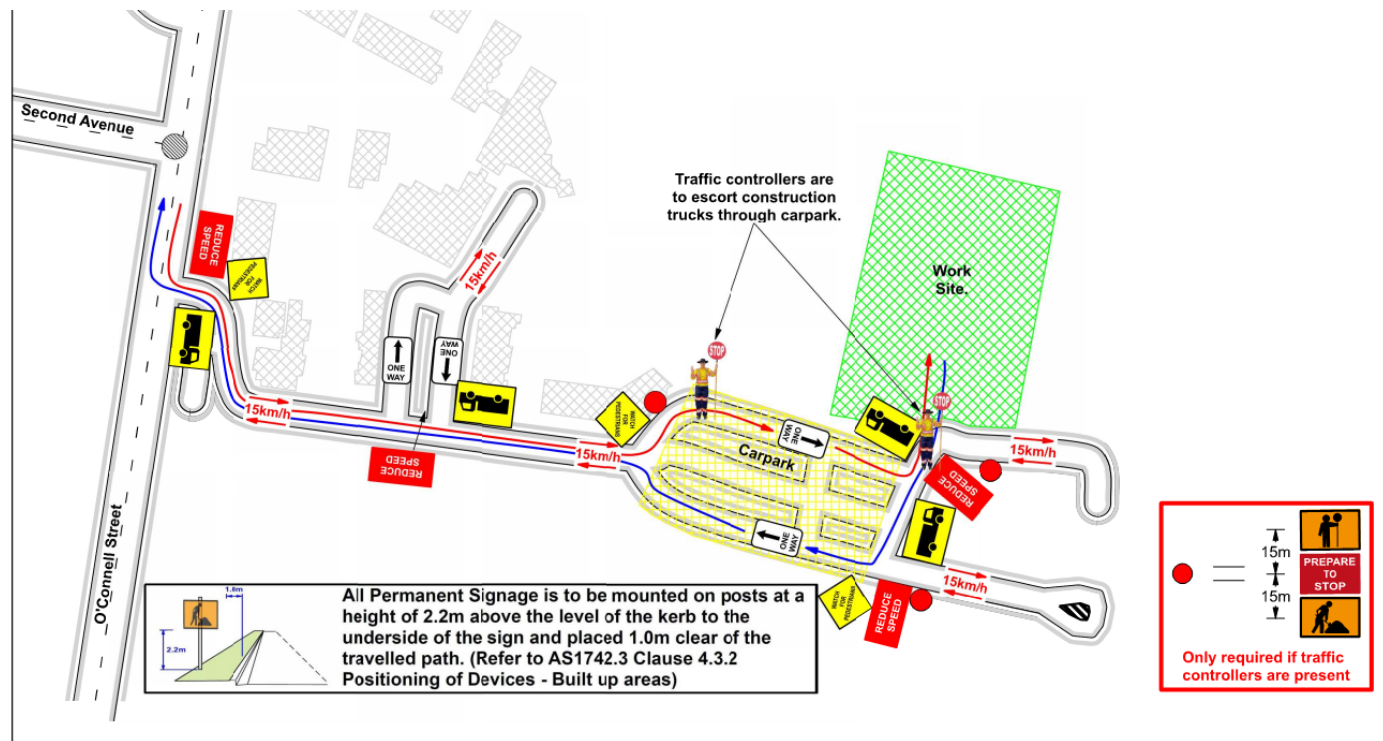
Traffic movement through Western Sydney University Werrington South Campus

	Monday 30/05/2022	Tuesday 31/05/2022	Wednesday 1/06/2022	Thursday 2/06/2022	Friday 3/06/2022	Saturday 4/06/2022
<b>Description of Work Activities</b>	Formwork and reinforcement placement, service trenching and waterproofing	Formwork and reinforcement placement, detailed excavation, service trenching and substaion works, preparation for concrete pour	Formwork and reinforcement placement, service trenching and concrete pour	Formwork and reinforcement placement, service trenching and concrete pour	Formwork and reinforcement placement, detailed excavation, service trenching and substaion works	Formwork and reinforcement placement, service trenching and substaion works
<b>Standing Traffic Control</b>	Not required	Not required	Not required	Not required	Not required	Not Required
<b>07.00am</b>						
<b>08.00am</b>						
<b>09.00am</b>						
<b>10.00am</b>						
<b>11.00am</b>						
<b>12.00pm</b>	Deliveries of material expected throughout the day	Deliveries of material expected throughout the day	Approximately 8 x concrete trucks and material deliveries expected. ADCO guide vehicles will be in motion.	Approximately 4 x concrete trucks and material deliveries expected. ADCO guide vehicles will be in motion.	Delivery of materials expected throughout the day	Delivery of materials expected throughout the day
<b>01.00pm</b>						
<b>02.00pm</b>						
<b>03.00pm</b>						
<b>04.00pm</b>						
<b>05.00pm</b>						
<b>06.00pm</b>						



# TAFE NSW NEPEAN - KINGSWOOD CAMPUS TRAFFIC PLAN

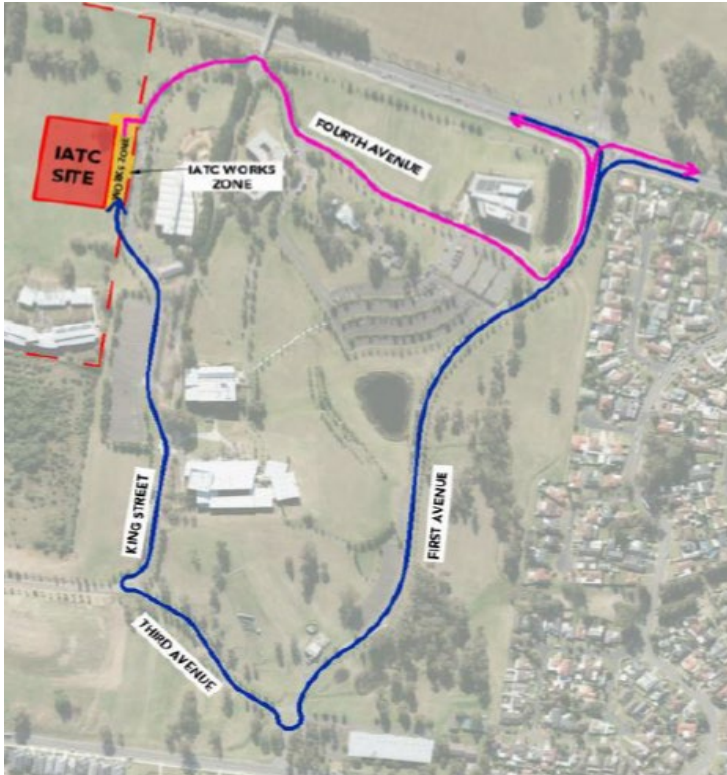
## TAFE NSW Nepean - Kingswood Campus Specific Risk Assessment and Traffic Control Plan



Truck Access Route and Site Plan

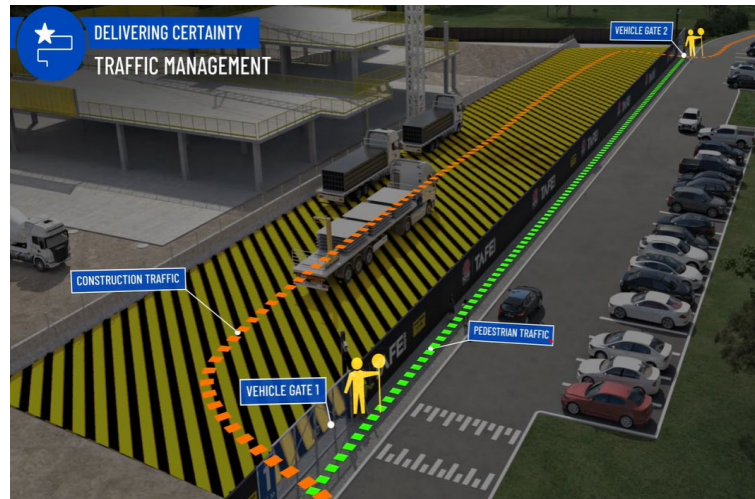
# CONSTRUCTION TRAFFIC ROUTE AND SITE ACCESS

## WESTERN SYDNEY UNIVERSITY WERRINGTON SOUTH



Blue = Construction traffic entry  
Pink = Construction traffic exit

Traffic control will be in place (as required) between:  
7am and 6pm Monday-Friday  
8am and 4pm Saturdays



IATC Construction site entry and exit



All construction vehicles will enter and exit the WSU Werrington South Campus in a controlled manner.

All construction vehicle parking will be maintained within the site compound with entry and exit through TAFE NSW Nepean Kingswood Campus.

No WSU parking will be affected due to the construction.



## KEY CONTACTS

For key project updates and information about the Institute of Applied Technology for Construction please visit the project website at

- [IATC project website](#)
- Phone: [1800 752 142](tel:1800752142)
- Email: [iat@tafensw.edu.au](mailto:iat@tafensw.edu.au)

**For all project related questions, concerns or complaints please contact:**

Cameron Lang, TAFE NSW Investment Project Director at  
[cameron.lang2@tafensw.edu.au](mailto:cameron.lang2@tafensw.edu.au) or 0408 406 919.

**For all day to day construction related question please contact:**

Pierce Brennan, ADCO Construction Senior Project Manager on 0419 422 566

Simon Brown, ADCO Construction Site Manager on 0419 012 704

Mitch Alexander, TAFE NSW Senior Project Manager (Ernst & Young) on 0428 440 555