

**TAFE**NSW

## **IATC WEEKLY CONSTRUCTION STATUS UPDATE**

INSTITUTE OF APPLIED TECHNOLOGY  
**CONSTRUCTION (IATC)**

03 June 2022



## CONTINUATION OF CLEAR SKY

The continuation of clear sky this week really enhanced spirits on site and allowed construction to progress well. Preparation of the remaining lower ground floor, footings, stair core, retaining wall, lift core and scaffolding were key focus areas. Another large concrete pour occurred on Thursday which saw part the Central Atrium placed with the next stage on its way for another pour early next week, along with the lower lift core walls and part of the large retaining wall.



Central Atrium concrete pour

# OUR IATC ROADMAP



IATC Open  
For  
Business



Q3 2021

Q4 2021

Q1 2022

Q2 2022

Q3 2022

Q4 2022

Q1 2023

**Contractor RTA  
and  
First Partner  
Workshop**

1

2

**Collaboration Agreements  
and Construction**

- Collaboration Agreements signed by Uni & principal industry partner
- Building construction commences

3

**Education Model**

Education Model agreed by all partners

4

**Operating Model**

- Operating Model developed
- Product development
- Workforce planning
- Op Readiness plan refined

5

**Marketing Campaign**

IATC Marketing Campaign begins ahead of enrolment period

6

7

**Operational  
Readiness**

Preparation for IAT opening

**Construction  
Complete March 2023**

Construction complete and ready for handover to business

We are here

## HIGHLIGHTS AND ACHIEVEMENTS (WE 04/06/22)

- Wet weather site recovery continued
- Eastern retaining wall shutter placement continued along with continuation of footing
- Lower ground floor Central Atrium concrete pour 01
- Preparation for future concrete pours continued
- Stair core No.2 lower walls poured
- Lower lift pit walls formed and ready for concrete
- High strutted formwork erecting commenced
- Service trenching through the campus continued
- Building services design continued



Stair core 01 stripping underway and high strutted formwork commenced



# SITE PHOTOGRAPHS (WE 04/06/22)



Aerial Drone Photograph



Stair core 01 and high struted formwork



Retaining wall shutters



## NEXT STEPS (06/06 – 11/06/2022)

- Concrete pour 01 for retaining wall and continue formwork and reinforcements to retaining wall footings
- Continue placing retaining wall shutters
- Continue preparation for further concrete pours
- Continue forming columns and erecting high strutted formwork for upper ground floor deck
- Continue service trenching works from Gate 2
- Continue waterproofing lower ground floor elements



Preparation for further Central Atrium concrete pours

# COVID 19 MANAGEMENT PLAN

- COVID 19 controls maintained on site
- ADCO and Government Sign in at entry
- SafeWork NSW Management Plans updated
- Awareness signage increased around site
- Scheduled lunch break cycles
- Full time cleaning crew
- Limiting unnecessary site visits
- Project Team Resilience Plan in place



# TRAFFIC MOVEMENTS (WC 06/06/22)

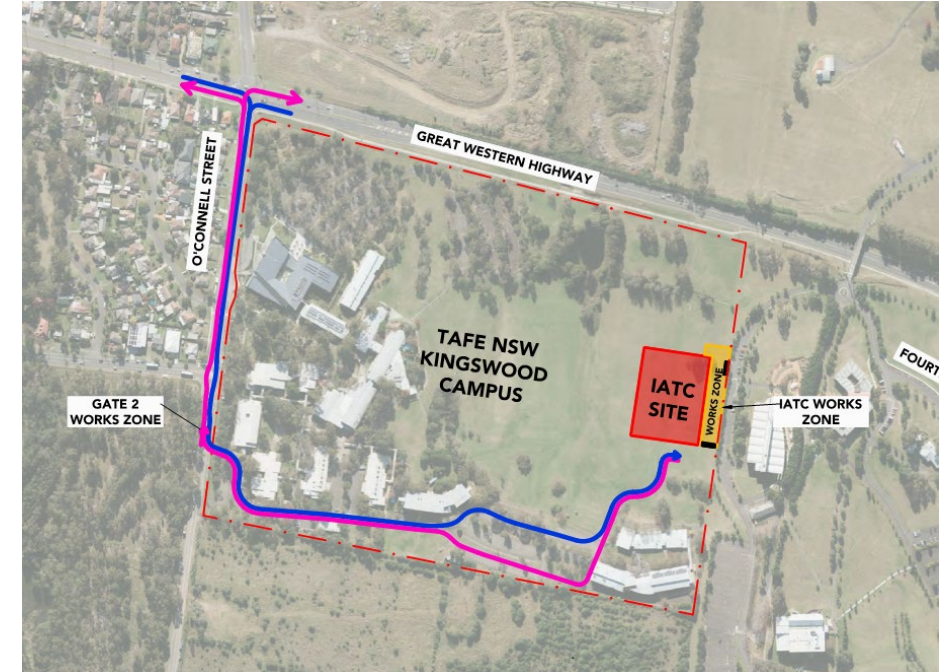
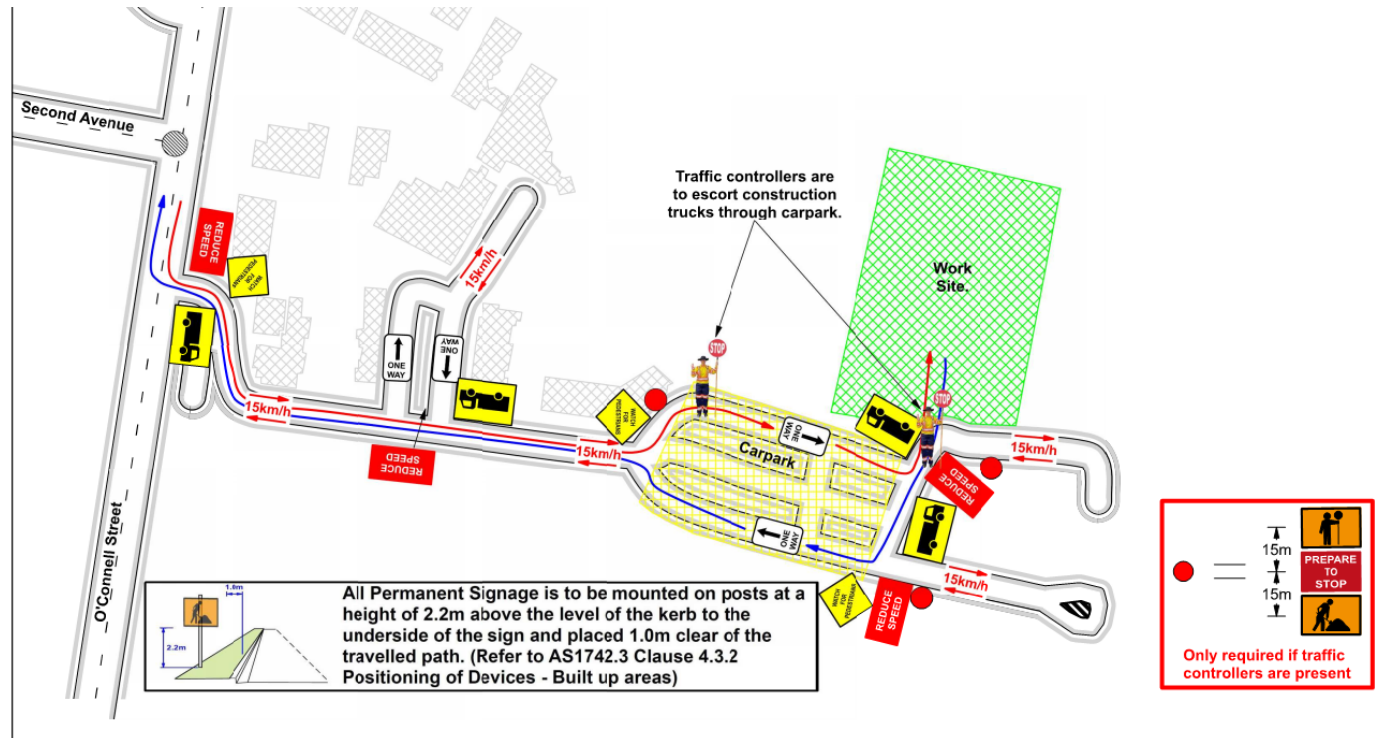
## Traffic movement through Western Sydney University Werrington South Campus

	Monday 6/06/2022	Tuesday 7/06/2022	Wednesday 8/06/2022	Thursday 9/06/2022	Friday 10/06/2022	Saturday 11/06/2022
<b>Description of Work Activities</b>	Installation of scaffold frames for UGF pour 1, install pre-fabricated columns, place pre-fabricated shutters to retaining wall, prepare lift core walls for concrete, continue service trenching	Installation of scaffold frames for UGF pour 1, install pre-fabricated columns, place pre-fabricated shutters to retaining wall, pour lift core walls and retaining wall shutters, continue service trenching	Strip walls and shutters, continue scaffold decking and service trenching	Placement of retaining wall shutters, continue formwork and reinforcement and service trenching	Placement of retaining wall shutters, continue formwork and reinforcement and service trenching	No works due to public holiday
<b>Standing Traffic Control</b>	Not required	Not required	Not required	Not required	Not required	Not Required
<b>07.00am</b>						
<b>08.00am</b>						
<b>09.00am</b>						
<b>10.00am</b>						
<b>11.00am</b>						
<b>12.00pm</b>	Deliveries of material expected throughout the day	Concrete trucks and delivery of materials expected throughout the day	Deliveries of material expected throughout the day	Concrete trucks and material deliveries expected. ADCO guide vehicles will be in motion.	Delivery of materials expected throughout the day	No works due to public holiday
<b>01.00pm</b>						
<b>02.00pm</b>						
<b>03.00pm</b>						
<b>04.00pm</b>						
<b>05.00pm</b>						
<b>06.00pm</b>						



# TAFE NSW NEPEAN – KINGSWOOD CAMPUS TRAFFIC PLAN

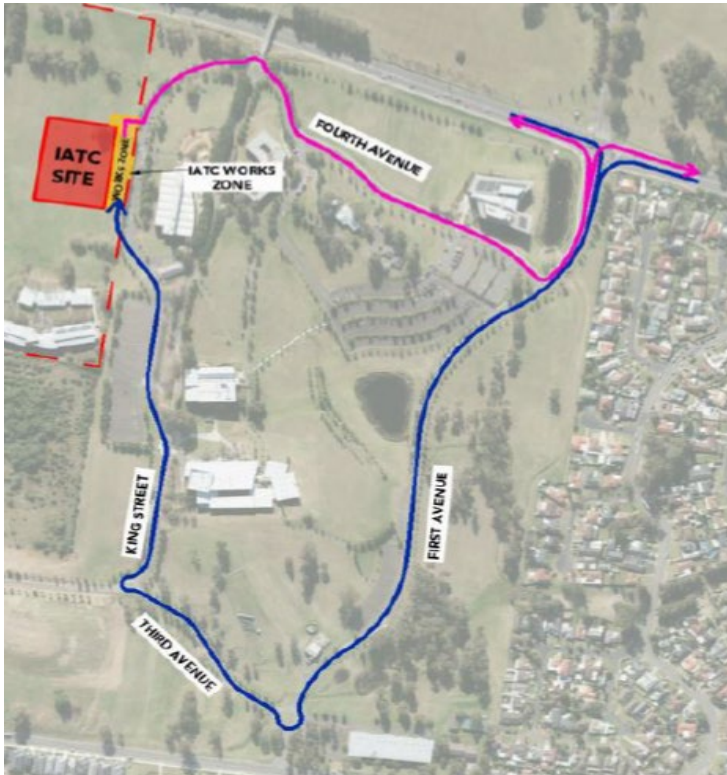
## TAFE NSW Nepean - Kingswood Campus Specific Risk Assessment and Traffic Control Plan



Truck Access Route and Site Plan

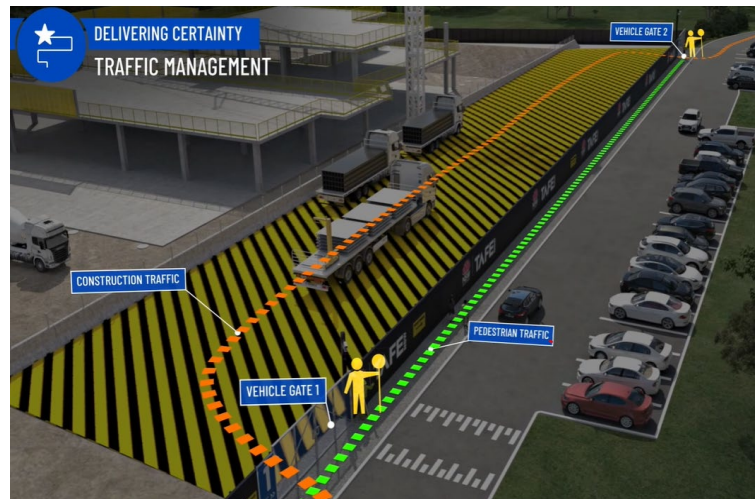
# CONSTRUCTION TRAFFIC ROUTE AND SITE ACCESS

## WESTERN SYDNEY UNIVERSITY WERRINGTON SOUTH



Blue = Construction traffic entry  
Pink = Construction traffic exit

Traffic control will be in place (as required) between:  
7am and 6pm Monday-Friday  
8am and 4pm Saturdays



IATC Construction site entry and exit



All construction vehicles will enter and exit the WSU Werrington South Campus in a controlled manner.

All construction vehicle parking will be maintained within the site compound with entry and exit through TAFE NSW Nepean Kingswood Campus.

No WSU parking will be affected due to the construction.



## KEY CONTACTS

For key project updates and information about the Institute of Applied Technology for Construction please visit the project website at

- [IATC project website](#)
- Phone: [1800 752 142](tel:1800752142)
- Email: [iat@tafensw.edu.au](mailto:iat@tafensw.edu.au)

**For all project related questions, concerns or complaints please contact:**

Cameron Lang, TAFE NSW Investment Project Director at  
[cameron.lang2@tafensw.edu.au](mailto:cameron.lang2@tafensw.edu.au) or 0408 406 919.

**For all day to day construction related question please contact:**

Pierce Brennan, ADCO Construction Senior Project Manager on 0419 422 566

Simon Brown, ADCO Construction Site Manager on 0419 012 704

Mitch Alexander, TAFE NSW Senior Project Manager (Ernst & Young) on 0428 440 555