

TAFENSW

IATC WEEKLY CONSTRUCTION STATUS UPDATE

INSTITUTE OF APPLIED TECHNOLOGY
CONSTRUCTION (IATC)

24 June 2022

CONTINUATION OF CLEAR SKY

Great progress has been seen again this week with a successful large concrete pour and the continuation of formwork and steel reinforcements to the upper ground floor deck. With the news that La Nina has passed we should see the momentum on site continue and building envelope take shape.



Active site photo

OUR IATC ROADMAP



IATC Open
For
Business



Q3 2021

Q4 2021

Q1 2022

Q2 2022

Q3 2022

Q4 2022

Q1 2023

**Contractor RTA
and
First Partner
Workshop**

1

2

**Collaboration Agreements
and Construction**

- Collaboration Agreements signed by Uni & principal industry partner
- Building construction commences

3

Education Model

Education Model agreed by all partners

4

Operating Model

- Operating Model developed
- Product development
- Workforce planning
- Op Readiness plan refined

5

Marketing Campaign

IATC Marketing Campaign begins ahead of enrolment period

6

7

**Operational
Readiness**

Preparation for IAT opening

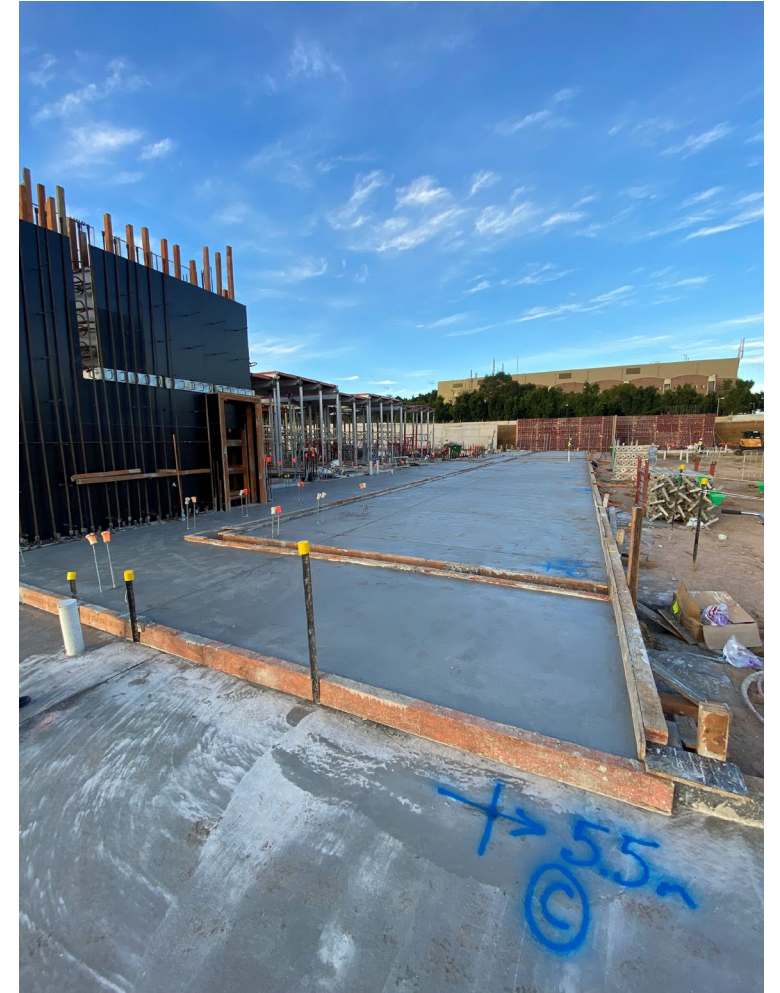
**Construction
Complete March 2023**

Construction complete and ready for handover to business

We are here

HIGHLIGHTS AND ACHIEVEMENTS (WE 25/06/22)

- Eastern retaining wall shutter placement continued, poured and continuation of footing
- Large concrete pour to lower ground floor and preparation for further concrete pours
- High strutted formwork for upper ground floor deck continued and preparation/placement of steel reinforcement well underway
- Placement of formwork safety screens continued
- Building services design continued
- Extension of contractor site parking commence to accommodate additional trades vehicles



Large lower ground concrete pour

SITE PHOTOGRAPHS (WE 25/06/22)



Site photo



Eastern retaining wall



Central Atrium void

NEXT STEPS (27/06 – 02/07/2022)

- Continue formwork and steel reinforcements to retaining wall footings, lift core, stair core 2 and columns and upper ground floor deck
- Target upper ground floor deck concrete for scheduled mid-week
- Continue placing and pouring retaining wall shutters
- Continue preparation for further concrete pours
- Continue contractor parking extension
- Commence Gate 2 upgrade works



Upper ground floor formworks and reinforcements

COVID 19 MANAGEMENT PLAN

- COVID 19 controls maintained on site
- ADCO and Government Sign in at entry
- SafeWork NSW Management Plans updated
- Awareness signage increased around site
- Scheduled lunch break cycles
- Full time cleaning crew
- Limiting unnecessary site visits
- Project Team Resilience Plan in place



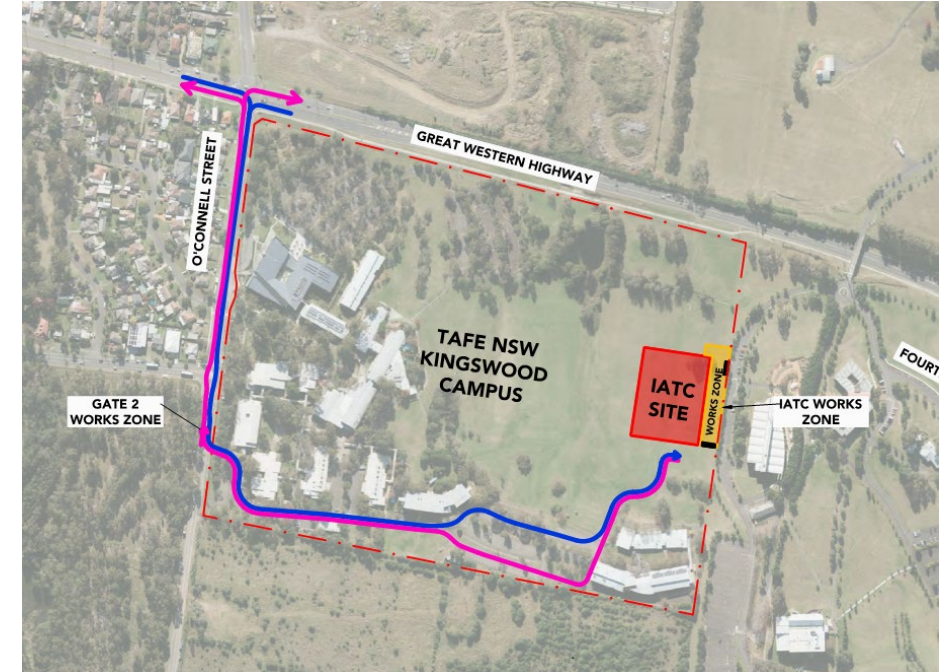
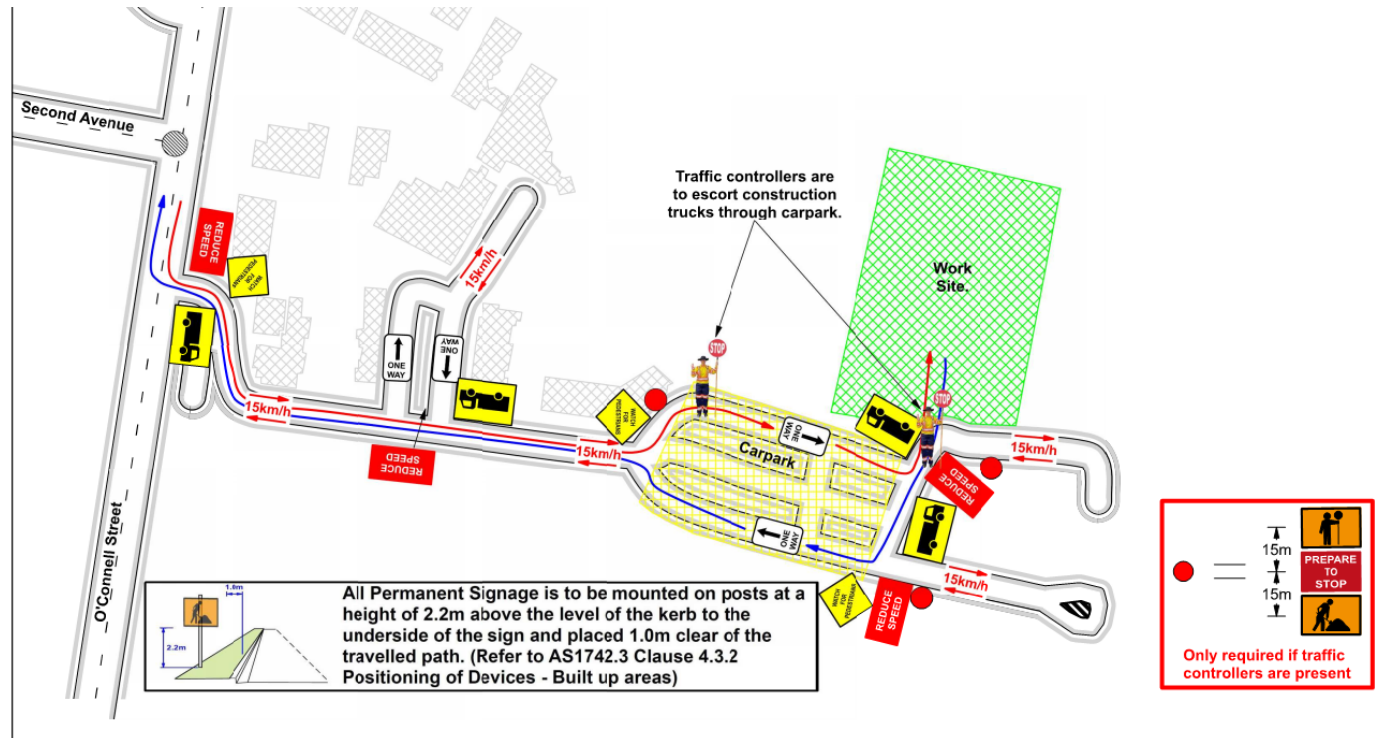
TRAFFIC MOVEMENTS (WC 27/06/22)

Traffic movement through Western Sydney University Werrington South Campus

	Monday 27/06/2022	Tuesday 28/06/2022	Wednesday 29/06/2022	Thursday 30/06/2022	Friday 1/07/2022	Saturday 2/07/2022
Description of Work Activities	Formwork and steel placement and ground work preparation for scheduled concrete pours	Formwork and steel placement and ground work preparation for scheduled concrete pours	Upper ground floor concrete pour	Upper ground floor concrete pour	Formwork and steel placement and ground work preparation for scheduled concrete pours	Continue formwork, services and steel reinforcements
Standing Traffic Control	Not required	Not required	Not required	Not required	Required	Not Required
07.00am						
08.00am						
09.00am						
10.00am						
11.00am						
12.00pm	Deliveries of material expected throughout the day	Approximately 2 concrete truck deliveries expected and deliveries of material expected throughout the day	Approximately 11 concrete truck deliveries expected	Approximately 11 concrete truck deliveries expected	Deliveries of material expected throughout the day	Deliveries of material expected throughout the day
01.00pm						
02.00pm						
03.00pm						
04.00pm						
05.00pm						
06.00pm						

TAFE NSW NEPEAN – KINGSWOOD CAMPUS TRAFFIC PLAN

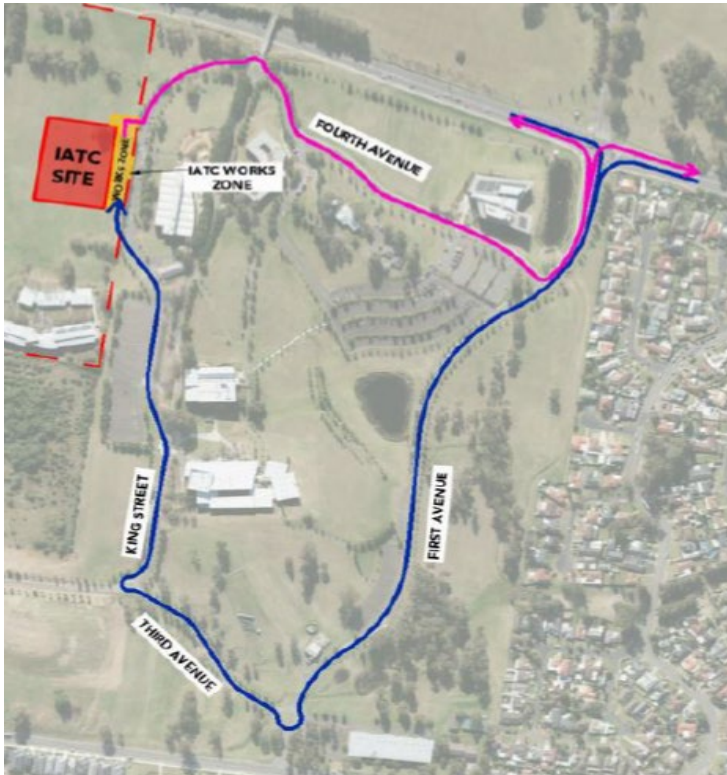
TAFE NSW Nepean - Kingswood Campus Specific Risk Assessment and Traffic Control Plan



Truck Access Route and Site Plan

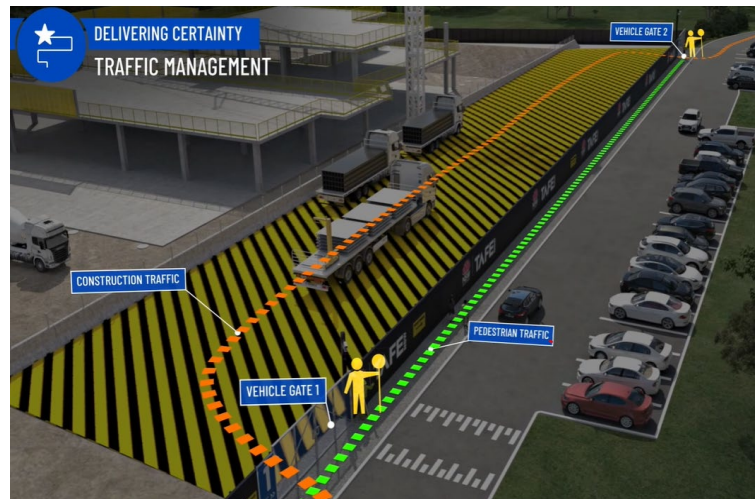
CONSTRUCTION TRAFFIC ROUTE AND SITE ACCESS

WESTERN SYDNEY UNIVERSITY WERRINGTON SOUTH



Blue = Construction traffic entry
Pink = Construction traffic exit

Traffic control will be in place (as required) between:
7am and 6pm Monday-Friday
8am and 4pm Saturdays



IATC Construction site entry and exit



All construction vehicles will enter and exit the WSU Werrington South Campus in a controlled manner.

All construction vehicle parking will be maintained within the site compound with entry and exit through TAFE NSW Nepean Kingswood Campus.

No WSU parking will be affected due to the construction.

KEY CONTACTS

For key project updates and information about the Institute of Applied Technology for Construction please visit the project website at

- [IATC project website](#)
- Phone: [1800 752 142](tel:1800752142)
- Email: iat@tafensw.edu.au

For all project related questions, concerns or complaints please contact:

Cameron Lang, TAFE NSW Investment Project Director at
cameron.lang2@tafensw.edu.au or 0408 406 919.

For all day to day construction related question please contact:

Pierce Brennan, ADCO Construction Senior Project Manager on 0419 422 566

Simon Brown, ADCO Construction Site Manager on 0419 012 704

Mitch Alexander, TAFE NSW Senior Project Manager (Ernst & Young) on 0428 440 555