

TAFENSW

IATC WEEKLY CONSTRUCTION STATUS UPDATE

INSTITUTE OF APPLIED TECHNOLOGY
CONSTRUCTION (IATC)

1 July 2022

CONTINUATION OF CLEAR SKY WITH EXPECTED RAIN

Great progress has been seen again this week with a successful large concrete pour to the upper ground floor deck on Wednesday with another scheduled for Saturday. This as a fantastic milestone for the project as we are now truly up and out of the ground. The Eastern retaining wall also progressed along with preparation for further lower ground floor concrete pours. The looming rain has everyone on edge so let's hope it's only a shower or two.



Active site photo

OUR IATC ROADMAP



**IATC Open
For
Business**



Q3 2021

Q4 2021

Q1 2022

Q2 2022

Q3 2022

Q4 2022

Q1 & Q2 2023

**Contractor RTA
and
First Partner
Workshop**

1

2

**Collaboration Agreements
and Construction**

- Collaboration Agreements signed by Uni & principal industry partner
- Building construction commences

Education Model

Education Model agreed by all partners

3

4

Operating Model

- Operating Model developed
- Product development
- Workforce planning
- Op Readiness plan refined

Marketing Campaign

IATC Marketing Campaign begins ahead of enrolment period

5

**Commence Operational
Readiness**

Preparation for IAT opening

6

**Construction
Complete March 2023**

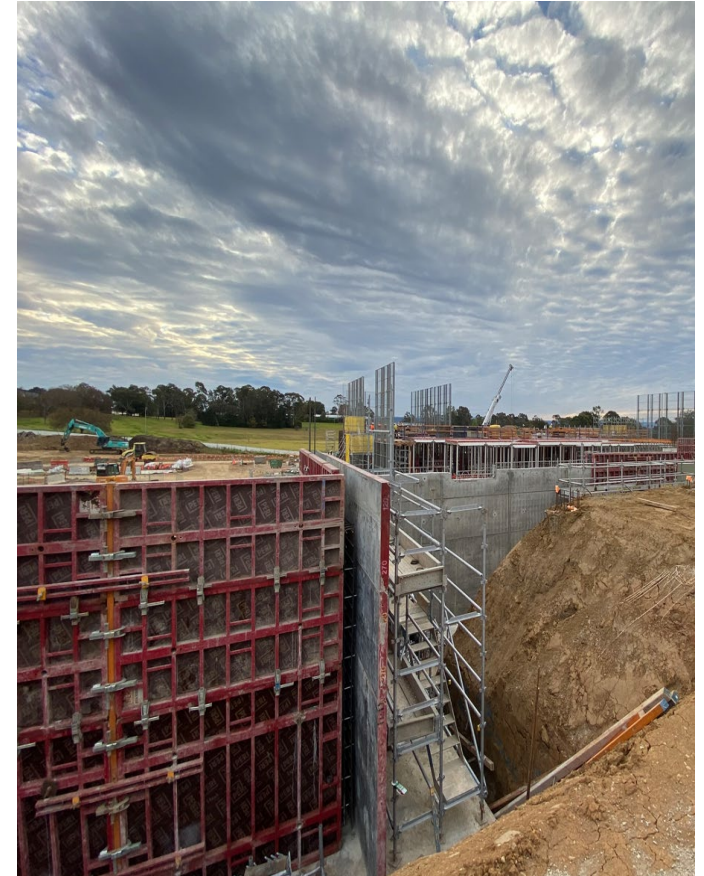
- Building handover end April
- Ready for business end May
- Multi-trades operations commence Day 1 Semester 2

7

We are here

HIGHLIGHTS AND ACHIEVEMENTS (WE 02/07/22)

- Eastern retaining wall shutter placement continued, poured and continuation of footing
- Large concrete pour to upper ground floor deck and preparation for further concrete pours
- High strutted formwork for upper ground floor deck continued and preparation/placement of steel reinforcement continued
- Placement of formwork safety screens continued
- Building services design continued
- Extension of contractor site parking continued to accommodate additional trades vehicles



Eastern retaining wall return

SITE PHOTOGRAPHS (WE 02/07/22)



Me and my Project Managers from EY standing on the new upper ground floor. A very exciting moment.



Upper ground floor



Eastern retaining wall waterproofing underway



Upper ground floor



Lower ground floor concrete pour preparation

NEXT STEPS (04/07 – 09/07/2022)

- Continue formwork and steel reinforcements to retaining wall footings, lower ground floor, lift core, stair core 1 and 2, columns and upper ground floor deck
- Target upper ground and lower ground floor concrete pours
- Continue placing and pouring retaining wall shutters
- Continue waterproofing
- Continue contractor parking extension
- Commence Gate 2 upgrade works



Eastern retaining wall

COVID 19 MANAGEMENT PLAN

- COVID 19 controls maintained on site
- ADCO and Government Sign in at entry
- SafeWork NSW Management Plans updated
- Awareness signage increased around site
- Scheduled lunch break cycles
- Full time cleaning crew
- Limiting unnecessary site visits
- Project Team Resilience Plan in place



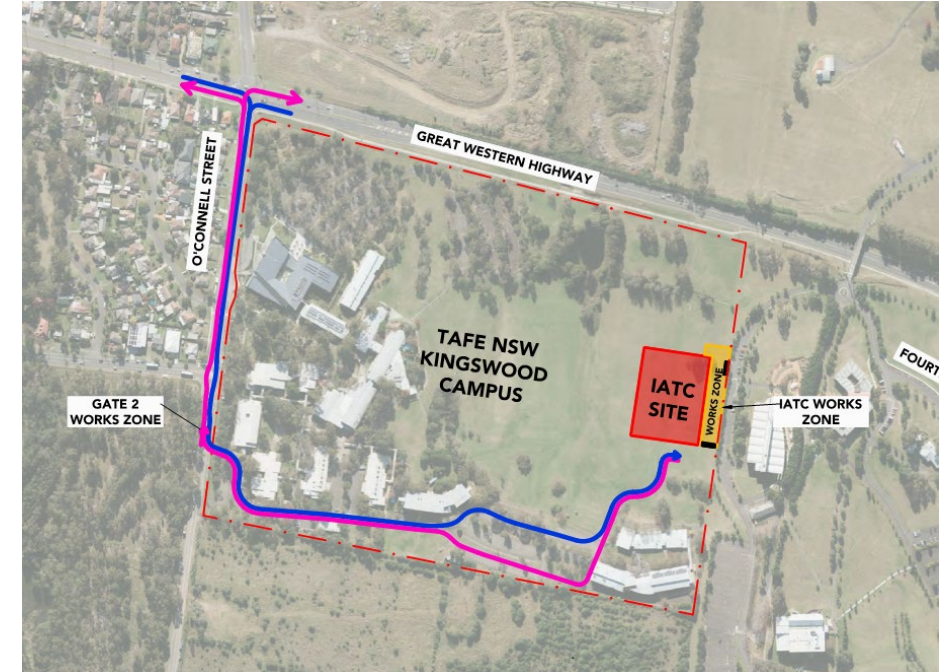
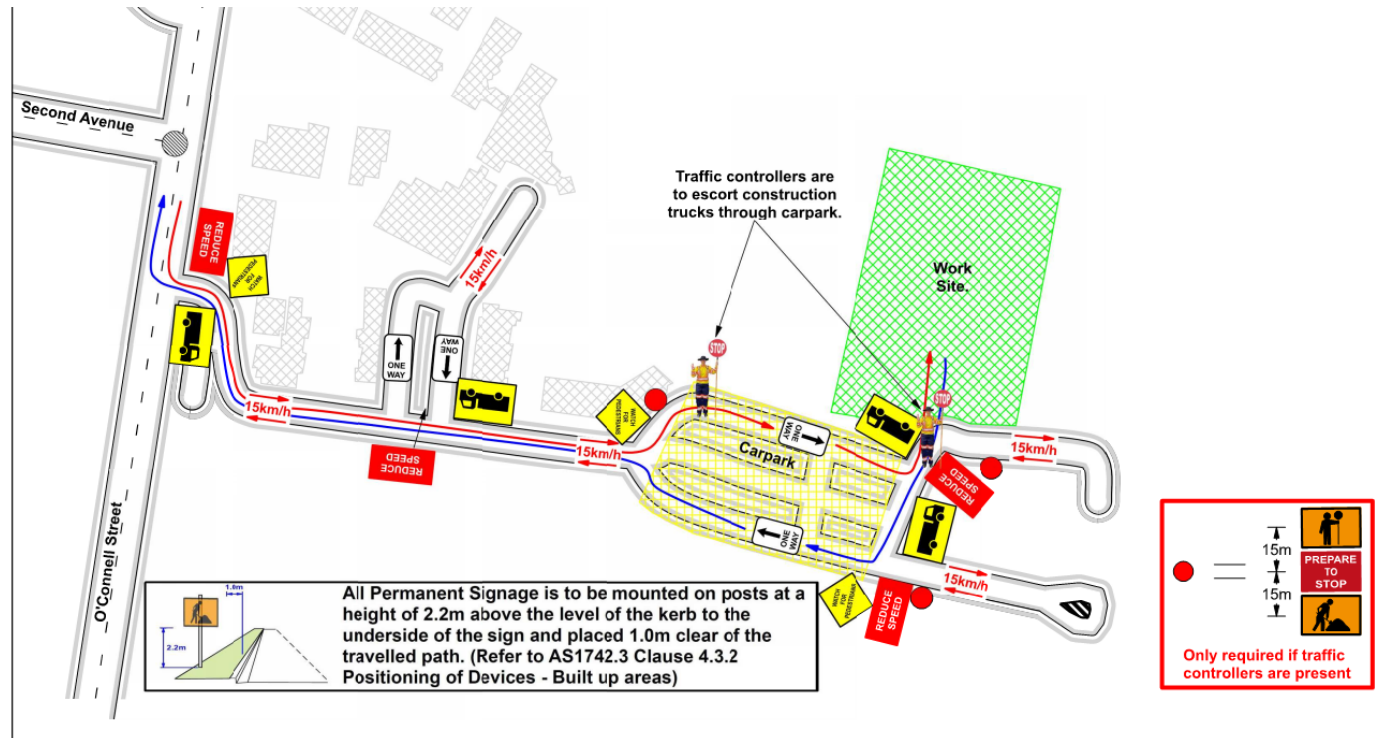
TRAFFIC MOVEMENTS (WC 04/07/22)

Traffic movement through Western Sydney University Werrington South Campus

	Monday 4/07/2022	Tuesday 5/07/2022	Wednesday 6/07/2022	Thursday 7/07/2022	Friday 8/07/2022	Saturday 9/07/2022
Description of Work Activities	Formwork and steel placement preparation, retaining wall and Gate 2 works	Formwork and steel placement preparation, retaining wall, columns, waterproofing and Gate 2 works	Formwork and steel placement preparation, retaining wall and Gate 2 works	Formwork and steel placement preparation, retaining wall and Gate 2 works	Formwork and steel placement preparation, retaining wall and Gate 2 works	Formwork and steel placement preparation, retaining wall and Gate 2 works
Standing Traffic Control	Not required	Not required	Not required	Not required	Required	Not Required
07.00am						
08.00am						
09.00am						
10.00am						
11.00am						
12.00pm	Deliveries of material expected throughout the day	Approximately 4 concrete truck deliveries expected	Deliveries of material expected throughout the day	Deliveries of material expected throughout the day	Deliveries of material expected throughout the day	Deliveries of material expected throughout the day
01.00pm						
02.00pm						
03.00pm						
04.00pm						
05.00pm						
06.00pm						

TAFE NSW NEPEAN - KINGSWOOD CAMPUS TRAFFIC PLAN

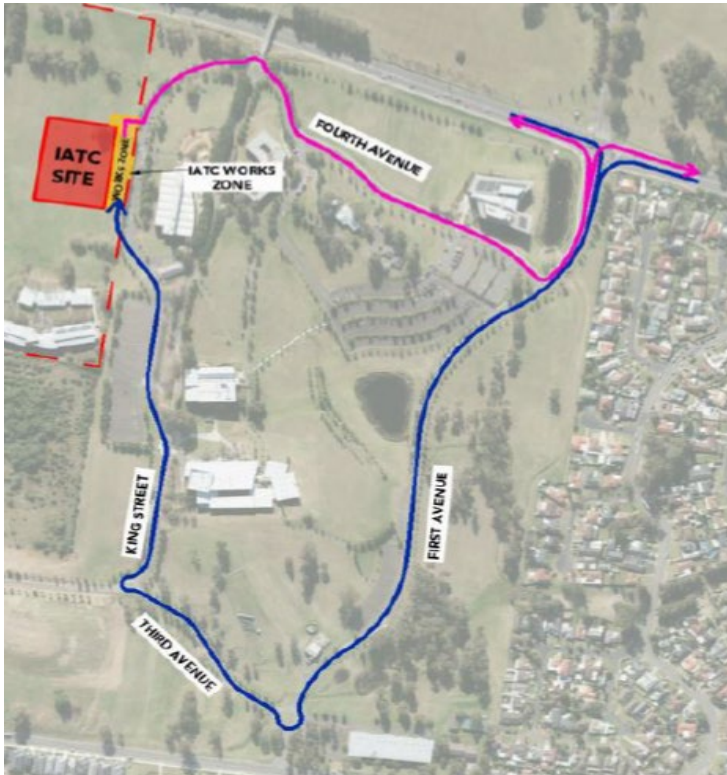
TAFE NSW Nepean - Kingswood Campus Specific Risk Assessment and Traffic Control Plan



Truck Access Route and Site Plan

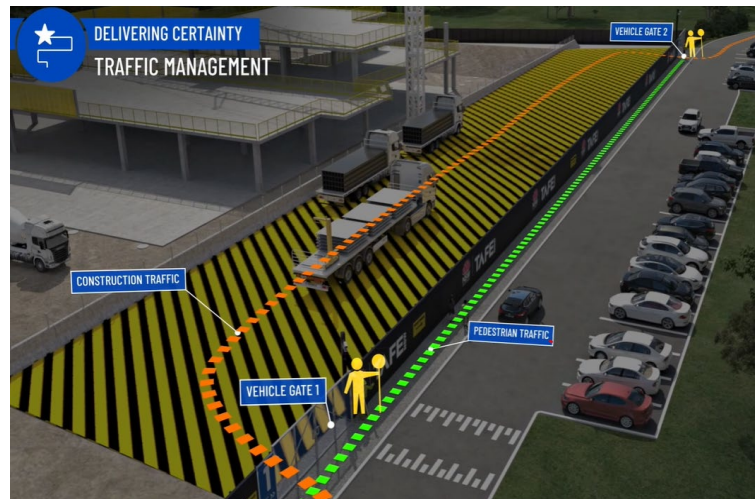
CONSTRUCTION TRAFFIC ROUTE AND SITE ACCESS

WESTERN SYDNEY UNIVERSITY WERRINGTON SOUTH



Blue = Construction traffic entry
Pink = Construction traffic exit

Traffic control will be in place (as required) between:
7am and 6pm Monday-Friday
8am and 4pm Saturdays



IATC Construction site entry and exit



All construction vehicles will enter and exit the WSU Werrington South Campus in a controlled manner.

All construction vehicle parking will be maintained within the site compound with entry and exit through TAFE NSW Nepean Kingswood Campus.

No WSU parking will be affected due to the construction.

KEY CONTACTS

For key project updates and information about the Institute of Applied Technology for Construction please visit the project website at

- [IATC project website](#)
- Phone: [1800 752 142](tel:1800752142)
- Email: iat@tafensw.edu.au

For all project related questions, concerns or complaints please contact:

Cameron Lang, TAFE NSW Investment Project Director at
cameron.lang2@tafensw.edu.au or 0408 406 919.

For all day to day construction related question please contact:

Pierce Brennan, ADCO Construction Senior Project Manager on 0419 422 566

Simon Brown, ADCO Construction Site Manager on 0419 012 704

Mitch Alexander, TAFE NSW Senior Project Manager (Ernst & Young) on 0428 440 555