

TAFENSW

IATC WEEKLY CONSTRUCTION STATUS UPDATE

INSTITUTE OF APPLIED TECHNOLOGY
CONSTRUCTION (IATC)

8 July 2022

WHO SAID LA NINA WAS OVER.....

Unfortunately this week has been much of a write off due to the deluge of rain and high winds experienced across Sydney. The Western Sydney region appeared to bear the brunt of the rain, seeing more flooding and evacuations in many areas.

Our scheduled second concrete pour for the upper ground floor was cancelled last Saturday. The ADCO site team began to drain the site of severe water ponding and managed to successfully complete another concrete pour on Thursday to an area of the lower ground floor scheduled for the previous Saturday. Scaffold screens and form working continued today with the second upper ground floor concrete pour schedule for tomorrow (Saturday 9 July 2022).



Active site photo 4 July 2022

OUR IATC ROADMAP



**IATC Open
For
Business**



Q3 2021

Q4 2021

Q1 2022

Q2 2022

Q3 2022

Q4 2022

Q1 & Q2 2023

**Contractor RTA
and
First Partner
Workshop**

1

2

**Collaboration Agreements
and Construction**

- Collaboration Agreements signed by Uni & principal industry partner
- Building construction commences

3

Education Model

Education Model agreed by all partners

4

Operating Model

- Operating Model developed
- Product development
- Workforce planning
- Op Readiness plan refined

5

Marketing Campaign

IATC Marketing Campaign begins ahead of enrolment period

6

**Commence Operational
Readiness**

Preparation for IAT opening

7

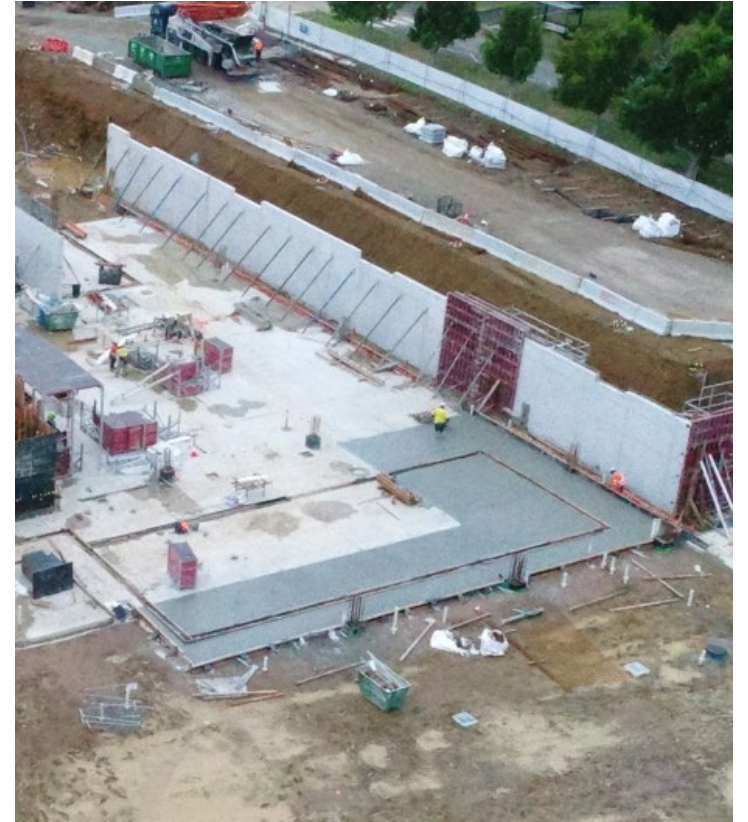
**Construction
Complete March 2023**

- Building handover end April
- Ready for business end May
- Multi-trades operations commence Day 1 Semester 2

We are here

HIGHLIGHTS AND ACHIEVEMENTS (WE 09/07/22)

- Dewatering of the site after heavy rainfall
- Geotechnical inspections of site cuts and site internal road network
- Concrete pour to lower ground floor
- Placement of formwork safety screens continued
- Large concrete pour No.2 for the upper ground floor scheduled for Saturday 9 July 2022
- Procurement of construction materials, plant and equipment
- Building services design coordination continued



Lower ground floor concrete pour
(dark grey) and Eastern retaining wall

SITE PHOTOGRAPHS (WE 09/07/22)



Site photo showing progression of upper ground floor deck



Erection of formwork perimeter safety screens

NEXT STEPS (11/07 – 16/07/2022)

- Movement of excess spoil around the site
- Continue contractor parking extension
- Continue placement of formwork and steel reinforcements for future concrete pours
- Continue placing and pouring retaining wall shutters
- Continue waterproofing
- Continue Gate 2 upgrade works



Eastern retaining wall

COVID 19 MANAGEMENT PLAN

- COVID 19 controls maintained on site
- ADCO and Government Sign in at entry
- SafeWork NSW Management Plans updated
- Awareness signage increased around site
- Scheduled lunch break cycles
- Full time cleaning crew
- Limiting unnecessary site visits
- Project Team Resilience Plan in place



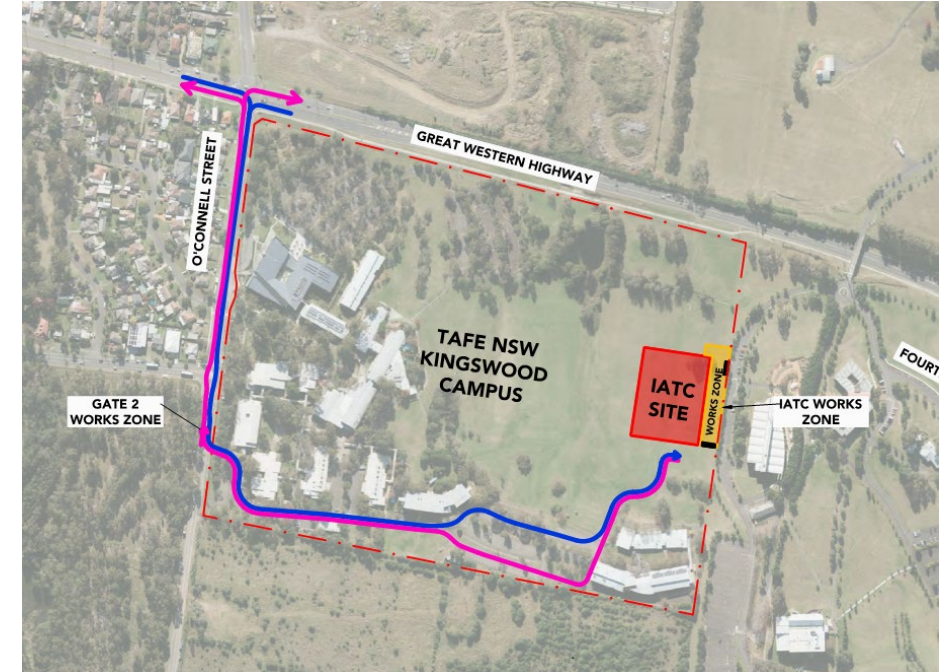
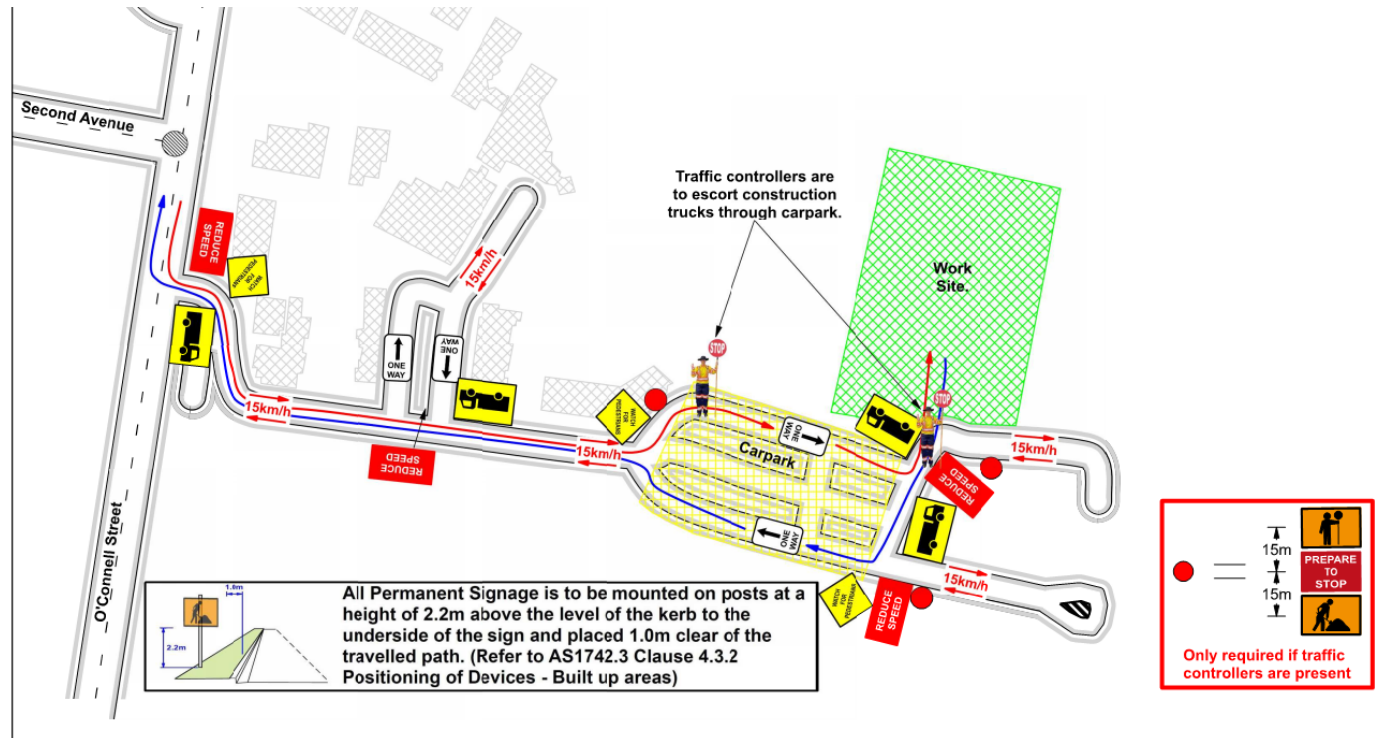
TRAFFIC MOVEMENTS (WC 11/07/22)

Traffic movement through Western Sydney University Werrington South Campus

	Monday 11/07/2022	Tuesday 12/07/2022	Wednesday 13/07/2022	Thursday 14/07/2022	Friday 15/07/2022	Saturday 16/07/2022
Description of Work Activities	Scheduled Rostered Day Off (RDO) ADCO staff may still be in attendance	Formwork and steel placement, retaining wall, columns, waterproofing and Gate 2 works	Formwork and steel placement, retaining wall, columns, waterproofing, Gate 2 works and back-filling to Eastern retaining wall	Concrete placement to various areas, formwork and steel placement, back-filling retaining wall, bulk excavation works and Gate 2 works	Concrete placement to various areas, formwork and steel placement, back-filling retaining wall, bulk excavation works and Gate 2 works	Complete back-filling to Eastern retaining wall, formwork and steel placement, and concrete to retaining wall footing
Standing Traffic Control	Not required	Not required	Not required	Not required	Required	Not Required
07.00am						
08.00am						
09.00am						
10.00am						
11.00am						
12.00pm	Deliveries of material expected throughout the day	Approximately 4 concrete truck deliveries expected	Deliveries of material expected throughout the day	Multiple concrete trucks and delivery of material expected throughout the day	Multiple concrete trucks and delivery of material expected throughout the day	Multiple concrete trucks and delivery of material expected throughout the day
01.00pm						
02.00pm						
03.00pm						
04.00pm						
05.00pm						
06.00pm						

TAFE NSW NEPEAN – KINGSWOOD CAMPUS TRAFFIC PLAN

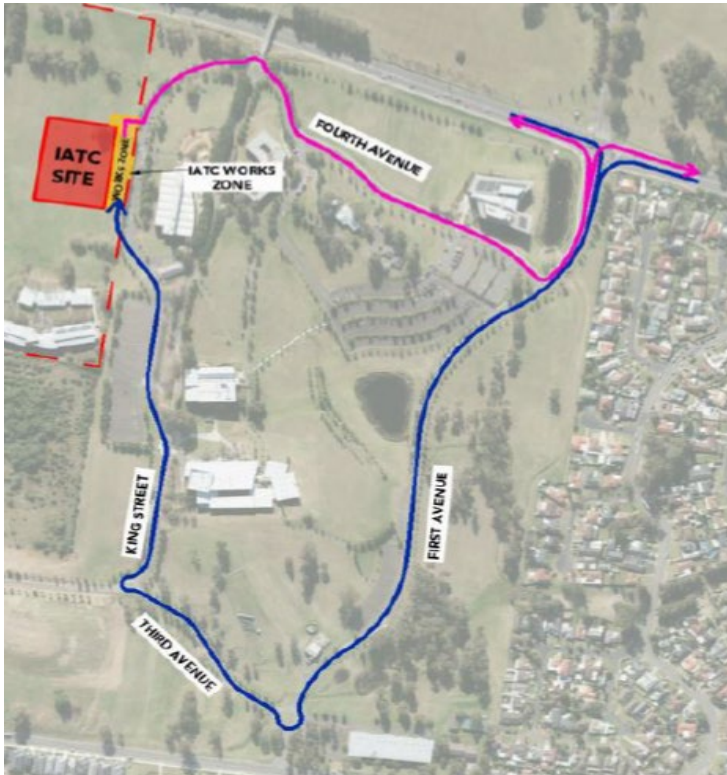
TAFE NSW Nepean - Kingswood Campus Specific Risk Assessment and Traffic Control Plan



Truck Access Route and Site Plan

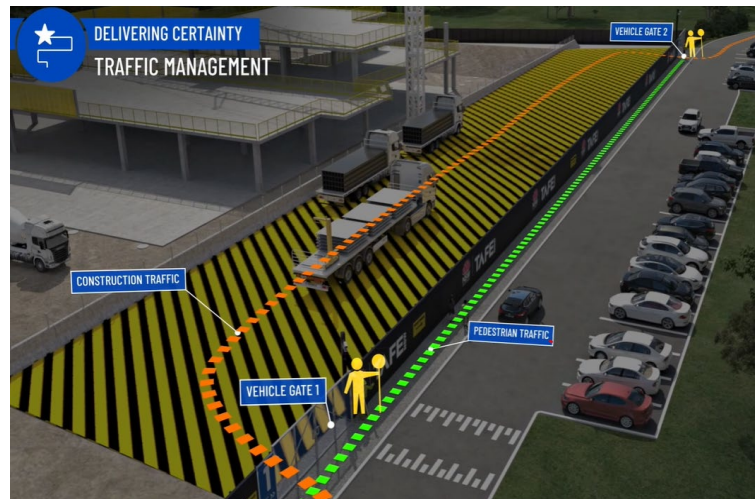
CONSTRUCTION TRAFFIC ROUTE AND SITE ACCESS

WESTERN SYDNEY UNIVERSITY WERRINGTON SOUTH



Blue = Construction traffic entry
Pink = Construction traffic exit

Traffic control will be in place (as required) between:
7am and 6pm Monday-Friday
8am and 4pm Saturdays



IATC Construction site entry and exit



All construction vehicles will enter and exit the WSU Werrington South Campus in a controlled manner.

All construction vehicle parking will be maintained within the site compound with entry and exit through TAFE NSW Nepean Kingswood Campus.

No WSU parking will be affected due to the construction.

KEY CONTACTS

For key project updates and information about the Institute of Applied Technology for Construction please visit the project website at

- [IATC project website](#)
- Phone: [1800 752 142](tel:1800752142)
- Email: iat@tafensw.edu.au

For all project related questions, concerns or complaints please contact:

Cameron Lang, TAFE NSW Investment Project Director at
cameron.lang2@tafensw.edu.au or 0408 406 919.

For all day to day construction related question please contact:

Pierce Brennan, ADCO Construction Senior Project Manager on 0419 422 566

Simon Brown, ADCO Construction Site Manager on 0419 012 704

Mitch Alexander, TAFE NSW Senior Project Manager (Ernst & Young) on 0428 440 555