

**TAFE**NSW

## **IATC WEEKLY CONSTRUCTION STATUS UPDATE**

INSTITUTE OF APPLIED TECHNOLOGY  
**CONSTRUCTION (IATC)**

22 July 2022



## RAIN AGAIN

Each week has its challenges... This one started with sunshine, but quickly turned to rain and wind. ADCO Constructions and their trades are working hard to keep things moving in difficult working conditions. With every workers safety at the forefront of daily activities, the site team have managed to continue forming and detailing the lower ground floor deck, erect more safety screens, commence forming the level one deck, commence stripping out the lower ground floor formwork, whilst pouring capping beams and detailing civil works in readiness for shotcrete. The Gate 2 entry upgrade works are well advanced and starting really take shape.



Active site photo 21 July 2022

# OUR IATC ROADMAP



**IATC Open  
For  
Business**



**Q3 2021**

**Q4 2021**

**Q1 2022**

**Q2 2022**

**Q3 2022**

**Q4 2022**

**Q1 & Q2 2023**

**Contractor RTA  
and  
First Partner  
Workshop**

1

2

**Collaboration Agreements  
and Construction**

- Collaboration Agreements signed by Uni & principal industry partner
- Building construction commences

**Education Model**

Education Model agreed by all partners

3

4

**Operating Model**

- Operating Model developed
- Product development
- Workforce planning
- Op Readiness plan refined

**Marketing Campaign**

IATC Marketing Campaign begins ahead of enrolment period

5

**Commence Operational  
Readiness**

Preparation for IAT opening

6

**Construction  
Complete March 2023**

- Building handover end April
- Ready for business end May
- Multi-trades operations commence Day 1 Semester 2

7

**We are here**



## HIGHLIGHTS AND ACHIEVEMENTS (WE 23/07/22)

- Dewatering of the site after heavy rainfall
- Placement of formwork safety screens continued
- Continuation of formwork and detailing for upper ground floor deck
- Commencement of formwork and detailing for level one deck and stair core walls
- Pouring and civil detailing of capping beams
- Procurement of construction materials, plant and equipment
- Building services design coordination continued
- Gate 2 works continued
- 550m of new sewer line installed



Strip out of formwork to lower ground

# SITE PHOTOGRAPHS (WE 23/07/22)



Upper ground floor deck



Level one deck and stair core walls



Gate 2 entry works – widening, curb and gutter



## NEXT STEPS (25/07 – 30/07/2022)

- Commence placement of steel reinforcement to the upper ground floor deck
- Continue forming the level one deck
- Continue backfilling Eastern retaining wall
- Place concrete to stair core 1
- Continue Gate 2 upgrade works
- Continue detailing capping beams and commence shotcrete
- Continue procurement of construction materials, plant and equipment



Civil detailing of capping beam in readiness for shotcrete

# COVID 19 MANAGEMENT PLAN

- COVID 19 controls maintained on site
- ADCO and Government Sign in at entry
- SafeWork NSW Management Plans updated
- Awareness signage increased around site
- Scheduled lunch break cycles
- Full time cleaning crew
- Limiting unnecessary site visits
- Project Team Resilience Plan in place



# TRAFFIC MOVEMENTS (WC 25/07/22)

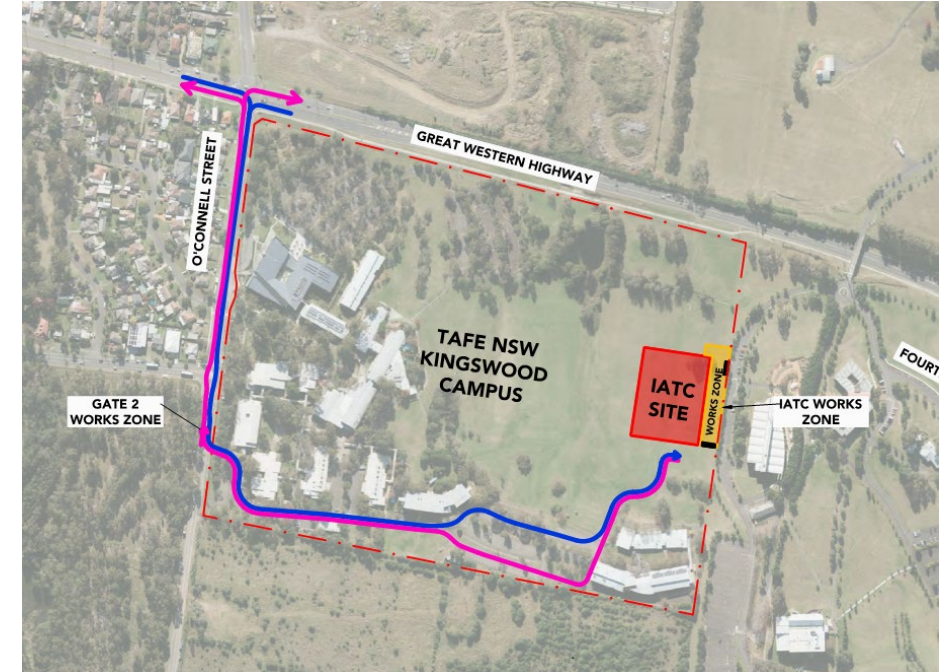
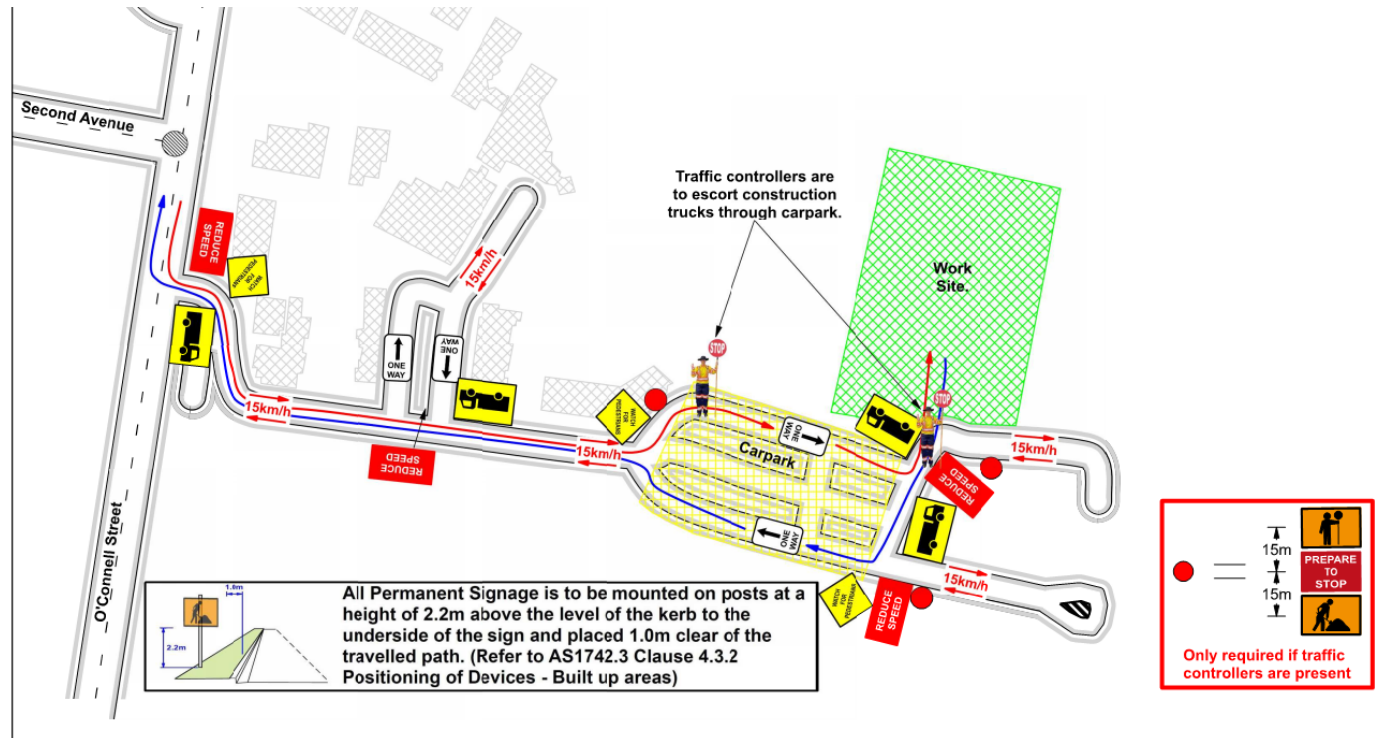
## Traffic movement through Western Sydney University Werrington South Campus

	Monday 25/07/2022	Tuesday 26/07/2022	Wednesday 27/07/2022	Thursday 28/07/2022	Friday 29/07/2022	Saturday 30/07/2022
Description of Work Activities	Backfilling Eastern retaining wall, formwork and reinforcements, continue sewer connection and Gate 2 works	Backfilling Eastern retaining wall, formwork and reinforcements, bulk excavation, Gate 2 works and concrete to stair core 1 walls	Backfilling Eastern retaining wall, formwork and reinforcements, stripping formwork, Gate 2 works and capping beam works	Continue formwork and reinforcements, stripping formwork, Gate 2 works and inground services near northern piling	Continue formwork and reinforcements, stripping formwork, Gate 2 works and inground services near northern piling	Continue formwork and reinforcements, stripping formwork, Gate 2 works and inground services near northern piling
Standing Traffic Control	Not required	Not required	Not required	Not required	Required	Not Required
07.00am						
08.00am						
09.00am						
10.00am						
11.00am						
12.00pm	Deliveries of material expected throughout the day	Approximately 3 concrete truck deliveries expected and material deliveries throughout the day	Deliveries of material expected throughout the day	Deliveries of material expected throughout the day	Deliveries of material expected throughout the day	Deliveries of material expected throughout the day
01.00pm						
02.00pm						
03.00pm						
04.00pm						
05.00pm						
06.00pm						



# TAFE NSW NEPEAN – KINGSWOOD CAMPUS TRAFFIC PLAN

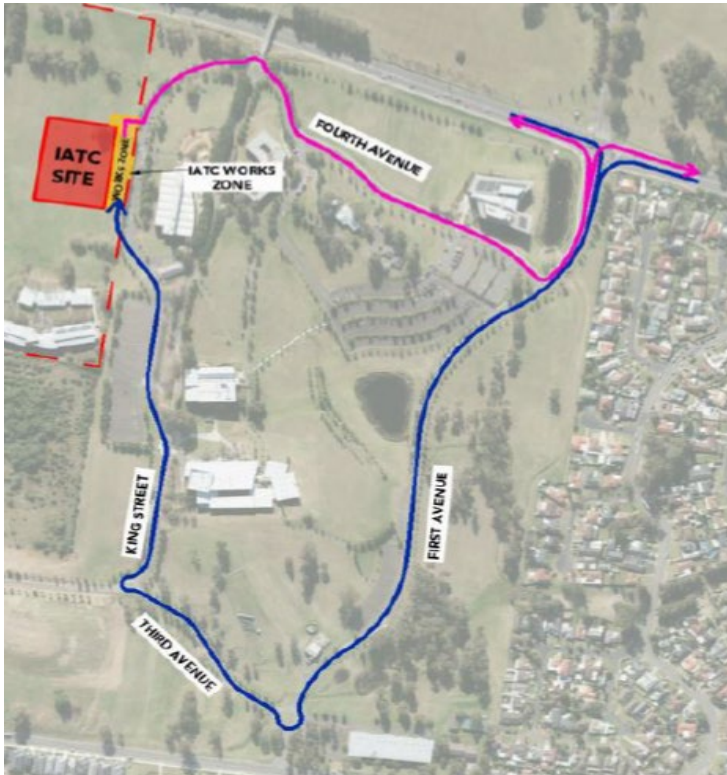
## TAFE NSW Nepean - Kingswood Campus Specific Risk Assessment and Traffic Control Plan



Truck Access Route and Site Plan

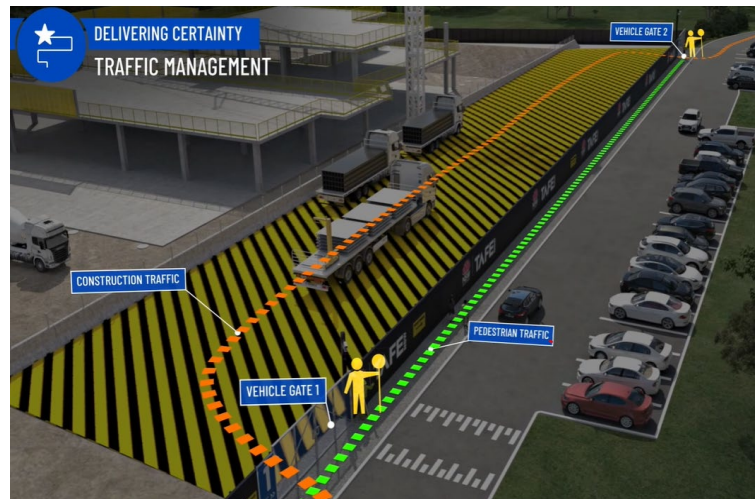
# CONSTRUCTION TRAFFIC ROUTE AND SITE ACCESS

## WESTERN SYDNEY UNIVERSITY WERRINGTON SOUTH



Blue = Construction traffic entry  
Pink = Construction traffic exit

Traffic control will be in place (as required) between:  
7am and 6pm Monday-Friday  
8am and 4pm Saturdays



IATC Construction site entry and exit



All construction vehicles will enter and exit the WSU Werrington South Campus in a controlled manner.

All construction vehicle parking will be maintained within the site compound with entry and exit through TAFE NSW Nepean Kingswood Campus.

No WSU parking will be affected due to the construction.



## KEY CONTACTS

For key project updates and information about the Institute of Applied Technology for Construction please visit the project website at

- [IATC project website](#)
- Phone: [1800 752 142](tel:1800752142)
- Email: [iat@tafensw.edu.au](mailto:iat@tafensw.edu.au)

**For all project related questions, concerns or complaints please contact:**

Cameron Lang, TAFE NSW Investment Project Director at  
[cameron.lang2@tafensw.edu.au](mailto:cameron.lang2@tafensw.edu.au) or 0408 406 919.

**For all day to day construction related question please contact:**

Pierce Brennan, ADCO Construction Senior Project Manager on 0419 422 566

Simon Brown, ADCO Construction Site Manager on 0419 012 704

Mitch Alexander, TAFE NSW Senior Project Manager (Ernst & Young) on 0428 440 555