

TAFENSW

IATC WEEKLY CONSTRUCTION STATUS UPDATE

INSTITUTE OF APPLIED TECHNOLOGY
CONSTRUCTION (IATC)

28 July 2022

COLD BUT CLEAR

With rain at bay this week there has been some great progress again on site. The upper ground floor and level one decks are really starting to shape with steel reinforcement being placed. Next week we hope to have the first level one concrete pour completed. South-eastern retaining wall works are well advanced with shotcrete soon to be placed. Gate 2 works are also well advanced and should be generally complete in early August.



Active site photo 28 July 2022

OUR IATC ROADMAP



**IATC Open
For
Business**



Q3 2021

Q4 2021

Q1 2022

Q2 2022

Q3 2022

Q4 2022

Q1 & Q2 2023

**Contractor RTA
and
First Partner
Workshop**

1

2

**Collaboration Agreements
and Construction**

- Collaboration Agreements signed by Uni & principal industry partner
- Building construction commences

3

Education Model

Education Model agreed by all partners

4

Operating Model

- Operating Model developed
- Product development
- Workforce planning
- Op Readiness plan refined

5

Marketing Campaign

IATC Marketing Campaign begins ahead of enrolment period

6

**Commence Operational
Readiness**

Preparation for IAT opening

7

**Construction
Complete March 2023**

- Building handover end April
- Ready for business end May
- Multi-trades operations commence Day 1 Semester 2

We are here

HIGHLIGHTS AND ACHIEVEMENTS (WE 30/07/22)

- Continuation of formwork, detailing and placement of steel reinforcement for upper ground floor deck
- Continuation of frames and formwork level one deck and stair core walls
- Civil excavation of South-eastern piles and capping beam including placement of steel reinforcement in readiness for shotcrete
- Building services design coordination continued
- Gate 2 works continued, with new pedestrian pathways poured, signage plinth formed and poured, and lighting rough-in completed

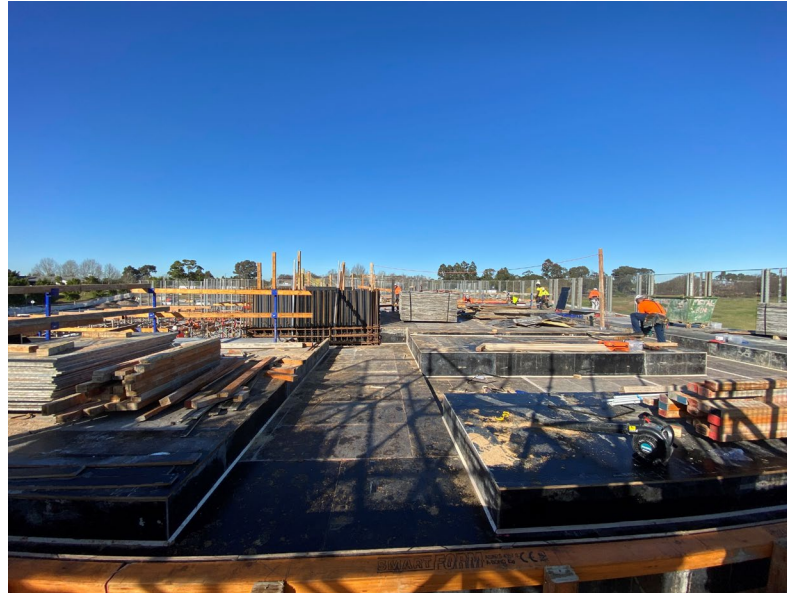


South-eastern piles and capping beam

SITE PHOTOGRAPHS (WE 30/07/22)



Northern capping beam



Level one deck and stair core walls formed and soon ready for steel reinforcement



Steel reinforcement to upper ground floor deck beams

NEXT STEPS (01/08 – 06/08/2022)

- Continue forming the level one deck
- Continue placement of steel reinforcement to the upper ground floor and level one deck
- Continue backfilling Eastern retaining wall
- Concrete pour to level one deck
- Continue Gate 2 upgrade works
- Continue shotcrete to South-eastern retaining wall
- Commence blockwork to South-eastern plant rooms



South-eastern retaining wall

COVID 19 MANAGEMENT PLAN

- COVID 19 controls maintained on site
- ADCO and Government Sign in at entry
- SafeWork NSW Management Plans updated
- Awareness signage increased around site
- Scheduled lunch break cycles
- Full time cleaning crew
- Limiting unnecessary site visits
- Project Team Resilience Plan in place



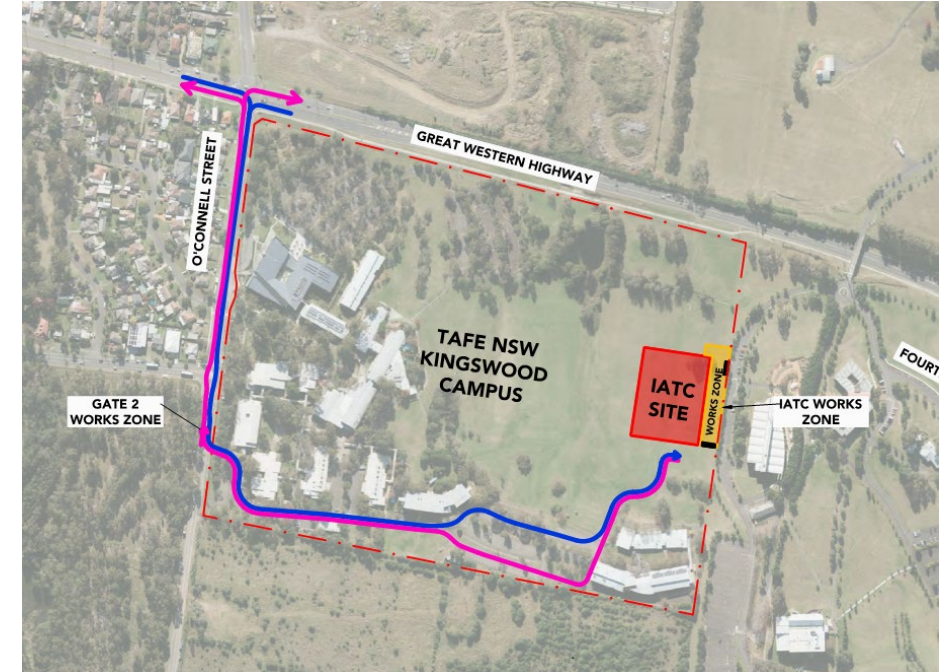
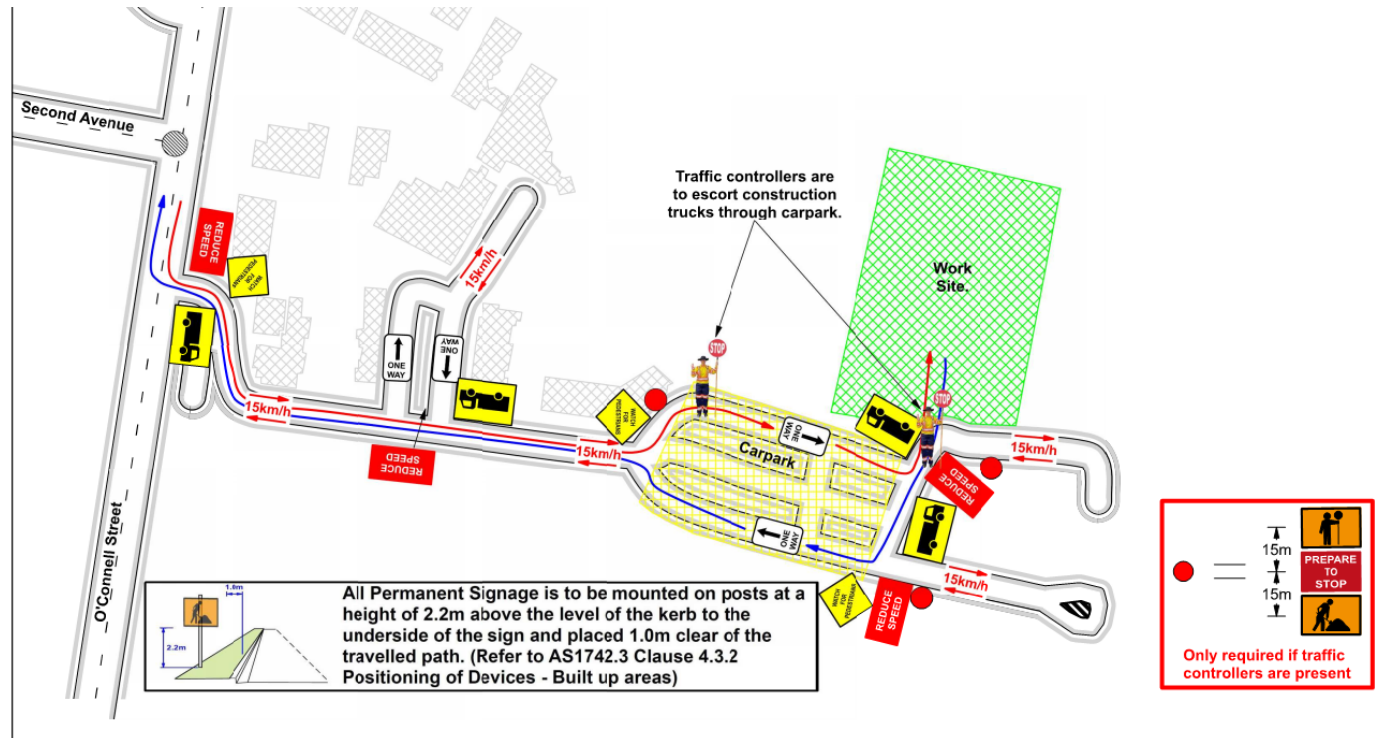
TRAFFIC MOVEMENTS (WC 01/08/22)

Traffic movement through Western Sydney University Werrington South Campus

	Monday 1/08/2022	Tuesday 2/08/2022	Wednesday 3/08/2022	Thursday 4/08/2022	Friday 5/08/2022	Saturday 6/08/2022
Description of Work Activities	Backfilling Eastern retaining wall, formwork and reinforcements, and Gate 2 works	Backfilling Eastern retaining wall, formwork and reinforcements, and Gate 2 works	Backfilling Eastern retaining wall, formwork and reinforcements, stripping formwork, Gate 2 works and concrete pour to columns	Installation of services to upper ground floor and level one decks, continue formwork and reinforcements, stripping formwork, Gate 2 works and shotcrete to South-eastern retaining wall.	Concrete to level one and Gate 2 works generally complete	Continue formwork and reinforcements and blockwork to South-eastern plant rooms
Standing Traffic Control	Not required	Not required	Not required	Not required	Required	Not Required
07.00am						
08.00am						
09.00am						
10.00am						
11.00am						
12.00pm	Deliveries of material expected throughout the day	Approximately 3 concrete truck deliveries expected and material deliveries throughout the day	Multiple concrete trucks and delivery of material expected throughout the day	Multiple concrete trucks and delivery of material expected throughout the day	Multiple concrete trucks and delivery of material expected throughout the day	Deliveries of material expected throughout the day
01.00pm						
02.00pm						
03.00pm						
04.00pm						
05.00pm						
06.00pm						

TAFE NSW NEPEAN – KINGSWOOD CAMPUS TRAFFIC PLAN

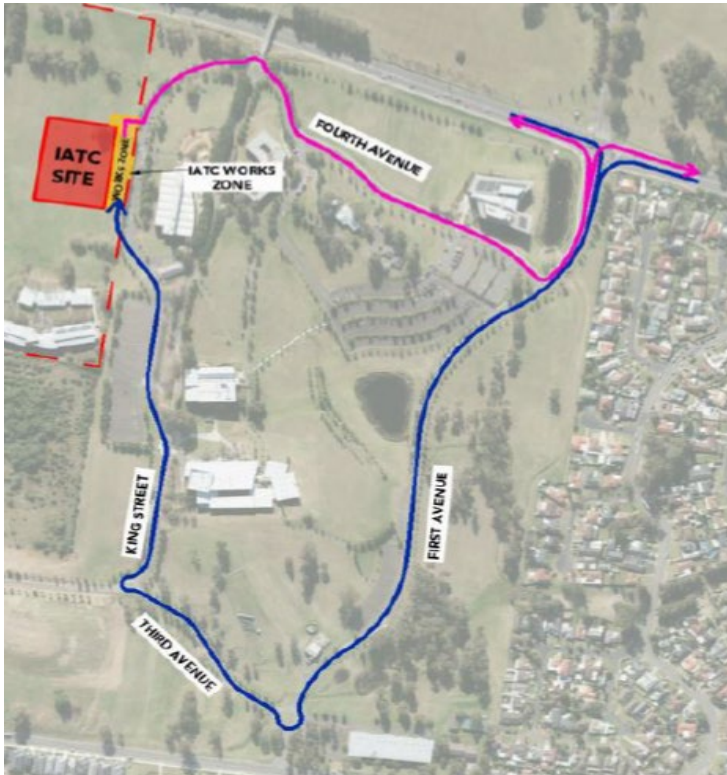
TAFE NSW Nepean - Kingswood Campus Specific Risk Assessment and Traffic Control Plan



Truck Access Route and Site Plan

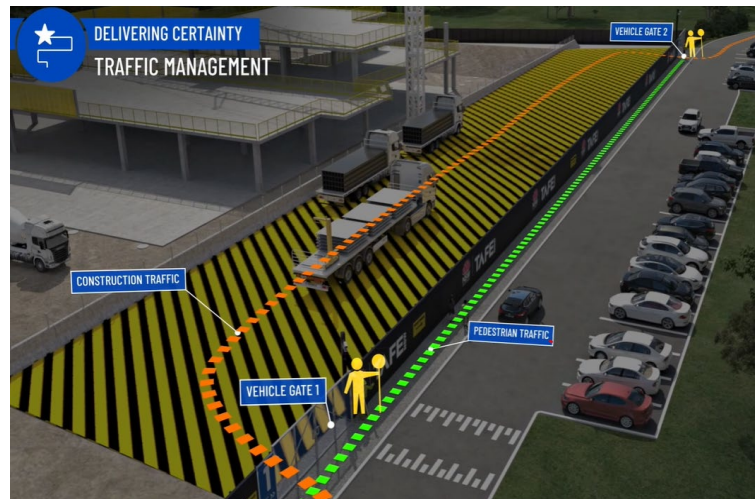
CONSTRUCTION TRAFFIC ROUTE AND SITE ACCESS

WESTERN SYDNEY UNIVERSITY WERRINGTON SOUTH



Blue = Construction traffic entry
Pink = Construction traffic exit

Traffic control will be in place (as required) between:
7am and 6pm Monday-Friday
8am and 4pm Saturdays



IATC Construction site entry and exit



All construction vehicles will enter and exit the WSU Werrington South Campus in a controlled manner.

All construction vehicle parking will be maintained within the site compound with entry and exit through TAFE NSW Nepean Kingswood Campus.

No WSU parking will be affected due to the construction.

KEY CONTACTS

For key project updates and information about the Institute of Applied Technology for Construction please visit the project website at

- [IATC project website](#)
- Phone: [1800 752 142](tel:1800752142)
- Email: iat@tafensw.edu.au

For all project related questions, concerns or complaints please contact:

Cameron Lang, TAFE NSW Investment Project Director at
cameron.lang2@tafensw.edu.au or 0408 406 919.

For all day to day construction related question please contact:

Pierce Brennan, ADCO Construction Senior Project Manager on 0419 422 566

Simon Brown, ADCO Construction Site Manager on 0419 012 704

Mitch Alexander, TAFE NSW Senior Project Manager (Ernst & Young) on 0428 440 555