

RUOK?



TAFENSW

IATC WEEKLY CONSTRUCTION STATUS UPDATE

INSTITUTE OF APPLIED TECHNOLOGY
CONSTRUCTION (IATC) & MULTI-TRADES

9 September 2022



CONTEXT

TAFE NSW is delivering the Institute of Applied Technology Construction; an \$80M Capital investment located at the TAFE NSW Nepean – Kingswood campus.

This new State of the Art, 5 Star Green Star Multi-trades facility will provide specialised training in construction, carpentry, electrical and plumbing, to support the trades skills shortages in the Western Sydney Region.

The Institute of Applied Technology is a new education offering from the NSW Government, where leading educational institutions and industry will co-locate, co-design, and co-deliver theoretical and practical learning to empower people with the skills and experience they need to thrive in life and work. It will provide employable outcomes, transferrable skills, blended learning, and flexible pathways. This will ensure that NSW has a workforce ready to meet the needs of industry and future infrastructure demand.

Construction is well underway with completion due late March 2023.

THE WEEK THAT WAS

This week saw some great construction progress across the site. With rain looming, the site team are pushing hard to complete the main structure to allow roof and façade works to commence.

Along with construction, this week saw many other activities. It was a week to ask your fellow workers, colleagues, family and friends, RUOK. It was an important reminder to stop and take some time to ensure we reach out to others, as we are all dealing with life's challenges, no matter how big or small.

On Thursday, ADCO Constructions, along with Transform, put on a lunch for the site team to acknowledge their hard work, to build moral, and show support for the workers that build our homes and infrastructure with their own hands, creativity, and hard work. This can sometimes be physically and mentally demanding. Visit mates.org.au/construction/

The new Institute of Applied Technology Construction will lead the way forward for our construction industry.

HIGHLIGHTS AND ACHIEVEMENTS (WE 10/09/22)

- Continuation of formwork, detailing and placement of steel reinforcement for future Level One concrete pours
- Continuation of South-eastern retaining wall
- Continuation of North-eastern retaining wall
- Continuation of blockwork to various areas
- Commencement of civil sandpit excavation
- Stripping of formwork to Lower and Upper Ground floors
- Building services design coordination continued



North-western façade – Lower and Upper Ground floors

OUR IATC ROADMAP



**IATC Open
For
Business**



Q3 2021

Q4 2021

Q1 2022

Q2 2022

Q3 2022

Q4 2022

Q1 & Q2 2023

**Contractor RTA
and
First Partner
Workshop**

1

2

**Collaboration Agreements
and Construction**

- Collaboration Agreements signed by Uni & principal industry partner
- Building construction commences

3

Education Model
Education Model agreed by
all partners

4

Operating Model

- Operating Model developed
- Product development
- Workforce planning
- Op Readiness plan refined

5

Marketing Campaign

IATC Marketing Campaign begins ahead
of enrolment period

6

**Commence Operational
Readiness**

Preparation for IAT opening

7

**Construction
Complete March 2023**

- Building handover end April
- Ready for business end May
- Multi-trades operations
commence Day 1 Semester 2

We are here

SITE PHOTOGRAPH (WE 10/09/22)



Site photograph

SITE PHOTOGRAPH (WE 10/09/22)



South-eastern retaining wall connection



North-eastern retaining wall preparation

SITE PHOTOGRAPH (WE 10/09/22)



Western façade and Central Atrium



Central Atrium

NEXT STEPS (12/09 – 17/09/2022)

- Continue preparation for Level One concrete pours
- Continue stripping formwork
- Continue North-eastern and South-eastern retaining wall works
- Continue blockwork
- Continue site civil and services works
- Continue services design coordination
- Prepare for services trade rough-ins



COVID 19 MANAGEMENT PLAN

- COVID 19 controls maintained on site
- ADCO and Government Sign in at entry
- SafeWork NSW Management Plans updated
- Awareness signage increased around site
- Scheduled lunch break cycles
- Full time cleaning crew
- Limiting unnecessary site visits
- Project Team Resilience Plan in place



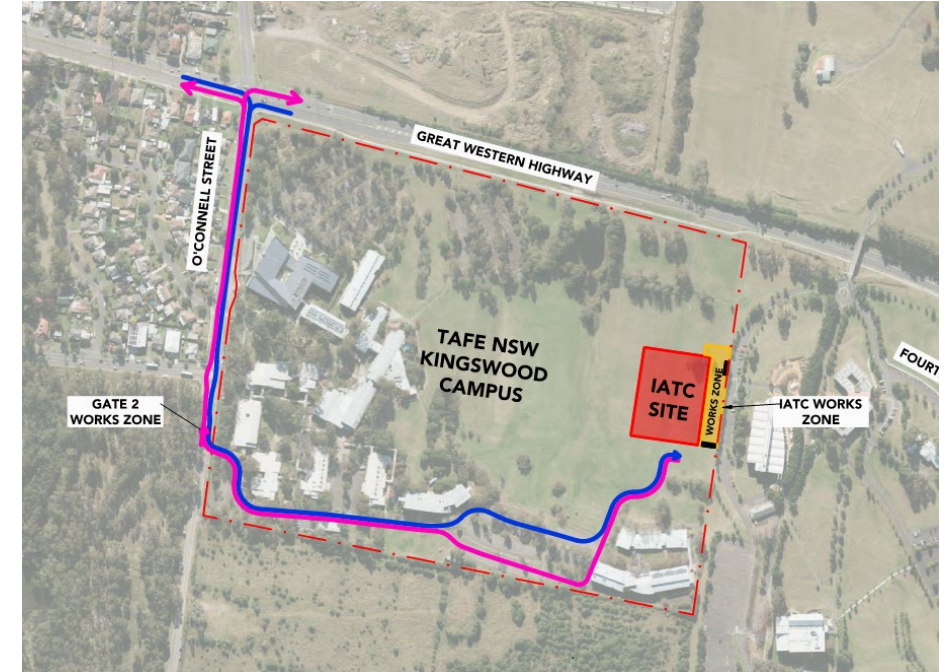
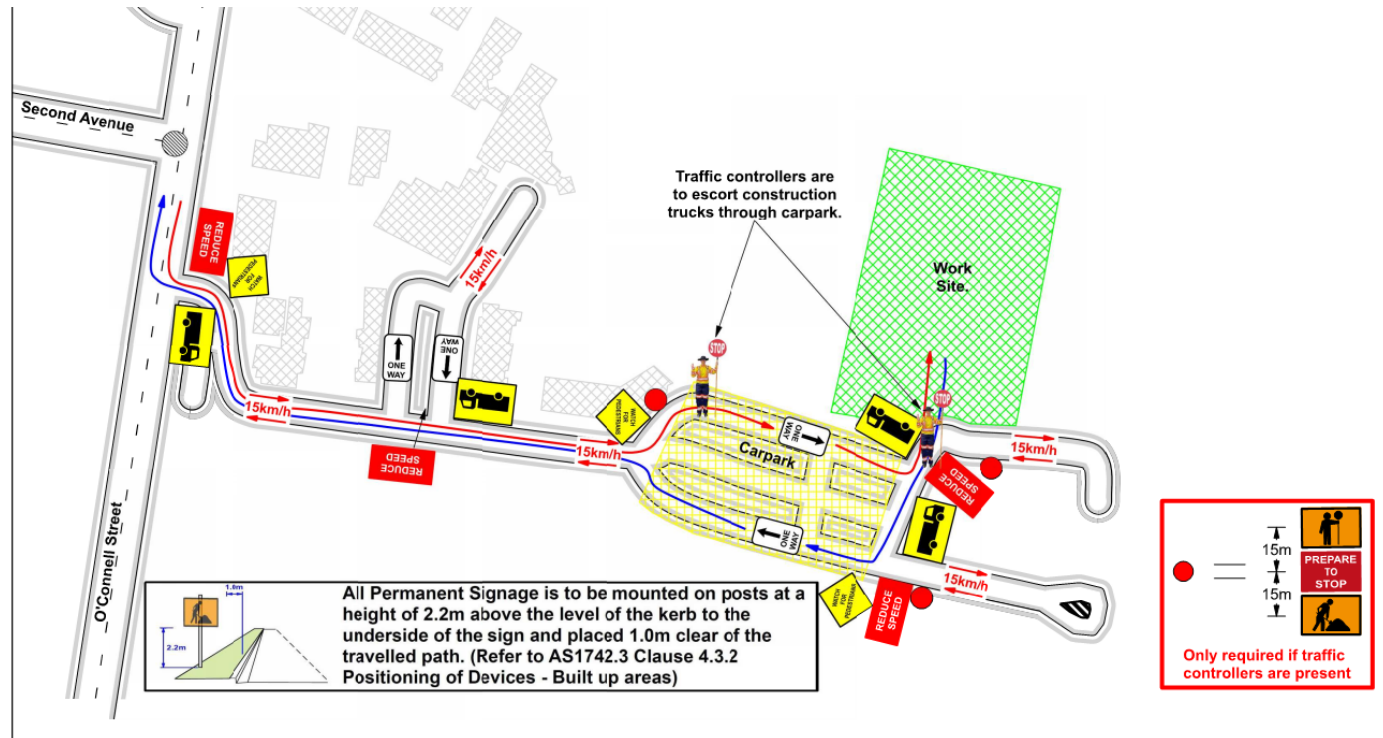
TRAFFIC MOVEMENTS (WC 12/09/22)

Traffic movement through Western Sydney University Werrington South Campus

	Monday 12/09/2022	Tuesday 13/09/2022	Wednesday 14/09/2022	Thursday 15/09/2022	Friday 16/09/2022	Saturday 17/09/2022
Description of Work Activities	Stripping formwork from concreted areas, placement of formwork and reinforcements, continue blockwork, services installation, detailed excavation and retaining wall works	Stripping formwork from concreted areas, placement of formwork and reinforcements, continue blockwork, services installation, detailed excavation and retaining wall works	Stripping formwork from concreted areas, placement of formwork and reinforcements, continue blockwork, services installation, detailed excavation and retaining wall works	Stripping formwork from concreted areas, placement of formwork and reinforcements, continue blockwork, services installation, detailed excavation and retaining wall works	Stripping formwork from concreted areas, placement of formwork and reinforcements, continue blockwork, services installation, detailed excavation and retaining wall works	Stripping formwork from concreted areas, placement of formwork and reinforcements, continue blockwork, services installation, detailed excavation and retaining wall works
Standing Traffic Control	Not required	Not required	Not required	Not required	Not required	Not Required
07.00am						
08.00am						
09.00am						
10.00am						
11.00am						
12.00pm	Deliveries of material expected throughout the day	Deliveries of material expected throughout the day	Deliveries of material expected throughout the day	Deliveries of material expected throughout the day	Deliveries of material expected throughout the day	Deliveries of material expected throughout the day
01.00pm						
02.00pm						
03.00pm						
04.00pm						
05.00pm						
06.00pm						

TAFE NSW NEPEAN – KINGSWOOD CAMPUS TRAFFIC PLAN

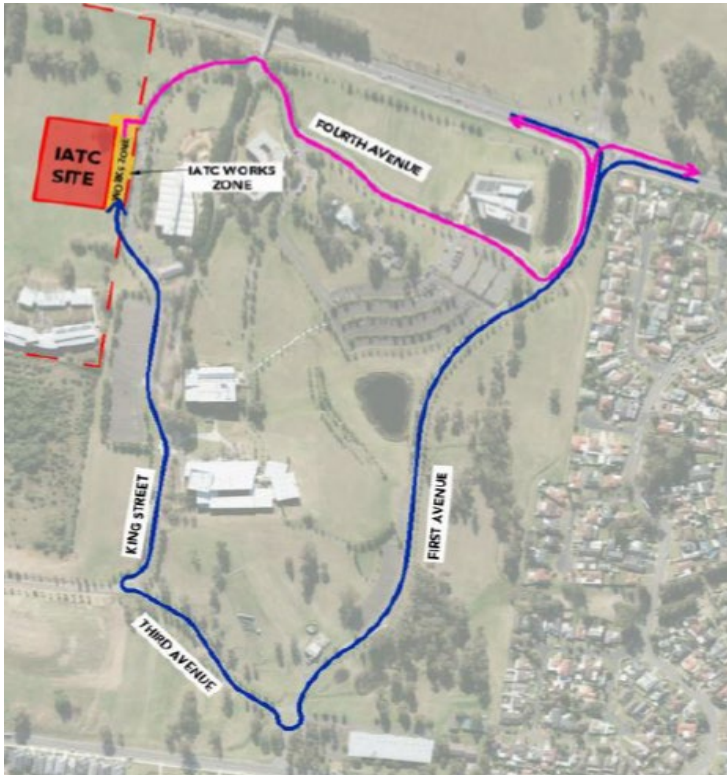
TAFE NSW Nepean - Kingswood Campus Specific Risk Assessment and Traffic Control Plan



Truck Access Route and Site Plan

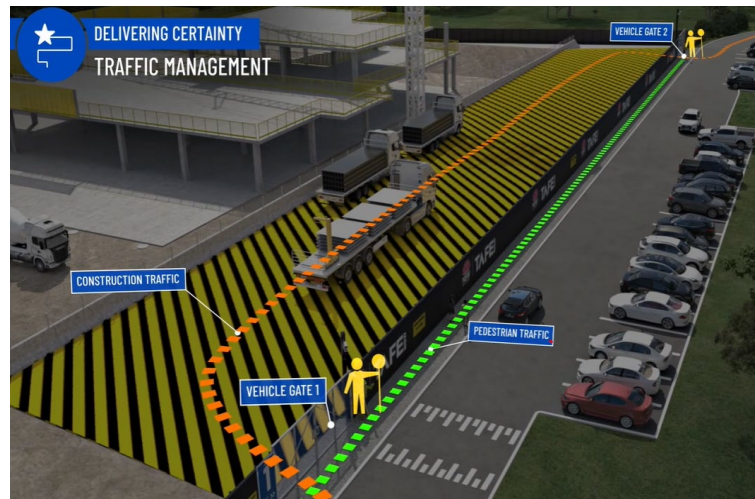
CONSTRUCTION TRAFFIC ROUTE AND SITE ACCESS

WESTERN SYDNEY UNIVERSITY WERRINGTON SOUTH



Blue = Construction traffic entry
Pink = Construction traffic exit

Traffic control will be in place (as required) between:
7am and 6pm Monday-Friday
8am and 4pm Saturdays



IATC Construction site entry and exit



All construction vehicles will enter and exit the WSU Werrington South Campus in a controlled manner.

All construction vehicle parking will be maintained within the site compound with entry and exit through TAFE NSW Nepean Kingswood Campus.

No WSU parking will be affected due to the construction.

KEY CONTACTS

For key project updates and information about the Institute of Applied Technology for Construction please visit the project website at

- [IATC project website](#)
- Phone: [1800 752 142](tel:1800752142)
- Email: iat@tafensw.edu.au

For all project related questions, concerns or complaints please contact:

Cameron Lang, TAFE NSW Investment Project Director at
cameron.lang2@tafensw.edu.au or 0408 406 919.

For all day to day construction related question please contact:

Pierce Brennan, ADCO Construction Senior Project Manager on 0419 422 566

Simon Brown, ADCO Construction Site Manager on 0419 012 704

Mitch Alexander, TAFE NSW Senior Project Manager (Ernst & Young) on 0428 440 555