

**TAFE**NSW

## **IATC WEEKLY CONSTRUCTION STATUS UPDATE**

INSTITUTE OF APPLIED TECHNOLOGY -  
**CONSTRUCTION (IATC)** & MULTI-TRADES

14 October 2022

## CONTEXT

TAFE NSW is delivering the Institute of Applied Technology - Construction; an \$84.5M Capital investment located at the TAFE NSW Nepean - Kingswood campus.

This new State of the Art, 5 Star Green Star Multi-trades facility will provide specialised training in construction, carpentry, electrical and plumbing, to support trades skills shortages in the Western Sydney Region.

The Institute of Applied Technology is a new education offering from the NSW Government, where leading educational institutions and industry will co-locate, co-design, and co-deliver theoretical and practical learning to empower people with the skills and experience they need to thrive in life and work. It will provide employable outcomes, transferrable skills, blended learning, and flexible pathways. This will ensure that NSW has a workforce ready to meet the needs of industry and future infrastructure demand.

Construction is well underway with completion due late March 2023.

## THE WEEK THAT WAS

Dewatering of the site was required this week following the rain events that continue to hinder project progress. The site team are managing the site well, ensuring all environmental matters are controlled.

This week saw a great project milestone achieved by the construction team who managed to successfully pour 400m<sup>3</sup> of concrete on Tuesday to complete Level One and the bridge across the Central Atrium.

From here, the team will commence the erecting of stair cores, lift cores, columns and structural steel to support the roof structure. There was also a huge emphasis on the stripping of formwork from the Lower and Upper Ground Floors to open up space for the continuation of set-out and installation of high-level services such as fire sprinklers, electrical cable trays, plumbing, and air-conditioning. Back-filling of retaining walls, civil ground services and blockwork continued.

# OUR IATC ROADMAP



**IATC Open  
For  
Business**



**Q3 2021**

**Q4 2021**

**Q1 2022**

**Q2 2022**

**Q3 2022**

**Q4 2022**

**Q1 & Q2 2023**

**Contractor RTA  
and  
First Partner  
Workshop**

1

2

**Collaboration Agreements  
and Construction**

- Collaboration Agreements signed by Uni & principal industry partner
- Building construction commences

3

**Education Model**

Education Model agreed by all partners

4

**Operating Model**

- Operating Model developed
- Product development
- Workforce planning
- Op Readiness plan refined

5

**Marketing Campaign**

IATC Marketing Campaign begins ahead of enrolment period

6

**Commence Operational  
Readiness**

Preparation for IAT opening

7

**Construction  
Complete March 2023**

- Building handover end April
- Ready for business end May
- Multi-trades operations commence Day 1 Semester 2

**We are here**

## HIGHLIGHTS AND ACHIEVEMENTS (WE 15/10/22)

- Successful placement of 400m<sup>3</sup> of concrete to complete Level One
- Installation of stairs to stair cores underway
- Continuation of blockwork to various areas
- Back-filling of retaining walls
- Stripping of formwork to Lower and Upper Ground floors
- Building services design coordination continued
- High-level services rough-in continued



Level One concrete pour No.4

# SITE PHOTOGRAPH (WE 15/10/22)

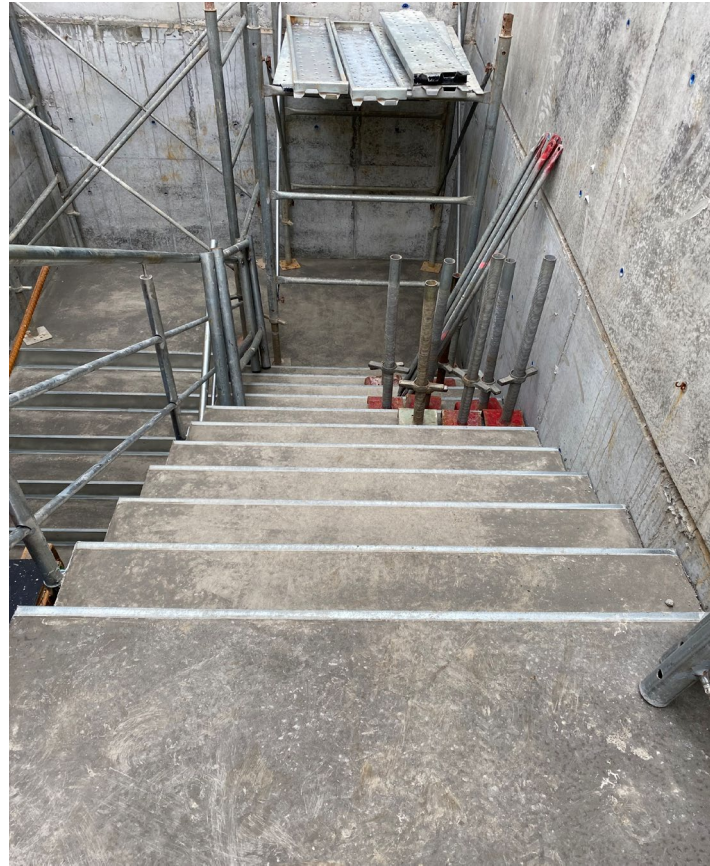


Site photograph

# SITE PHOTOGRAPH (WE 15/10/22)



Level One stair core



Stair core stair installation



High-level services installation

# SITE PHOTOGRAPH (WE 15/10/22)



Site Photograph

## NEXT STEPS (17/10 - 22/10/2022)

- Continue preparation for Upper Ground Floor North-western corner concrete pour
- Continue stripping formwork
- Continue North-eastern and South-eastern retaining wall works
- Continue blockwork
- Continue site civil and services works
- Continue services design coordination
- Continue services trade rough-ins
- Continue stair core and lift core scaffolding and formwork
- Commence Level One columns



Site Photograph

# COVID 19 MANAGEMENT PLAN

- COVID 19 controls maintained on site
- ADCO and Government Sign in at entry
- SafeWork NSW Management Plans updated
- Awareness signage increased around site
- Scheduled lunch break cycles
- Full time cleaning crew
- Limiting unnecessary site visits
- Project Team Resilience Plan in place



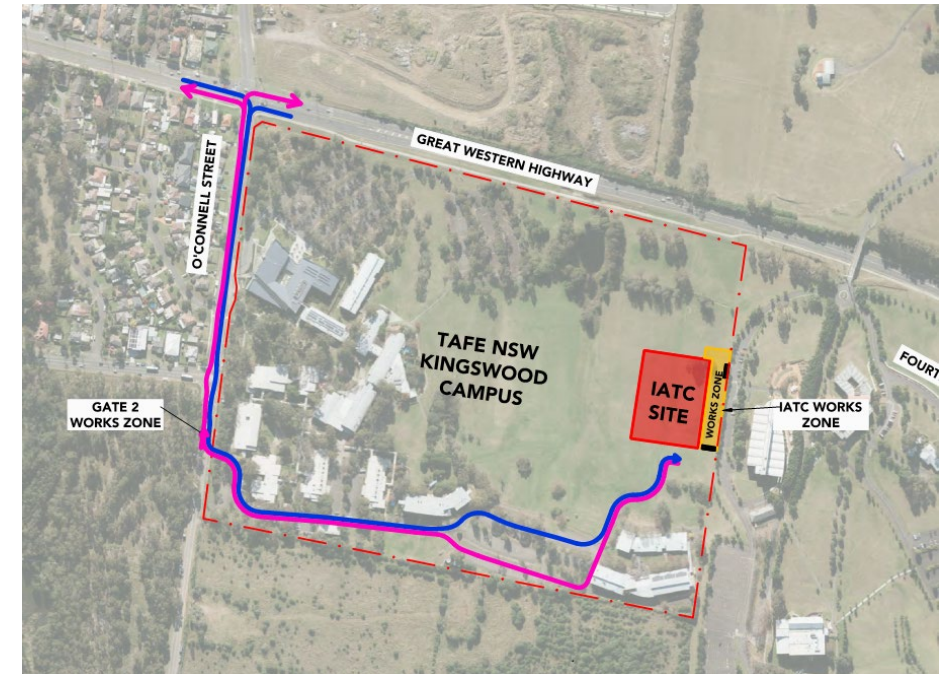
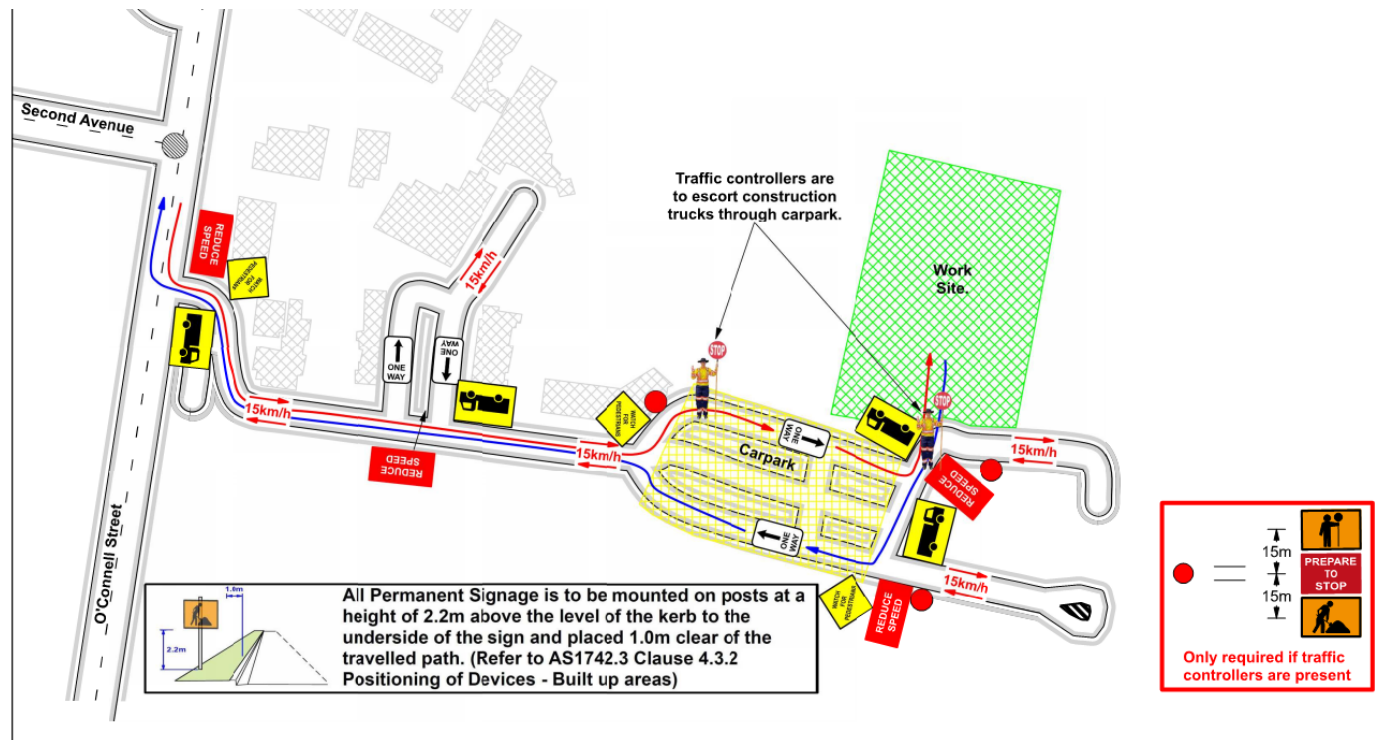
# TRAFFIC MOVEMENTS (WC 17/10/22)

## Traffic movement through Western Sydney University Werrington South Campus

	Monday 17/10/2022	Tuesday 18/10/2022	Wednesday 19/10/2022	Thursday 20/10/2022	Friday 21/10/2022	Saturday 22/10/2022
<b>Description of Work Activities</b>	Stripping formwork from concreted areas, placement of formwork and reinforcements, continue blockwork, services installation, detailed excavation and retaining wall works	Stripping formwork from concreted areas, placement of formwork and reinforcements, continue blockwork, services installation, detailed excavation and retaining wall works	Stripping formwork from concreted areas, placement of formwork and reinforcements, continue blockwork, services installation, detailed excavation and retaining wall works	Stripping formwork from concreted areas, placement of formwork and reinforcements, continue blockwork, services installation, detailed excavation and retaining wall works. Proposed concrete pour	Stripping formwork from concreted areas, placement of formwork and reinforcements, continue blockwork, services installation, detailed excavation and retaining wall works. Proposed concrete pour	Stripping formwork from concreted areas, placement of formwork and reinforcements, continue blockwork, services installation, detailed excavation and retaining wall works
<b>Standing Traffic Control</b>	Not required	Not required	Not required	Required (weather pending)	Required	Not Required
<b>07.00am</b>						
<b>08.00am</b>						
<b>09.00am</b>						
<b>10.00am</b>						
<b>11.00am</b>						
<b>12.00pm</b>	Deliveries of material expected throughout the day	Deliveries of concrete and material expected throughout the day	Deliveries of material expected throughout the day	Deliveries of concrete (weather pending) and material expected throughout the day	Deliveries of concrete (weather pending) and material expected throughout the day	Deliveries of material expected throughout the day
<b>01.00pm</b>						
<b>02.00pm</b>						
<b>03.00pm</b>						
<b>04.00pm</b>						
<b>05.00pm</b>						
<b>06.00pm</b>						

# TAFE NSW NEPEAN – KINGSWOOD CAMPUS TRAFFIC PLAN

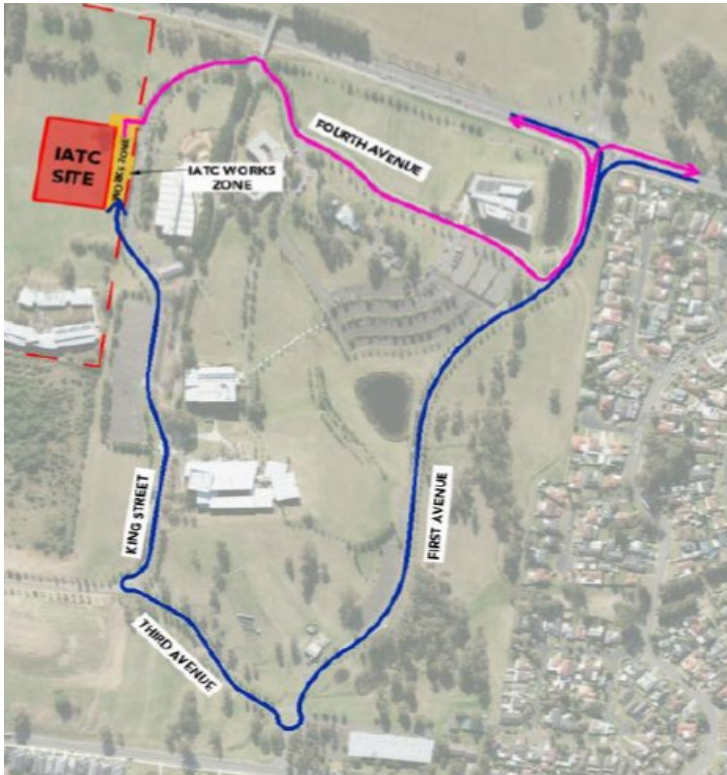
## TAFE NSW Nepean - Kingswood Campus Specific Risk Assessment and Traffic Control Plan



Truck Access Route and Site Plan

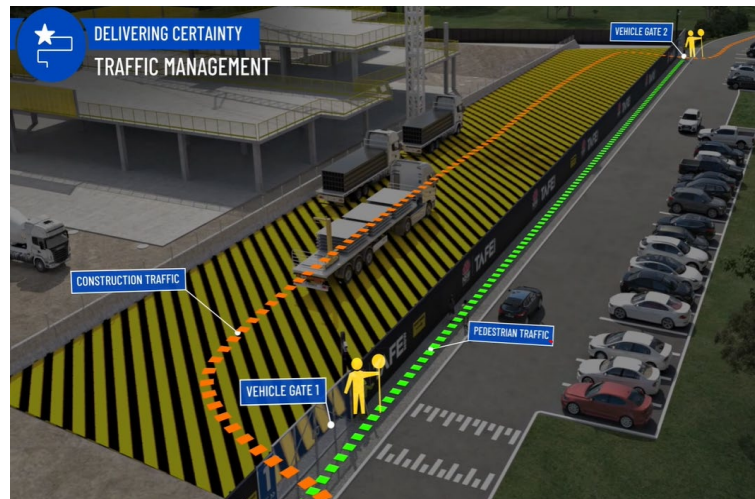
# CONSTRUCTION TRAFFIC ROUTE AND SITE ACCESS

## WESTERN SYDNEY UNIVERSITY WERRINGTON SOUTH



Blue = Construction traffic entry  
Pink = Construction traffic exit

Traffic control will be in place (as required) between:  
7am and 6pm Monday-Friday  
8am and 4pm Saturdays



IATC Construction site entry and exit



All construction vehicles will enter and exit the WSU Werrington South Campus in a controlled manner.

All construction vehicle parking will be maintained within the site compound with entry and exit through TAFE NSW Nepean Kingswood Campus.

No WSU parking will be affected due to the construction.

## KEY CONTACTS

For key project updates and information about the Institute of Applied Technology for Construction please visit the project website at

- [IATC project website](#)
- Phone: [1800 752 142](tel:1800752142)
- Email: [iat@tafensw.edu.au](mailto:iat@tafensw.edu.au)

**For all project related questions, concerns or complaints please contact:**

Cameron Lang, TAFE NSW Investment Project Director at  
[cameron.lang2@tafensw.edu.au](mailto:cameron.lang2@tafensw.edu.au) or 0408 406 919.

**For all day to day construction related question please contact:**

Pierce Brennan, ADCO Construction Senior Project Manager on 0419 422 566

Simon Brown, ADCO Construction Site Manager on 0419 012 704

Mitch Alexander, TAFE NSW Senior Project Manager (Ernst & Young) on 0428 440 555