

**TAFE**NSW

## **IATC WEEKLY CONSTRUCTION STATUS UPDATE**

INSTITUTE OF APPLIED TECHNOLOGY -  
**CONSTRUCTION (IATC)** & MULTI-TRADES

21 October 2022

## CONTEXT

TAFE NSW is delivering the Institute of Applied Technology - Construction; an \$84.5M Capital investment located at the TAFE NSW Nepean - Kingswood campus.

This new State of the Art, 5 Star Green Star Multi-trades facility will provide specialised training in construction, carpentry, electrical and plumbing, to support trades skills shortages in the Western Sydney Region.

The Institute of Applied Technology is a new education offering from the NSW Government, where leading educational institutions and industry will co-locate, co-design, and co-deliver theoretical and practical learning to empower people with the skills and experience they need to thrive in life and work. It will provide employable outcomes, transferrable skills, blended learning, and flexible pathways. This will ensure that NSW has a workforce ready to meet the needs of industry and future infrastructure demand.

Construction is well underway with completion due late March 2023.

## THE WEEK THAT WAS

The presence of continued rain this week didn't dampen progress too greatly. The site team managed to make the most of every dry opportunity to continue the structure with the placement of roof structural steel in their sights.

Structural column reinforcement placement was a key focus, along with forming the stair and lift core walls, continued strip-out for Lower and Upper level formwork, continuation of high-level services installation, and commencement of the façade framework installation. The façade framework really starts to define the building perimeter and is the first stage of closing up the building. There is still a long way to go, but closing up the building enables the commencement of more internal trades, fixtures and finishes.

# OUR IATC ROADMAP



**IATC Open  
For  
Business**



**Q3 2021**

**Q4 2021**

**Q1 2022**

**Q2 2022**

**Q3 2022**

**Q4 2022**

**Q1 & Q2 2023**

**Contractor RTA  
and  
First Partner  
Workshop**

1

2

**Collaboration Agreements  
and Construction**

- Collaboration Agreements signed by Uni & principal industry partner
- Building construction commences

3

**Education Model**

Education Model agreed by all partners

4

**Operating Model**

- Operating Model developed
- Product development
- Workforce planning
- Op Readiness plan refined

5

**Marketing Campaign**

IATC Marketing Campaign begins ahead of enrolment period

6

**Commence Operational  
Readiness**

Preparation for IAT opening

7

**Construction  
Complete March 2023**

- Building handover end April
- Ready for business end May
- Multi-trades operations commence Day 1 Semester 2

**We are here**



## HIGHLIGHTS AND ACHIEVEMENTS (WE 22/10/22)

- Installation of stairs to stair cores continued
- Form and reinforcement of Level One stair and lift core walls
- Commencement for façade framing
- Continuation of blockwork to various areas
- Back-filling of retaining walls
- Stripping of formwork to Lower and Upper Ground floors
- Erection of steel reinforcement for roof columns
- Building services design coordination continued
- High-level services rough-in continued



North-western façade framing

# SITE PHOTOGRAPH (WE 22/10/22)



Site photograph



# SITE PHOTOGRAPH (WE 22/10/22)



Central Atrium taking shape



Level One roof column



Level One Atrium bridge



## SITE PHOTOGRAPH (WE 22/10/22)



High-level services continue



Upper Ground Floor opening up and façade framing



## NEXT STEPS (24/10 - 29/10/2022)

- Continue stripping formwork
- Continue North-eastern and South-eastern retaining wall works
- Continue blockwork
- Continue Level One columns
- Continue services trade rough-ins
- Continue stair core and lift core scaffolding and formwork
- Continue façade framing
- Continue civil ground services



Site Photograph

# COVID 19 MANAGEMENT PLAN

- COVID 19 controls maintained on site
- ADCO and Government Sign in at entry
- SafeWork NSW Management Plans updated
- Awareness signage increased around site
- Scheduled lunch break cycles
- Full time cleaning crew
- Limiting unnecessary site visits
- Project Team Resilience Plan in place



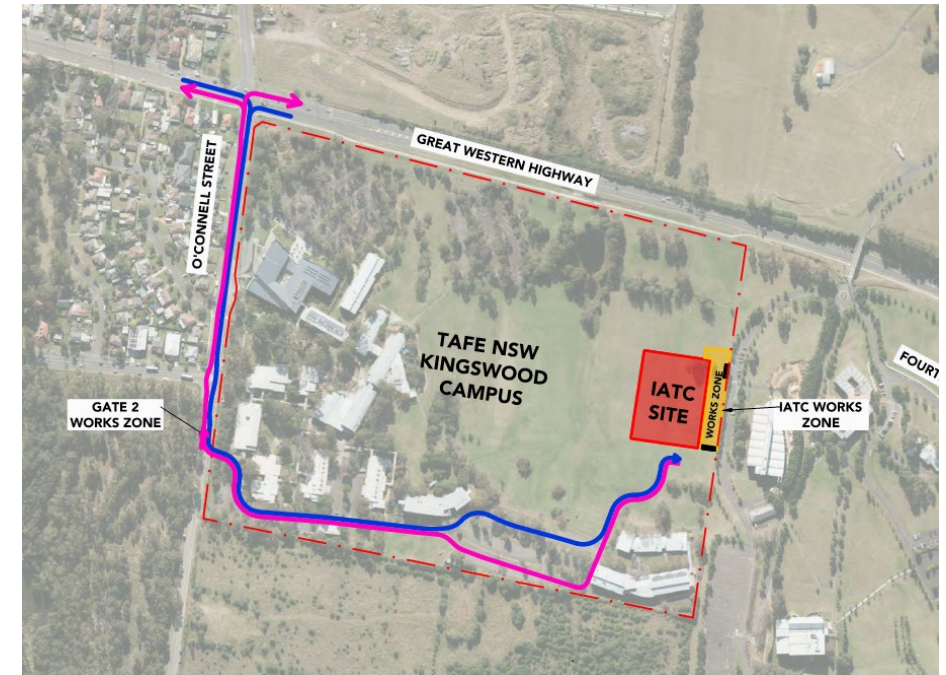


# TRAFFIC MOVEMENTS (WC 24/10/22)

Traffic movement through Western Sydney University Werrington South Campus

	Monday 24/10/2022	Tuesday 25/10/2022	Wednesday 26/10/2022	Thursday 27/10/2022	Friday 28/10/2022	Saturday 29/10/2022
<b>Description of Work Activities</b>	Stripping formwork from concreted areas, placement of formwork and reinforcements, continue blockwork, services installation, retaining wall works and façade framing	Stripping formwork from concreted areas, placement of formwork and reinforcements, continue blockwork, services installation, retaining wall works and façade framing. Potential concrete pour for Level One stair core No.1 wall and columns	Stripping formwork from concreted areas, placement of formwork and reinforcements, continue blockwork, services installation, retaining wall works and façade framing	Stripping formwork from concreted areas, placement of formwork and reinforcements, continue blockwork, services installation, retaining wall works and façade framing	Stripping formwork from concreted areas, placement of formwork and reinforcements, continue blockwork, services installation, retaining wall works and façade framing	Stripping formwork from concreted areas, placement of formwork and reinforcements, continue blockwork, services installation, retaining wall works and façade framing
<b>Standing Traffic Control</b>	Not required	Not required	Not required	Not required	Not required	Not Required
<b>07.00am</b>						
<b>08.00am</b>						
<b>09.00am</b>						
<b>10.00am</b>						
<b>11.00am</b>						
<b>12.00pm</b>	Deliveries of material expected throughout the day	Deliveries of concrete and material expected throughout the day	Deliveries of material expected throughout the day	Deliveries of material expected throughout the day	Deliveries of material expected throughout the day	Deliveries of material expected throughout the day
<b>01.00pm</b>						
<b>02.00pm</b>						
<b>03.00pm</b>						
<b>04.00pm</b>						
<b>05.00pm</b>						
<b>06.00pm</b>						

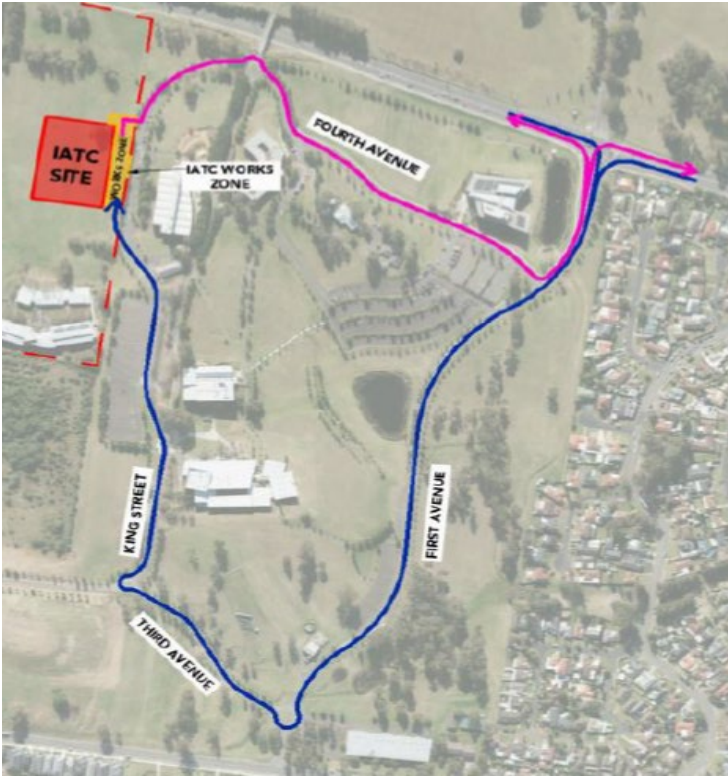
# TAFE NSW Nepean - Kingswood Campus Specific Risk Assessment and Traffic Control Plan





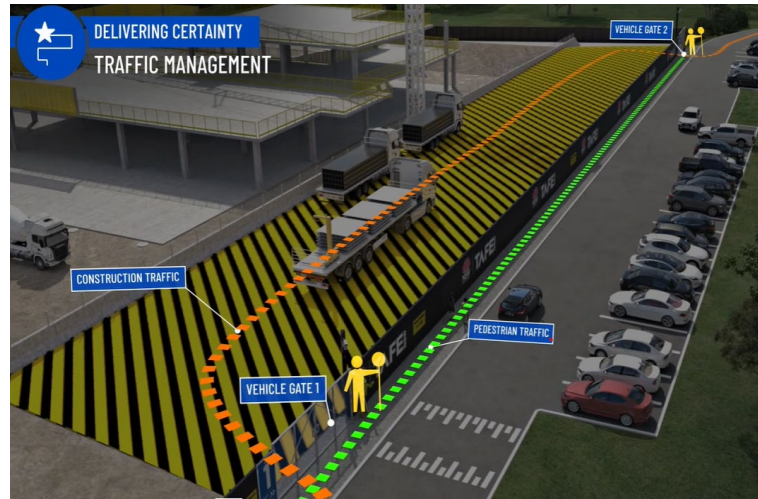
# CONSTRUCTION TRAFFIC ROUTE AND SITE ACCESS

## WESTERN SYDNEY UNIVERSITY WERRINGTON SOUTH



Blue = Construction traffic entry  
Pink = Construction traffic exit

Traffic control will be in place (as required) between:  
7am and 6pm Monday-Friday  
8am and 4pm Saturdays



## IATC Construction site entry and exit



All construction vehicles with enter and exit the WSU Werrington South Campus in a controlled manner.

All construction vehicle parking will be maintained within the site compound with entry and exit through TAFE NSW Nepean Kingswood Campus.

No WSU parking will be affected due to the construction.

## KEY CONTACTS

For key project updates and information about the Institute of Applied Technology for Construction please visit the project website at

- [IATC project website](#)
- Phone: [1800 752 142](tel:1800752142)
- Email: [iat@tafensw.edu.au](mailto:iat@tafensw.edu.au)

**For all project related questions, concerns or complaints please contact:**

Cameron Lang, TAFE NSW Investment Project Director at  
[cameron.lang2@tafensw.edu.au](mailto:cameron.lang2@tafensw.edu.au) or 0408 406 919.

**For all day to day construction related question please contact:**

Pierce Brennan, ADCO Construction Senior Project Manager on 0419 422 566

Simon Brown, ADCO Construction Site Manager on 0419 012 704

Mitch Alexander, TAFE NSW Senior Project Manager (Ernst & Young) on 0428 440 555