

**TAFE**NSW

## **IATC WEEKLY CONSTRUCTION STATUS UPDATE**

INSTITUTE OF APPLIED TECHNOLOGY -  
**CONSTRUCTION (IATC)** & MULTI-TRADES

28 October 2022

## CONTEXT

TAFE NSW is delivering the Institute of Applied Technology - Construction; an \$84.5M Capital investment located at the TAFE NSW Nepean - Kingswood campus.

This new State of the Art, 5 Star Green Star Multi-trades facility will provide specialised training in construction, carpentry, electrical and plumbing, to support trades skills shortages in the Western Sydney Region.

The Institute of Applied Technology is a new education offering from the NSW Government, where leading educational institutions and industry will co-locate, co-design, and co-deliver theoretical and practical learning to empower people with the skills and experience they need to thrive in life and work. It will provide employable outcomes, transferrable skills, blended learning, and flexible pathways. This will ensure that NSW has a workforce ready to meet the needs of industry and future infrastructure demand.

Construction is well underway with completion due late March 2023.

## THE WEEK THAT WAS

It was a mixed week this week in the weather department though the site team managed to make the most of every dry opportunity.

Structural column formwork remained a key focus, along with forming the stair and lift core walls. The contractor managed to pour stair core No.1 wall along with six columns. Final preparation of North-eastern Upper Ground Floor slab continued with a target concrete pour early next week. Strip-out for Lower and Upper level formwork continued, along with high-level services, and commencement of internal block walls. The entire structure should start to open up over the coming weeks seeing an increase in trade activity along with the placement of structural roofing steel.

# OUR IATC ROADMAP



**IATC Open  
For  
Business**



**Q3 2021**

**Q4 2021**

**Q1 2022**

**Q2 2022**

**Q3 2022**

**Q4 2022**

**Q1 & Q2 2023**

**Contractor RTA  
and  
First Partner  
Workshop**

1

2

**Collaboration Agreements  
and Construction**

- Collaboration Agreements signed by Uni & principal industry partner
- Building construction commences

3

**Education Model**

Education Model agreed by all partners

4

**Operating Model**

- Operating Model developed
- Product development
- Workforce planning
- Op Readiness plan refined

5

**Marketing Campaign**

IATC Marketing Campaign begins ahead of enrolment period

6

**Commence Operational  
Readiness**

Preparation for IAT opening

7

**Construction  
Complete March 2023**

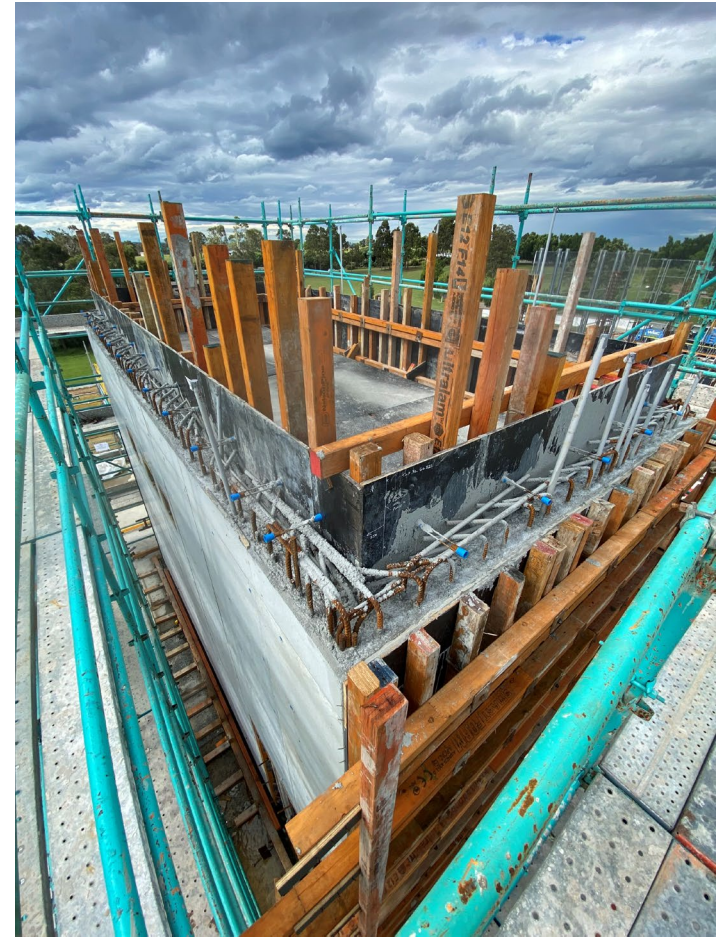
- Building handover end April
- Ready for business end May
- Multi-trades operations commence Day 1 Semester 2

**We are here**



## HIGHLIGHTS AND ACHIEVEMENTS (WE 29/10/22)

- Installation of stairs to stair cores continued
- Concrete pour of Level One stair core and six Level One columns
- Continuation of blockwork to various areas
- Stripping of formwork to Lower and Upper Ground floors
- Continued erection of steel reinforcement for roof columns
- Building services design coordination continued
- High-level services rough-in continued



Stair core No.1 poured – Formwork stripping commenced



# SITE PHOTOGRAPH (WE 29/10/22)



Site photograph



# SITE PHOTOGRAPH (WE 29/10/22)



External works



Level One columns



## NEXT STEPS (31/10 – 05/11/2022)

- Continue stripping formwork
- Placement of reinforcement and concrete to North-eastern Upper Ground Floor slab
- Continue blockwork
- Continue Level One columns
- Continue services trade rough-ins
- Continue stair core No.2 and lift core scaffolding and formwork
- Continue façade framing
- Continue civil ground services



Site Photograph

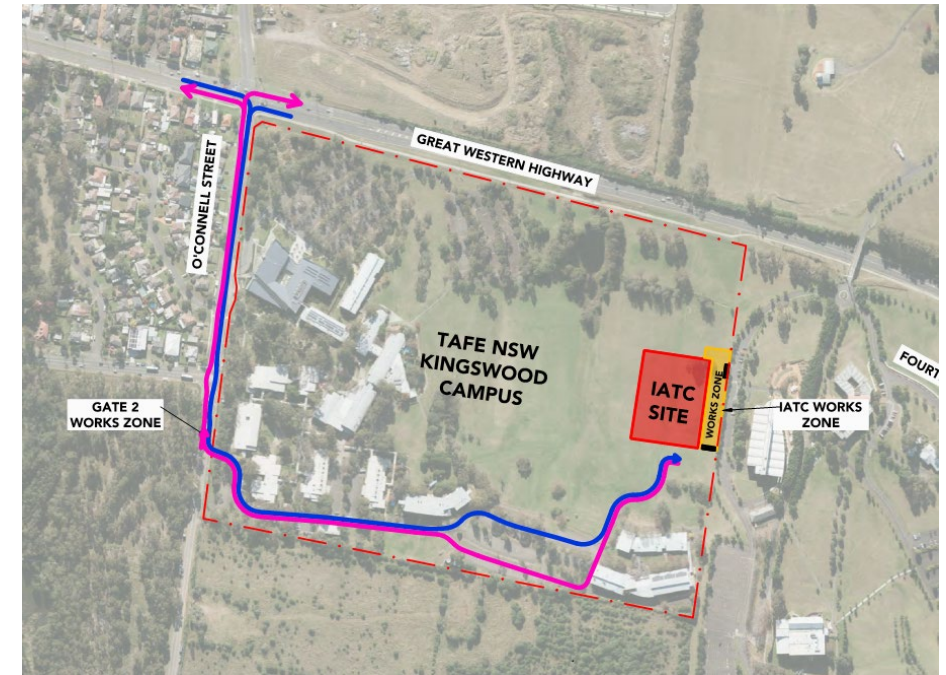


# TRAFFIC MOVEMENTS (WC 31/10/22)

## Traffic movement through Western Sydney University Werrington South Campus

	Monday 31/10/2022	Tuesday 1/11/2022	Wednesday 2/11/2022	Thursday 3/11/2022	Friday 4/11/2022	Saturday 5/11/2022
Description of Work Activities	Stripping formwork from concreted areas, placement of formwork and reinforcements, continue blockwork, services installation, and façade framing	Continuation of façade, commencement of civil sandpit reinforcement, continuation of high-level services installation, continuation of blockwork, continuation of formwork to L1 columns, stair core No,2 and lift shaft	Continuation of façade, concrete to civil sandpit base, concrete to North-eastern corner, continuation of high-level services installation, continuation of blockwork	Stripping formwork from concreted areas, placement of formwork and reinforcements, continue blockwork, services installation, and façade framing	Stripping formwork from concreted areas, placement of formwork and reinforcements, continue blockwork, services installation, and façade framing	Stripping formwork from concreted areas, placement of formwork and reinforcements, continue blockwork, services installation, and façade framing
Standing Traffic Control	Not required	Not required	Not required	Not required	Not required	Not Required
07.00am						
08.00am						
09.00am						
10.00am						
11.00am						
12.00pm	Deliveries of material expected throughout the day	Deliveries of material expected throughout the day	Deliveries of concrete and material expected throughout the day	Deliveries of material expected throughout the day	Deliveries of material expected throughout the day	Deliveries of material expected throughout the day
01.00pm						
02.00pm						
03.00pm						
04.00pm						
05.00pm						
06.00pm						

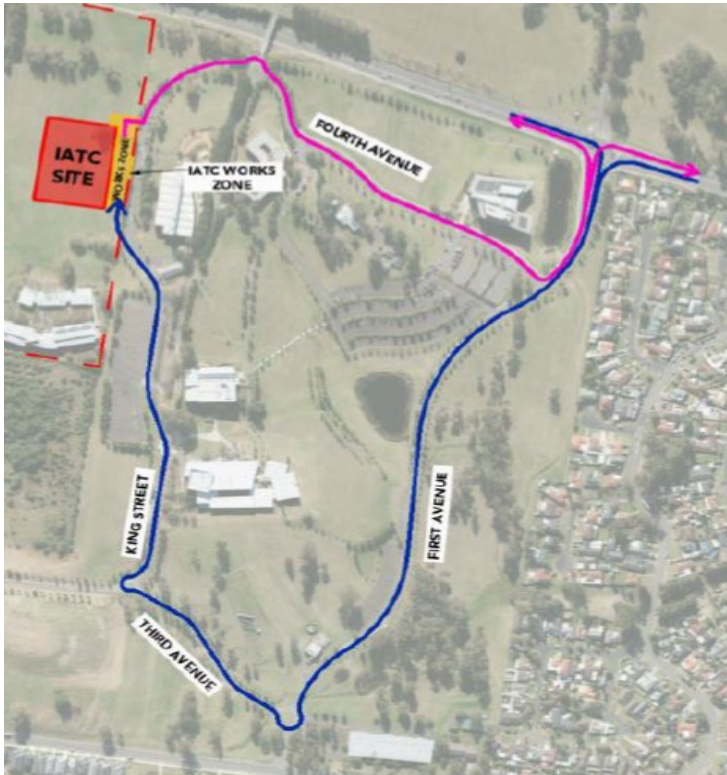
# TAFE NSW Nepean - Kingswood Campus Specific Risk Assessment and Traffic Control Plan





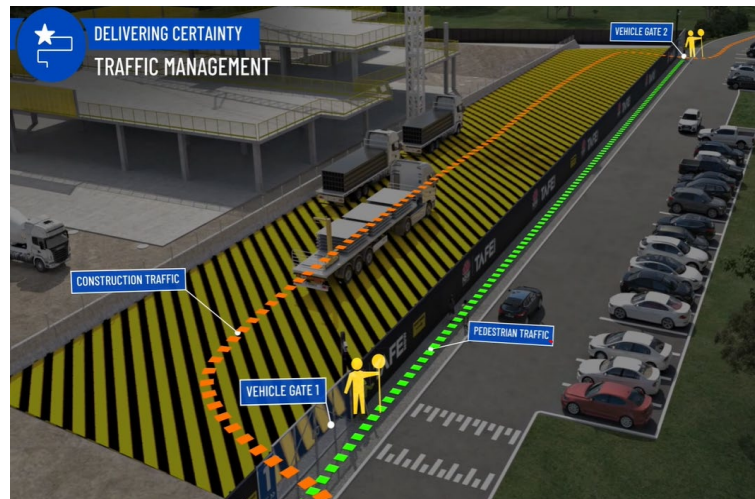
# CONSTRUCTION TRAFFIC ROUTE AND SITE ACCESS

## WESTERN SYDNEY UNIVERSITY WERRINGTON SOUTH



Blue = Construction traffic entry  
Pink = Construction traffic exit

Traffic control will be in place (as required) between:  
7am and 6pm Monday-Friday  
8am and 4pm Saturdays



IATC Construction site entry and exit



All construction vehicles will enter and exit the WSU Werrington South Campus in a controlled manner.

All construction vehicle parking will be maintained within the site compound with entry and exit through TAFE NSW Nepean Kingswood Campus.

No WSU parking will be affected due to the construction.

## KEY CONTACTS

For key project updates and information about the Institute of Applied Technology for Construction please visit the project website at

- [IATC project website](#)
- Phone: [1800 752 142](tel:1800752142)
- Email: [iat@tafensw.edu.au](mailto:iat@tafensw.edu.au)

**For all project related questions, concerns or complaints please contact:**

Cameron Lang, TAFE NSW Investment Project Director at  
[cameron.lang2@tafensw.edu.au](mailto:cameron.lang2@tafensw.edu.au) or 0408 406 919.

**For all day to day construction related question please contact:**

Pierce Brennan, ADCO Construction Senior Project Manager on 0419 422 566

Simon Brown, ADCO Construction Site Manager on 0419 012 704

Mitch Alexander, TAFE NSW Senior Project Manager (Ernst & Young) on 0428 440 555