

TAFENSW

IATC WEEKLY CONSTRUCTION STATUS UPDATE

INSTITUTE OF APPLIED TECHNOLOGY -
CONSTRUCTION (IATC) & MULTI-TRADES

4 November 2022

CONTEXT

TAFE NSW is delivering the Institute of Applied Technology - Construction; an \$84.5M Capital investment located at the TAFE NSW Nepean - Kingswood campus.

This new State of the Art, 5 Star Green Star Multi-trades facility will provide specialised training in construction, carpentry, electrical and plumbing, to support trades skills shortages in the Western Sydney Region.

The Institute of Applied Technology is a new education offering from the NSW Government, where leading educational institutions and industry will co-locate, co-design, and co-deliver theoretical and practical learning to empower people with the skills and experience they need to thrive in life and work. It will provide employable outcomes, transferrable skills, blended learning, and flexible pathways. This will ensure that NSW has a workforce ready to meet the needs of industry and future infrastructure demand.

Construction is well underway with completion due late March 2023.

THE WEEK THAT WAS

Structural column formwork remained a key focus, along with forming the stair and lift core walls. Final preparation of North-eastern Upper Ground Floor slab continued with a target concrete pour early next week. Strip-out for Lower and Upper level formwork continued, along with high-level services rough-ins, and continuation of internal block walls. The entire structure will continue to open up over the coming weeks seeing an increase in trade activity along with the placement of structural roofing steel.

OUR IATC ROADMAP



**IATC Open
For
Business**



Q3 2021

Q4 2021

Q1 2022

Q2 2022

Q3 2022

Q4 2022

Q1 & Q2 2023

**Contractor RTA
and
First Partner
Workshop**

1

2

**Collaboration Agreements
and Construction**

- Collaboration Agreements signed by Uni & principal industry partner
- Building construction commences

3

Education Model
Education Model agreed by
all partners

4

Operating Model

- Operating Model developed
- Product development
- Workforce planning
- Op Readiness plan refined

5

Marketing Campaign
IATC Marketing Campaign begins ahead
of enrolment period

6

**Commence Operational
Readiness**
Preparation for IAT opening

7

**Construction
Complete March 2023**

- Building handover end April
- Ready for business end May
- Multi-trades operations
commence Day 1 Semester 2

We are here

HIGHLIGHTS AND ACHIEVEMENTS (WE 5/11/22)

- Continuation of blockwork to various areas
- Stripping of formwork to Lower and Upper Ground floors
- Continued erection of steel reinforcement and formwork for roof columns, stair and lift core walls
- External façade works continued
- High-level services rough-in continued
- Civil site works continued
- Partial concrete pour to civil plumbing sandpit base
- Building services design coordination continued



High-level services installation

SITE PHOTOGRAPH (WE 5/11/22)



Site photograph

SITE PHOTOGRAPH (WE 5/11/22)



Easter façade opening



Internal block wall

SITE PHOTOGRAPH (WE 5/11/22)



Upper Ground Floor Electrotech Area



North-western Corner Facade

NEXT STEPS (7/11 - 12/11/2022)

- Continue stripping formwork
- Concrete to North-eastern Upper Ground Floor slab
- Continue blockwork to various areas
- Continue Level One columns
- Continue services rough-ins
- Continue stair core No.2 and lift core scaffolding and formwork
- Continue façade framing
- Continue civil ground services



Site Photograph

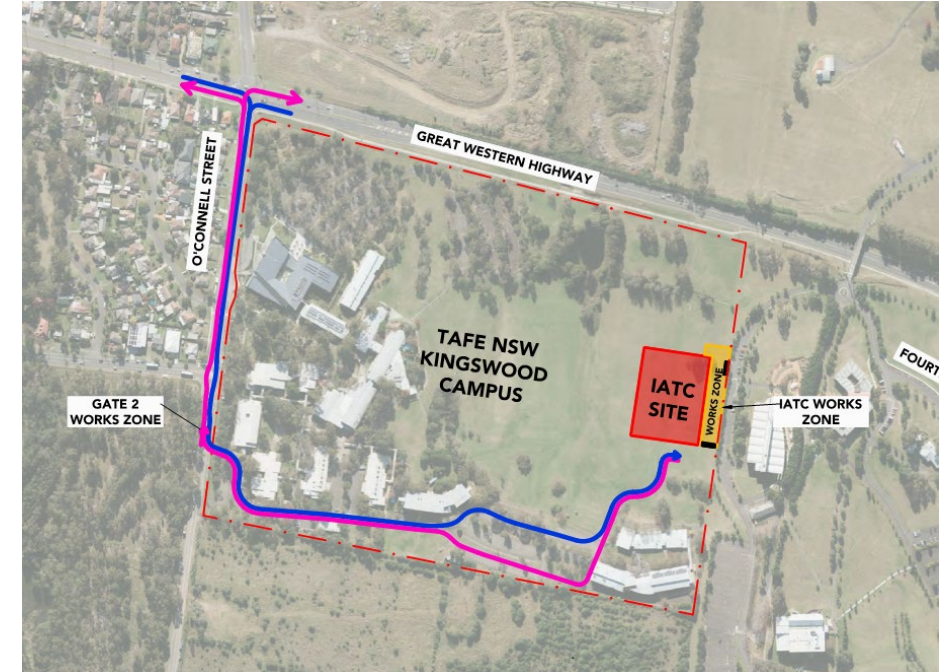
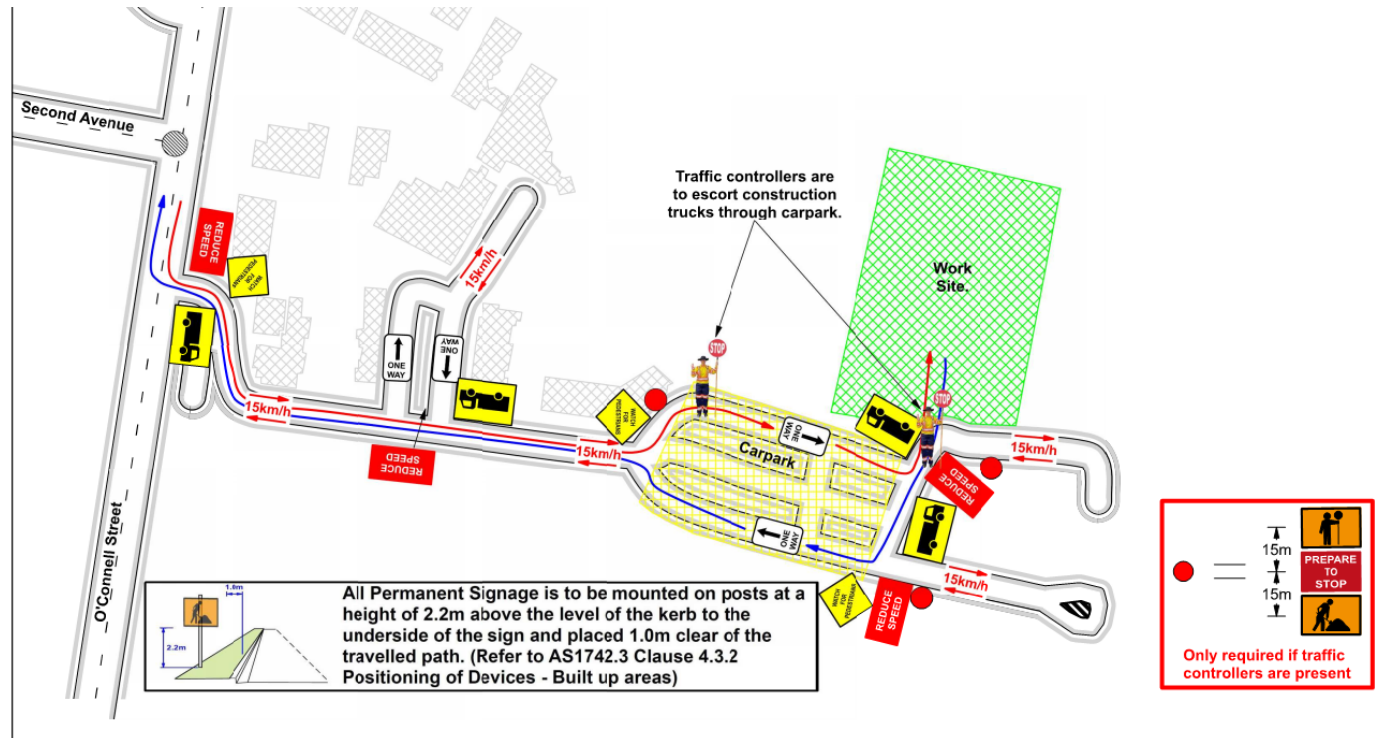
TRAFFIC MOVEMENTS (WC 7/11/22)

Traffic movement through Western Sydney University Werrington South Campus

	Monday 7/11/2022	Tuesday 8/11/2022	Wednesday 9/11/2022	Thursday 10/11/2022	Friday 11/11/2022	Saturday 12/11/2022
Description of Work Activities	Stripping formwork from concreted areas, placement of formwork and reinforcements, continue blockwork, services installation, and façade framing	Stripping formwork from concreted areas, placement of formwork and reinforcements, continue blockwork, services installation, and façade framing, concrete pours scheduled	Stripping formwork from concreted areas, placement of formwork and reinforcements, continue blockwork, services installation, and façade framing	Stripping formwork from concreted areas, placement of formwork and reinforcements, continue blockwork, services installation, and façade framing	Stripping formwork from concreted areas, placement of formwork and reinforcements, continue blockwork, services installation, and façade framing	Stripping formwork from concreted areas, placement of formwork and reinforcements, continue blockwork, services installation, and façade framing
Standing Traffic Control	Not required	Not required	Not required	Not required	Not required	Not Required
07.00am						
08.00am						
09.00am						
10.00am						
11.00am						
12.00pm	Deliveries of material expected throughout the day	Deliveries of concrete and material expected throughout the day	Deliveries of material expected throughout the day	Deliveries of material expected throughout the day	Deliveries of material expected throughout the day	Deliveries of material expected throughout the day
01.00pm						
02.00pm						
03.00pm						
04.00pm						
05.00pm						
06.00pm						

TAFE NSW NEPEAN – KINGSWOOD CAMPUS TRAFFIC PLAN

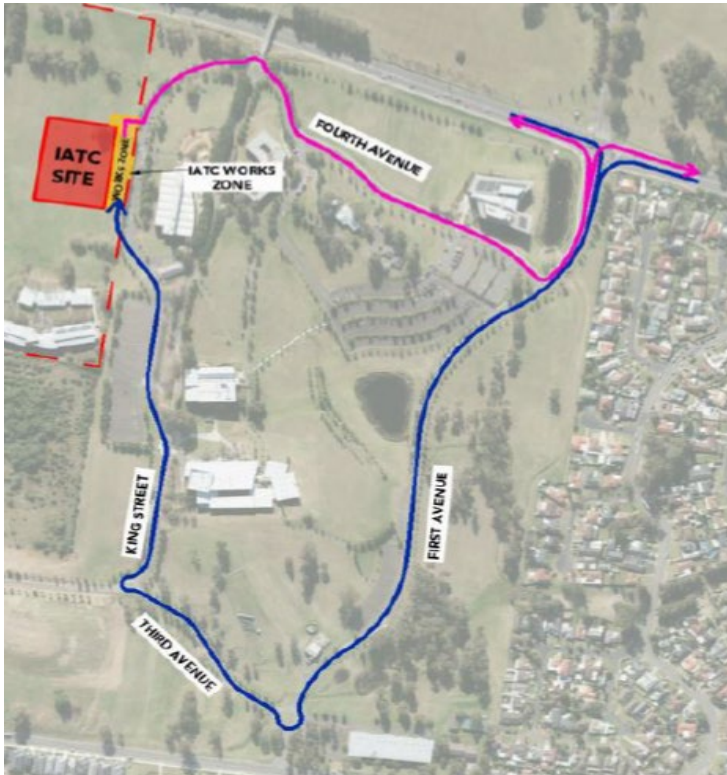
TAFE NSW Nepean - Kingswood Campus Specific Risk Assessment and Traffic Control Plan



Truck Access Route and Site Plan

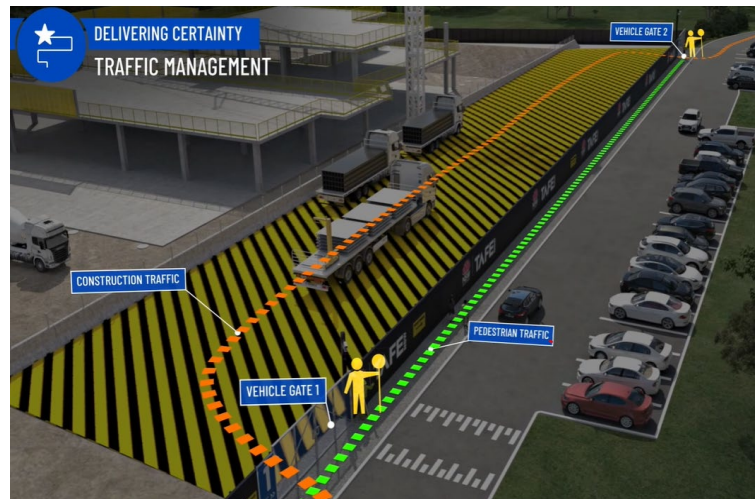
CONSTRUCTION TRAFFIC ROUTE AND SITE ACCESS

WESTERN SYDNEY UNIVERSITY WERRINGTON SOUTH



Blue = Construction traffic entry
Pink = Construction traffic exit

Traffic control will be in place (as required) between:
7am and 6pm Monday-Friday
8am and 4pm Saturdays



IATC Construction site entry and exit



All construction vehicles will enter and exit the WSU Werrington South Campus in a controlled manner.

All construction vehicle parking will be maintained within the site compound with entry and exit through TAFE NSW Nepean Kingswood Campus.

No WSU parking will be affected due to the construction.

KEY CONTACTS

For key project updates and information about the Institute of Applied Technology for Construction please visit the project website at

- [IATC project website](#)
- Phone: [1800 752 142](tel:1800752142)
- Email: iat@tafensw.edu.au

For all project related questions, concerns or complaints please contact:

Cameron Lang, TAFE NSW Investment Project Director at
cameron.lang2@tafensw.edu.au or 0408 406 919.

For all day to day construction related question please contact:

Pierce Brennan, ADCO Construction Senior Project Manager on 0419 422 566

Simon Brown, ADCO Construction Site Manager on 0419 012 704

Mitch Alexander, TAFE NSW Senior Project Manager (Ernst & Young) on 0428 440 555