

IATC Weekly Construction Status Update

Institute of Applied Technology -
Construction (IATC) & Multi-Trades

11 November 2022



Context



TAFE NSW is delivering the Institute of Applied Technology - Construction; an \$84.5M Capital investment located at the TAFE NSW Nepean - Kingswood campus.

This new State of the Art, 5 Star Green Star Multi-trades facility will provide specialised training in construction, carpentry, electrical and plumbing, to support trades skills shortages in the Western Sydney Region.

The Institute of Applied Technology is a new education offering from the NSW Government, where leading educational institutions and industry will co-locate, co-design, and co-deliver theoretical and practical learning to empower people with the skills and experience they need to thrive in life and work. It will provide employable outcomes, transferrable skills, blended learning, and flexible pathways. This will ensure that NSW has a workforce ready to meet the needs of industry and future infrastructure demand.

Construction is well underway with completion due late March 2023.

Our IATC Roadmap



Highlights and Achievements (Week ending 12/11/2022)

- Concrete pour to NE Upper Ground Floor
- Concrete pour of Level One mechanical plant room
- Continuation of blockwork to various areas
- Stripping of formwork to Lower and Upper Ground floors
- Continuation of steel reinforcement and formwork to Level One stair core No.2, lift core and columns
- Continuation of civil ground works
- Continuation of high-level services rough-in
- Continuation of external façade framing
- Concrete pour to civil sandpit base



External façade framing

Site Photograph (Week ending 12/11/2022)



Site Photograph (Week ending 12/11/2022)



Southern Workshop



Southern Workshop

Next Steps (14/11 – 19/11/2022)

- Continue stripping formwork
- Continue blockwork to various areas
- Continue steel reinforcement and formwork to Level One stair core No.2, lift core and columns, including target concrete pour
- Continue high-level services rough-ins
- Continue façade framing
- Continue civil ground services
- Commence placement of structural roofing steel



Traffic Movements (Week commencing 14/10/2022)

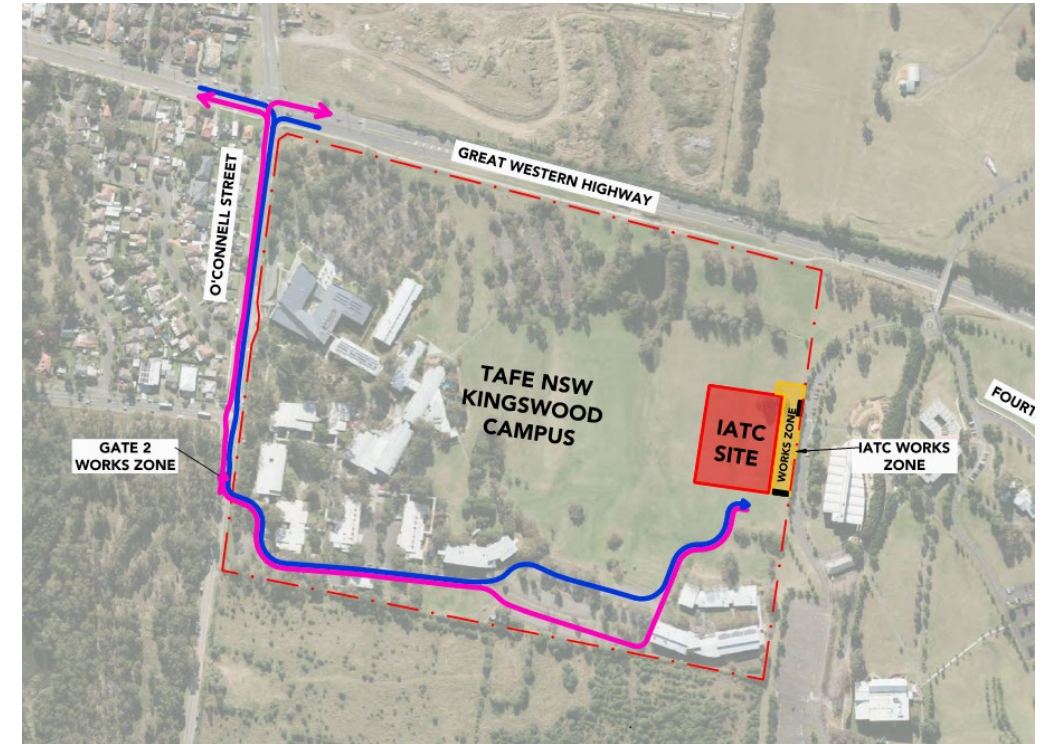
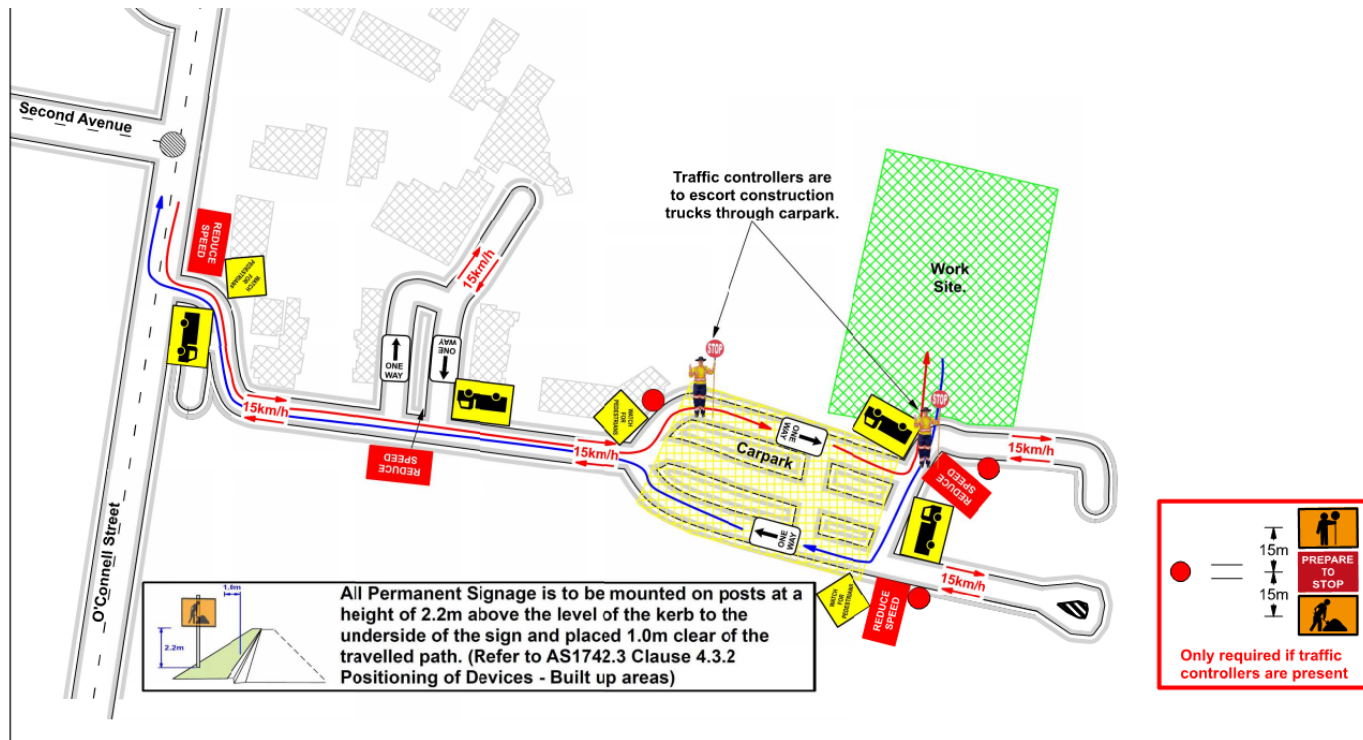
Traffic movement through Western Sydney University Werrington South Campus



	Monday 14/11/2022	Tuesday 15/11/2022	Wednesday 16/11/2022	Thursday 17/11/2022	Friday 18/11/2022	Saturday 19/11/2022
Description of Work Activities	Stripping formwork from concreted areas, placement of formwork and reinforcements, continue blockwork, services installation, and façade framing	Stripping formwork from concreted areas, placement of formwork and reinforcements, continue blockwork, services installation, and façade framing	Stripping formwork from concreted areas, placement of formwork and reinforcements, continue blockwork, services installation, and façade framing	Stripping formwork from concreted areas, placement of formwork and reinforcements, continue blockwork, services installation, and façade framing	Stripping formwork from concreted areas, placement of formwork and reinforcements, continue blockwork, services installation, and façade framing	Stripping formwork from concreted areas, placement of formwork and reinforcements, continue blockwork, services installation, and façade framing
Standing Traffic Control	Not required	Not required	Not required	Not required	Not required	Not Required
07.00am	Deliveries of material expected throughout the day	Deliveries of material expected throughout the day	Deliveries of material expected throughout the day	Deliveries of material expected throughout the day	Deliveries of material expected throughout the day	Deliveries of material expected throughout the day
08.00am						
09.00am						
10.00am						
11.00am						
12.00pm						
01.00pm						
02.00pm						
03.00pm						
04.00pm						
05.00pm						
06.00pm						

TAFE NSW Nepean – Kingswood Campus Traffic Plan

TAFE NSW Nepean - Kingswood Campus Specific Risk Assessment and Traffic Control Plan

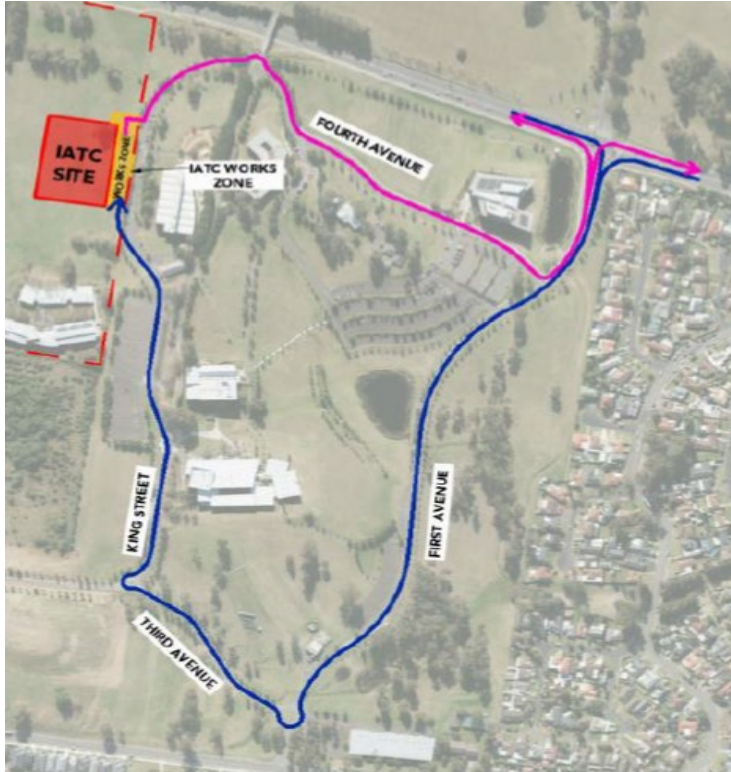


Truck Access Route and Site Plan

TAFE NSW Nepean – Kingswood Campus Traffic Plan



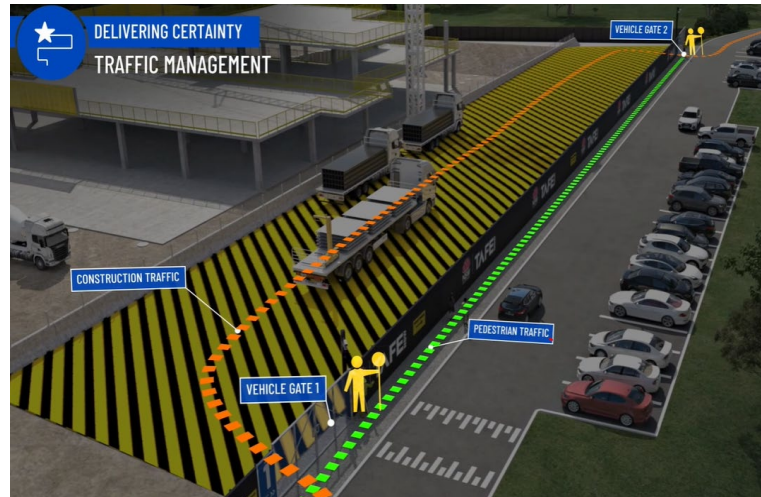
Western Sydney University Werrington South



Blue = Construction traffic entry
Pink = Construction traffic exit

Institute of
Applied Technology
Construction

Traffic control will be in place (as required)
between:
7am and 6pm Monday-Friday
8am and 4pm Saturdays



IATC Construction site entry and exit



All construction vehicles will enter and exit the WSU Werrington South Campus in a controlled manner.

All construction vehicle parking will be maintained within the site compound with entry and exit through TAFE NSW Nepean Kingswood Campus.

No WSU parking will be affected due to the construction.

Key Contacts



- **For key project updates and information about the Institute of Applied Technology for Construction**

- tafensw.edu.au/instituteofappliedtechnology
- Phone: 1800 752 142
- Email: iat@tafensw.edu.au

For all project related questions, concerns or complaints please contact:

Cameron Lang
TAFE NSW Investment Project Director
Email: cameron.lang2@tafensw.edu.au
Phone: 0408 406 919.

For all day to day construction related question please contact:

Pierce Brennan,
ADCO Construction Senior Project Manager
Phone: 0419 422 566

Mitch Alexander
TAFE NSW Senior Project Manager (Ernst & Young)
Phone: 0428 440 555