

IAT-C Weekly Construction Status Update

Institute of Applied Technology -
Construction (IATC) & Multi-Trades

3 February 2023



Notice to all campus users

Dear all,

As you may have seen, works to upgrade the Gate 2 entry and maintenance of the existing roadway are well underway. These works are required to support the safe movement of vehicle traffic through the southern side of the campus.

From Monday 6 February through to Friday 10 February 2023, night works to remove and replace the road surface will begin. Large mobile plant and equipment will be seen parked through the day in the Gate 2 entry carpark. These carpark areas will be closed for vehicle parking until the road works are completed.

To ensure the safety of all campus users and to expedite civil the works, Gate 2 will be closed nightly from 6:30pm and will reopen for business as usual the following morning. Please ensure you have exited Gate 2 by no later than 6:30pm to help facilitate the night works. Anyone planning to stay later or attending for night classes please use the carpark via the Gate 1 entry.

We appreciate your understanding and are undertaking these works to support all campus users and to ensure TAFE NSW provide the best user experience possible. Please respect all contractor and traffic control staff as they are here to help make this a smooth and successful process.

Context



TAFE NSW is delivering the Institute of Applied Technology - Construction; an \$84.5M Capital investment located at the TAFE NSW Nepean - Kingswood campus.

This new State of the Art, 5 Star Green Star Multi-trades facility will provide specialised training in construction, carpentry, electrical and plumbing, to support trades skills shortages in the Western Sydney Region.

The Institute of Applied Technology is a new education offering from the NSW Government, where leading educational institutions and industry will co-locate, co-design, and co-deliver theoretical and practical learning to empower people with the skills and experience they need to thrive in life and work. It will provide employable outcomes, transferrable skills, blended learning, and flexible pathways. This will ensure that NSW has a workforce ready to meet the needs of industry and future infrastructure demand.

The TAFE NSW Multi-trades disciplines of Plumbing, Carpentry, Electrical and Construction will be commencing operations from Day 1, Semester 2, 2023.

Our IAT-C Roadmap



Highlights and Achievements (Week ending 4/02/2023)

- Continuation of blockwork to various areas
- Continuation of steel reinforcement and formwork to various areas
- Continuation of civil ground works
- Continuation of high-level services rough-in
- Continuation of external façade and glazing framing
- Continuation of internal partition framing
- Continuation of structural steel roof framing
- Preparation for further concrete slabs
- Continuation of permanent water and gas connections
- Continuation of internal road widening and asphalt maintenance



External façade panels (GRC)

Site Photograph (Week ending 4/02/2023)



Centra Atrium Stairs



Outdoor workshop concrete pour

Site Photograph (Week ending 4/02/2023)



Next Steps (6/02 – 11/02/2023)

- Continue blockwork to various areas
- Complete concrete to columns
- Continue high-level services rough-ins
- Continue external façade and glazing framing
- Continue civil ground works
- Continue placement of structural roofing steel
- Continue internal partition framing
- Continue plant room waterproofing
- Continue roof sheeting preparation
- Continue internal road work upgrade
- Continue permanent water and gas connections
- Preparation for further concrete slabs



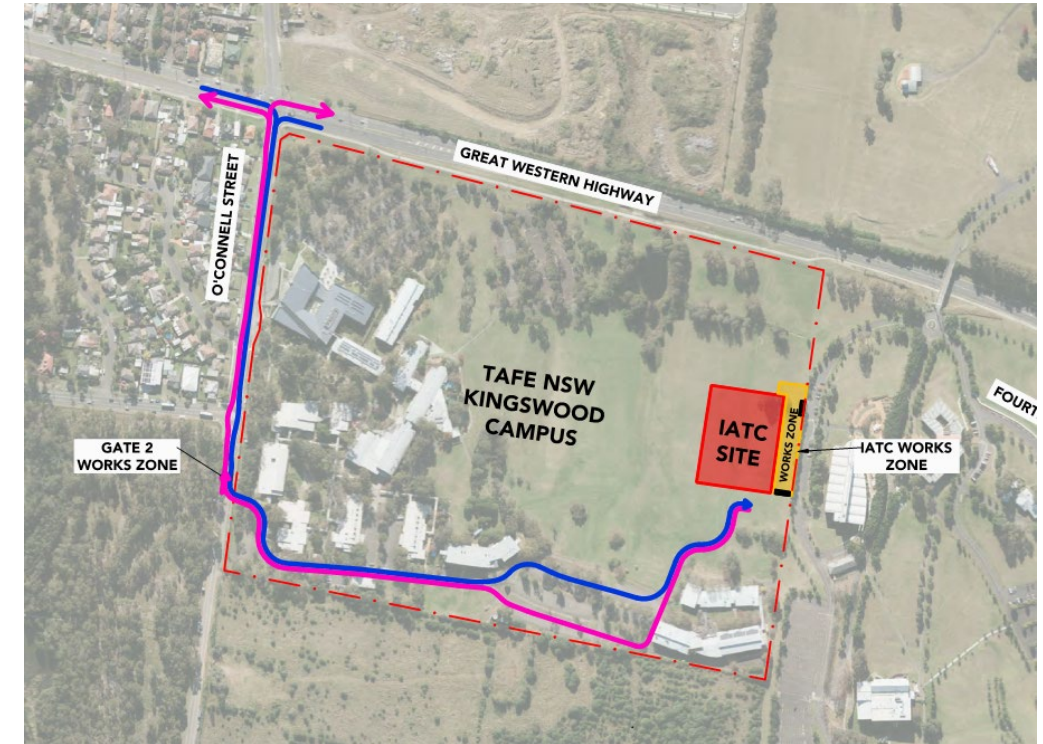
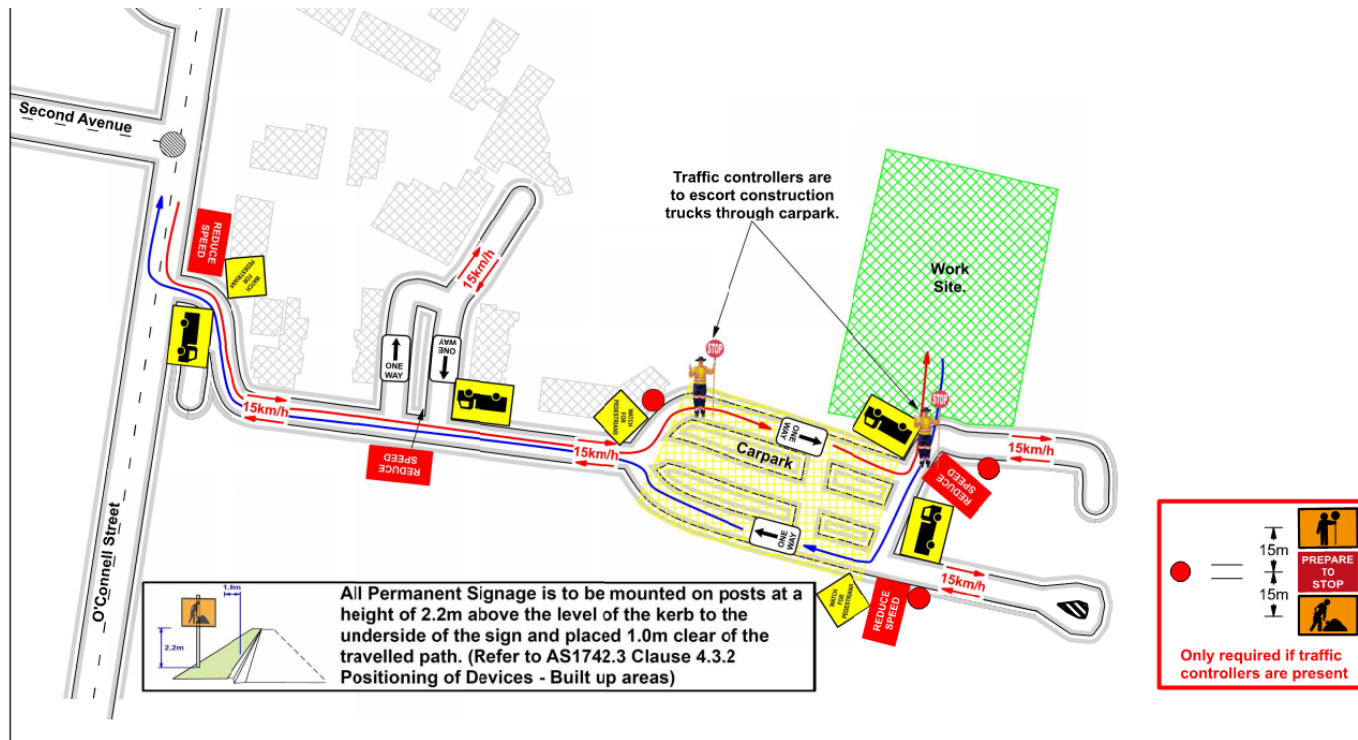
Traffic Movements (Week commencing 6/02/2023)

Traffic movement through Western Sydney University Werrington South Campus

	Monday 6/02/2023	Tuesday 7/02/2023	Wednesday 8/02/2023	Thursday 9/02/2023	Friday 10/2/2023	Saturday 11/02/2023
Description of Work Activities	Continue blockwork, services installation, façade and glazing framing, structural roofing steel, internal partition framing	Continue blockwork, services installation, façade and glazing framing, structural roofing steel, internal partition framing	Continue blockwork, services installation, façade and glazing framing, structural roofing steel, internal partition framing	Continue blockwork, services installation, façade and glazing framing, structural roofing steel, internal partition framing	Continue blockwork, services installation, façade and glazing framing, structural roofing steel, internal partition framing	Continue blockwork, services installation, façade and glazing framing, structural roofing steel, internal partition framing
Standing Traffic Control	Not required	Not required	Not required	Not required	Not required	Not required
07.00am	Deliveries of material expected throughout the day	Deliveries of material expected throughout the day	Deliveries of material expected throughout the day	Deliveries of material expected throughout the day	Deliveries of material expected throughout the day	Deliveries of material expected throughout the day
08.00am						
09.00am						
10.00am						
11.00am						
12.00pm						
01.00pm						
02.00pm						
03.00pm						
04.00pm						
05.00pm						
06.00pm						

TAFE NSW Nepean – Kingswood Campus Traffic Plan

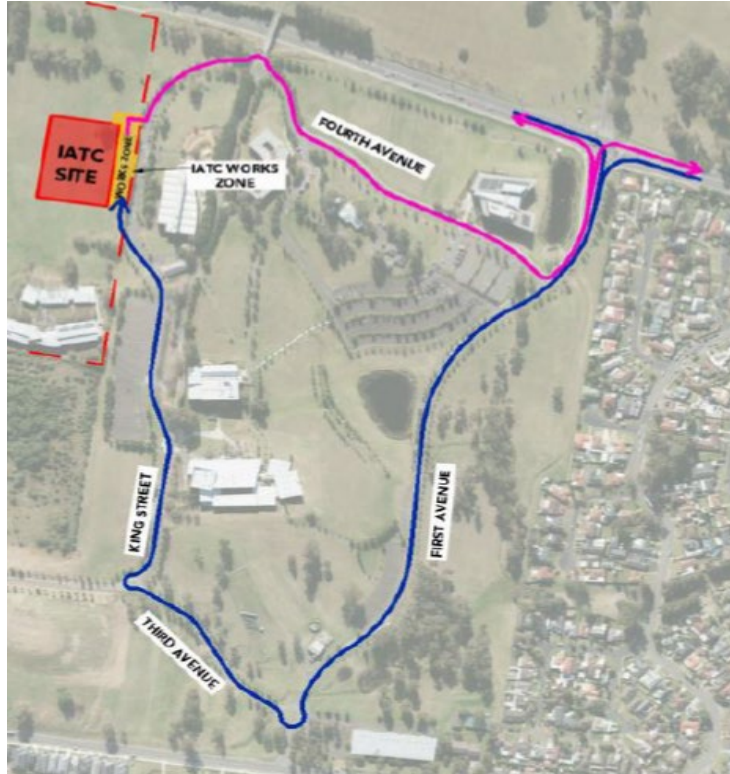
TAFE NSW Nepean - Kingswood Campus Specific Risk Assessment and Traffic Control Plan



Truck Access Route and Site Plan

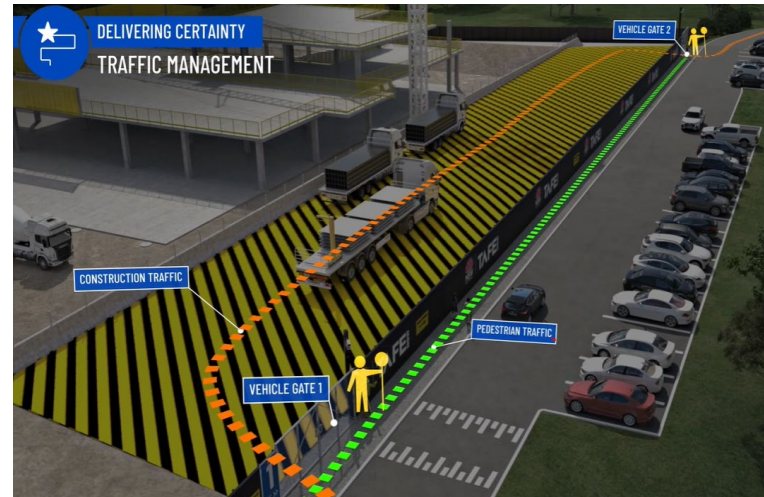
TAFE NSW Nepean – Kingswood Campus Traffic Plan

Western Sydney University Werrington South



Blue = Construction traffic entry
Pink = Construction traffic exit

Traffic control will be in place (as required)
between:
7am and 6pm Monday-Friday
8am and 4pm Saturdays



IATC Construction site entry and exit



All construction vehicles will enter and exit the WSU Werrington South Campus in a controlled manner.

All construction vehicle parking will be maintained within the site compound with entry and exit through TAFE NSW Nepean Kingswood Campus.

No WSU parking will be affected due to the construction.

Key Contacts

- **For key project updates and information about the Institute of Applied Technology - Construction**

- tafensw.edu.au/instituteofappliedtechnology
- Phone: 1800 752 142
- Email: iat@tafensw.edu.au

For all project related questions, concerns or complaints please contact:

Cameron Lang
TAFE NSW Investment Project Director
Email: cameron.lang2@tafensw.edu.au
Phone: 0408 406 919

For all day to day construction related question please contact:

Pierce Brennan,
ADCO Construction Senior Project Manager
Phone: 0419 422 566

Mitch Alexander
TAFE NSW Senior Project Manager (Ernst & Young)
Phone: 0428 440 555