

# IAT-C Weekly Construction Status Update

Institute of Applied Technology -  
Construction (IAT-C) & Multi-Trades

17 February 2023



# Context



TAFE NSW is delivering the Institute of Applied Technology - Construction; an \$84.5M Capital investment located at the TAFE NSW Nepean - Kingswood campus.

This new State of the Art, 5 Star Green Star Multi-trades facility will provide specialised training in construction, carpentry, electrical and plumbing, to support trades skills shortages in the Western Sydney Region.

The Institute of Applied Technology is a new education offering from the NSW Government, where leading educational institutions and industry will co-locate, co-design, and co-deliver theoretical and practical learning to empower people with the skills and experience they need to thrive in life and work. It will provide employable outcomes, transferrable skills, blended learning, and flexible pathways. This will ensure that NSW has a workforce ready to meet the needs of industry and future infrastructure demand.

The TAFE NSW Multi-trades disciplines of Plumbing, Carpentry, Electrical and Construction will be commencing operations from Day 1, Semester 2, 2023.

# Our IAT-C Roadmap





# Highlights and Achievements (Week ending 18/02/2023)

- Continuation of blockwork to various areas
- Continuation of steel reinforcement and formwork to various areas
- Continuation of civil ground works
- Continuation of high-level services rough-in
- Continuation of external façade and glazing framing
- Continuation of internal partition framing and internal wall sheeting
- Continuation of structural steel roof framing
- Commencement of roof sheeting
- Preparation for further concrete slabs
- Continuation of internal road widening and asphalt maintenance



Level 1 Glazing and façade framing



# Site Photograph (Week ending 18/02/2023)



Central Atrium roofing steel



# Site Photograph (Week ending 18/02/2023)





# Next Steps (20/02 – 25/02/2023)

- Continue blockwork to various areas
- Continue high-level services rough-ins
- Continue external façade and glazing framing
- Continue civil ground works
- Continue placement of structural roofing steel
- Continue roof sheeting
- Continue internal partition framing and sheeting
- Continue internal road work upgrade and Gate 2 works
- Preparation for further concrete slabs
- Continue civil sandpit works
- Commence stair 6 formwork



# Traffic Movements (Week commencing 20/02/2023)

## Traffic movement through Western Sydney University Werrington South Campus

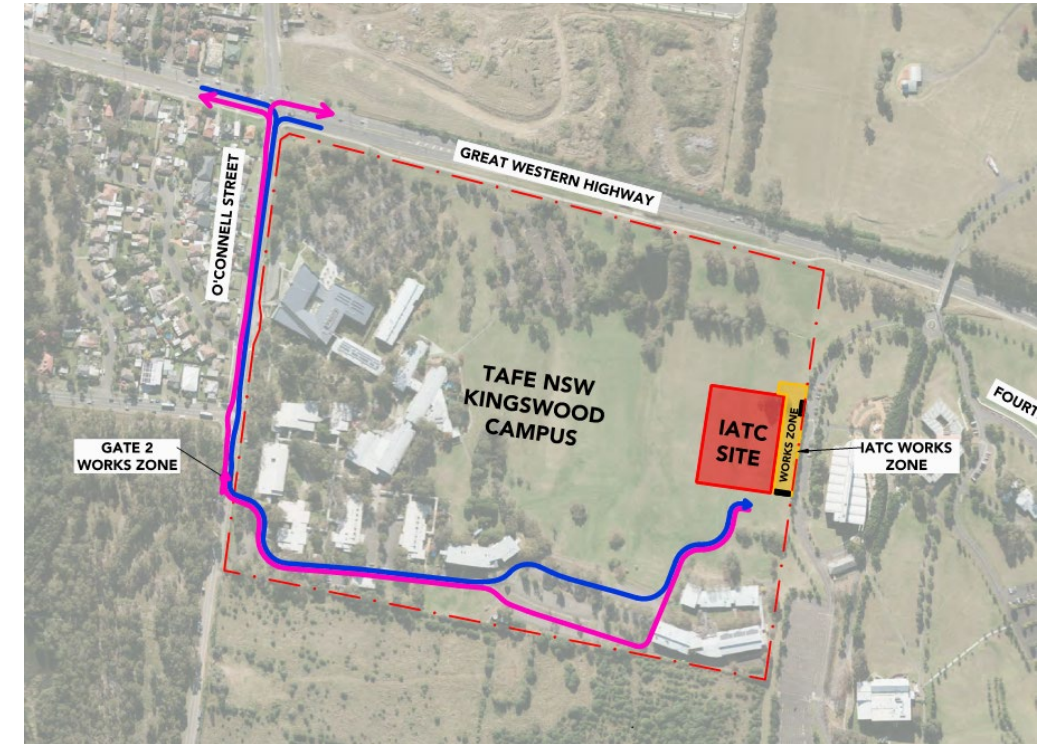
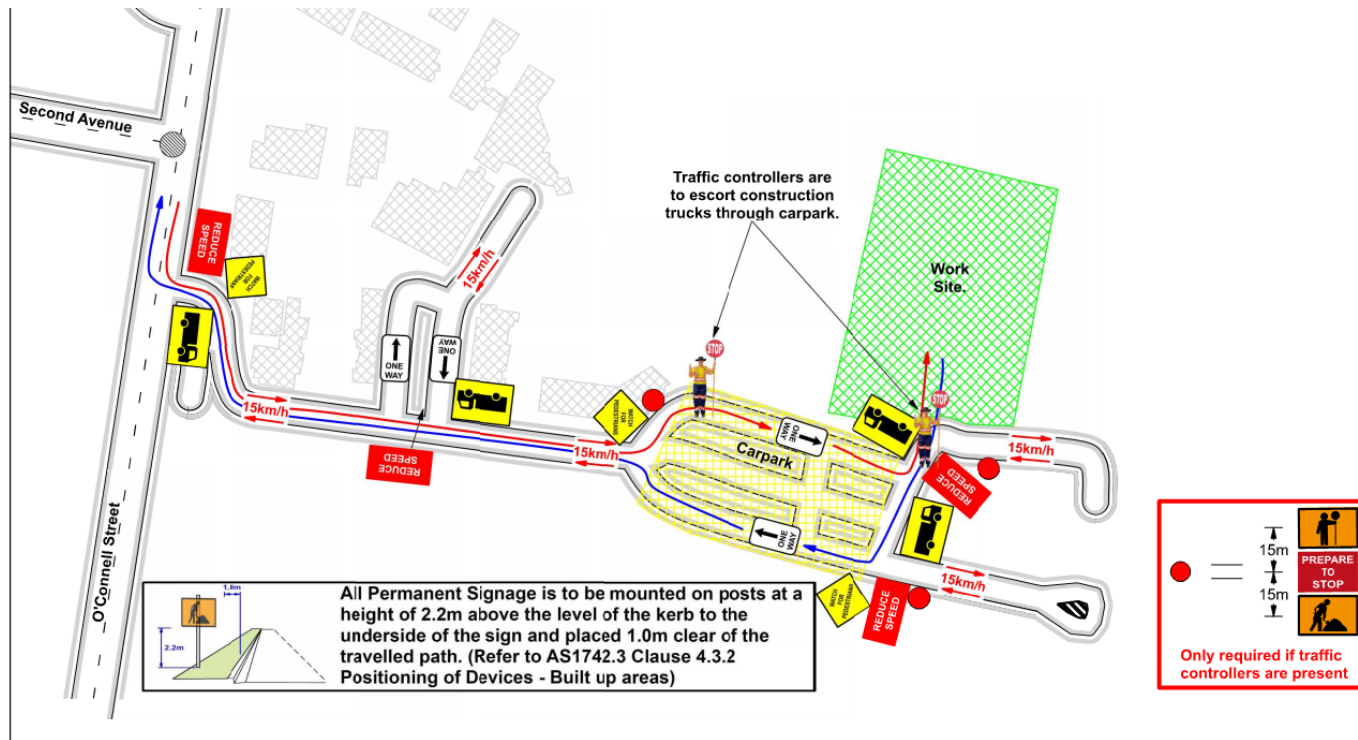
	Monday 20/02/2023	Tuesday 21/02/2023	Wednesday 22/02/2023	Thursday 23/02/2023	Friday 24/2/2023	Saturday 25/02/2023
Description of Work Activities	Continue blockwork, services installation, façade and glazing framing, structural roofing steel and sheeting, internal partition framing and sheeting, external civil works	Continue blockwork, services installation, façade and glazing framing, structural roofing steel and sheeting, internal partition framing and sheeting, external civil works	Continue blockwork, services installation, façade and glazing framing, structural roofing steel and sheeting, internal partition framing and sheeting, external civil works	Continue blockwork, services installation, façade and glazing framing, structural roofing steel and sheeting, internal partition framing and sheeting, external civil works	Continue blockwork, services installation, façade and glazing framing, structural roofing steel and sheeting, internal partition framing and sheeting, external civil works	Continue blockwork, services installation, façade and glazing framing, structural roofing steel and sheeting, internal partition framing and sheeting, external civil works
Standing Traffic Control	Not required	Not required	Not required	Not required	Not required	Not required
07.00am	Deliveries of material expected throughout the day	Deliveries of material expected throughout the day	Deliveries of material expected throughout the day	Deliveries of material expected throughout the day	Deliveries of material expected throughout the day	Deliveries of material expected throughout the day
08.00am						
09.00am						
10.00am						
11.00am						
12.00pm						
01.00pm						
02.00pm						
03.00pm						
04.00pm						
05.00pm						
06.00pm						



# TAFE NSW Nepean – Kingswood Campus Traffic Plan



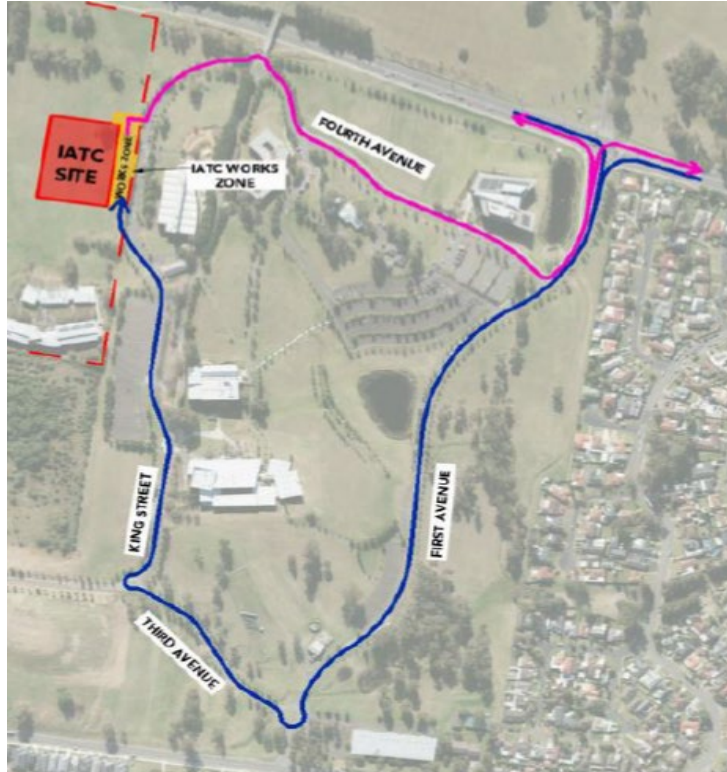
# TAFE NSW Nepean - Kingswood Campus Specific Risk Assessment and Traffic Control Plan



## Truck Access Route and Site Plan

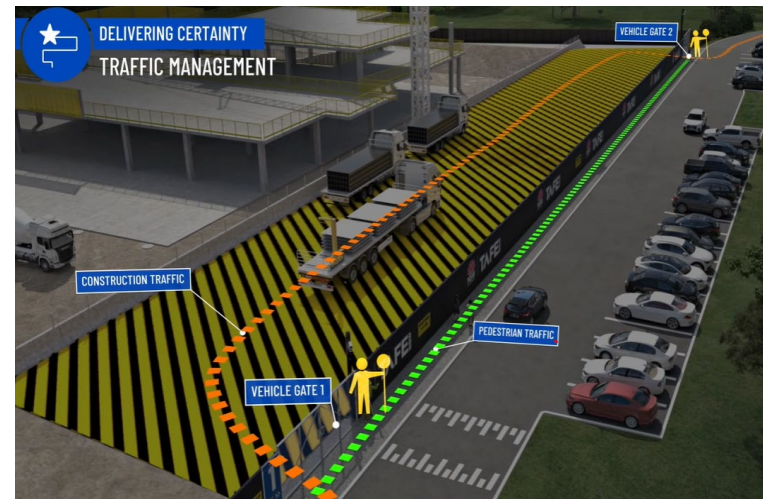
# TAFE NSW Nepean – Kingswood Campus Traffic Plan

Western Sydney University Werrington South



Blue = Construction traffic entry  
Pink = Construction traffic exit

Traffic control will be in place (as required)  
between:  
7am and 6pm Monday-Friday  
8am and 4pm Saturdays



IATC Construction site entry and exit



All construction vehicles will enter and exit the WSU Werrington South Campus in a controlled manner.

All construction vehicle parking will be maintained within the site compound with entry and exit through TAFE NSW Nepean Kingswood Campus.

No WSU parking will be affected due to the construction.



# Key Contacts

- **For key project updates and information about the Institute of Applied Technology - Construction**

- [tafensw.edu.au/instituteofappliedtechnology](https://tafensw.edu.au/instituteofappliedtechnology)
- Phone: 1800 752 142
- Email: [iat@tafensw.edu.au](mailto:iat@tafensw.edu.au)

**For all project related questions, concerns or complaints please contact:**

Cameron Lang  
TAFE NSW Investment Project Director  
Email: [cameron.lang2@tafensw.edu.au](mailto:cameron.lang2@tafensw.edu.au)  
Phone: 0408 406 919

**For all day to day construction related question please contact:**

Pierce Brennan,  
ADCO Construction Senior Project Manager  
Phone: 0419 422 566

Mitch Alexander  
TAFE NSW Senior Project Manager (Ernst & Young)  
Phone: 0428 440 555