

# IAT-C Weekly Construction Status Update

Institute of Applied Technology -  
Construction (IAT-C) & Multi-Trades

21 July 2023





# Context

TAFE NSW is delivering the Institute of Applied Technology - Construction; an \$84.5M Capital investment located at the TAFE NSW Nepean - Kingswood campus.

This new State of the Art, 5 Star Green Star Multi-trades facility will provide specialised training in construction, carpentry, electrical and plumbing, to support trades skills shortages in the Western Sydney Region.

The Institute of Applied Technology is a new education offering from the NSW Government, where leading educational institutions and industry will co-locate, co-design, and co-deliver theoretical and practical learning to empower people with the skills and experience they need to thrive in life and work. It will provide employable outcomes, transferrable skills, blended learning, and flexible pathways. This will ensure that NSW has a workforce ready to meet the needs of industry and future infrastructure demand.



# Highlights and Achievements (Week ending 22/07/2023)

- Continuation civil high risk area
- Continuation of civil ground works and external landscaped areas, stairs and pathways
- Continuation of services fit-off
- Continuation of external façade, glazing, and soffits
- Continuation of ceiling grids and lighting
- Continuation of painting
- Continuation of floor finishes throughout
- Continuation of joinery installation throughout
- Commencement of large Renlita doors and roller shutter Installation



Northern workshop



# Site Photograph (Week ending 22/07/2023)



Southern workshop roof and skylights



Tool store window



Northern workshop doors



# Site Photograph (Week ending 22/07/2023)



Plumbing gas lab



Café fitout



# Site Photograph (Week ending 22/07/2023)



# Next Steps (24/07 - 29/07/2023)

- Continuation civil high risk area
- Continuation of civil ground works and external landscaped areas, stairs and pathways
- Continuation of services fit-off
- Continuation of external façade, glazing, and soffits
- Continuation of ceiling grids and lighting
- Continuation of painting
- Continuation of floor finishes throughout
- Continuation of joinery installation throughout
- Continuation of large Renlita doors and roller shutter Installation



Auditorium



# Traffic Movements (Week commencing 24/07/2023)

Traffic movement through Western Sydney University Werrington South Campus

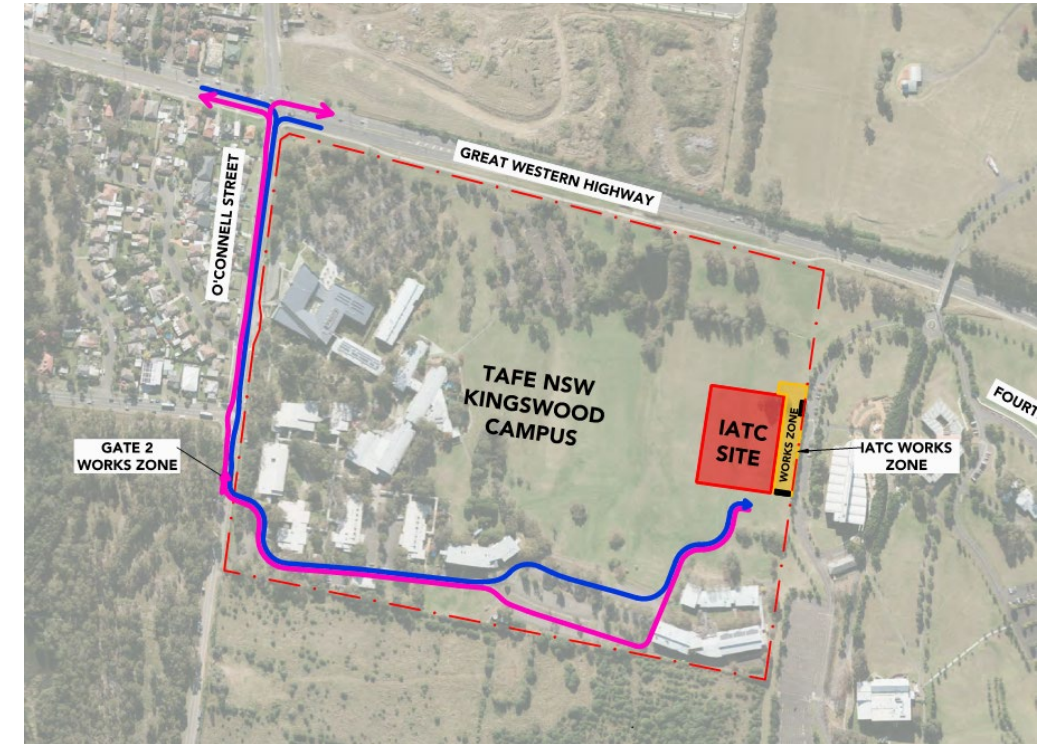
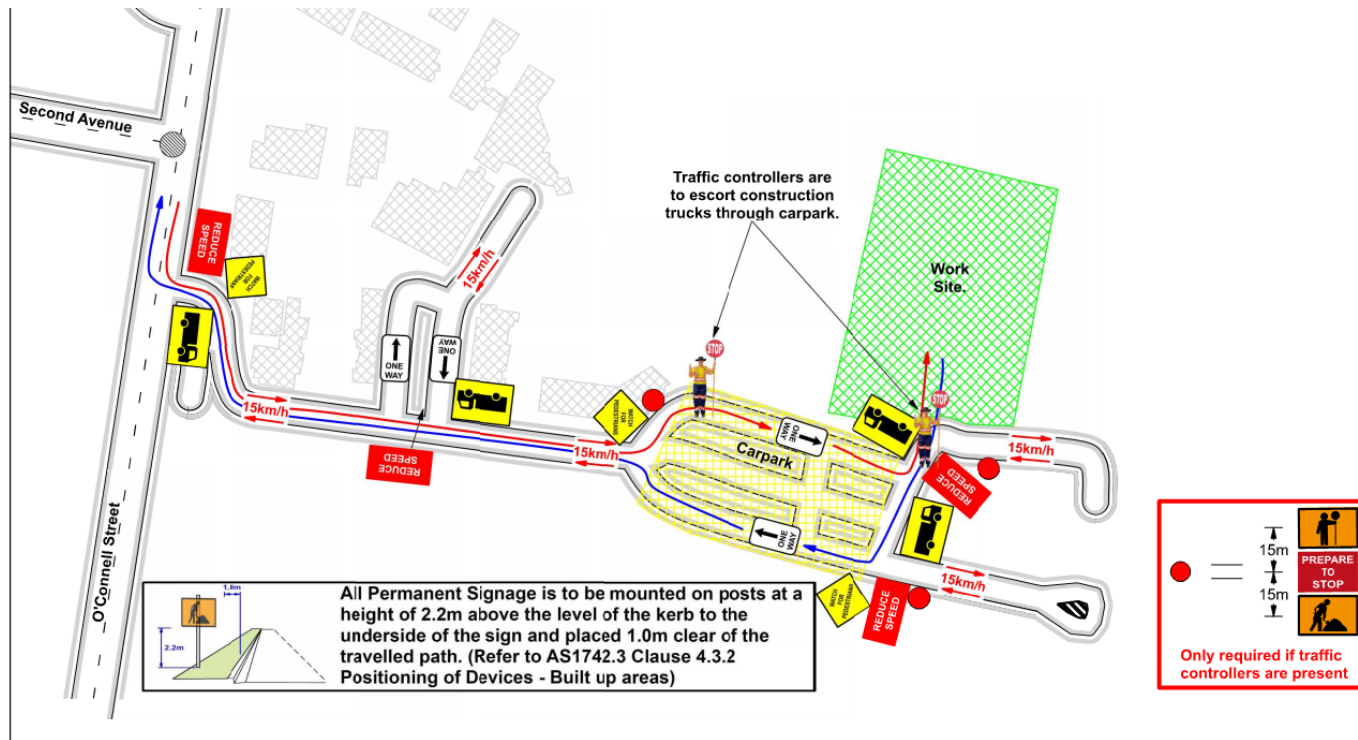
	Monday 24/07/2023	Tuesday 25/07/2023	Wednesday 26/07/2023	Thursday 27/07/2023	Friday 28/07/2023	Saturday 29/07/2023
Description of Work Activities	Fixed RDO	Continuation of high risk area, civil ground works and external landscaped areas, stairs and pathways, services fit-off, external façade, glazing, soffit linings, ceiling grids, lighting, essential services, painting, floor finishes, and joinery installation throughout	Continuation of high risk area, civil ground works and external landscaped areas, stairs and pathways, services fit-off, external façade, glazing, soffit linings, ceiling grids, lighting, essential services, painting, floor finishes, and joinery installation throughout	Continuation of high risk area, civil ground works and external landscaped areas, stairs and pathways, services fit-off, external façade, glazing, soffit linings, ceiling grids, lighting, essential services, painting, floor finishes, and joinery installation throughout	Continuation of high risk area, civil ground works and external landscaped areas, stairs and pathways, services fit-off, external façade, glazing, soffit linings, ceiling grids, lighting, essential services, painting, floor finishes, and joinery installation throughout	Continuation of high risk area, civil ground works and external landscaped areas, stairs and pathways, services fit-off, external façade, glazing, soffit linings, ceiling grids, lighting, essential services, painting, floor finishes, and joinery installation throughout
Standing Traffic Control	Not required	Not required	Not required	Not required	Not required	Not required
07.00am	Deliveries of material expected throughout the day	Deliveries of material expected throughout the day	Deliveries of material expected throughout the day	Deliveries of material expected throughout the day	Deliveries of material expected throughout the day	Deliveries of material expected throughout the day
08.00am						
09.00am						
10.00am						
11.00am						
12.00pm						
01.00pm						
02.00pm						
03.00pm						
04.00pm						
05.00pm						
06.00pm						



# TAFE NSW Nepean – Kingswood Campus Traffic Plan



# TAFE NSW Nepean - Kingswood Campus Specific Risk Assessment and Traffic Control Plan

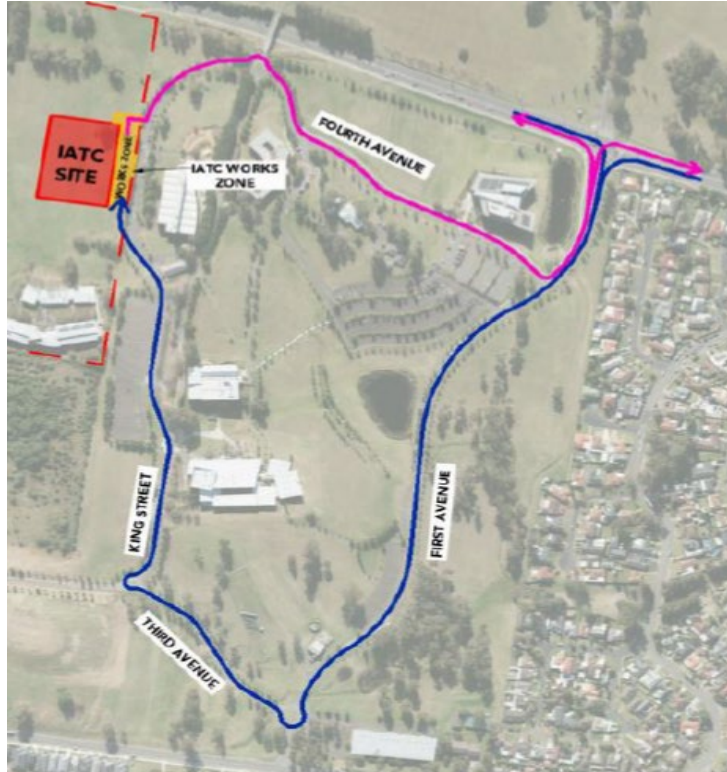


## Truck Access Route and Site Plan



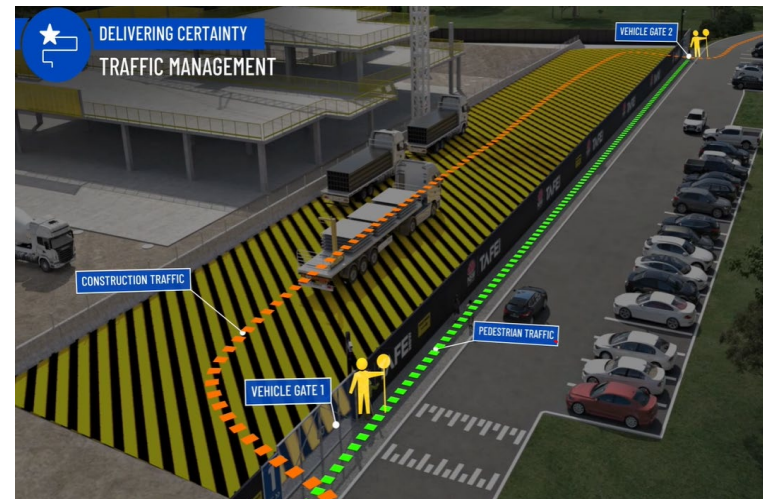
# TAFE NSW Nepean – Kingswood Campus Traffic Plan

Western Sydney University Werrington South



Blue = Construction traffic entry  
Pink = Construction traffic exit

Traffic control will be in place (as required)  
between:  
7am and 6pm Monday-Friday  
8am and 4pm Saturdays



IATC Construction site entry and exit



All construction vehicles will enter and exit the WSU Werrington South Campus in a controlled manner.

All construction vehicle parking will be maintained within the site compound with entry and exit through TAFE NSW Nepean Kingswood Campus.

No WSU parking will be affected due to the construction.



# Key Contacts

- **For key project updates and information about the Institute of Applied Technology - Construction**

- [tafensw.edu.au/instituteofappliedtechnology](https://tafensw.edu.au/instituteofappliedtechnology)
- Phone: 1800 752 142
- Email: [iat@tafensw.edu.au](mailto:iat@tafensw.edu.au)

**For all project related questions, concerns or complaints please contact:**

Cameron Lang  
TAFE NSW Investment Project Director  
Email: [cameron.lang2@tafensw.edu.au](mailto:cameron.lang2@tafensw.edu.au)  
Phone: 0408 406 919

**For all day to day construction related question please contact:**

Pierce Brennan,  
ADCO Construction Senior Project Manager  
Phone: 0419 422 566

Dion Richards  
TAFE NSW Senior Project Manager (Ernst & Young)  
Phone: 0423 765 833