

IAT-C Weekly Construction Status Update

Institute of Applied Technology -
Construction (IAT-C) & Multi-Trades

28 July 2023



Context

TAFE NSW is delivering the Institute of Applied Technology - Construction; an \$84.5M Capital investment located at the TAFE NSW Nepean - Kingswood campus.

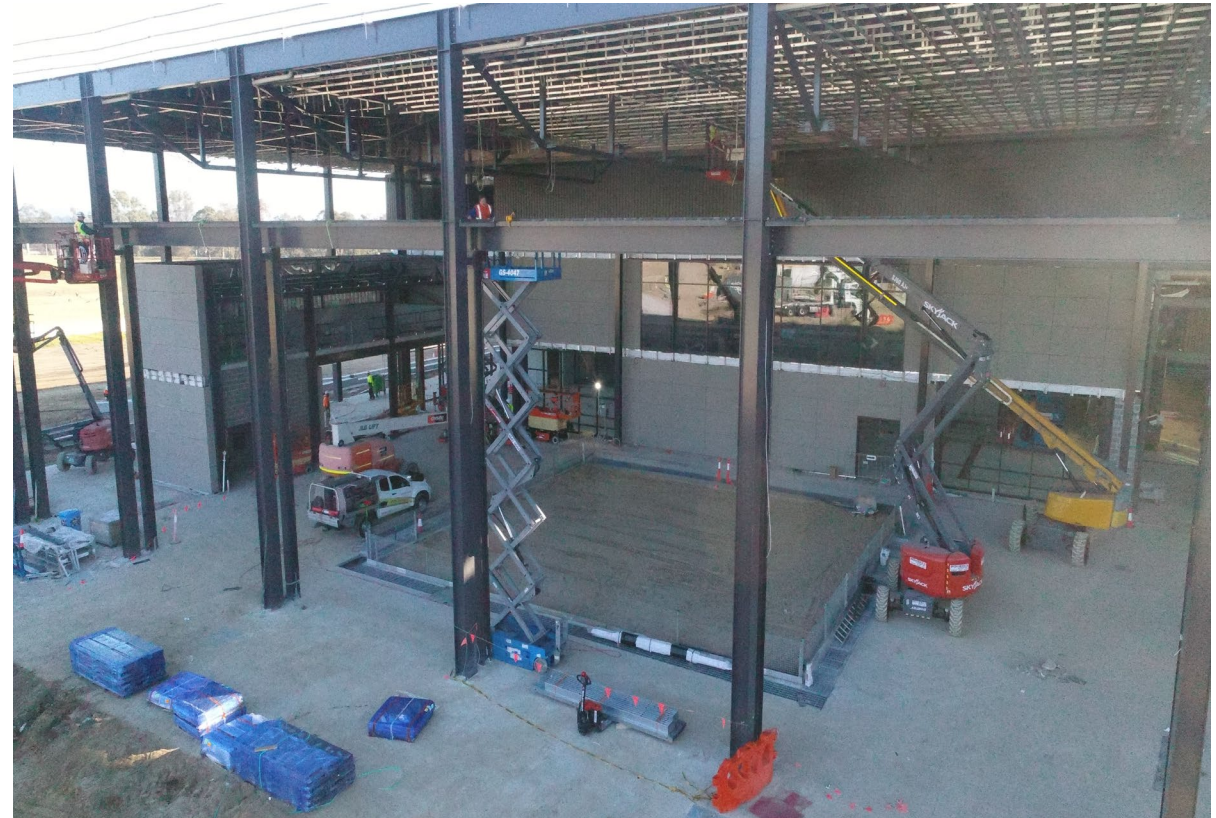
This new State of the Art, 5 Star Green Star Multi-trades facility will provide specialised training in construction, carpentry, electrical and plumbing, to support trades skills shortages in the Western Sydney Region.

The Institute of Applied Technology is a new education offering from the NSW Government, where leading educational institutions and industry will co-locate, co-design, and co-deliver theoretical and practical learning to empower people with the skills and experience they need to thrive in life and work. It will provide employable outcomes, transferrable skills, blended learning, and flexible pathways. This will ensure that NSW has a workforce ready to meet the needs of industry and future infrastructure demand.



Highlights and Achievements (Week ending 29/07/2023)

- Continuation civil high risk area
- Continuation of civil ground works and external landscaped areas, stairs and pathways
- Continuation of services fit-off
- Continuation of external façade, glazing, and soffits
- Continuation of ceiling grids and lighting
- Continuation of painting
- Continuation of floor finishes throughout
- Continuation of joinery installation throughout
- Continuation of large Renlita doors and roller shutter Installation
- Commencement of installation of Gantry crane



Southern outdoor workshop

Site Photograph (Week ending 28/07/2023)



Site Photograph (Week ending 28/07/2023)



Architectural Render



Next Steps (31/07 - 5/08/2023)

- Continuation civil high risk area
- Continuation of civil ground works and external landscaped areas, stairs and pathways
- Continuation of services fit-off
- Continuation of external façade, glazing, and soffits
- Continuation of ceiling grids and lighting
- Continuation of painting
- Continuation of floor finishes throughout
- Continuation of joinery installation throughout
- Continuation of large Renlita doors and roller shutter Installation
- Continuation of Gantry crane installation



Landscaping

Traffic Movements (Week commencing 01/08/2023)

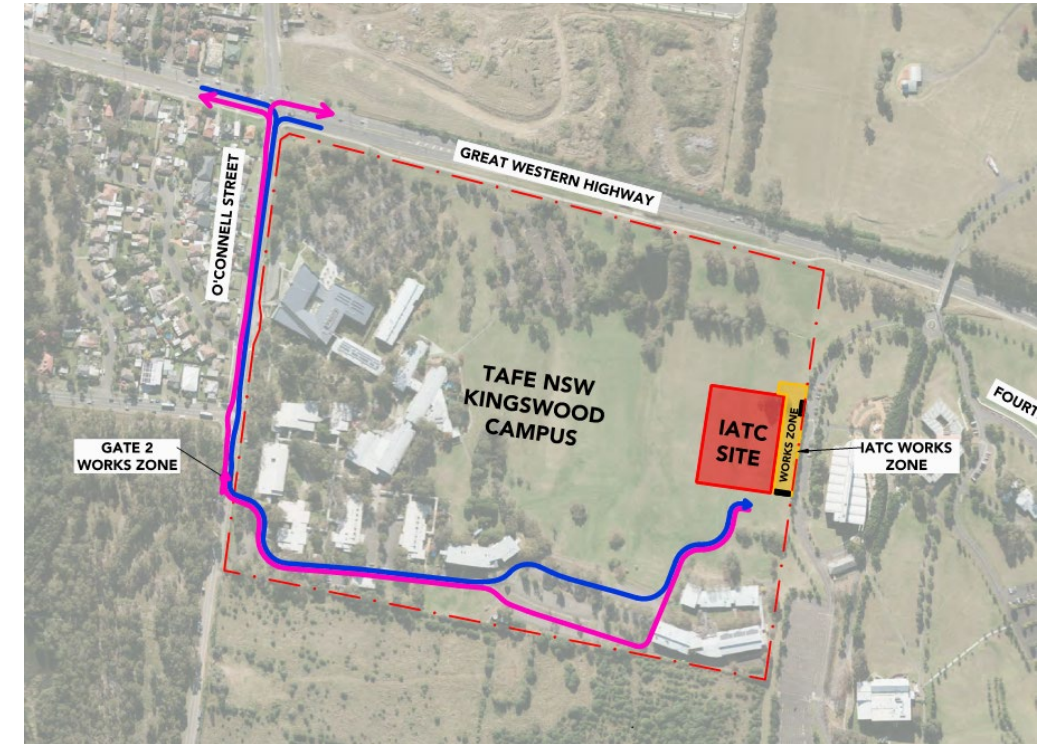
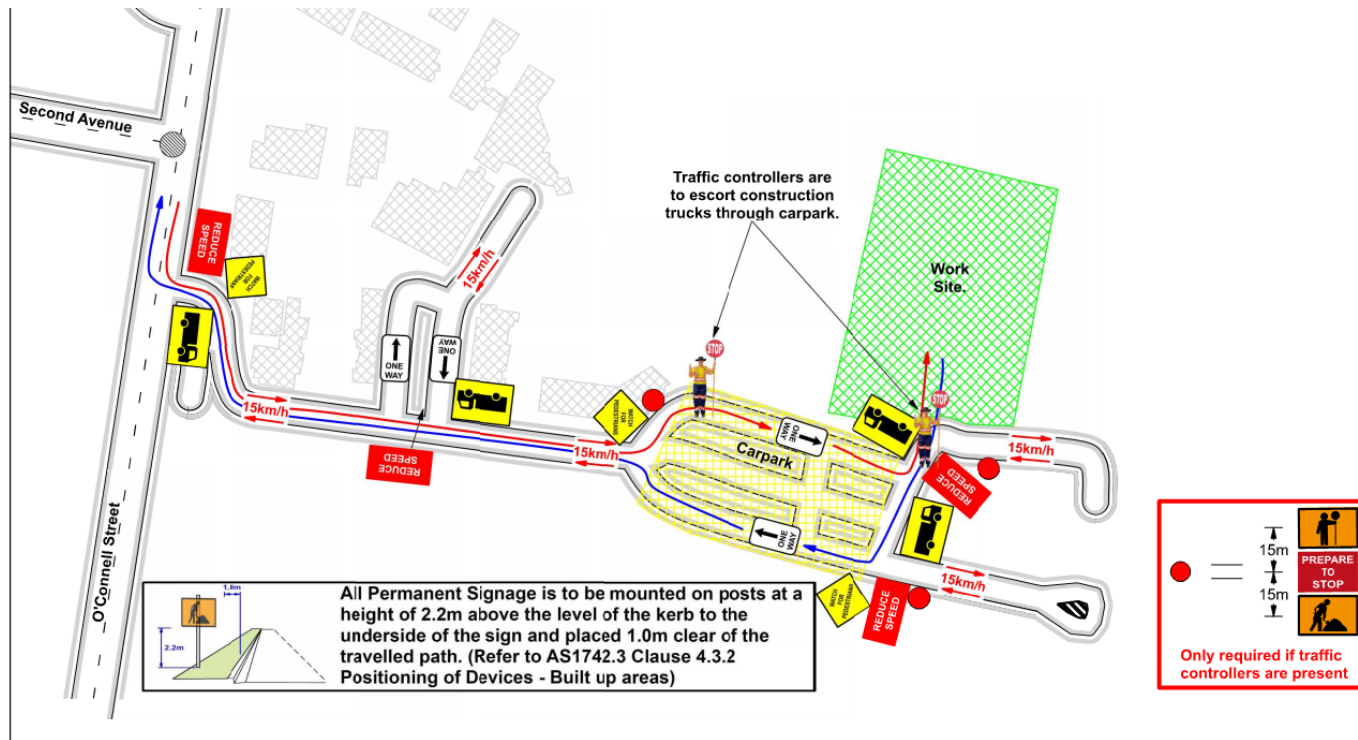
Traffic movement through Western Sydney University Werrington South Campus

	Monday 31/07/2023	Tuesday 1/08/2023	Wednesday 2/08/2023	Thursday 3/08/2023	Friday 4/08/2023	Saturday 5/08/2023
Description of Work Activities	Continuation of high risk area, civil ground works and external landscaped areas, stairs and pathways, services fit-off, external façade, glazing, soffit linings, ceiling grids, lighting, essential services, painting, floor finishes, and joinery installation throughout	Continuation of high risk area, civil ground works and external landscaped areas, stairs and pathways, services fit-off, external façade, glazing, soffit linings, ceiling grids, lighting, essential services, painting, floor finishes, and joinery installation throughout	Continuation of high risk area, civil ground works and external landscaped areas, stairs and pathways, services fit-off, external façade, glazing, soffit linings, ceiling grids, lighting, essential services, painting, floor finishes, and joinery installation throughout	Continuation of high risk area, civil ground works and external landscaped areas, stairs and pathways, services fit-off, external façade, glazing, soffit linings, ceiling grids, lighting, essential services, painting, floor finishes, and joinery installation throughout	Continuation of high risk area, civil ground works and external landscaped areas, stairs and pathways, services fit-off, external façade, glazing, soffit linings, ceiling grids, lighting, essential services, painting, floor finishes, and joinery installation throughout	Continuation of high risk area, civil ground works and external landscaped areas, stairs and pathways, services fit-off, external façade, glazing, soffit linings, ceiling grids, lighting, essential services, painting, floor finishes, and joinery installation throughout
Standing Traffic Control	Not required	Not required	Not required	Not required	Not required	Not required
07.00am	Deliveries of material expected throughout the day	Deliveries of material expected throughout the day	Deliveries of material expected throughout the day	Deliveries of material expected throughout the day	Deliveries of material expected throughout the day	Deliveries of material expected throughout the day
08.00am						
09.00am						
10.00am						
11.00am						
12.00pm						
01.00pm						
02.00pm						
03.00pm						
04.00pm						
05.00pm						
06.00pm						

TAFE NSW Nepean – Kingswood Campus Traffic Plan



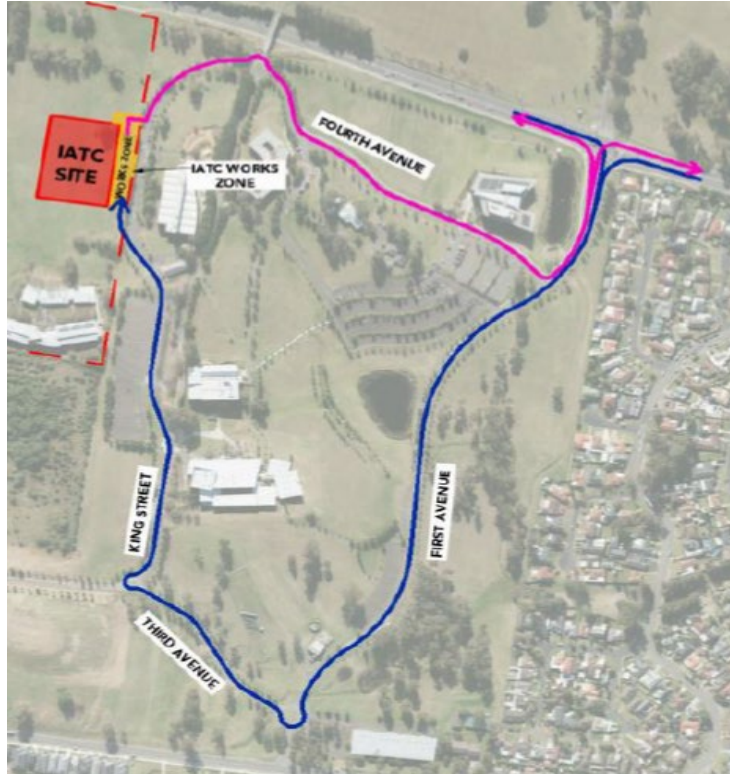
TAFE NSW Nepean - Kingswood Campus Specific Risk Assessment and Traffic Control Plan



Truck Access Route and Site Plan

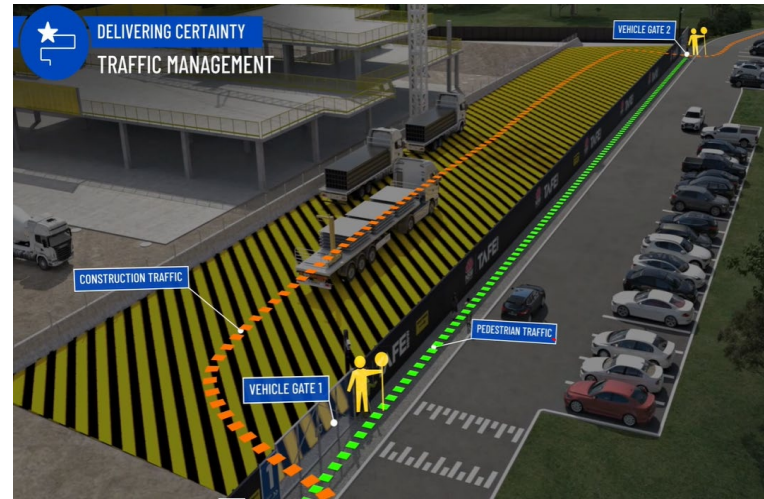
TAFE NSW Nepean – Kingswood Campus Traffic Plan

Western Sydney University Werrington South



Blue = Construction traffic entry
Pink = Construction traffic exit

Traffic control will be in place (as required)
between:
7am and 6pm Monday-Friday
8am and 4pm Saturdays



IATC Construction site entry and exit



All construction vehicles will enter and exit the WSU Werrington South Campus in a controlled manner.

All construction vehicle parking will be maintained within the site compound with entry and exit through TAFE NSW Nepean Kingswood Campus.

No WSU parking will be affected due to the construction.

Key Contacts

- **For key project updates and information about the Institute of Applied Technology - Construction**

- tafensw.edu.au/instituteofappliedtechnology
- Phone: 1800 752 142
- Email: iat@tafensw.edu.au

For all project related questions, concerns or complaints please contact:

Cameron Lang
TAFE NSW Investment Project Director
Email: cameron.lang2@tafensw.edu.au
Phone: 0408 406 919

For all day to day construction related question please contact:

Pierce Brennan,
ADCO Construction Senior Project Manager
Phone: 0419 422 566

Dion Richards
TAFE NSW Senior Project Manager (Ernst & Young)
Phone: 0423 765 833