

IAT-C Weekly Construction Status Update

Institute of Applied Technology -
Construction (IAT-C) & Multi-Trades

15 September 2023



Context

TAFE NSW is delivering the Institute of Applied Technology - Construction; an \$84.5M Capital investment located at the TAFE NSW Nepean - Kingswood campus.

This new State of the Art, 5 Star Green Star Multi-trades facility will provide specialised training in construction, carpentry, electrical and plumbing, to support trades skills shortages in the Western Sydney Region.

The Institute of Applied Technology is a new education offering from the NSW Government, where leading educational institutions and industry will co-locate, co-design, and co-deliver theoretical and practical learning to empower people with the skills and experience they need to thrive in life and work. It will provide employable outcomes, transferrable skills, blended learning, and flexible pathways. This will ensure that NSW has a workforce ready to meet the needs of industry and future infrastructure demand.



Highlights and Achievements (Week ending 16/09/2023)

- Continuation civil high-risk area
- Continuation of civil ground works and external landscaped areas, stairs, driveway, carpark and pathways
- Continuation of services fit-off
- Completion of external façade, glazing, and soffits
- Completion of ceiling grids and lighting
- Continuation of joinery, painting, and floor finishes
- Completion of external concrete to building perimeter
- Continuation of Café fitout
- Completion of workshop services trunking installation
- Continuation of AV and IT fit-off
- Commencement of signage installation
- Continuation of cleaning



New entry, carpark and loading dock

Progress Photographs (Week ending 16/09/2023)



Epoxy floor finishes



Central Atrium large format screen



Room numbering

Progress Photographs (Week ending 16/09/2023)



Yarning circle



Lower ground floor reception and student services

Site Photograph (Week ending 16/09/2023)



TAFE NSW ICT Technology demonstration

Institute of
Applied Technology
Construction



Turfing underway

Site Photograph



Next Steps (18/09 - 23/09/2023)

- Completion of civil high-risk area
- Continuation of civil ground works and external landscaped areas, stairs, driveway, carpark and pathways
- Continuation of services fit-off
- Continuation of joinery, painting, and floor finishes
- Continuation of Café fitout
- Continuation of AV and IT fit-off
- Continuation of signage installation
- Commencement of furniture and trades specific equipment deliveries and installation
- Continuation of cleaning



Carpentry machine workshop ready for machines

Traffic Movements (Week commencing 18/09/2023)

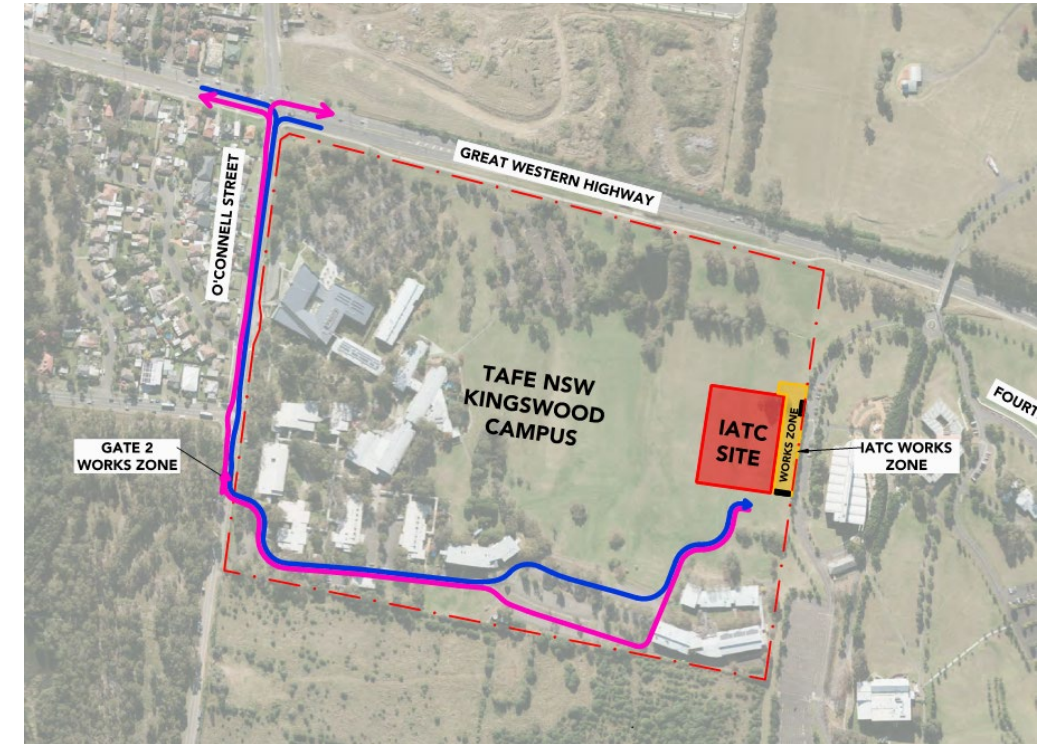
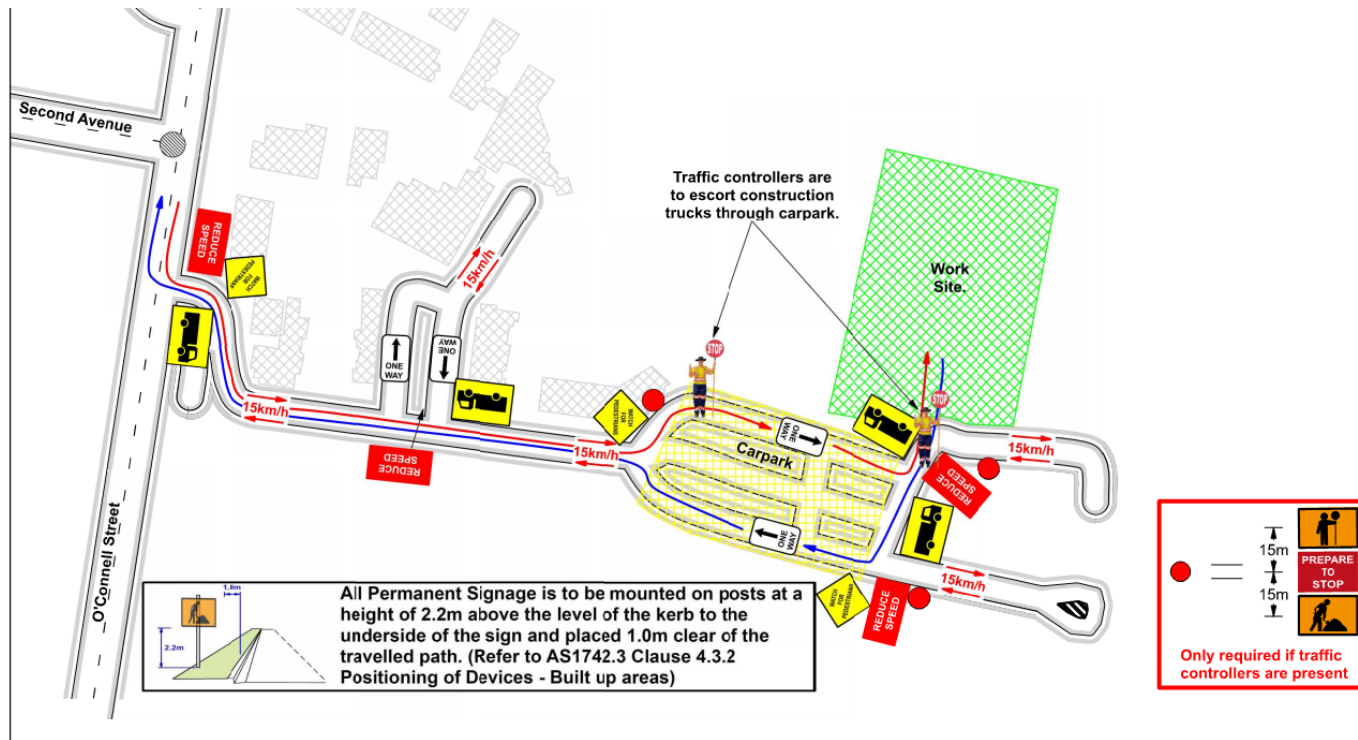
Traffic movement through Western Sydney University Werrington South Campus

	Monday 18/09/2023	Tuesday 19/09/2023	Wednesday 20/09/2023	Thursday 21/09/2023	Friday 22/09/2023	Saturday 23/09/2023
Description of Work Activities	Continuation of high-risk area, civil ground works and external landscaped areas, stairs and pathways, essential services and final fit-off, painting, floor finishes, and joinery installation throughout, delivery of trade specific equipment and furniture	Continuation of high-risk area, civil ground works and external landscaped areas, stairs and pathways, essential services and final fit-off, painting, floor finishes, and joinery installation throughout, delivery of trade specific equipment and furniture	Continuation of high-risk area, civil ground works and external landscaped areas, stairs and pathways, essential services and final fit-off, painting, floor finishes, and joinery installation throughout, delivery of trade specific equipment and furniture	Continuation of high-risk area, civil ground works and external landscaped areas, stairs and pathways, essential services and final fit-off, painting, floor finishes, and joinery installation throughout, delivery of trade specific equipment and furniture	Continuation of high-risk area, civil ground works and external landscaped areas, stairs and pathways, essential services and final fit-off, painting, floor finishes, and joinery installation throughout, delivery of trade specific equipment and furniture	Continuation of high-risk area, civil ground works and external landscaped areas, stairs and pathways, essential services and final fit-off, painting, floor finishes, and joinery installation throughout, delivery of trade specific equipment and furniture
Standing Traffic Control	Not required	Not required	Not required	Not required	Not required	Not required
07.00am	Deliveries and removal of material expected throughout the day	Deliveries and removal of material expected throughout the day	Deliveries and removal of material expected throughout the day	Deliveries and removal of material expected throughout the day	Deliveries and removal of material expected throughout the day	Deliveries and removal of material expected throughout the day
08.00am						
09.00am						
10.00am						
11.00am						
12.00pm						
01.00pm						
02.00pm						
03.00pm						
04.00pm						
05.00pm						
06.00pm						

TAFE NSW Nepean – Kingswood Campus Traffic Plan



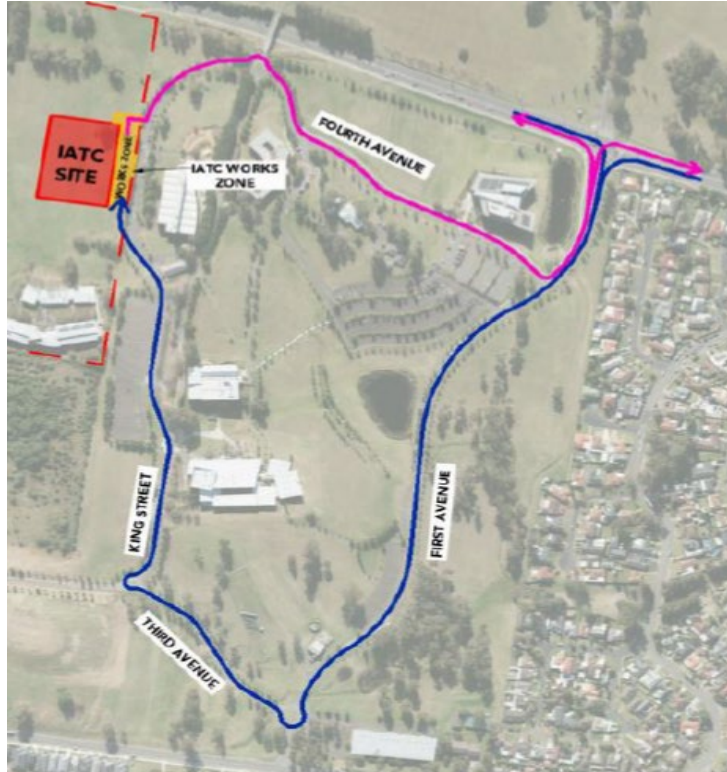
TAFE NSW Nepean - Kingswood Campus Specific Risk Assessment and Traffic Control Plan



Truck Access Route and Site Plan

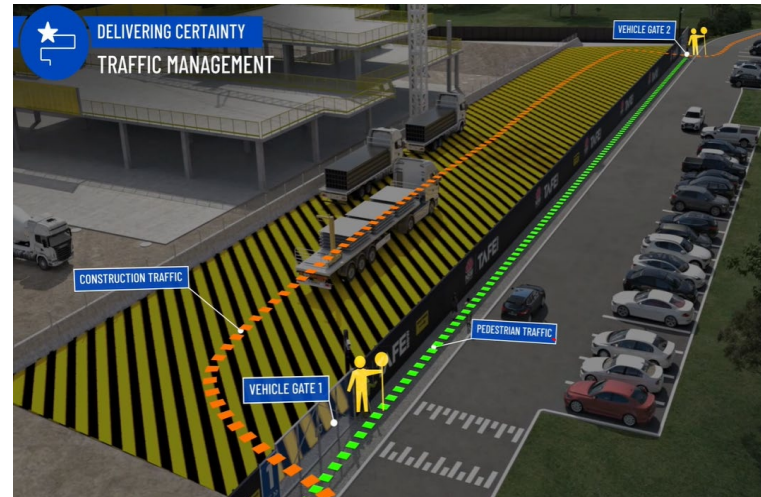
TAFE NSW Nepean – Kingswood Campus Traffic Plan

Western Sydney University Werrington South



Blue = Construction traffic entry
Pink = Construction traffic exit

Traffic control will be in place (as required)
between:
7am and 6pm Monday-Friday
8am and 4pm Saturdays



IATC Construction site entry and exit



All construction vehicles will enter and exit the WSU Werrington South Campus in a controlled manner.

All construction vehicle parking will be maintained within the site compound with entry and exit through TAFE NSW Nepean Kingswood Campus.

No WSU parking will be affected due to the construction.

Key Contacts

- **For key project updates and information about the Institute of Applied Technology - Construction**

- tafensw.edu.au/instituteofappliedtechnology
- Phone: 1800 752 142
- Email: iat@tafensw.edu.au

For all project related questions, concerns or complaints please contact:

Cameron Lang
TAFE NSW Investment Project Director
Email: cameron.lang2@tafensw.edu.au
Phone: 0408 406 919

For all day to day construction related question please contact:

Pierce Brennan,
ADCO Construction Senior Project Manager
Phone: 0419 422 566

Dion Richards
TAFE NSW Senior Project Manager (Ernst & Young)
Phone: 0423 765 833