

# IAT-C Weekly Construction Status Update

Institute of Applied Technology -  
Construction (IAT-C) & Multi-Trades

27 October 2023





# Context

TAFE NSW is delivering the Institute of Applied Technology - Construction; an \$84.5M Capital investment located at the TAFE NSW Nepean - Kingswood campus.

This new State of the Art, 5 Star Green Star Multi-trades facility will provide specialised training in construction, carpentry, electrical and plumbing, to support trades skills shortages in the Western Sydney Region.

The Institute of Applied Technology is a new education offering from the NSW Government, where leading educational institutions and industry will co-locate, co-design, and co-deliver theoretical and practical learning to empower people with the skills and experience they need to thrive in life and work. It will provide employable outcomes, transferrable skills, blended learning, and flexible pathways. This will ensure that NSW has a workforce ready to meet the needs of industry and future infrastructure demand.





# Highlights and Achievements (Week ending 28/10/2023)

- Continuation of external landscaped areas
- Continuation of painting and floor finishes
- Continuation of furniture installation
- Continuation of signage installation
- Continuation of cleaning
- Continuation of commissioning
- Continuation of services witness testing
- Preparation for Occupation Certificate
- Demobilisation of site sheds
- Removal of perimeter site fencing for landscape integration





# Progress Photographs (Week ending 27/10/2023)





# Progress Photographs (Week ending 27/10/2023)





# Site Photograph (Week ending 27/10/2023)





# Next Steps 30/10 - 4/11/2023)

- Continuation of external landscaped areas
- Completion of painting and floor finishes
- Completion of furniture installation
- Completion of signage installation
- Continuation of cleaning
- Continuation of commissioning
- Continuation of services witness testing
- Preparation for Occupation Certificate
- 24hr site security



# Traffic Movements (Week commencing 30/10/2023)

Traffic movement through Western Sydney University Werrington South Campus

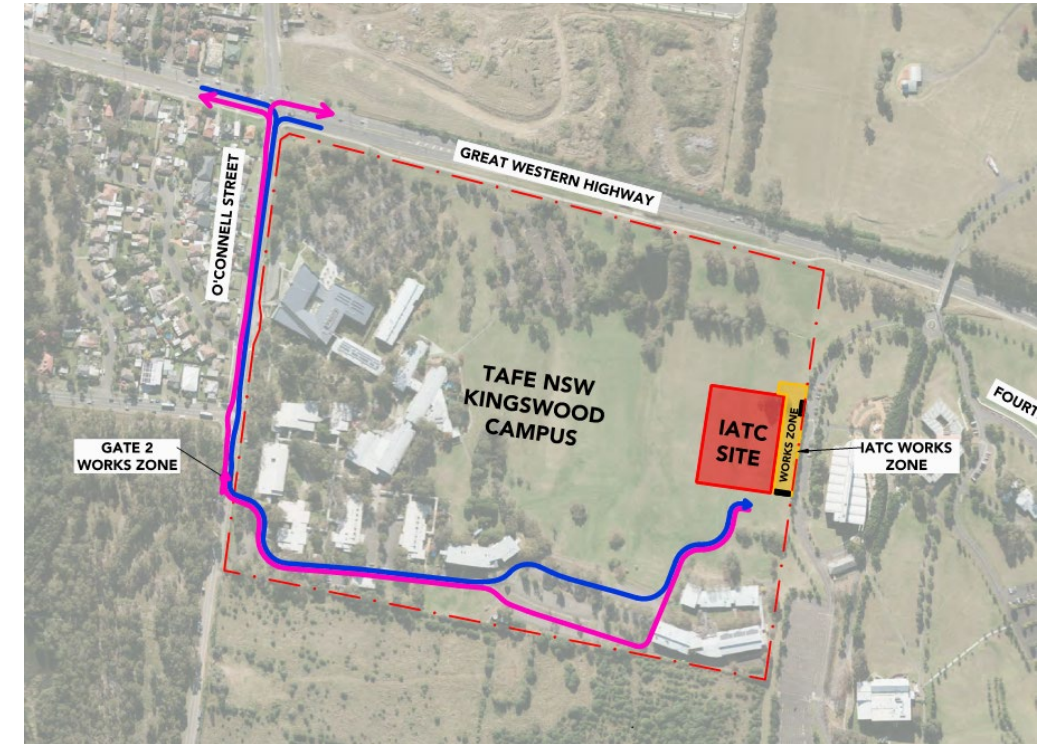
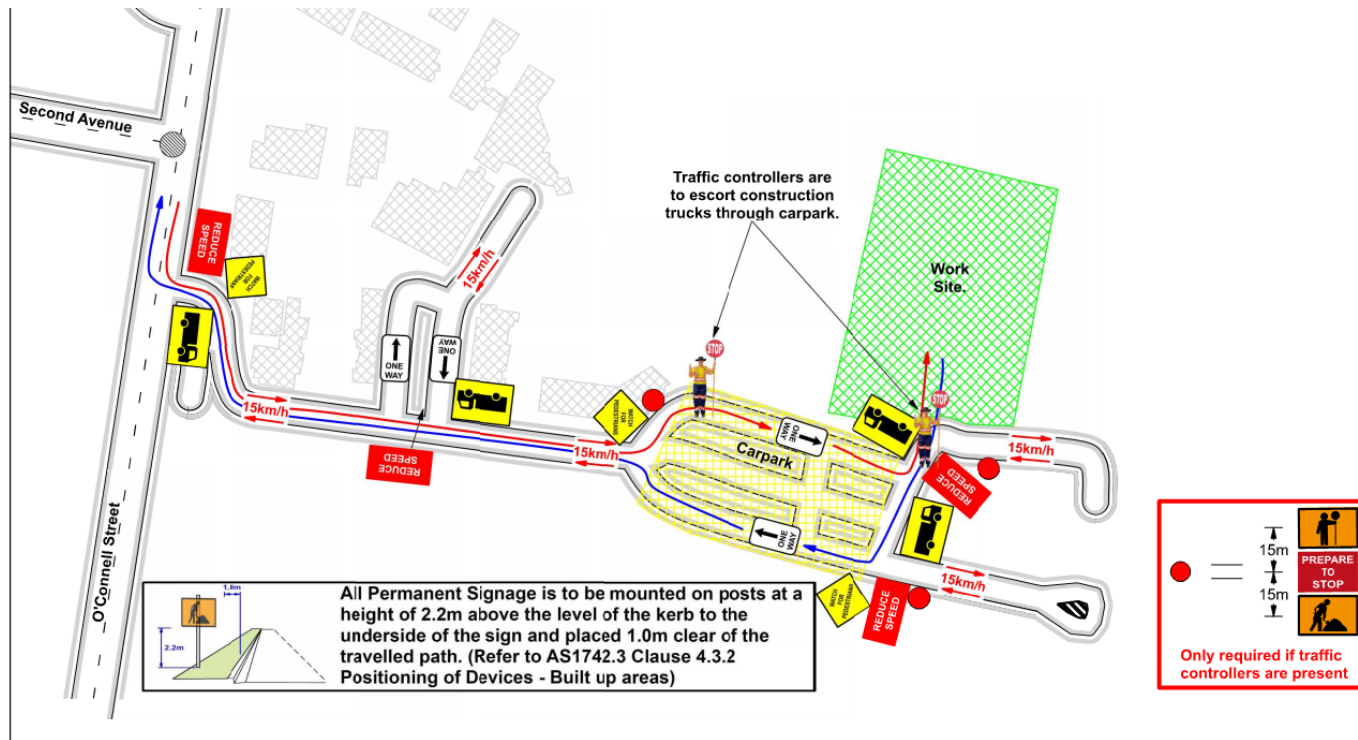
	Monday 30/10/2023	Tuesday 31/10/2023	Wednesday 1/11/2023	Thursday 2/11/2023	Friday 3/11/2023	Saturday 4/11/2023
Description of Work Activities	External landscaping works, demobilisation of site shed	External landscaping works, demobilisation of site shed	External landscaping works, demobilisation of site shed	External landscaping works	External landscaping works	External landscaping works
Standing Traffic Control	Not required	Not required	Not required	Not required	Not required	Not required
07.00am	Deliveries and removal of material expected throughout the day	Deliveries and removal of material expected throughout the day	Deliveries and removal of material expected throughout the day	Deliveries and removal of material expected throughout the day	Deliveries and removal of material expected throughout the day	Deliveries and removal of material expected throughout the day
08.00am						
09.00am						
10.00am						
11.00am						
12.00pm						
01.00pm						
02.00pm						
03.00pm						
04.00pm						
05.00pm						
06.00pm						



# TAFE NSW Nepean – Kingswood Campus Traffic Plan



# TAFE NSW Nepean - Kingswood Campus Specific Risk Assessment and Traffic Control Plan

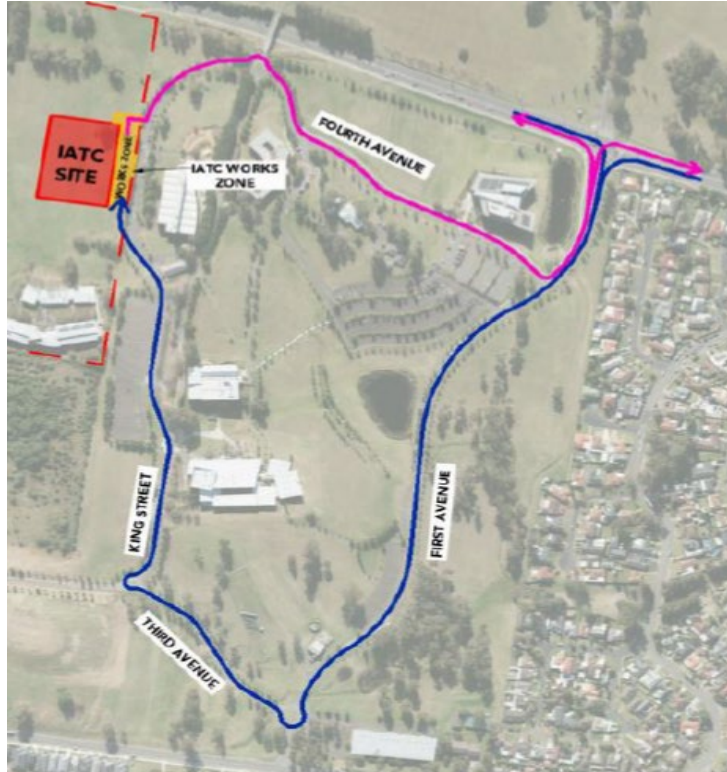


## Truck Access Route and Site Plan



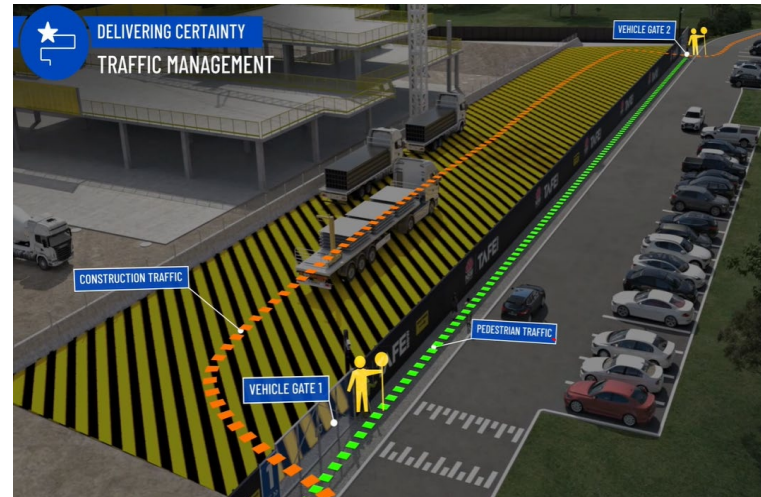
# TAFE NSW Nepean – Kingswood Campus Traffic Plan

Western Sydney University Werrington South



Blue = Construction traffic entry  
Pink = Construction traffic exit

Traffic control will be in place (as required)  
between:  
7am and 6pm Monday-Friday  
8am and 4pm Saturdays



IATC Construction site entry and exit



All construction vehicles will enter and exit the WSU Werrington South Campus in a controlled manner.

All construction vehicle parking will be maintained within the site compound with entry and exit through TAFE NSW Nepean Kingswood Campus.

No WSU parking will be affected due to the construction.



# Key Contacts

- **For key project updates and information about the Institute of Applied Technology - Construction**

- [tafensw.edu.au/instituteofappliedtechnology](https://tafensw.edu.au/instituteofappliedtechnology)
- Phone: 1800 752 142
- Email: [iat@tafensw.edu.au](mailto:iat@tafensw.edu.au)

**For all project related questions, concerns or complaints please contact:**

Cameron Lang  
TAFE NSW Investment Project Director  
Email: [cameron.lang2@tafensw.edu.au](mailto:cameron.lang2@tafensw.edu.au)  
Phone: 0408 406 919

**For all day to day construction related question please contact:**

Pierce Brennan,  
ADCO Construction Senior Project Manager  
Phone: 0419 422 566

Dion Richards  
TAFE NSW Senior Project Manager (Ernst & Young)  
Phone: 0423 765 833