

TAFENSW

IATC WEEKLY CONSTRUCTION STATUS UPDATE

INSTITUTE OF APPLIED TECHNOLOGY
CONSTRUCTION (IATC)

24 December 2021

OUR IATC ROADMAP



IATC Open
For
Business



Q3 2021

Q4 2021

Q1 2022

Q2 2022

Q3 2022

Q4 2022

Q1 2023

**Contractor RTA
and
First Partner
Workshop**

1

2

**Collaboration Agreements
and Construction**

- Collaboration Agreements signed by Uni & principal industry partner
- Building construction commences

Education Model

Education Model agreed by all partners

3

4

Operating Model

- Operating Model developed
- Product development
- Workforce planning
- Op Readiness plan refined

Marketing Campaign

IATC Marketing Campaign begins ahead of enrolment period

5

6

Construction Complete

Construction complete and ready for handover to business

7

Operational Readiness

Preparation for IAT opening

We are here

HIGHLIGHTS AND ACHIEVEMENTS (WE 24/12/21)

- ✓ Project website updated
- ✓ Bulk excavation continues
- ✓ Stockpiling of top soil on site
- ✓ Installation of noise and vibration control monitors completed
- ✓ Connection of temporary power and water to the site
- ✓ Construction site access preparation via Western Sydney University continues
- ✓ Architectural design finalisation continues
- ✓ User group workshops continue



NEXT STEPS (10/01/22-14/01/22)

JANUARY

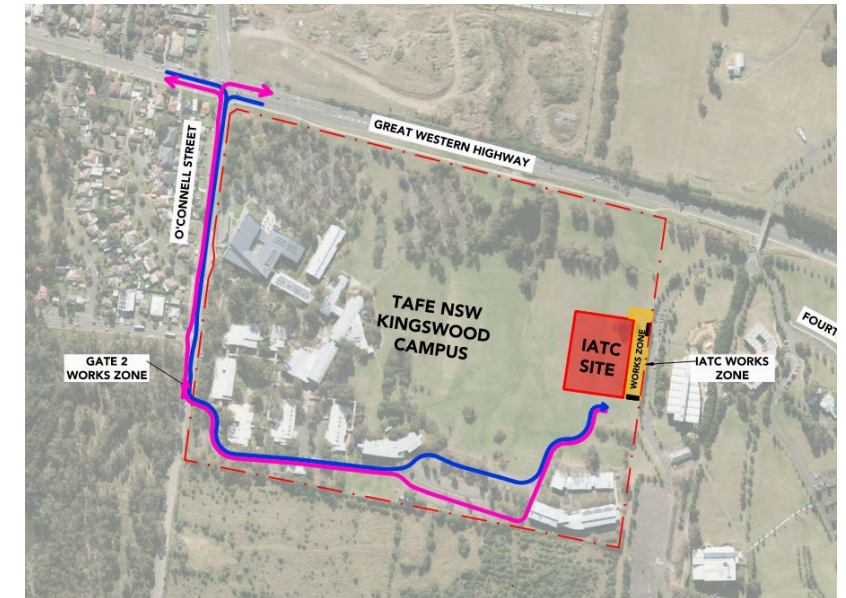
- Bulk excavation and movement of soil to continue
- Inground services installation to commence
- Preparation and installation of site parking to continue
Anticipated completion date 18/01/22
- Establish construction traffic control measures within Western Sydney University
- Architectural design finalisation to continue
- User group workshops to continue
- Crown Development Verification Certificate 02 preparation to continue

PARKING AND TRAFFIC MOVEMENTS (WC.....)

Traffic movement through TAFE NSW Nepean - Kingswood Campus and Western Sydney University

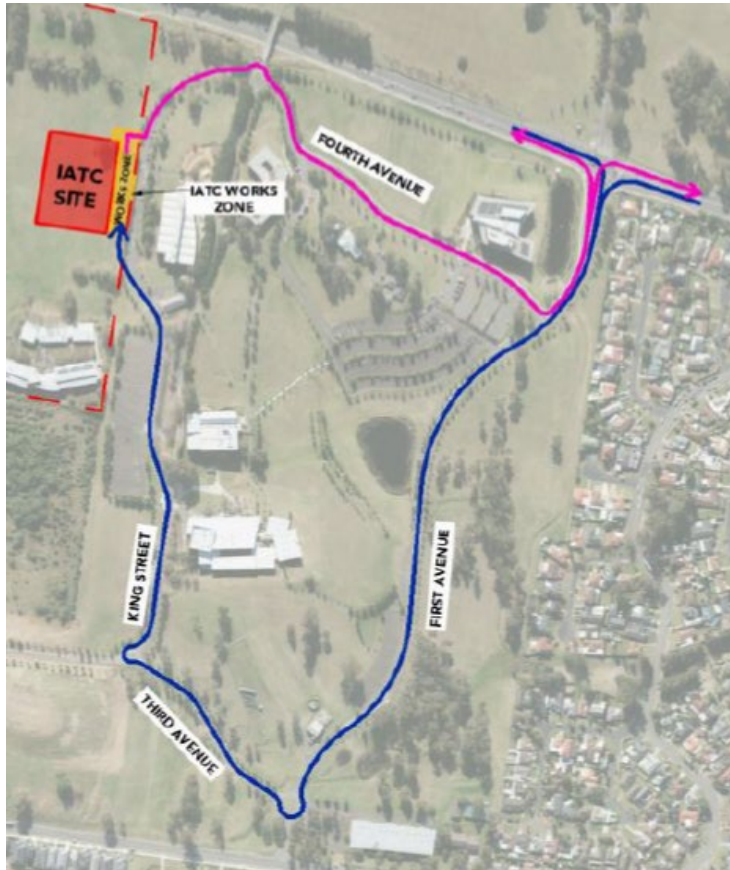
**Christmas shutdown period from
24/12/2021 with works
recommencing from 10/01/2022**

TAFE NSW Nepean - Kingswood Campus Specific Risk Assessment and Traffic Control Plan



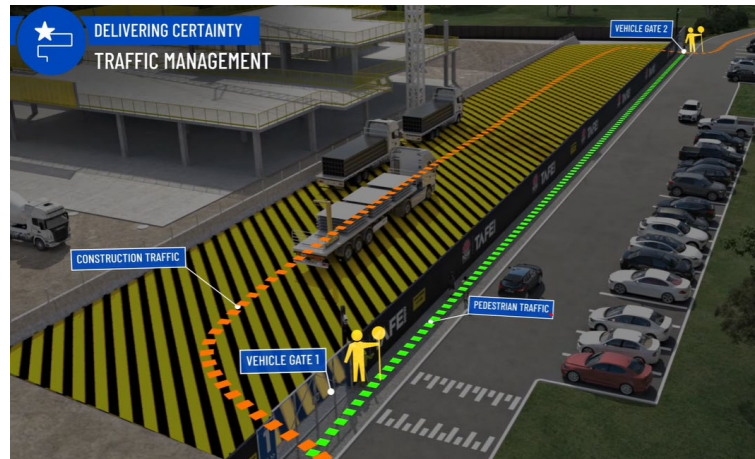
CONSTRUCTION TRAFFIC ROUTE AND SITE ACCESS

WESTERN SYDNEY UNIVERSITY WERRINGTON SOUTH from 13/12/21



Blue = Construction traffic entry
Pink = Construction traffic exit

Traffic control will be in place (as required) between:
7am and 6pm Monday-Friday
8am and 1pm Saturdays



IATC Construction site entry and exit



All construction vehicles will enter and exit the WSU Werrington South Campus in a controlled manner.

All construction vehicle parking will be maintained within the site compound with entry and exit through TAFE NSW Nepean Kingswood Campus.

No WSU parking will be affected due to the construction.

KEY CONTACTS

For key project updates and information about the Institute of Applied Technology please visit the project website

- [IATC project website](#)
- Phone: [1800 752 142](tel:1800752142)
- Email: iat@tafensw.edu.au

For all project related questions, concerns or complaints please contact:

Cameron Lang, TAFE NSW Investment Project Director at cameron.lang2@tafensw.edu.au or 0408 406 919.

For all day to day construction related question please contact:

Pierce Brennan, ADCO Construction Senior Project Manager on 0419 422 566

Donald Geale, ADCO Construction Site Manager on 0418 365 052

Mitch Alexander, TAFE NSW Senior Project Manager (Cadence Australia) on 0428 440 555

**Wishing you and your families a very Merry Christmas
and a safe and happy New Year.**

**Thank you for your support and we look forward to
continuing this journey with you in 2022**