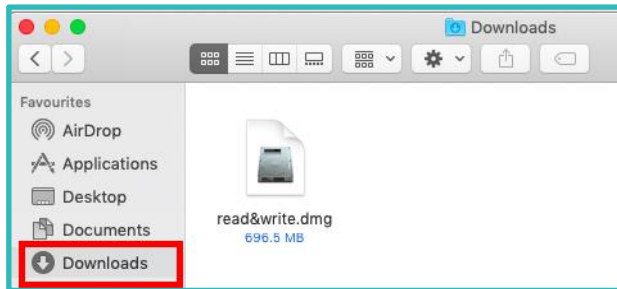


TAFE NSW Students and Staff

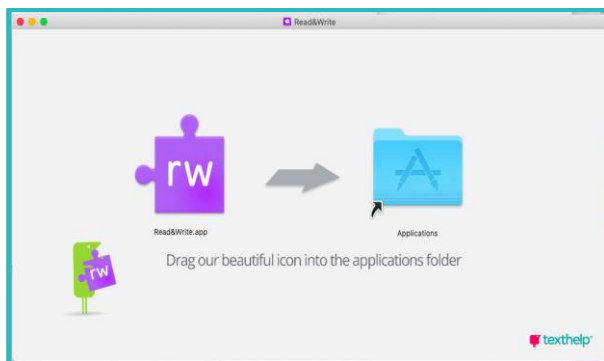
Installing Read&Write for Mac

Let's Get Started

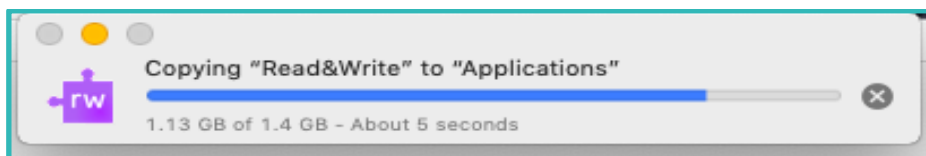
1. Click below to view the preferred system requirements:
<https://support.texthelp.com/help/readwrite-for-mac-system-requirements>
2. Click the link below to access the Read&Write installation file:
<http://fastdownloads2.texthelp.com/readwritemac7/installers/read&write.dmg>
3. Locate the read&write.dmg file you just downloaded (by default, it should be in your 'Downloads' folder), then double click the file to run the Read&Write installer



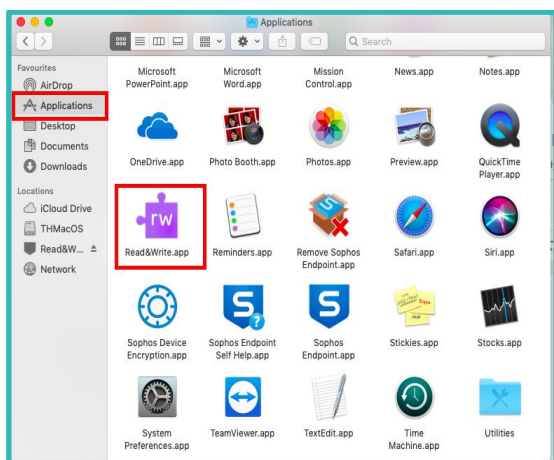
4. Click & drag the Read&Write purple puzzle icon into the Applications folder as instructed.



5. Read&Write installer should now begin installing the program into the Applications folder.



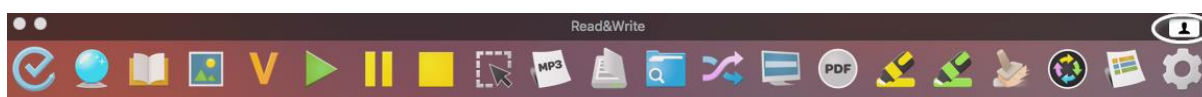
6. Once installation is complete, check your Applications folder for the Read&Write icon. Double click the icon to open the app



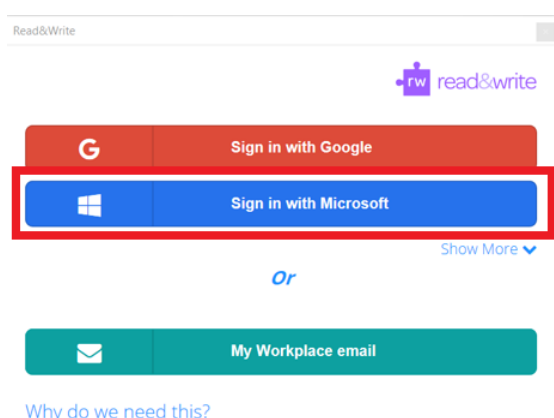
Signing in

When running Read&Write for the first time, you will be required to sign in to access Premium features. To sign in to Read&Write: -

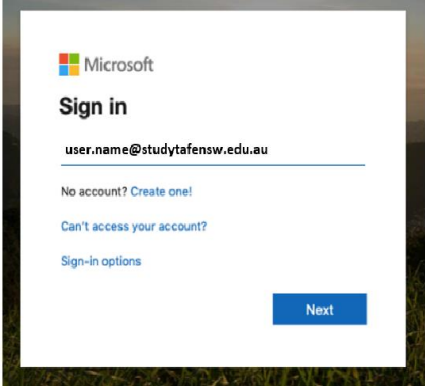
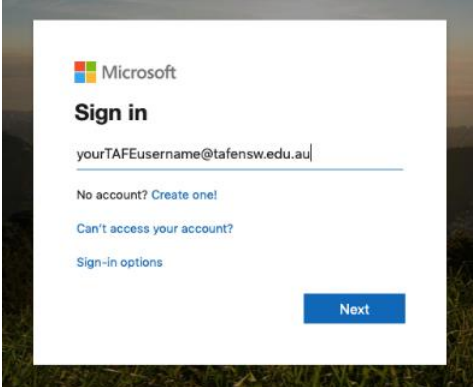
1. Click the icon on the top of your Read&Write toolbar



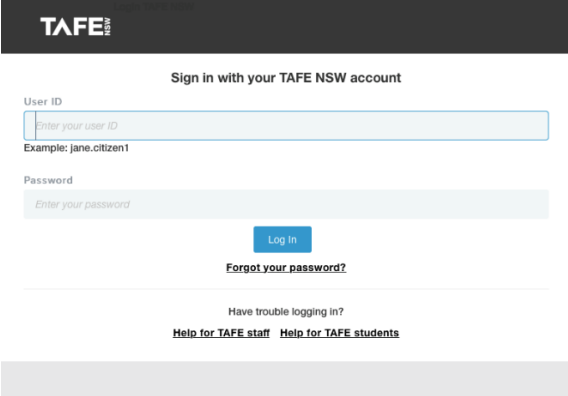
2. Select the sign in with Microsoft option



3. Sign in with your TAFENSW email account then click Next

<p>Student example: user.name@studytafensw.edu.au</p>	<p>Staff example: user.name@tafensw.edu.au</p>
	

4. You will be redirected to the TAFENSW Sign In page. Enter your TAFENSW username (eg user.name) and password to Log in.



Congratulations! You have now successfully installed Read&Write on your Mac computer.

Visit your nearest TAFENSW library for help in following the instructions.

If you have any questions, concerns or issues, please do not hesitate to contact TextHelp IT Support email: support@texthelp.com

For information about using the features of Read&Write software you can find user guides and quick reference guides at the TextHelp Website

<https://www.texthelp.com/en-au/support/training/getting-started/>

[End of Guide]