

CONNECTED LEARNING CENTRES CREATING BRIGHTER FUTURES

Connected Learning Centres will provide more choice, better access and convenient training, supported by digital technologies, to students and employers across regional NSW.

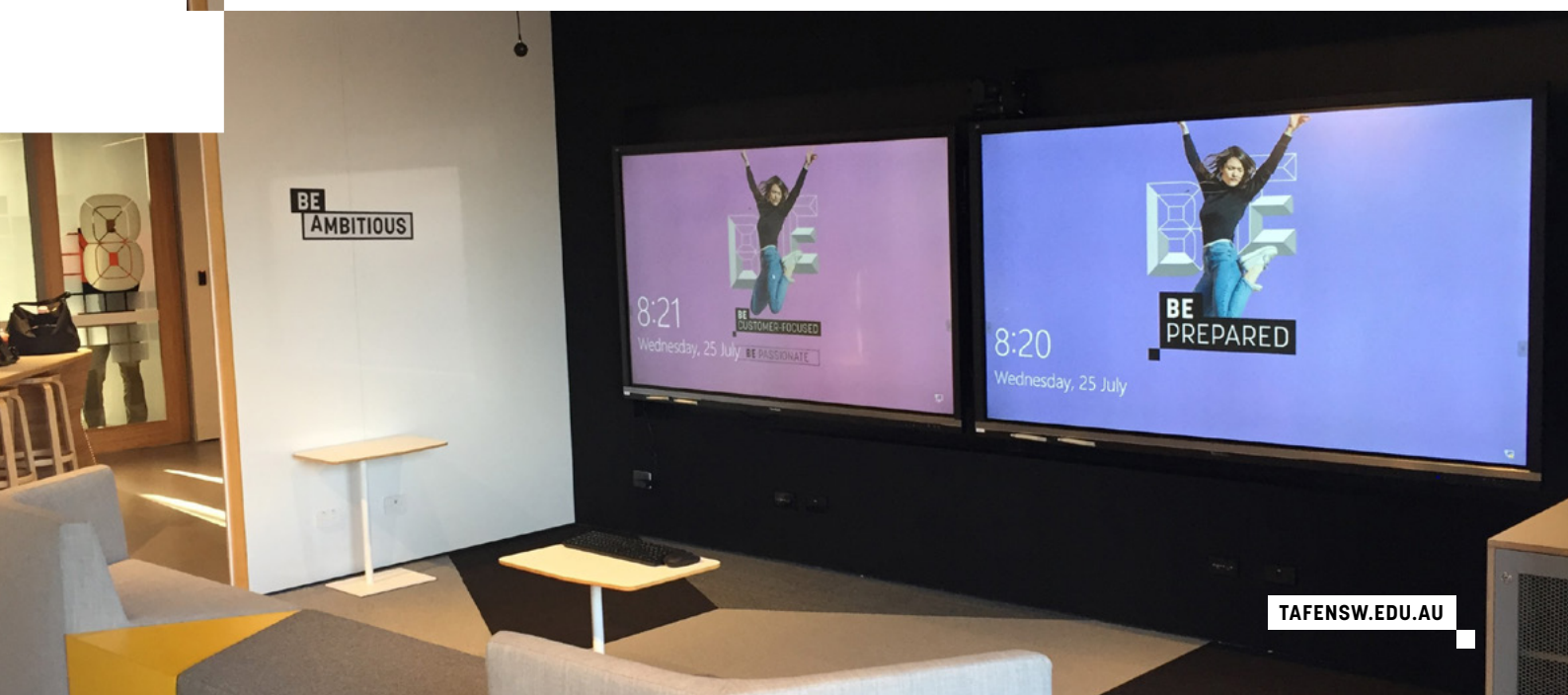
Opening in the heart of Murwillumbah, Connected Learning Centres represent TAFE NSW's ongoing commitment to regional communities to provide greater convenience and accessibility to services when, where and how students and employers want training.

The Connected Learning Centre will provide new active, adaptive, flexible, multi-purpose and digitally enabled learning environments that enhance our capability to provide high quality training and learning experiences and support services for all.

The Connected Learning Centre will continue to provide practical learning and will be supported by mobile training units, simulation and virtual reality experiences.

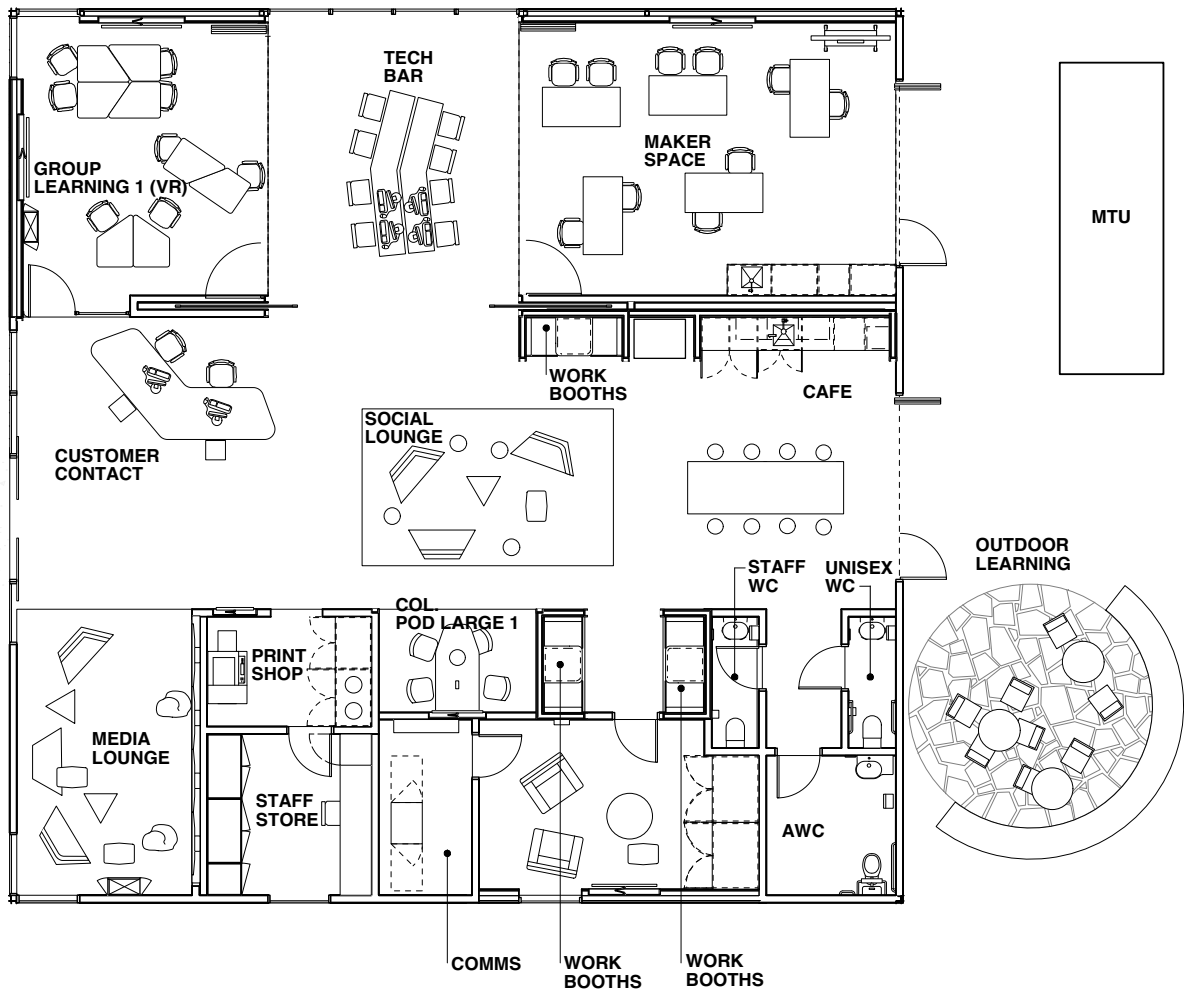
CONNECTED LEARNING CENTRE: MURWILLUMBAH

- The new, state-of-the-art Connected Learning Centre will be located in the heart of Murwillumbah at 115-117 Wollumbin Street, Murwillumbah.
- TAFE NSW will work closely with industry and the Murwillumbah community to develop industry specialist facilities and courses that support the Murwillumbah community.
- TAFE NSW is bringing hands-on training to Murwillumbah students and employers any time, anyhow.





Typical layout of a CLC



For questions or to make contact please email
CLC@tafensw.edu.au

