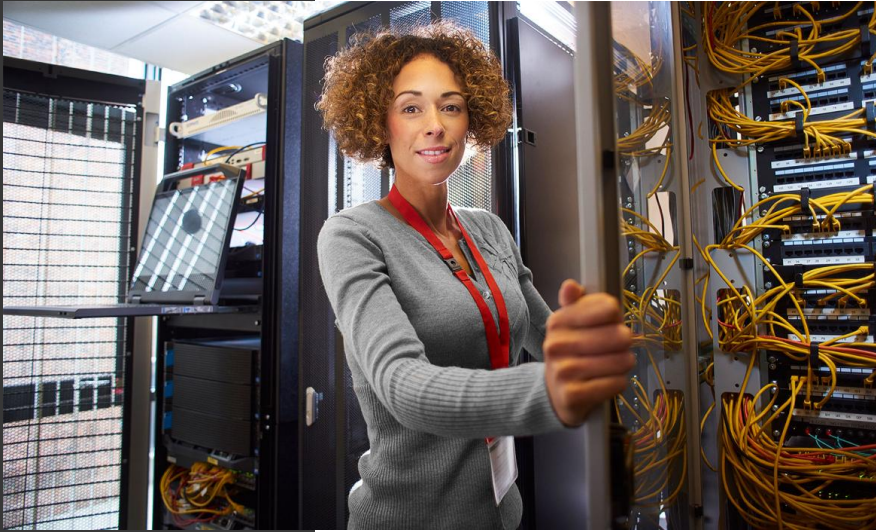


# CERTIFICATE IV IN INFORMATION TECHNOLOGY SUPPORT



COURSE CODE:

**ICT40215**

## WHY CHOOSE TAFE NSW?



**Opens career doors.** Our industry relationships lead many students directly into work with a range of employers including agencies, studios, galleries and fashion houses.



**Global prospects.** TAFE NSW graduates possess the technical knowledge, creative-thinking and specialised skills that are highly sought after by employers around the world.



**State-of-the-art facilities.** Purpose-built creative studios and industry standard software mean you will master the same tools of the trade as leading professionals.



**Industry exposure.** TAFE NSW partners with industry to provide you with hands-on experience through networking, sponsor programs, competitions, talks, lectures and other creative industry events.



**Recognised and respected.** TAFE NSW has built its reputation on delivering trusted, industry aligned and nationally recognised training for over 130 years.

**ENROL TODAY**  
**TAFENSW.EDU.AU**  
**131 601**

**BE AMBITIOUS**

**COURSE CODE**

ICT40215

**QUALIFICATION**

Certificate IV in Information Technology Support

**CAREER AREA**

Information Technology

**TRAINING PACKAGE ENTRY REQUIREMENTS:**

There are no Training Package entry requirements for this qualification.

It is assumed that you have literacy, numeracy and technical skills at Certificate III level for success in this course. Contact your TAFE NSW campus if you have any questions about your suitability.



NATIONALLY RECOGNISED  
TRAINING

- **Traineeship Allowed**
- **Full Time, Part Time Evening**

**OVERVIEW**

You are the go to person when someone has a computer issue. Some call you a computer whiz. Why not develop those skills and get paid for your expertise?

This is a fully government-subsidised JobTrainer course. Eligibility criteria applies.

The Certificate IV in Information Technology is the perfect course for you to reinforce your IT knowledge and get a nationally recognised qualification at the same time.

TAFE NSW teachers are experts in their field and they will ensure you are equipped with the knowledge you will need to:

- Support and manage small scale networks
- Support others to solve problems with word processing, spreadsheet and presentation applications
- Install software applications
- Detect spam and destructive software and protect devices
- Integrate commercial computing packages

To make it even easier to study at TAFE NSW, we have developed a range of study options for you to choose from that may include online, on campus, part-time or full-time, day or evening, so you can fit your study into your life.

CAMPUS	STUDY MODE	START DATE	DURATION	MAX FEE IF ELIGIBLE FOR SUBSIDY	HOURS PER WEEK
Inverell	Full Time	Anytime	36 Weeks	\$2,310.00	22.5
St George	Full Time	01 Feb 2021	18 Weeks	\$2,310.00	20.5
St George	PT Evening	01 Feb 2021	36 Weeks	\$2,310.00	9
Tamworth	Full Time	Anytime	36 Weeks	\$2,310.00	22.5

**ENROL TODAY TAFENSW.EDU.AU 131 601**

© TAFE NSW 2020. CORRECT AT TIME OF PUBLICATION - 09 MAY 2021. RTO 90003 | CRICOS 00591E | HEP PRV12049